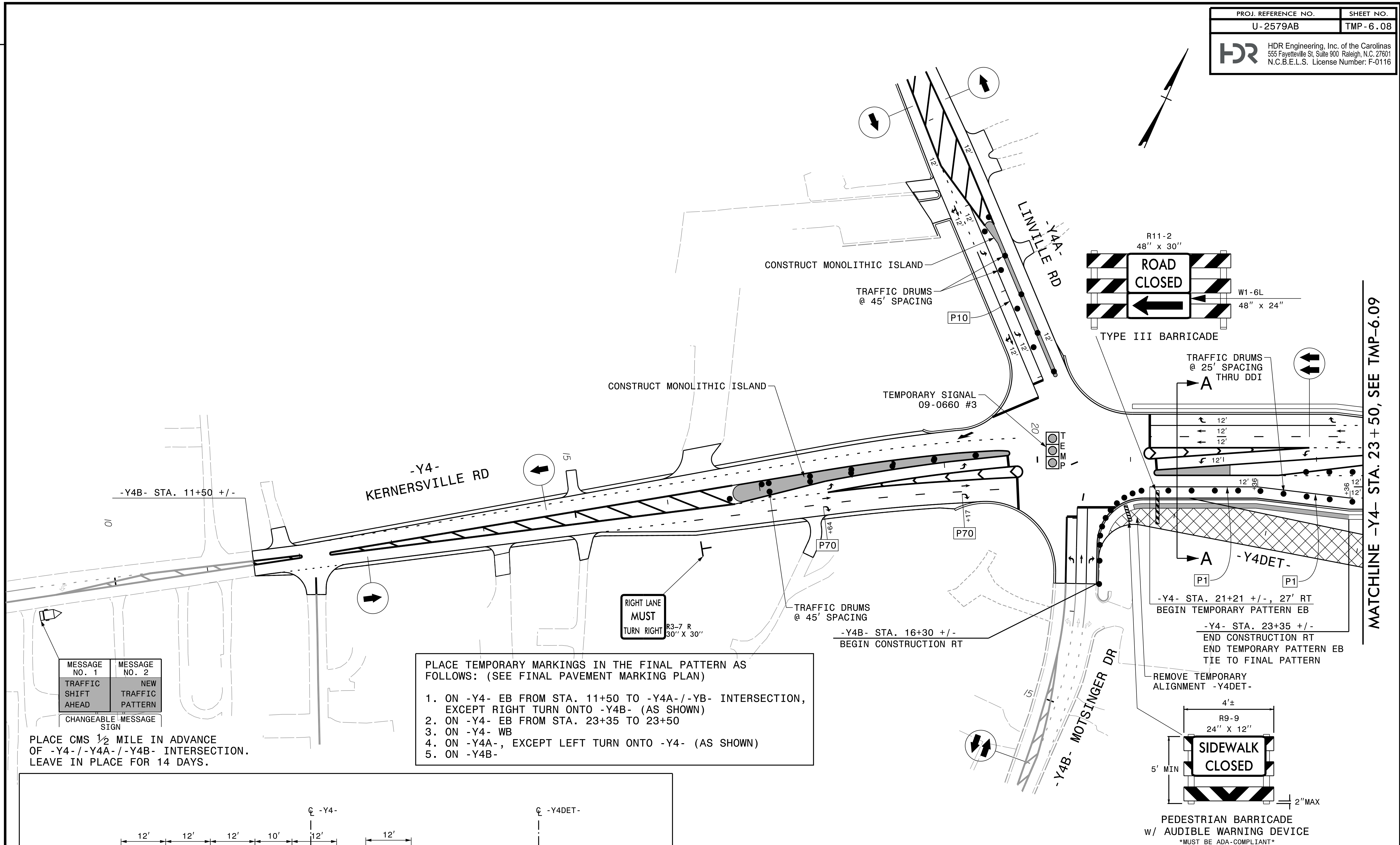


PLOT DRIVER: NCDOT_color_eng_50.plt
 USER: CHARNDEN
 FILE: p:\w\h\pdr\use\01\HDE\US-East\01\Documents\NCDOT\U2579AB\6.0_CAD_BTM\6.2_Work_In_Progress\U-2579AB\TrafficControl\TCP\U2579AB_TC_TMP-06.08_Area_3_Phase_3_Sheet_1

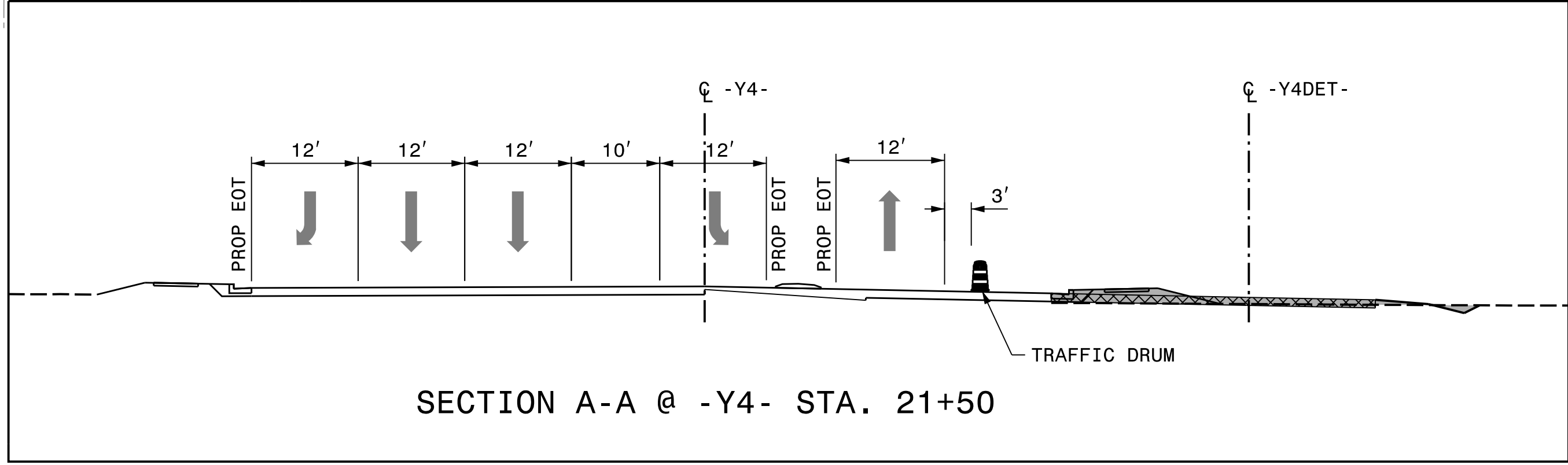


MESSAGE NO. 1	MESSAGE NO. 2
TRAFFIC SHIFT AHEAD	NEW TRAFFIC PATTERN

CHANGEABLE MESSAGE SIGN

PLACE CMS 1/2 MILE IN ADVANCE OF -Y4-/-Y4A-/-Y4B- INTERSECTION. LEAVE IN PLACE FOR 14 DAYS.

- PLACE TEMPORARY MARKINGS IN THE FINAL PATTERN AS FOLLOWS: (SEE FINAL PAVEMENT MARKING PLAN)
- ON -Y4- EB FROM STA. 11+50 TO -Y4A-/-YB- INTERSECTION, EXCEPT RIGHT TURN ONTO -Y4B- (AS SHOWN)
 - ON -Y4- EB FROM STA. 23+35 TO 23+50
 - ON -Y4- WB
 - ON -Y4A-, EXCEPT LEFT TURN ONTO -Y4- (AS SHOWN)
 - ON -Y4B-



MATCHLINE -Y4- STA. 23+50, SEE TMP-6.09

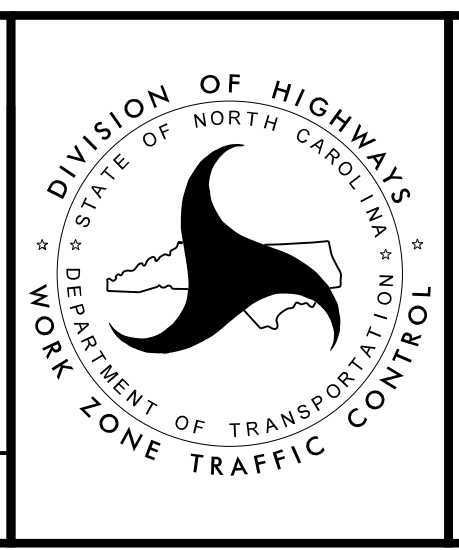
APPROVED: *Michelle Ward*

DATE: 10/13/2021

SEAL

NORTH CAROLINA PROFESSIONAL ENGINEER SEAL 033789 MICHELLE WARD

DOCUMENT NOT CONSIDERED FINAL UNLESS ALL SIGNATURES COMPLETED



AREA 3
 PHASE 3