


PROJECT REFERENCE NO.	SHEET NO.
U-2579AB	RW23
<b>Location and Surveys</b>	
PROJECT SURVEYOR	
	
DOCUMENT NOT CONSIDERED FINAL UNLESS ALL SIGNATURES COMPLETED	

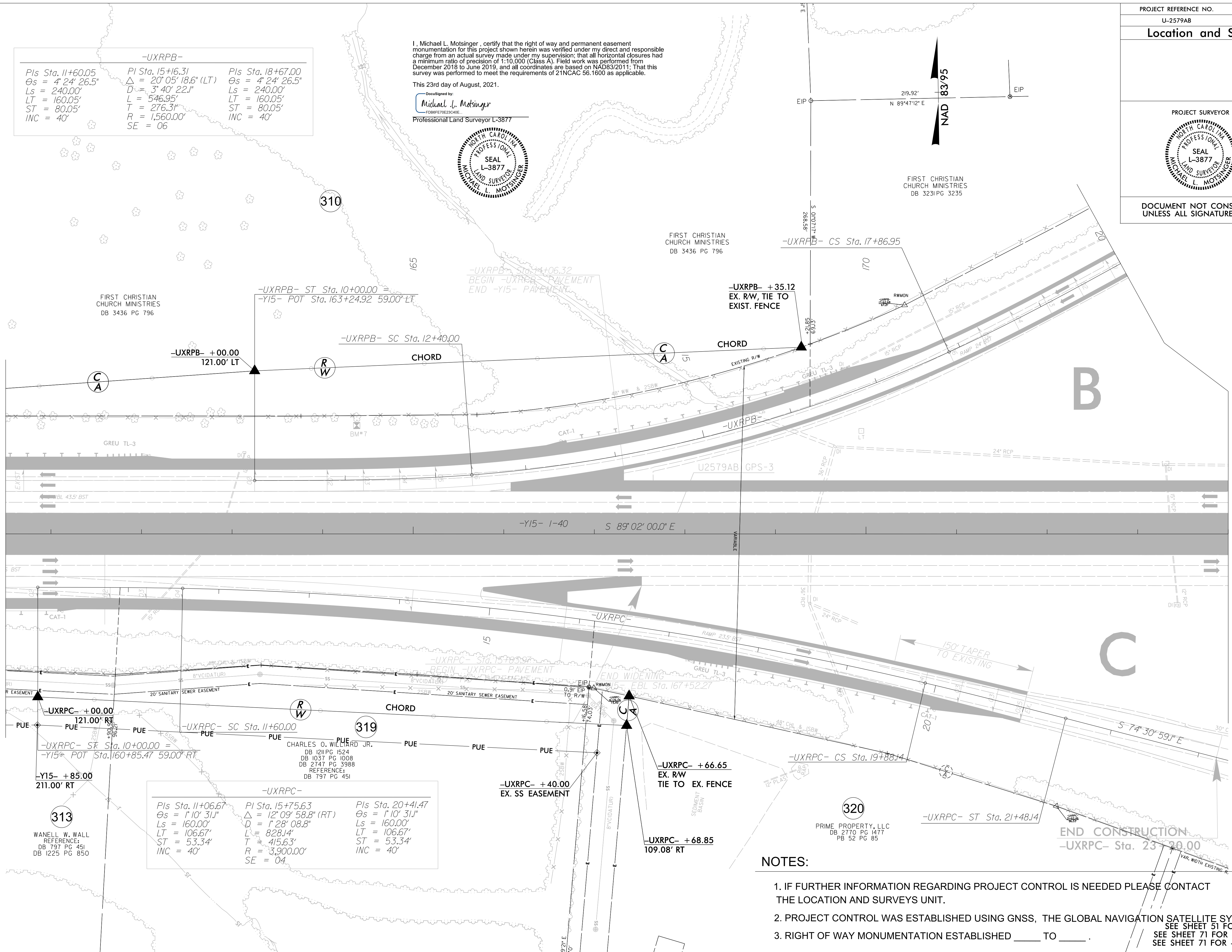
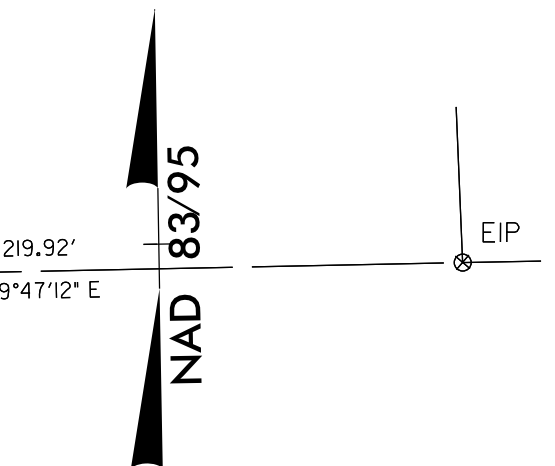
-UXRPB-

Pls Sta. 11+60.05 θs = 4° 24' 26.5" Ls = 240.00' LT = 160.05' ST = 80.05' INC = 40'	PI Sta. 15+16.31 Δ = 20° 05' 18.6" (LT) D = 3° 40' 22.1" L = 546.95' T = 276.3' R = 1,560.00' SE = 06	Pls Sta. 18+67.00 θs = 4° 24' 26.5" Ls = 240.00' LT = 160.05' ST = 80.05' INC = 40'
--	---	--

I, Michael L. Molsinger, certify that the right of way and permanent easement monumentation for this project shown herein was verified under my direct and responsible charge from an actual survey made under my supervision; that all horizontal closures had a minimum ratio of precision of 1:10,000 (Class A). Field work was performed from December 2018 to June 2019, and all coordinates are based on NAD83/2011; That this survey was performed to meet the requirements of 21NCAC 56.1600 as applicable.

This 23rd day of August, 2021.

DocuSigned by:  
**Michael L. Molsinger**  
Professional Land Surveyor L-3877



-UXRPC-

Pls Sta. 11+06.67 θs = 1° 10' 31.1" Ls = 160.00' LT = 106.67' ST = 53.34' INC = 40'	PI Sta. 15+75.63 Δ = 12° 09' 58.8" (RT) D = 1° 28' 08.8" L = 828.14' T = 415.63' R = 3,900.00' SE = 04	Pls Sta. 20+41.47 θs = 1° 10' 31.1" Ls = 160.00' LT = 106.67' ST = 53.34' INC = 40'
--	--	--

**NOTES:**

1. IF FURTHER INFORMATION REGARDING PROJECT CONTROL IS NEEDED PLEASE CONTACT THE LOCATION AND SURVEYS UNIT.
2. PROJECT CONTROL WAS ESTABLISHED USING GNSS, THE GLOBAL NAVIGATION SATELLITE SYSTEM. NOTES: SEE SHEET 51 FOR -Y15- PROFILE SEE SHEET 71 FOR -UXRPB- PROFILE SEE SHEET 71 FOR -UXRPC- PROFILE
3. RIGHT OF WAY MONUMENTATION ESTABLISHED \_\_\_\_ TO \_\_\_\_.

REVISIONS

I:\SEP-2021\0828  
 C:\Mike\Projects\U2579AB\U2579AB.Ls.rw23.dgn  
 molsinger