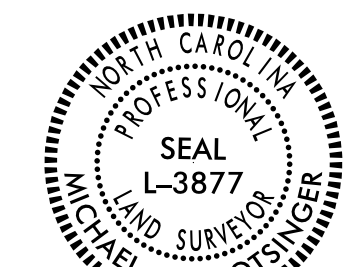


Location and Surveys

INSERT CONSULTANT'S NAME

PROJECT SURVEYOR



DOCUMENT NOT CONSIDERED FINAL UNLESS ALL SIGNATURES COMPLETED



<p>PI Sta. 14+02.22 $\Delta = 2'02.152$ $\theta = 3'49.135$ $L = 200.00$ $T = 10.22$ $ST = 69.99$ $INC = 30.00$ $SE = 0.00$ $R = 72$</p>	<p>PI Sta. 14+80.77 $\Delta = 2'02.152$ $\theta = 3'49.135$ $L = 200.00$ $T = 10.22$ $ST = 69.99$ $INC = 30.00$ $SE = 0.00$ $R = 72$</p>	<p>PI Sta. 18+35.16 $\Delta = 2'02.152$ $\theta = 3'49.135$ $L = 200.00$ $T = 10.22$ $ST = 69.99$ $INC = 30.00$ $SE = 0.00$ $R = 72$</p>	<p>PI Sta. 24+39.30 $\Delta = 2'02.152$ $\theta = 3'49.135$ $L = 200.00$ $T = 10.22$ $ST = 69.99$ $INC = 30.00$ $SE = 0.00$ $R = 72$</p>	<p>PI Sta. 24+34.62 $\Delta = 2'02.152$ $\theta = 3'49.135$ $L = 200.00$ $T = 10.22$ $ST = 69.99$ $INC = 30.00$ $SE = 0.00$ $R = 72$</p>
--	--	--	--	--

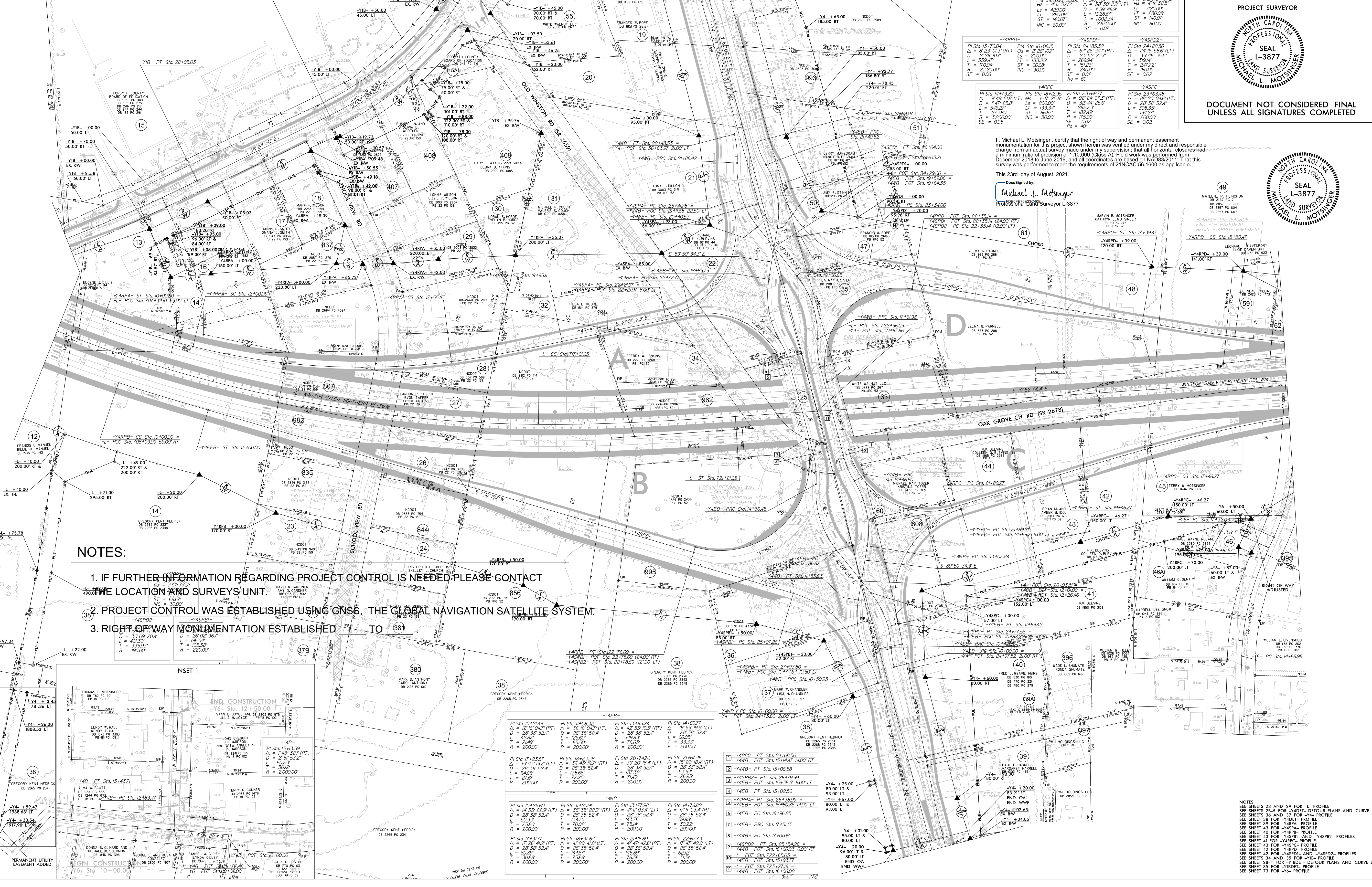
I, Michael L. Molsinger, certify that the right of way and permanent easement monumentation for this project shown herein was verified under my direct and responsible charge from an actual survey made under my supervision; that all horizontal closures had a minimum ratio of precision of 1:10,000 (Class A). Field work was performed from December 2018 to June 2019, and all coordinates are based on NAD83/2011; that this survey was performed to meet the requirements of 21NCAC 56.1600 as applicable.

This 23rd day of August, 2021.

Michael L. Molsinger
 Professional Land Surveyor L-3877

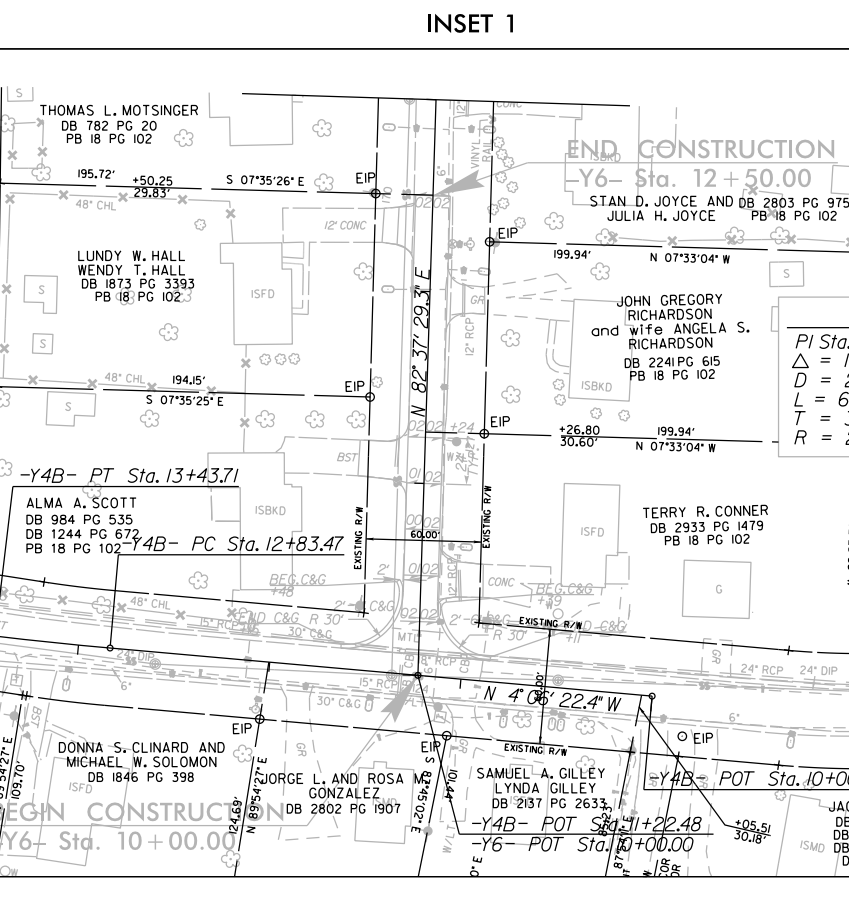
MARLENE P. FLOCHAM
 DB 2157 PC 600
 DB 2851 PC 600
 DB 2851 PC 600
 DB 2851 PC 600

<p>PI Sta. 14+02.22 $\Delta = 2'02.152$ $\theta = 3'49.135$ $L = 200.00$ $T = 10.22$ $ST = 69.99$ $INC = 30.00$ $SE = 0.00$ $R = 72$</p>	<p>PI Sta. 14+80.77 $\Delta = 2'02.152$ $\theta = 3'49.135$ $L = 200.00$ $T = 10.22$ $ST = 69.99$ $INC = 30.00$ $SE = 0.00$ $R = 72$</p>	<p>PI Sta. 18+35.16 $\Delta = 2'02.152$ $\theta = 3'49.135$ $L = 200.00$ $T = 10.22$ $ST = 69.99$ $INC = 30.00$ $SE = 0.00$ $R = 72$</p>	<p>PI Sta. 24+39.30 $\Delta = 2'02.152$ $\theta = 3'49.135$ $L = 200.00$ $T = 10.22$ $ST = 69.99$ $INC = 30.00$ $SE = 0.00$ $R = 72$</p>	<p>PI Sta. 24+34.62 $\Delta = 2'02.152$ $\theta = 3'49.135$ $L = 200.00$ $T = 10.22$ $ST = 69.99$ $INC = 30.00$ $SE = 0.00$ $R = 72$</p>
--	--	--	--	--



NOTES:

1. IF FURTHER INFORMATION REGARDING PROJECT CONTROL IS NEEDED PLEASE CONTACT THE LOCATION AND SURVEYS UNIT.
2. PROJECT CONTROL WAS ESTABLISHED USING GNSS, THE GLOBAL NAVIGATION SATELLITE SYSTEM.
3. RIGHT OF WAY MONUMENTATION ESTABLISHED TO 38'



<p>PI Sta. 10+25.80 $\Delta = 2'02.152$ $\theta = 3'49.135$ $L = 200.00$ $T = 10.22$ $ST = 69.99$ $INC = 30.00$ $SE = 0.00$ $R = 72$</p>	<p>PI Sta. 11+20.95 $\Delta = 2'02.152$ $\theta = 3'49.135$ $L = 200.00$ $T = 10.22$ $ST = 69.99$ $INC = 30.00$ $SE = 0.00$ $R = 72$</p>	<p>PI Sta. 13+68.24 $\Delta = 2'02.152$ $\theta = 3'49.135$ $L = 200.00$ $T = 10.22$ $ST = 69.99$ $INC = 30.00$ $SE = 0.00$ $R = 72$</p>	<p>PI Sta. 14+69.77 $\Delta = 2'02.152$ $\theta = 3'49.135$ $L = 200.00$ $T = 10.22$ $ST = 69.99$ $INC = 30.00$ $SE = 0.00$ $R = 72$</p>
--	--	--	--

- 1] -Y4RCP- PT Sta. 24+68.50
- 2] -Y4NB- POT Sta. 15+41.84 RT
- 3] -Y4SPB2- PT Sta. 15+06.58
- 4] -Y4EB- PT Sta. 15+02.50
- 5] -Y4RPA- PT Sta. 25+38.99
- 6] -Y4EB- POT Sta. 16+86.25
- 7] -Y4EB- PRC Sta. 15+15.13
- 8] -Y4NB- PC Sta. 17+01.08
- 9] -Y4SPB2- PT Sta. 25+54.28
- 10] -Y4NB- POT Sta. 16+66.93
- 11] -Y4EB- POT Sta. 15+13.71
- 12] -Y4NB- POT Sta. 16+06.02

REVISIONS

C:\SEP-2021\136_12579AB\U-2579AB-1.s...rw06.dgn
 mmolsinger

NOTES:
 SEE SHEETS 28 AND 29 FOR -L- PROFILE
 SEE SHEETS 28 AND 29 FOR -Y4EB- DETOUR PLANS AND CURVE DATA
 SEE SHEETS 36 AND 37 FOR -Y4- PROFILE
 SEE SHEET 38 FOR -Y4RPA- PROFILE
 SEE SHEET 39 FOR -Y4RPA- PROFILE
 SEE SHEET 40 FOR -Y4RPA- PROFILE
 SEE SHEET 41 FOR -Y4RPA- PROFILE
 SEE SHEET 42 FOR -Y4RPA- PROFILE
 SEE SHEET 43 FOR -Y4RPA- PROFILE
 SEE SHEET 44 FOR -Y4RPA- PROFILE
 SEE SHEET 45 FOR -Y4RPA- PROFILE
 SEE SHEET 46 FOR -Y4RPA- PROFILE
 SEE SHEET 47 FOR -Y4RPA- PROFILE
 SEE SHEET 48 FOR -Y4RPA- PROFILE
 SEE SHEET 49 FOR -Y4RPA- PROFILE
 SEE SHEET 50 FOR -Y4RPA- PROFILE
 SEE SHEET 51 FOR -Y4RPA- PROFILE
 SEE SHEET 52 FOR -Y4RPA- PROFILE
 SEE SHEET 53 FOR -Y4RPA- PROFILE
 SEE SHEET 54 FOR -Y4RPA- PROFILE
 SEE SHEET 55 FOR -Y4RPA- PROFILE
 SEE SHEET 56 FOR -Y4RPA- PROFILE
 SEE SHEET 57 FOR -Y4RPA- PROFILE
 SEE SHEET 58 FOR -Y4RPA- PROFILE
 SEE SHEET 59 FOR -Y4RPA- PROFILE
 SEE SHEET 60 FOR -Y4RPA- PROFILE
 SEE SHEET 61 FOR -Y4RPA- PROFILE
 SEE SHEET 62 FOR -Y4RPA- PROFILE
 SEE SHEET 63 FOR -Y4RPA- PROFILE
 SEE SHEET 64 FOR -Y4RPA- PROFILE
 SEE SHEET 65 FOR -Y4RPA- PROFILE
 SEE SHEET 66 FOR -Y4RPA- PROFILE
 SEE SHEET 67 FOR -Y4RPA- PROFILE
 SEE SHEET 68 FOR -Y4RPA- PROFILE
 SEE SHEET 69 FOR -Y4RPA- PROFILE
 SEE SHEET 70 FOR -Y4RPA- PROFILE
 SEE SHEET 71 FOR -Y4RPA- PROFILE
 SEE SHEET 72 FOR -Y4RPA- PROFILE
 SEE SHEET 73 FOR -Y4RPA- PROFILE
 SEE SHEET 74 FOR -Y4RPA- PROFILE
 SEE SHEET 75 FOR -Y4RPA- PROFILE
 SEE SHEET 76 FOR -Y4RPA- PROFILE
 SEE SHEET 77 FOR -Y4RPA- PROFILE
 SEE SHEET 78 FOR -Y4RPA- PROFILE
 SEE SHEET 79 FOR -Y4RPA- PROFILE
 SEE SHEET 80 FOR -Y4RPA- PROFILE
 SEE SHEET 81 FOR -Y4RPA- PROFILE
 SEE SHEET 82 FOR -Y4RPA- PROFILE
 SEE SHEET 83 FOR -Y4RPA- PROFILE
 SEE SHEET 84 FOR -Y4RPA- PROFILE
 SEE SHEET 85 FOR -Y4RPA- PROFILE
 SEE SHEET 86 FOR -Y4RPA- PROFILE
 SEE SHEET 87 FOR -Y4RPA- PROFILE
 SEE SHEET 88 FOR -Y4RPA- PROFILE
 SEE SHEET 89 FOR -Y4RPA- PROFILE
 SEE SHEET 90 FOR -Y4RPA- PROFILE
 SEE SHEET 91 FOR -Y4RPA- PROFILE
 SEE SHEET 92 FOR -Y4RPA- PROFILE
 SEE SHEET 93 FOR -Y4RPA- PROFILE
 SEE SHEET 94 FOR -Y4RPA- PROFILE
 SEE SHEET 95 FOR -Y4RPA- PROFILE
 SEE SHEET 96 FOR -Y4RPA- PROFILE
 SEE SHEET 97 FOR -Y4RPA- PROFILE
 SEE SHEET 98 FOR -Y4RPA- PROFILE
 SEE SHEET 99 FOR -Y4RPA- PROFILE
 SEE SHEET 100 FOR -Y4RPA- PROFILE