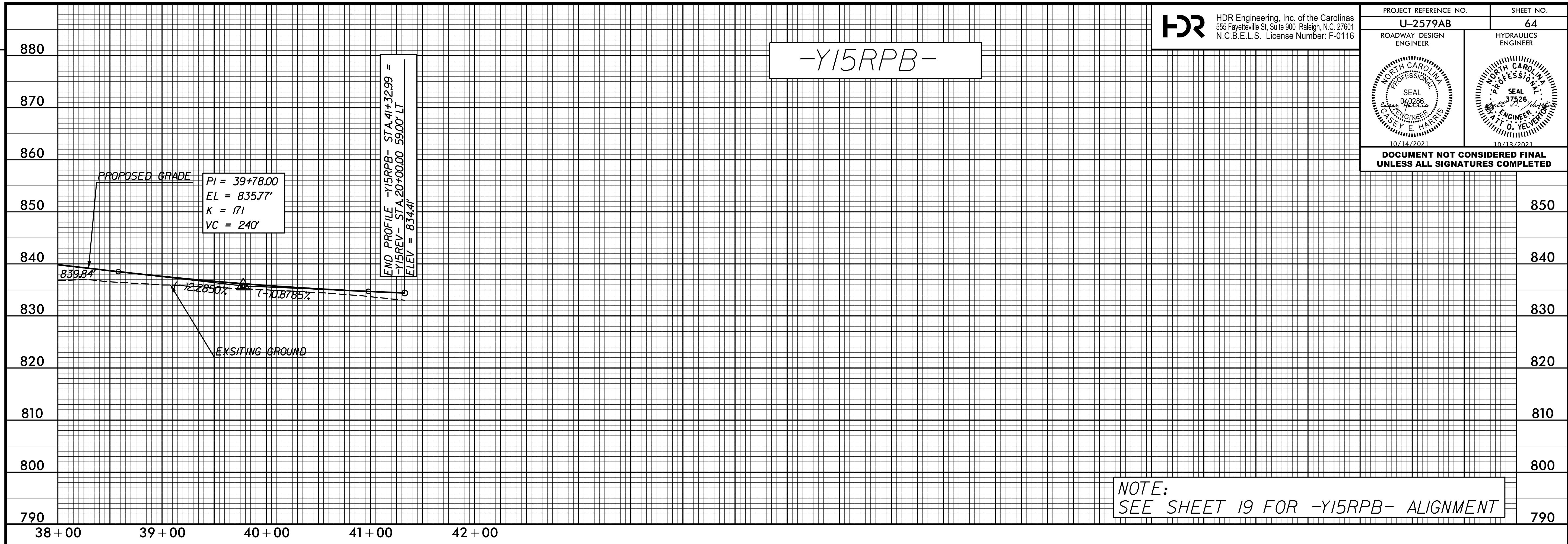
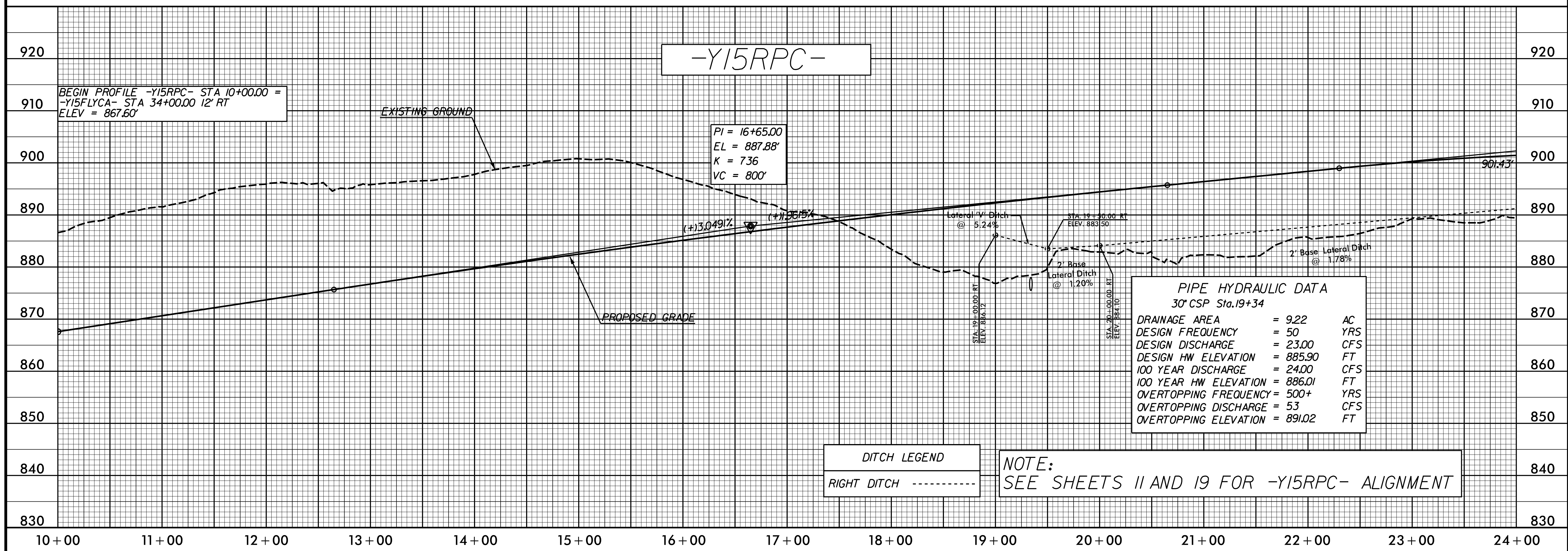


**DOCUMENT NOT CONSIDERED FINAL  
UNLESS ALL SIGNATURES COMPLETED**



**NOTE:**  
SEE SHEET 19 FOR -Y15RPB- ALIGNMENT



**PIPE HYDRAULIC DATA**  
30" CSP Sta.19+34

DRAINAGE AREA	= 9.22	AC
DESIGN FREQUENCY	= 50	YRS
DESIGN DISCHARGE	= 23.00	CFS
DESIGN HW ELEVATION	= 885.90	FT
100 YEAR DISCHARGE	= 24.00	CFS
100 YEAR HW ELEVATION	= 886.01	FT
OVERTOPPING FREQUENCY	= 500+	YRS
OVERTOPPING DISCHARGE	= 53	CFS
OVERTOPPING ELEVATION	= 891.02	FT

**DITCH LEGEND**  
RIGHT DITCH - - - - -

**NOTE:**  
SEE SHEETS 11 AND 19 FOR -Y15RPC- ALIGNMENT

PLOT DRIVER: NCDOT...color\_eng\_50.plt  
 USER: CHARRIS  
 DATE: 7/13/2021  
 TIME: 3:26:11 PM  
 FILE: NCDOT\NCDOT-U2579AB\6.0.CAD.BTM\6.2.Work.In\_Progress\U-2579AB\Roadway\Proj\U2579ab\_rdy\_dsh.plt.64.dgn

REVISIONS