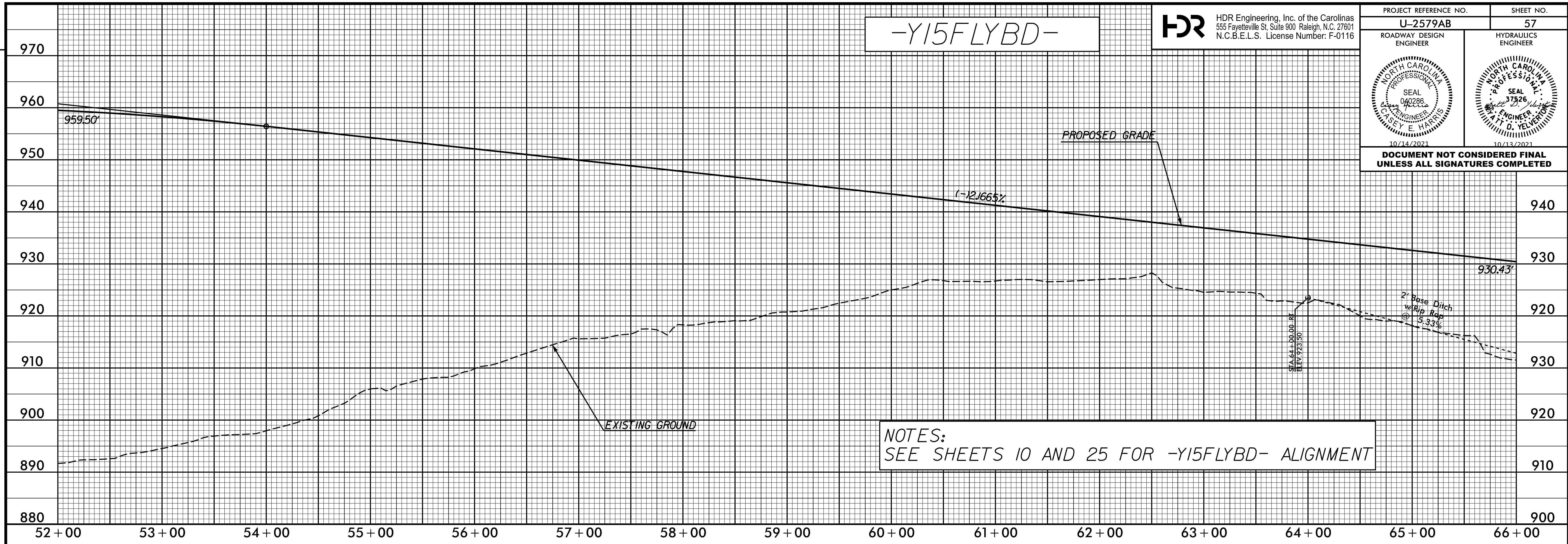
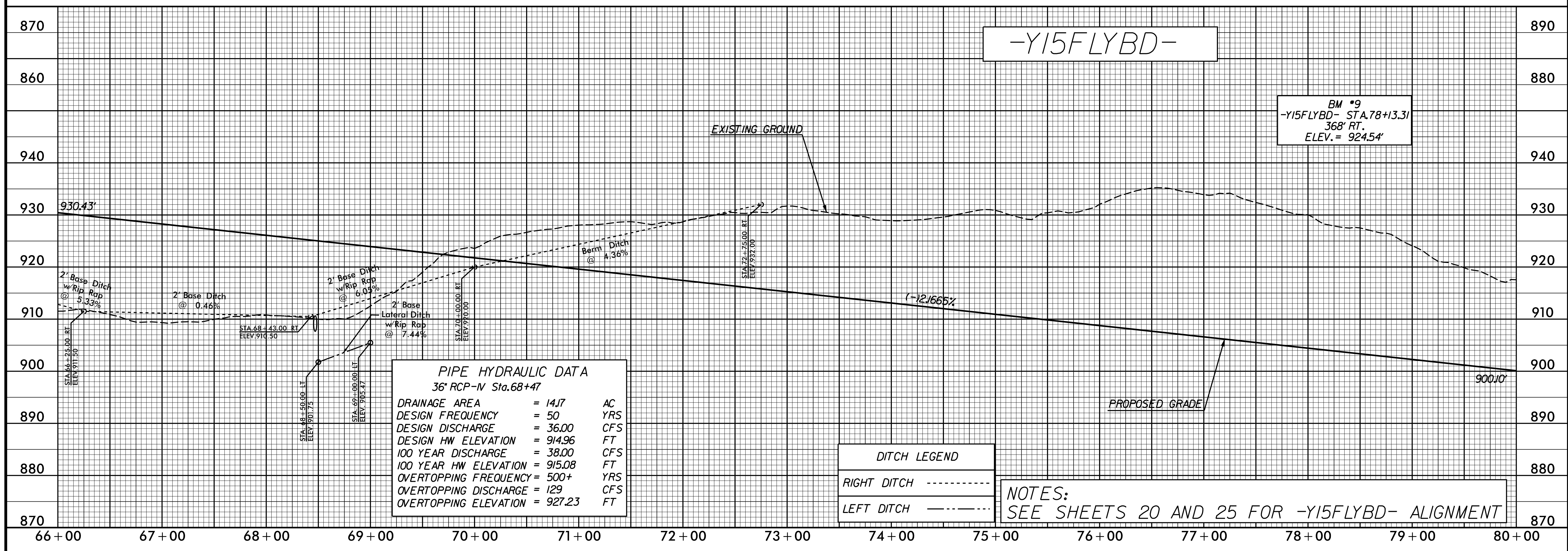


PROJECT REFERENCE NO. U-2579AB	SHEET NO. 57
ROADWAY DESIGN ENGINEER	HYDRAULICS ENGINEER
DOCUMENT NOT CONSIDERED FINAL UNLESS ALL SIGNATURES COMPLETED	



NOTES:
SEE SHEETS 10 AND 25 FOR -Y15FLYBD- ALIGNMENT



PIPE HYDRAULIC DATA
36" RCP-IV Sta. 68+47

DRAINAGE AREA	= 14.7	AC
DESIGN FREQUENCY	= 50	YRS
DESIGN DISCHARGE	= 36.00	CFS
DESIGN HW ELEVATION	= 914.96	FT
100 YEAR DISCHARGE	= 38.00	CFS
100 YEAR HW ELEVATION	= 915.08	FT
OVERTOPPING FREQUENCY	= 500+	YRS
OVERTOPPING DISCHARGE	= 129	CFS
OVERTOPPING ELEVATION	= 927.23	FT

DITCH LEGEND

RIGHT DITCH	-----
LEFT DITCH	-----

NOTES:
SEE SHEETS 20 AND 25 FOR -Y15FLYBD- ALIGNMENT

PLOT DRIVER: NCDOT_color_eng_50.plt
 USER: CHARRIS
 DATE: 7/13/2021
 TIME: 3:24:43 PM
 FILE: NCDOT\NCDOT-U2579AB\6.0.CAD.BTM\6.2.Work\In_Progress\U-2579AB\Roadway\Proj\U2579ab_rdy_psh.plt.57.dgn

REVISIONS