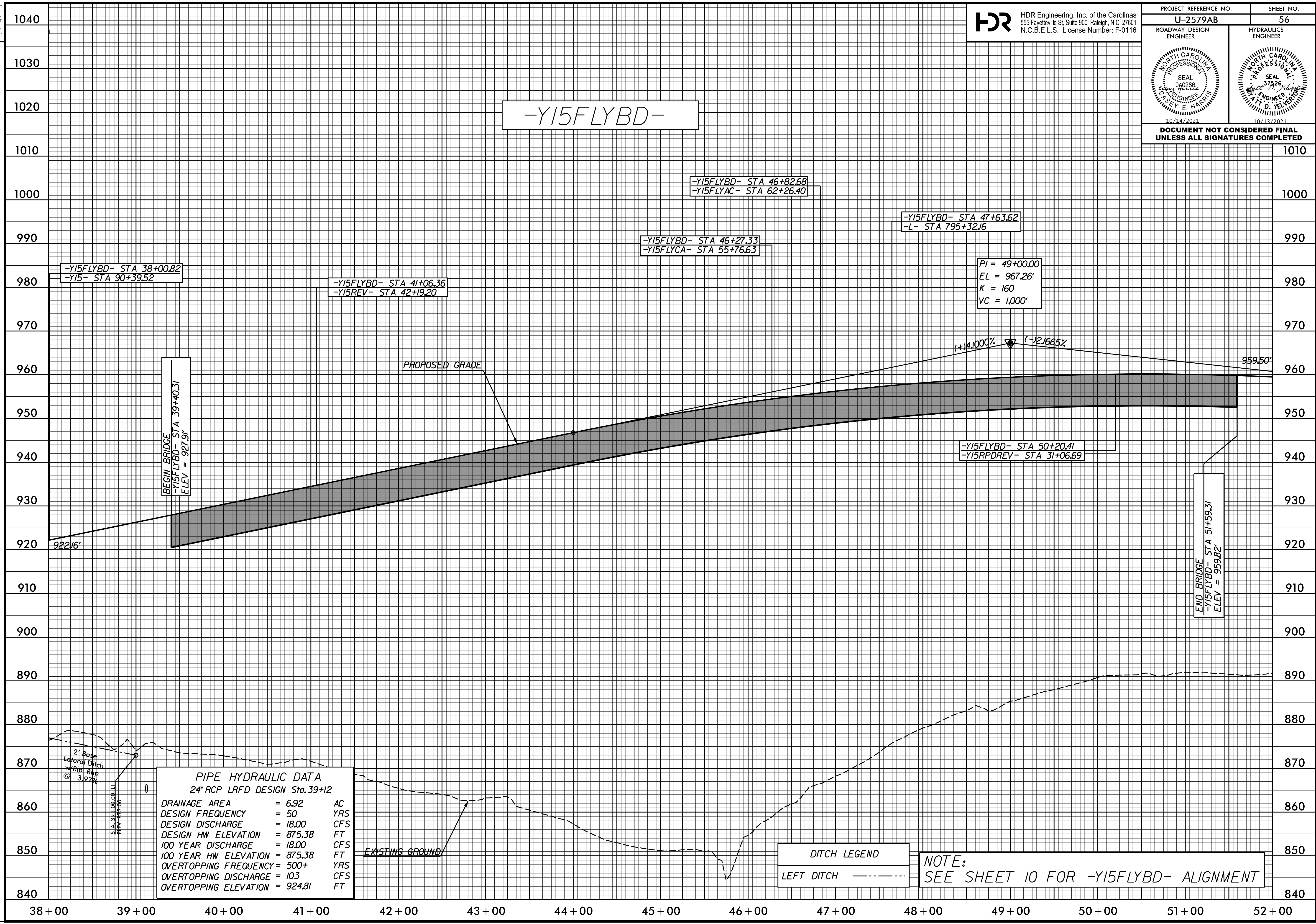


5/14/99

PROJECT REFERENCE NO. U-2579AB	SHEET NO. 56
ROADWAY DESIGN ENGINEER	HYDRAULICS ENGINEER
DOCUMENT NOT CONSIDERED FINAL UNLESS ALL SIGNATURES COMPLETED	



PIPE HYDRAULIC DATA
24" RCP LRFD DESIGN Sta. 39+12

DRAINAGE AREA	= 6.92	AC
DESIGN FREQUENCY	= 50	YRS
DESIGN DISCHARGE	= 18.00	CFS
DESIGN HW ELEVATION	= 875.38	FT
100 YEAR DISCHARGE	= 18.00	CFS
100 YEAR HW ELEVATION	= 875.38	FT
OVERTOPPING FREQUENCY	= 500+	YRS
OVERTOPPING DISCHARGE	= 103	CFS
OVERTOPPING ELEVATION	= 924.81	FT

DITCH LEGEND
LEFT DITCH - - - - -

NOTE:
SEE SHEET 10 FOR -Y15FLYBD- ALIGNMENT

PLOT DRIVER: NCDOT...color_eng_50.plt
 USER: CHARRIS
 DATE: 7/13/2021
 TIME: 3:24:31 PM
 FILE: NCDOT\NCDOT-U2579AB\6.0.CAD.BTM\6.2.Work\In_Progress\U-2579AB\Roadway\Proj\U2579ab_rdy_psh.plt.56.dgn

REVISIONS