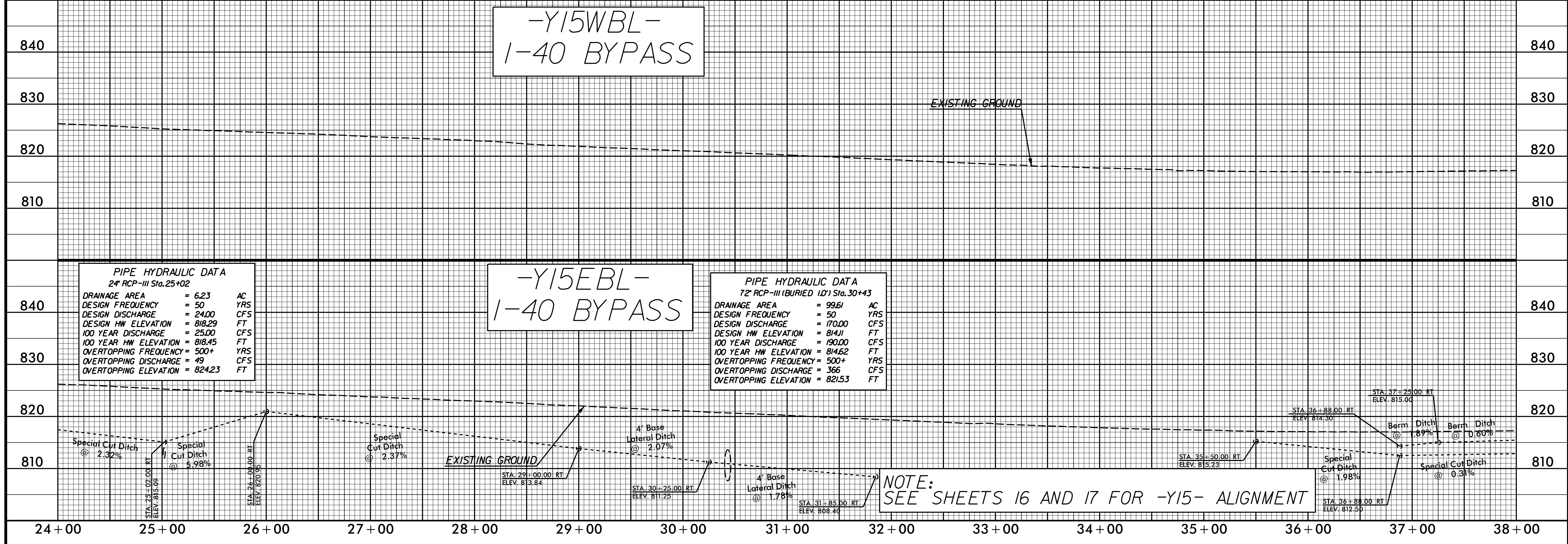
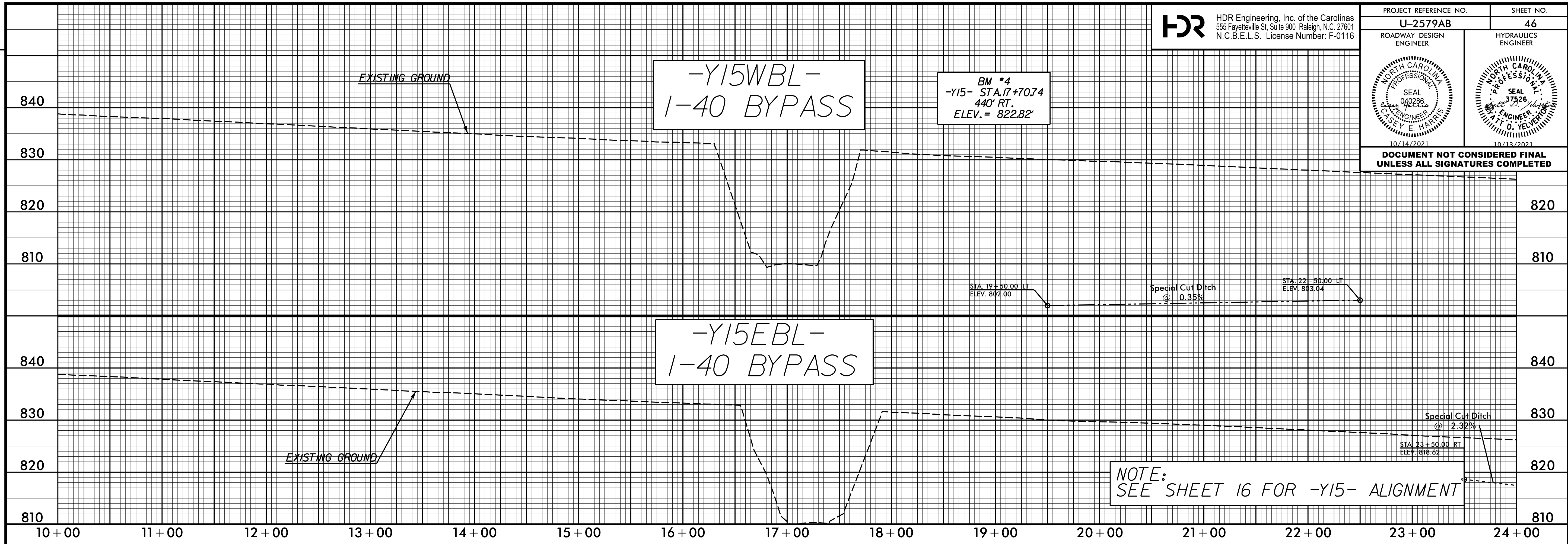


DOCUMENT NOT CONSIDERED FINAL UNLESS ALL SIGNATURES COMPLETED



PIPE HYDRAULIC DATA
24" RCP-III Sta. 25+02

DRAINAGE AREA	= 6.23	AC
DESIGN FREQUENCY	= 50	YRS
DESIGN DISCHARGE	= 24.00	CFS
DESIGN HW ELEVATION	= 818.29	FT
100 YEAR DISCHARGE	= 25.00	CFS
100 YEAR HW ELEVATION	= 818.45	FT
OVERTOPPING FREQUENCY	= 500+	YRS
OVERTOPPING DISCHARGE	= 49	CFS
OVERTOPPING ELEVATION	= 824.23	FT

PIPE HYDRAULIC DATA
72" RCP-III (BURIED 10') Sta. 30+43

DRAINAGE AREA	= 99.61	AC
DESIGN FREQUENCY	= 50	YRS
DESIGN DISCHARGE	= 170.00	CFS
DESIGN HW ELEVATION	= 814.11	FT
100 YEAR DISCHARGE	= 190.00	CFS
100 YEAR HW ELEVATION	= 814.62	FT
OVERTOPPING FREQUENCY	= 500+	YRS
OVERTOPPING DISCHARGE	= 366	CFS
OVERTOPPING ELEVATION	= 821.53	FT

REVISIONS

PLOT DRIVER: NCDOT_pdf_color_eng_50.plt
 USER: CHARRIS
 FILE: NCDOT\NCDOT-U2579AB\6.0.CAD.BTM\6.2.Work\In_Progress\U-2579AB\Roadway\Proj\U2579ab_rdy_dsh.plt_46.dgn

PENTABLE: NCDOT_pshp.pl_conventional.tbl
 DATE: 7/13/2021
 TIME: 3:22:17 PM