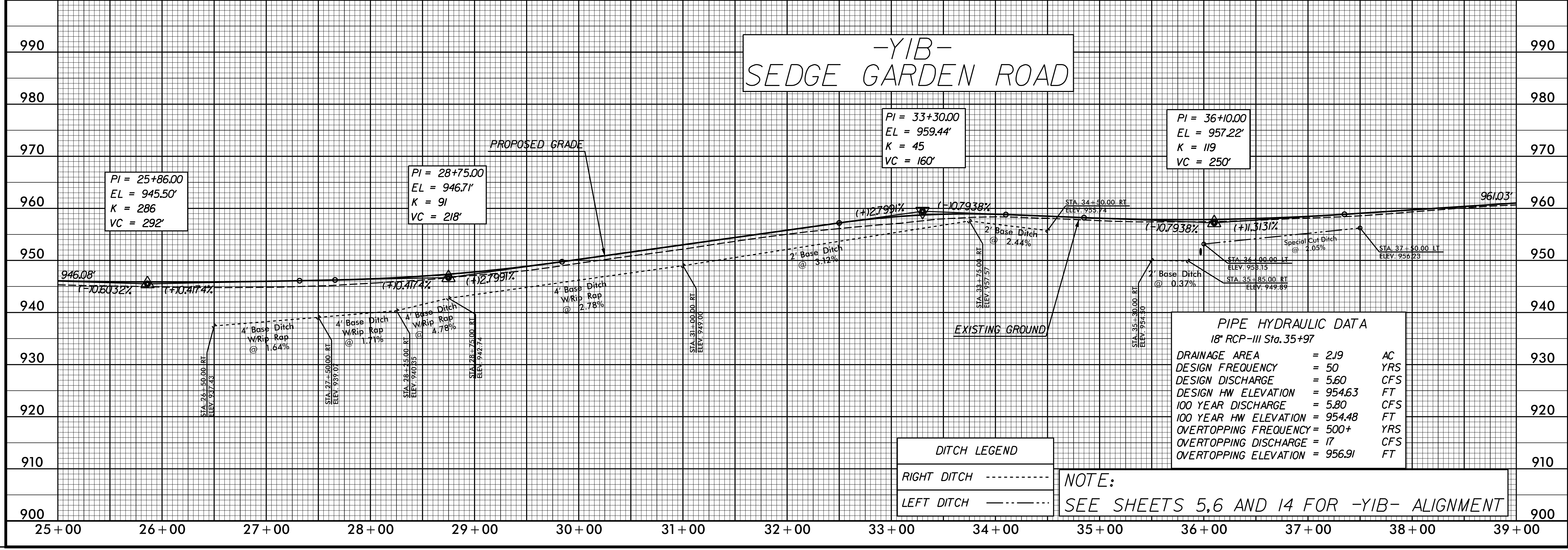


PIPE HYDRAULIC DATA
18" RCP-III Sta.18+00

DRAINAGE AREA	= 0.39	AC
DESIGN FREQUENCY	= 50	YRS
DESIGN DISCHARGE	= 0.99	CFS
DESIGN HW ELEVATION	= 946.60	FT
100 YEAR DISCHARGE	= 1.00	CFS
100 YEAR HW ELEVATION	= 946.60	FT
OVERTOPPING FREQUENCY	= 500+	YRS
OVERTOPPING DISCHARGE	= 16	CFS
OVERTOPPING ELEVATION	= 949.76	FT

NOTE:
SEE SHEET 5 FOR -YIB- ALIGNMENT



PIPE HYDRAULIC DATA
18" RCP-III Sta.35+97

DRAINAGE AREA	= 2.19	AC
DESIGN FREQUENCY	= 50	YRS
DESIGN DISCHARGE	= 5.60	CFS
DESIGN HW ELEVATION	= 954.63	FT
100 YEAR DISCHARGE	= 5.80	CFS
100 YEAR HW ELEVATION	= 954.48	FT
OVERTOPPING FREQUENCY	= 500+	YRS
OVERTOPPING DISCHARGE	= 17	CFS
OVERTOPPING ELEVATION	= 956.91	FT

DITCH LEGEND

RIGHT DITCH	-----
LEFT DITCH	-----

NOTE:
SEE SHEETS 5,6 AND 14 FOR -YIB- ALIGNMENT

REVISIONS

PLOT DRIVER: NCDOT_color_eng_50.plt
USER: CHARRIS
DATE: 7/13/2021
TIME: 3:19:50 PM
FILE: NCDOT\NCDOT-U2579AB\6.0.CAD.BTM\6.2.Work\In_Progress\U-2579AB\Roadway\Proj\U2579ab_rdy_dsh.plt_34.dgn