

-L-
W-S BELTWAY

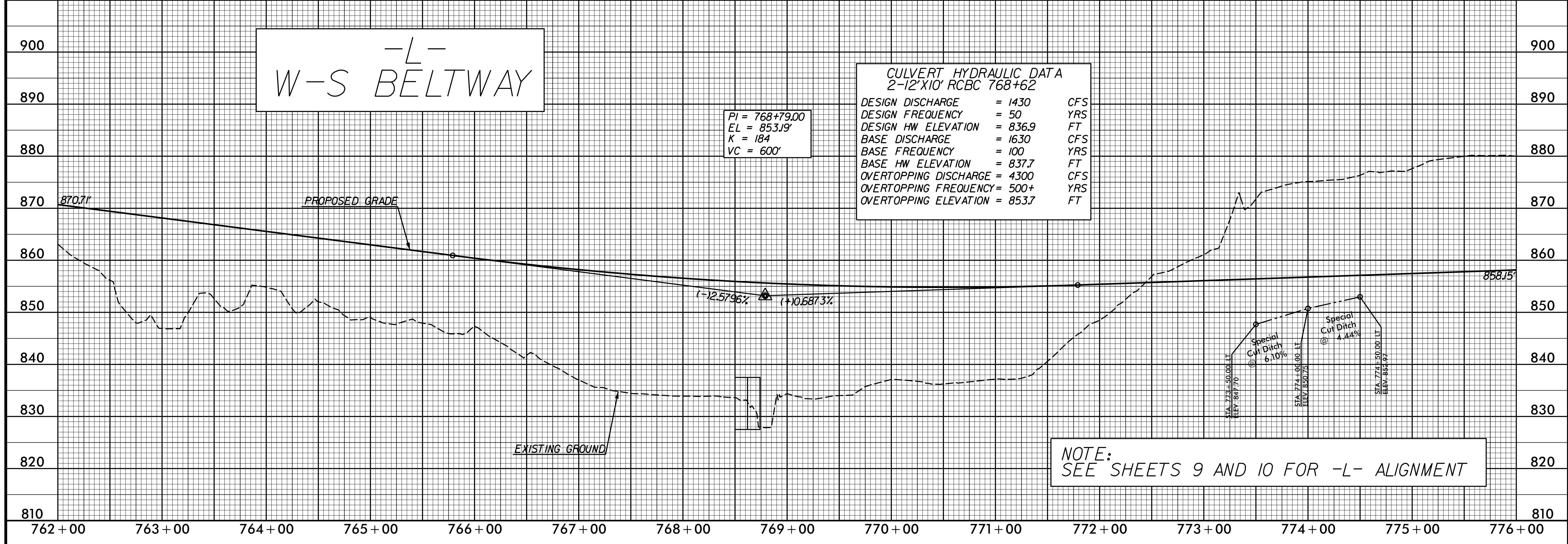
BM #2
-L- STA 759+77.80
680' LT.
ELEV. = 844.44'

DITCH LEGEND

LEFT DITCH - - - - -

RIGHT DITCH - - - - -

NOTE:
SEE SHEETS 8 AND 9 FOR -L- ALIGNMENT



-L-
W-S BELTWAY

PI = 768+79.00
EL = 853.19'
K = 184
VC = 600'

CULVERT HYDRAULIC DATA
2-12"x10' RCBC 768+62

DESIGN DISCHARGE	= 1430	CFS
DESIGN FREQUENCY	= 50	YRS
DESIGN HW ELEVATION	= 836.9	FT
BASE DISCHARGE	= 1630	CFS
BASE FREQUENCY	= 100	YRS
BASE HW ELEVATION	= 837.7	FT
OVERTOPPING DISCHARGE	= 4300	CFS
OVERTOPPING FREQUENCY	= 500+	YRS
OVERTOPPING ELEVATION	= 853.7	FT

NOTE:
SEE SHEETS 9 AND 10 FOR -L- ALIGNMENT

REVISIONS

PLOT DRIVER: NCDOT_color_eng_50.plt
 USER: CHARRIS
 DATE: 7/13/2021
 TIME: 3:18:49 PM
 FILE: NCDOT\NCDOT-U2579AB\6.0.CAD.BTM\6.2.Work\In_Progress\U-2579AB\Roadway\Proj\U2579ab_rdy_psh.plt_30.dgn