
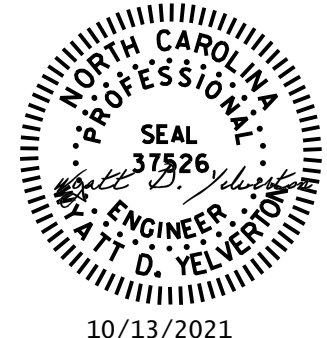

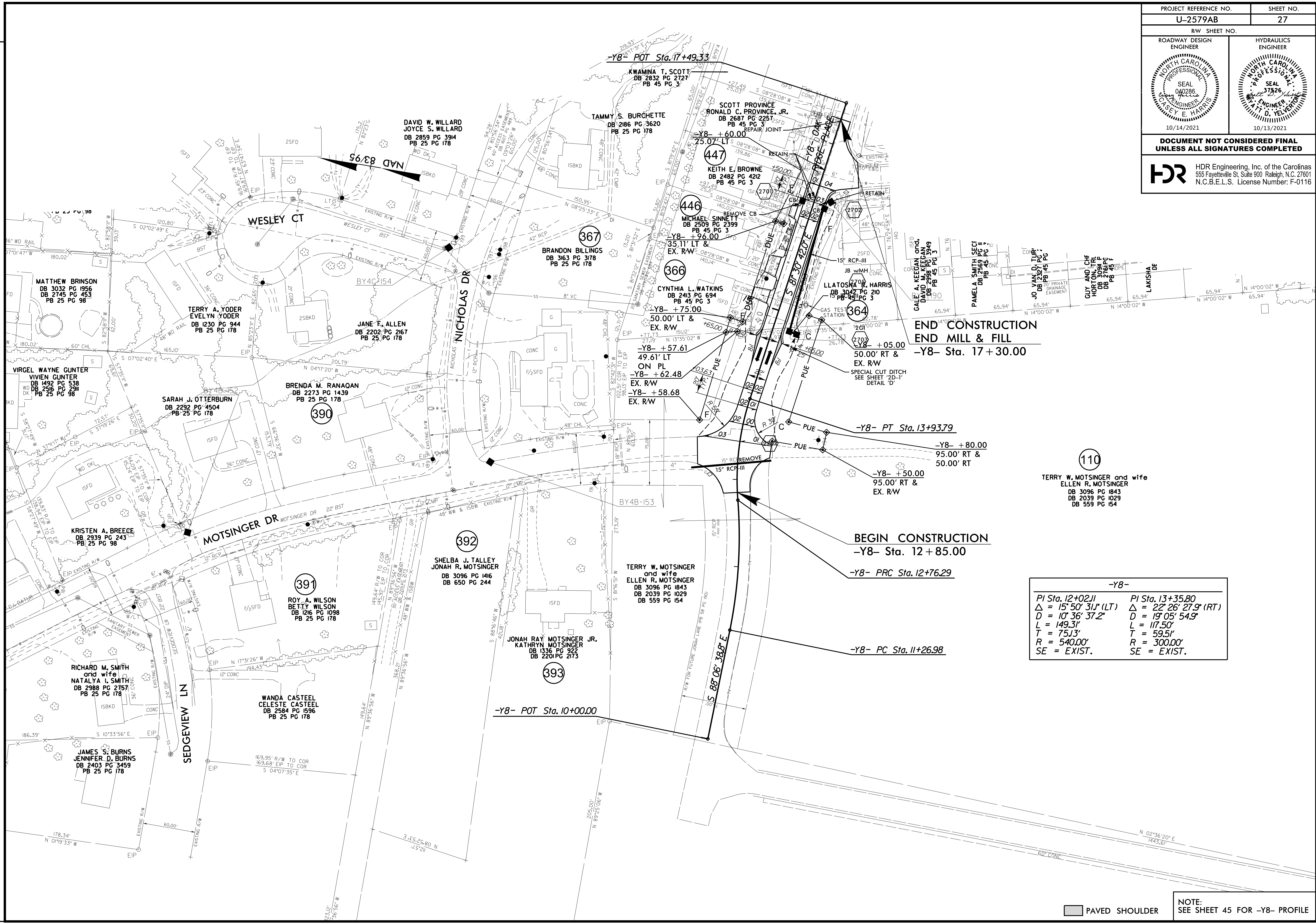


PROJECT REFERENCE NO. <b>U-2579AB</b>		SHEET NO. <b>27</b>	
RW SHEET NO.			
ROADWAY DESIGN ENGINEER		HYDRAULICS ENGINEER	
			
DOCUMENT NOT CONSIDERED FINAL UNLESS ALL SIGNATURES COMPLETED			
 HDR Engineering, Inc. of the Carolinas 555 Fayetteville St. Suite 900 Raleigh, N.C. 27601 N.C.B.E.L.S. License Number: F-0116			

REVISIONS  
ROW REV. - AUGUST 6, 2021 - EXISTING UTILITY EASEMENT CONVERTED TO PROPOSED DUE ON PARCELS 366 AND 446. TCE ADDED TO PARCELS 446 AND 447 (NEW CLAIMS). CEH.

PLOT DRIVER: NCDOT\_ncdot\_eng\_50.plt  
USER: SPEREIRA  
DATE: 9/15/2021  
TIME: 11:24:02 AM  
FILE: \



**END CONSTRUCTION  
END MILL & FILL**  
-Y8- Sta. 17+30.00

-Y8- PT Sta. 13+93.79

**BEGIN CONSTRUCTION**  
-Y8- Sta. 12+85.00

-Y8- PRC Sta. 12+76.29

-Y8- PC Sta. 11+26.98

-Y8- POT Sta. 10+00.00

-Y8-

PI Sta. 12+02.11	PI Sta. 13+35.80
$\Delta = 15' 50' 31''$ (LT)	$\Delta = 22' 26' 27''$ (RT)
$D = 10' 36' 37.2''$	$D = 19' 05' 54.9''$
$L = 149.31'$	$L = 117.50'$
$T = 75.13'$	$T = 59.51'$
$R = 540.00'$	$R = 300.00'$
$SE = EXIST.$	$SE = EXIST.$

 PAVED SHOULDER

NOTE:  
SEE SHEET 45 FOR -Y8- PROFILE