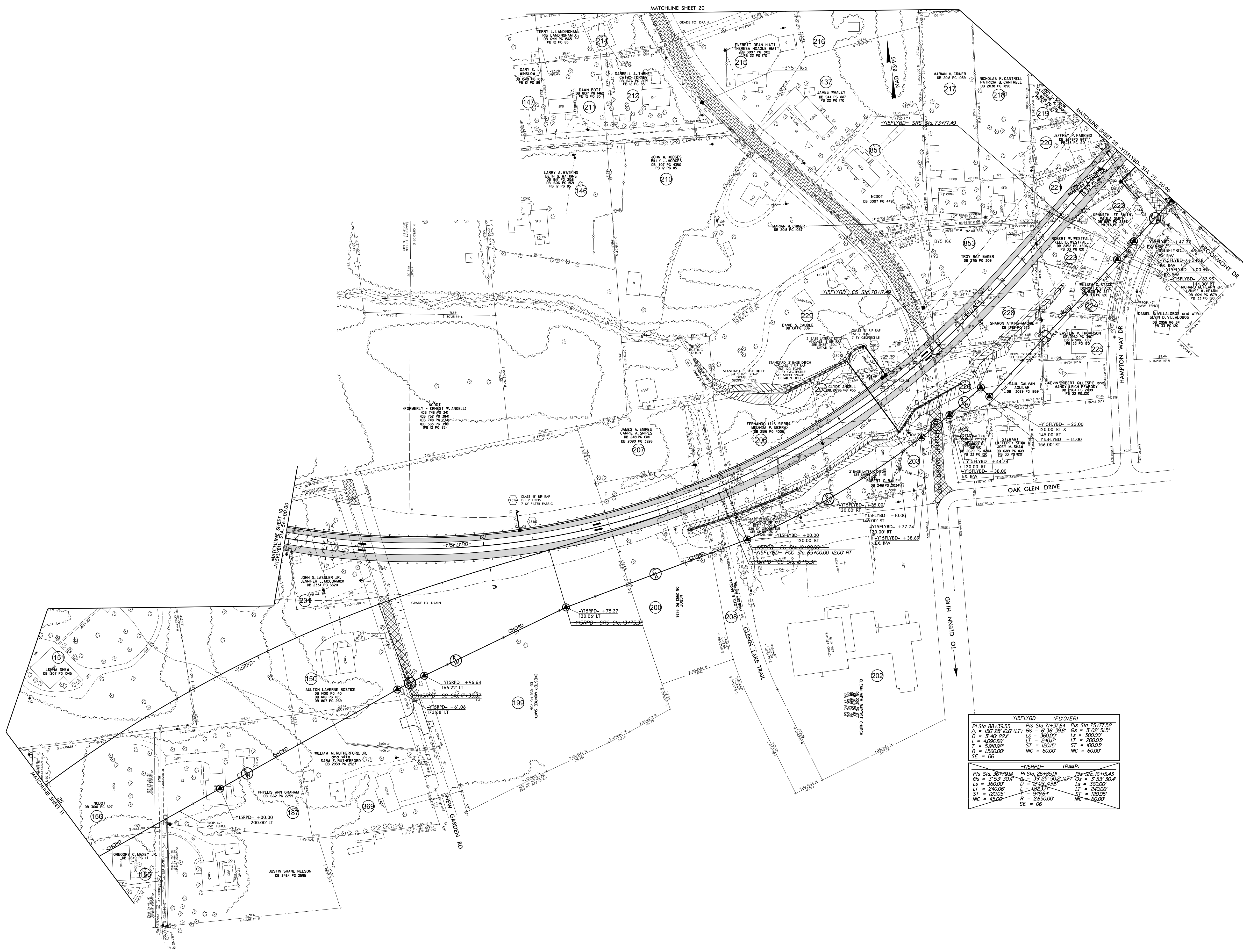


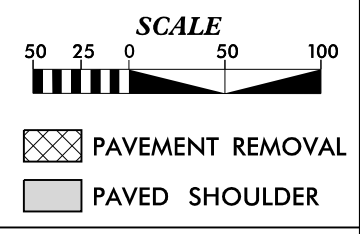
PROJECT REFERENCE NO.		SHEET NO.	
U-2579AB		25	
RW SHEET NO.			
ROADWAY DESIGN ENGINEER		HYDRAULICS ENGINEER	
DOCUMENT NOT CONSIDERED FINAL UNLESS ALL SIGNATURES COMPLETED			
HDR Engineering, Inc. of the Carolinas 555 Fayetteville St. Suite 900 Raleigh, N.C. 27601 N.C.B.E.L.S. License Number: F-0116			



-YISFLYBD- (FLYOVER)		
PI Sta. 88+39.55	PI Sta. 71+37.64	PI Sta. 75+77.50
Δ = 157.28 (25' LT)	Δ = 6.36 (35' ST)	Δ = 3.02 (5' ST)
D = 3' 40" 22.7'	Ls = 360.00'	Ls = 300.00'
L = 4296.86'	LT = 240.00'	LT = 200.00'
T = 539.52'	ST = 120.00'	ST = 100.00'
R = 1560.00'	INC = 60.00'	INC = 60.00'
SE = 06		
-YISBPO- (RAMP)		
PI Sta. 36+99.44	PI Sta. 26+85.01	PI Sta. 16+15.43
Δs = 3' 53" 30.4'	Δ = 37' 25" 50.2' LEFT	Δs = 3' 53" 30.4'
Ls = 360.00'	D = 295.435'	Ls = 360.00'
LT = 240.00'	L = 168.71'	LT = 240.00'
ST = 120.00'	T = 99.514'	ST = 120.00'
INC = 45.00'	R = 2650.00'	INC = 60.00'
SE = 06		

REVISIONS

PLOT DRIVER: NCDOT\_color\_eng\_100.plt  
 USER: SPEREIRA  
 FILE: \PENTABLE; NCDOT\_pshp.fl\conventi\ncol\tbl  
 DATE: 8/27/2021  
 TIME: 2:13:20 PM



NOTES:  
 SEE SHEET 57 FOR -YISFLYBD- PROFILE