
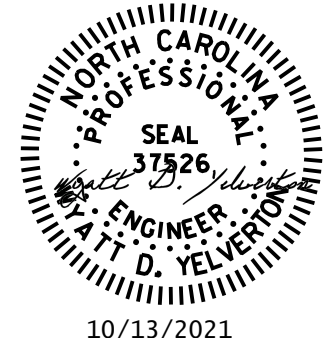


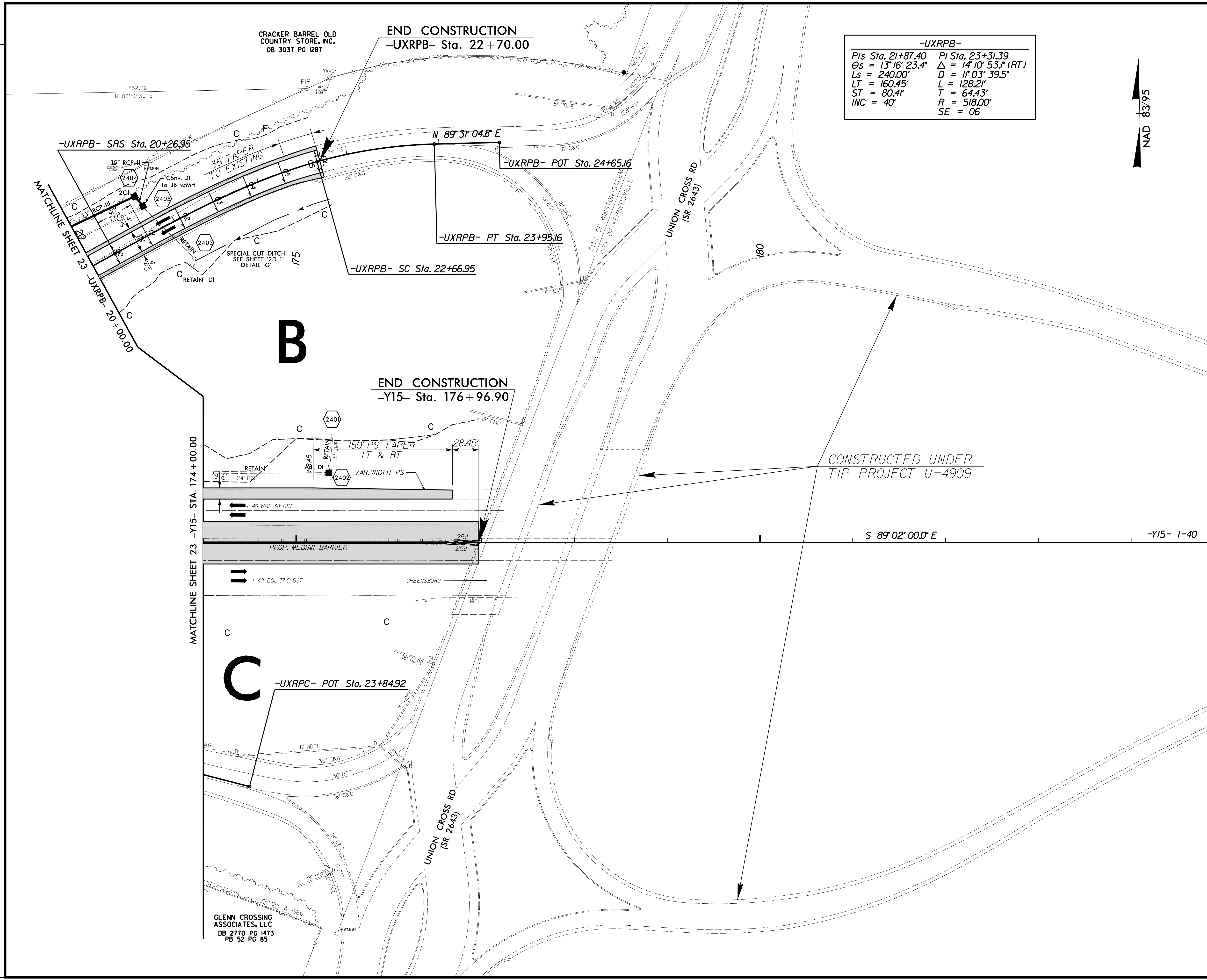


PROJECT REFERENCE NO.		SHEET NO.	
U-2579AB		24	
RW SHEET NO.			
ROADWAY DESIGN ENGINEER		HYDRAULICS ENGINEER	
			
10/14/2021		10/13/2021	
DOCUMENT NOT CONSIDERED FINAL UNLESS ALL SIGNATURES COMPLETED			
 HDR Engineering, Inc. of the Carolinas 555 Fayetteville St. Suite 900 Raleigh, N.C. 27601 N.C.B.E.L.S. License Number: F-0116			

-UXRPB-	
Pls Sta. 21+87.40	PI Sta. 23+31.39
$\theta_s = 13^\circ 16' 23.4"$	$\Delta = 14^\circ 10' 53.1" (RT)$
$L_s = 240.00'$	$D = 11^\circ 03' 39.5"$
$LT = 160.45'$	$L = 128.21'$
$ST = 80.41'$	$T = 64.43'$
$INC = 40'$	$R = 518.00'$
	$SE = 06$

NAD 83/95

**B**

**C**

REVISIONS

PLOT DRIVER: NCDOT\_color\_eng\_50.plt  
 USER: SPEREIRA  
 DATE: 8/27/2021  
 TIME: 2:09:10 PM

GLENN CROSSING ASSOCIATES, LLC  
 DB 2770 PG 1473  
 PB 52 PG 85

CRACKER BARREL OLD COUNTRY STORE, INC.  
 DB 3037 PG 1287

PAVED SHOULDER

NOTES:  
 SEE SHEET 51 FOR -Y15- PROFILE  
 SEE SHEET 71 FOR -UXRPB- PROFILE