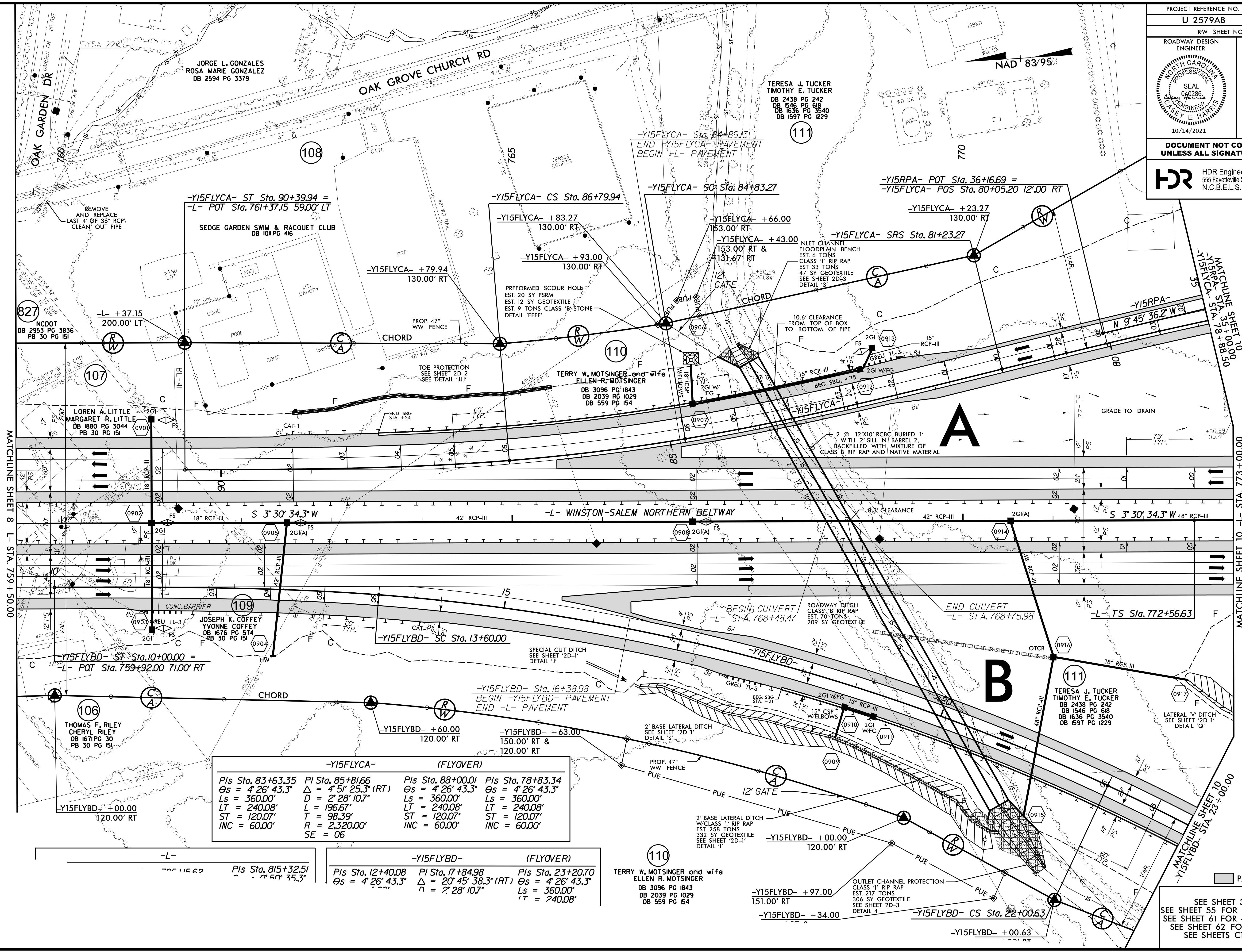


PROJECT REFERENCE NO. U-2579AB		SHEET NO. 9	
RW SHEET NO.		HYDRAULICS ENGINEER	
ROADWAY DESIGN ENGINEER		HYDRAULICS ENGINEER	
DOCUMENT NOT CONSIDERED FINAL UNLESS ALL SIGNATURES COMPLETED			

HDR HDR Engineering, Inc. of the Carolinas
555 Fayetteville St., Suite 900 Raleigh, N.C. 27601
N.C.B.E.L.S. License Number: F-0116



MATCHLINE SHEET 8 -L- STA. 759 + 50.00

MATCHLINE SHEET 10 -L- STA. 773 + 00.00

MATCHLINE SHEET 9 -L- STA. 768 + 00.00

MATCHLINE SHEET 10 -L- STA. 773 + 00.00

-Y15FLYCA- (FLYOVER)			
Pls Sta. 83+63.35	PI Sta. 85+81.66	Pls Sta. 88+00.01	Pls Sta. 78+83.34
Os = 4' 26" 43.3"	Δ = 4' 51" 25.3" (RT)	Os = 4' 26" 43.3"	Os = 4' 26" 43.3"
Ls = 360.00'	D = 2' 28" 10.7"	Ls = 360.00'	Ls = 360.00'
LT = 240.08'	L = 196.67'	LT = 240.08'	LT = 240.08'
ST = 120.07'	T = 98.39'	ST = 120.07'	ST = 120.07'
INC = 60.00'	R = 2,320.00'	INC = 60.00'	INC = 60.00'
	SE = 06		

-Y15FLYBD- (FLYOVER)			
Pls Sta. 12+40.08	PI Sta. 17+84.98	Pls Sta. 23+20.70	
Os = 4' 26" 43.3"	Δ = 20' 45" 38.3" (RT)	Os = 4' 26" 43.3"	
	D = 2' 28" 10.7"	Ls = 360.00'	
		LT = 240.08'	
		ST = 120.07'	
		INC = 60.00'	

-L-	
Pls Sta. 85+32.51	PI Sta. 87+50.33
Os = 4' 26" 43.3"	Δ = 4' 51" 25.3" (RT)
Ls = 360.00'	D = 2' 28" 10.7"
LT = 240.08'	L = 196.67'
ST = 120.07'	T = 98.39'
INC = 60.00'	R = 2,320.00'
	SE = 06

NOTES:
SEE SHEET 55 FOR -Y15FLYBD- PROFILE
SEE SHEET 61 FOR -Y15FLYCA- PROFILE
SEE SHEET 62 FOR -Y15RPA- PROFILE
SEE SHEETS C1-1 THRU C1-11 FOR CULVERT PLANS

PLOT DRIVER: NCDOT_color_eng_50.plt DATE: 8/27/2021 TIME: 2:04:07 PM
USER: SPEREIRA FILE: \

REVISIONS