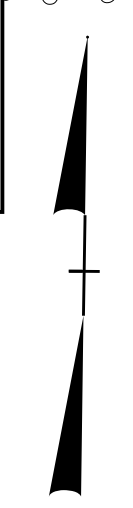
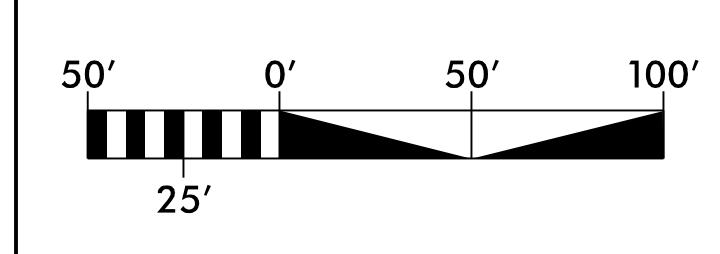


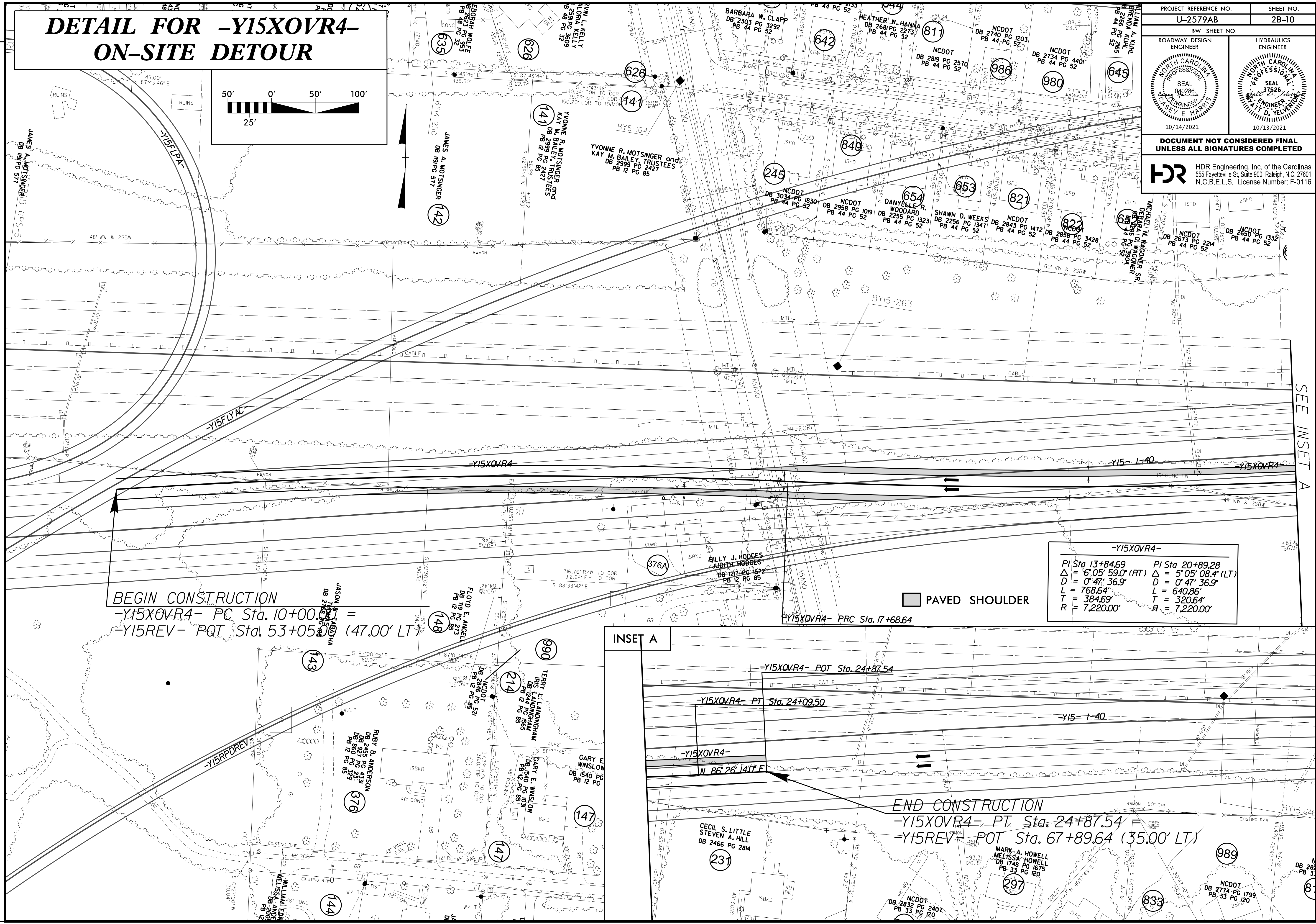
DETAIL FOR -Y15XOVR4- ON-SITE DETOUR



PROJECT REFERENCE NO. U-2579AB	SHEET NO. 2B-10
ROADWAY DESIGN ENGINEER	HYDRAULICS ENGINEER

**DOCUMENT NOT CONSIDERED FINAL
UNLESS ALL SIGNATURES COMPLETED**

HDR HDR Engineering, Inc. of the Carolinas
555 Fayetteville St. Suite 900 Raleigh, N.C. 27601
N.C.B.E.L.S. License Number: F-0116

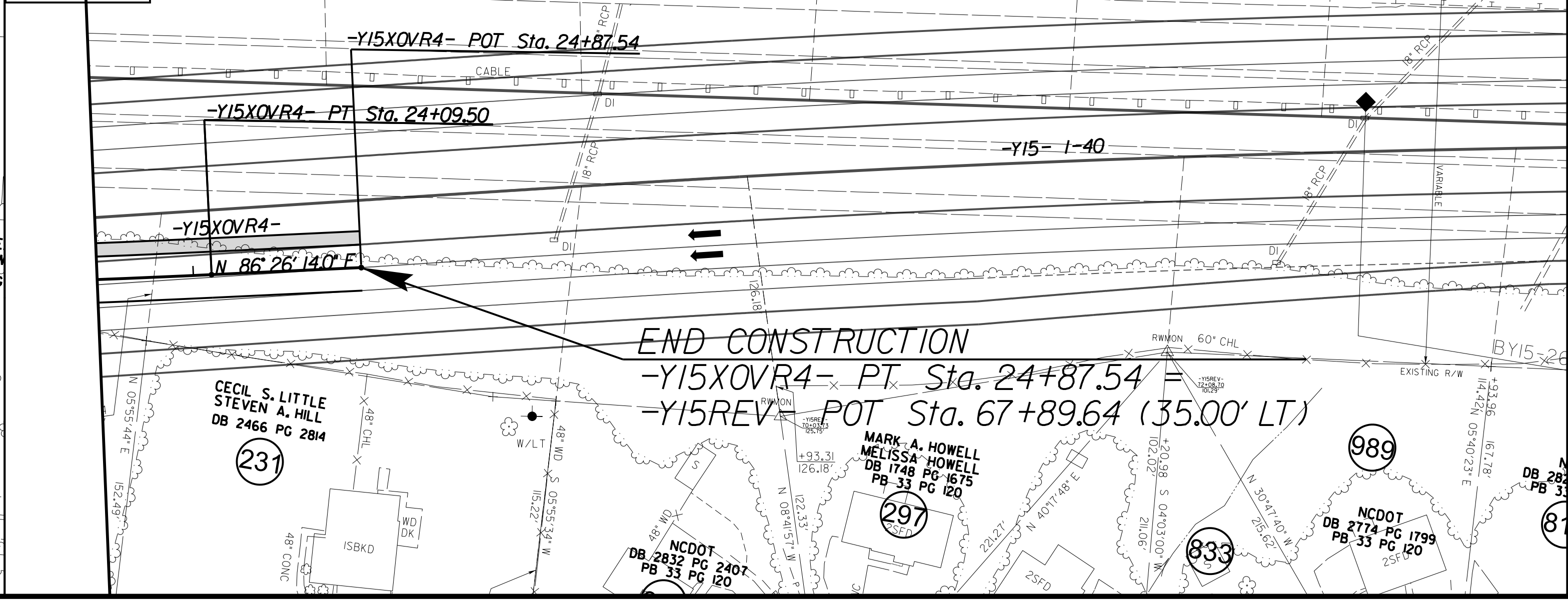


BEGIN CONSTRUCTION
 -Y15XOVR4- PC Sta. 10+00 =
 -Y15REV- POT Sta. 53+05 (47.00' LT)

-Y15XOVR4-	
PI Sta 13+84.69	PI Sta 20+89.28
$\Delta = 6^{\circ}05'59.0''$ (RT)	$\Delta = 5^{\circ}05'08.4''$ (LT)
D = 0'47'36.9"	D = 0'47'36.9"
L = 768.64'	L = 640.86'
T = 384.69'	T = 320.64'
R = 7,220.00'	R = 7,220.00'

PAVED SHOULDER

INSET A



REVISIONS

PLOT DRIVER: NCDOT_pdf_color_eng_50.plt
 USER: SPEREIRA
 FILE:
 PENTABLE: NCDOT_pshpfl_conventional.tbl
 TIME: 1:58:38 PM
 DATE: 8/27/2021

SEE INSET A