

DETAIL FOR -Y15XOVR2- ON-SITE DETOUR



259
DAVID J. SMITH
BETTY C. SMITH
DB 1009 PG 475

-Y15XOVR2- 269
PI Sta. 12+97.80 Δ = 6° 44' 58.5" (LT) L=594.90' T=297.80' R=5,050.00' SE=04 INC=50.00'
PI Sta. 18+92.70 Δ = 6° 44' 58.5" (RT) L=594.90' T=297.80' R=5,050.00' SE=04 INC=50.00'

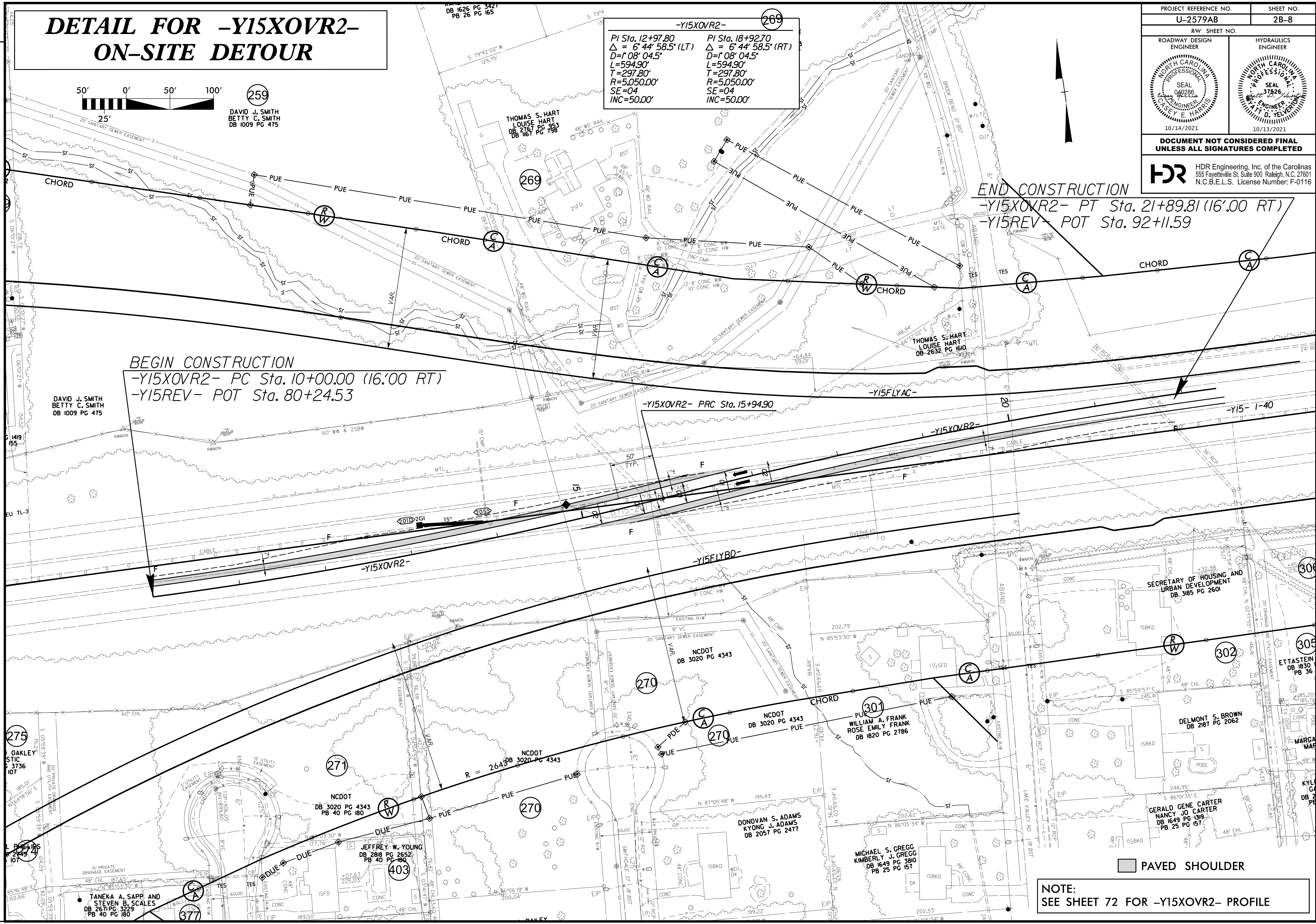
PROJECT REFERENCE NO. U-2579AB	SHEET NO. 2B-8
ROADWAY DESIGN ENGINEER	HYDRAULICS ENGINEER
10/14/2021	10/13/2021

**DOCUMENT NOT CONSIDERED FINAL
UNLESS ALL SIGNATURES COMPLETED**

HDR HDR Engineering, Inc. of the Carolinas
555 Fayetteville St. Suite 900 Raleigh, N.C. 27601
N.C.B.E.L.S. License Number: F-0116

END CONSTRUCTION
-Y15XOVR2- PT Sta. 21+89.81 (16'.00 RT)
-Y15REV- POT Sta. 92+11.59

BEGIN CONSTRUCTION
-Y15XOVR2- PC Sta. 10+00.00 (16'.00 RT)
-Y15REV- POT Sta. 80+24.53



PAVED SHOULDER

NOTE:
SEE SHEET 72 FOR -Y15XOVR2- PROFILE

PLOT DRIVER: NCDOT_pdf_color_eng_50.plt
USER: SPEREIRA
DATE: 8/27/2021
TIME: 1:58:11 PM
PENTABLE: NCDOT_pshpfl.conventional.tbl
FILE: \

REVISIONS