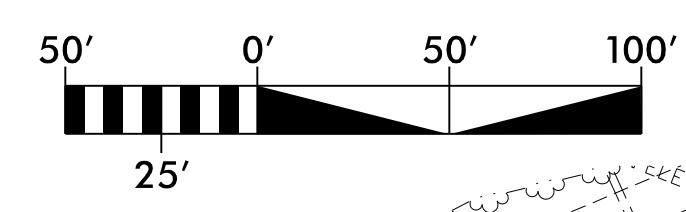
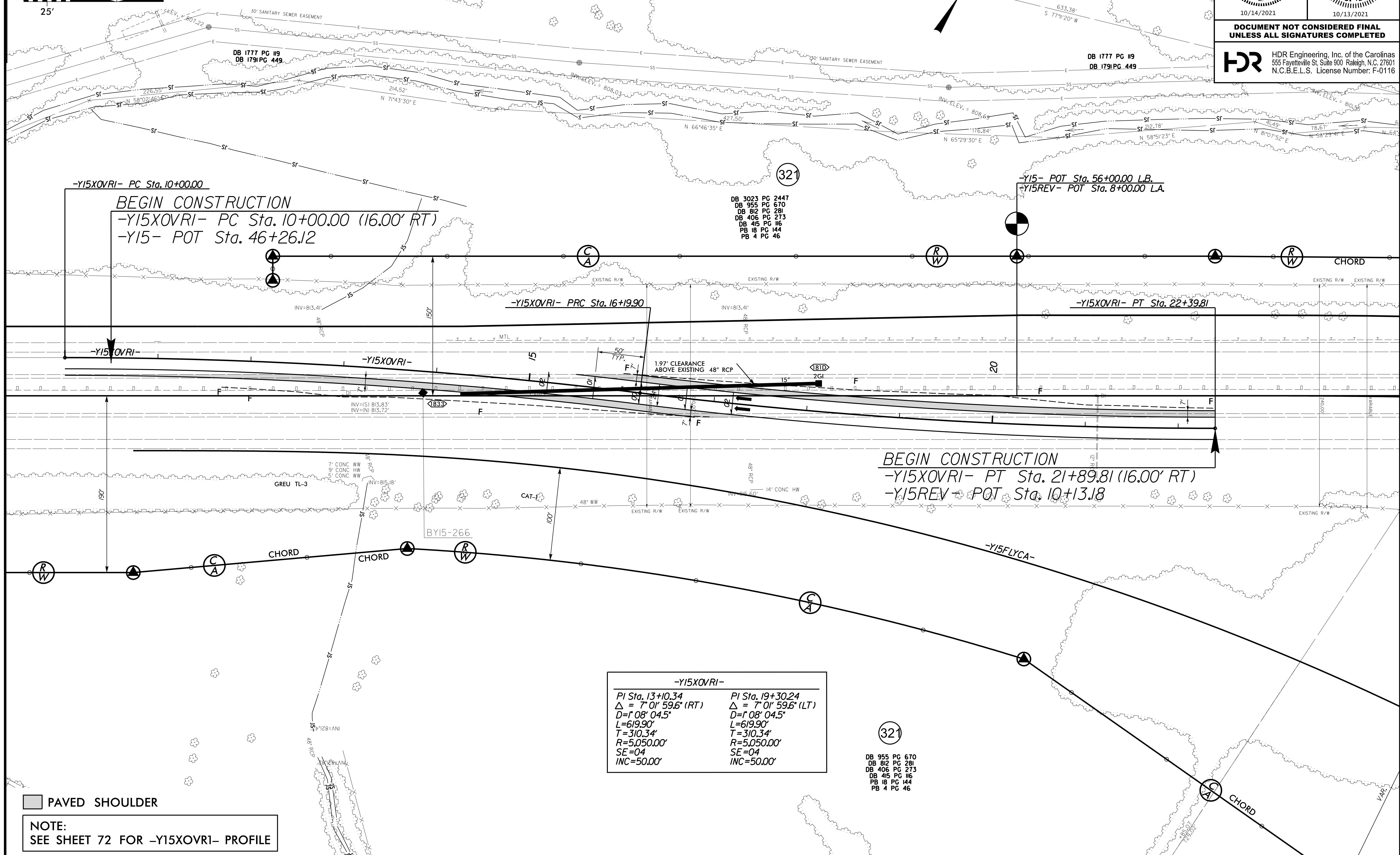


# DETAIL FOR -Y15XOVRI- ON-SITE DETOUR



PROJECT REFERENCE NO. <b>U-2579AB</b>		SHEET NO. <b>2B-7</b>	
ROADWAY DESIGN ENGINEER		HYDRAULICS ENGINEER	
10/14/2021		10/13/2021	
<b>DOCUMENT NOT CONSIDERED FINAL UNLESS ALL SIGNATURES COMPLETED</b>			
<b>HDR Engineering, Inc. of the Carolinas</b> 555 Fayetteville St. Suite 900 Raleigh, N.C. 27601 N.C.B.E.L.S. License Number: F-0116			



PAVED SHOULDER

NOTE:  
SEE SHEET 72 FOR -Y15XOVRI- PROFILE

-Y15XOVRI-	
PI Sta. 13+10.34	PI Sta. 19+30.24
$\Delta = 7^{\circ} 01' 59.6''$ (RT)	$\Delta = 7^{\circ} 01' 59.6''$ (LT)
$D = 1^{\circ} 08' 04.5''$	$D = 1^{\circ} 08' 04.5''$
$L = 619.90'$	$L = 619.90'$
$T = 310.34'$	$T = 310.34'$
$R = 5050.00'$	$R = 5050.00'$
$SE = 04$	$SE = 04$
$INC = 50.00'$	$INC = 50.00'$

DB 955 PG 670  
 DB 812 PG 281  
 DB 406 PG 273  
 DB 415 PG 116  
 PB 18 PG 144  
 PB 4 PG 46

REVISIONS

PLOT DRIVER: NCDOT\_color\_eng\_50.plt  
 USER: SPEREIRA  
 FILE: \

PENTABLE: NCDOT\_pshpfl\_conventional.tbl  
 DATE: 8/27/2021  
 TIME: 1:57:59 PM