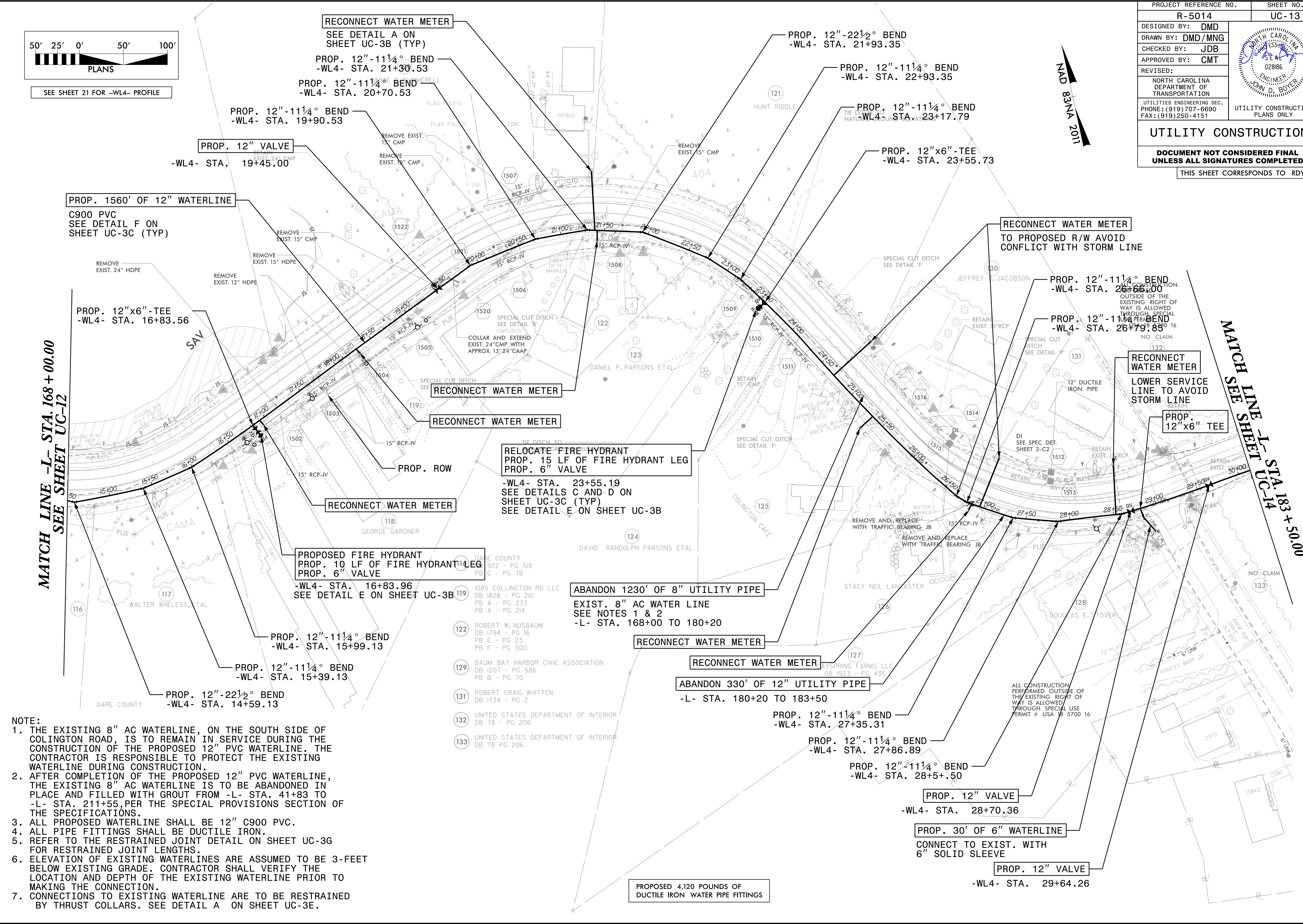
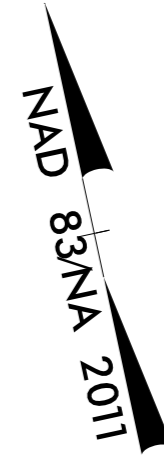
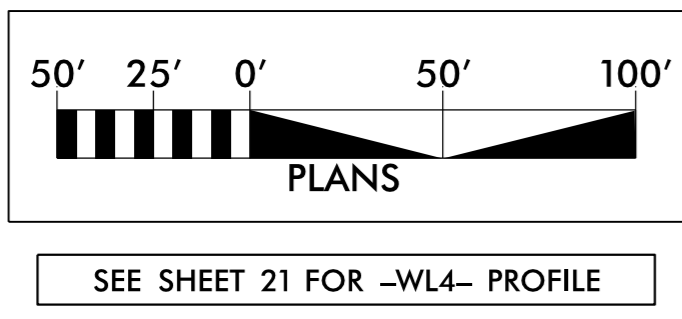


PROJECT REFERENCE NO.	SHEET NO.
R-5014	UC-13
DESIGNED BY: DMD	
DRAWN BY: DMD/MNG	
CHECKED BY: JDB	
APPROVED BY: CMT	
REVISED:	UTILITY CONSTRUCTION PLANS ONLY
NORTH CAROLINA DEPARTMENT OF TRANSPORTATION	
UTILITIES ENGINEERING SEC. PHONE: (919) 707-6690 FAX: (919) 250-4151	
UTILITY CONSTRUCTION	
DOCUMENT NOT CONSIDERED FINAL UNLESS ALL SIGNATURES COMPLETED	
THIS SHEET CORRESPONDS TO RDY-15	



- NOTE:**
1. THE EXISTING 8" AC WATERLINE, ON THE SOUTH SIDE OF COLINGTON ROAD, IS TO REMAIN IN SERVICE DURING THE CONSTRUCTION OF THE PROPOSED 12" PVC WATERLINE. THE CONTRACTOR IS RESPONSIBLE TO PROTECT THE EXISTING WATERLINE DURING CONSTRUCTION.
 2. AFTER COMPLETION OF THE PROPOSED 12" PVC WATERLINE, THE EXISTING 8" AC WATERLINE IS TO BE ABANDONED IN PLACE AND FILLED WITH GROUT FROM -L- STA. 41+83 TO -L- STA. 211+55, PER THE SPECIAL PROVISIONS SECTION OF THE SPECIFICATIONS.
 3. ALL PROPOSED WATERLINE SHALL BE 12" C900 PVC.
 4. ALL PIPE FITTINGS SHALL BE DUCTILE IRON.
 5. REFER TO THE RESTRAINED JOINT DETAIL ON SHEET UC-3G FOR RESTRAINED JOINT LENGTHS.
 6. ELEVATION OF EXISTING WATERLINES ARE ASSUMED TO BE 3- FEET BELOW EXISTING GRADE. CONTRACTOR SHALL VERIFY THE LOCATION AND DEPTH OF THE EXISTING WATERLINE PRIOR TO MAKING THE CONNECTION.
 7. CONNECTIONS TO EXISTING WATERLINE ARE TO BE RESTRAINED BY THRUST COLLARS. SEE DETAIL A ON SHEET UC-3E.

- 1085 COLLINGTON RD LLC
DB 1828 - PG 210
PB A - PG 233
PB A - PG 214
- 122 ROBERT W. NUSBAUM
DB 1794 - PG 16
PB E - PG 23
PB F - PG 300
- 129 BAUM BAY HARBOR CIVIC ASSOCIATION
DB 1207 - PG 586
PB B - PG 70
- 131 ROBERT CRAIG WHITTEN
DB 1734 - PG 2
- 132 UNITED STATES DEPARTMENT OF INTERIOR
DB 78 - PG 206
- 133 UNITED STATES DEPARTMENT OF INTERIOR
DB 78 PG 206

REVISIONS

8/17/99
SYSTEM: R5014_U1_UC13_psh.dgn
USER: GYANTM

MATCH LINE -L- STA. 168 + 00.00
SEE SHEET UC-12

MATCH LINE -L- STA. 183 + 50.00
SEE SHEET UC-14