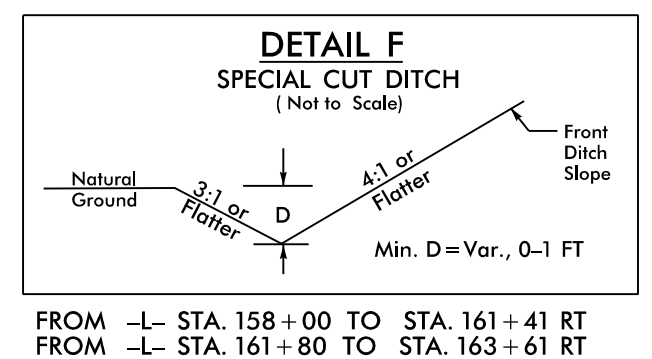
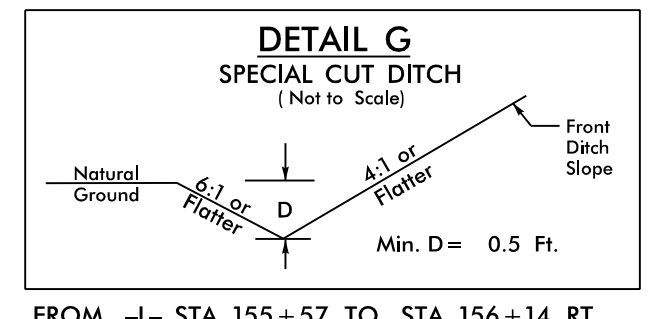
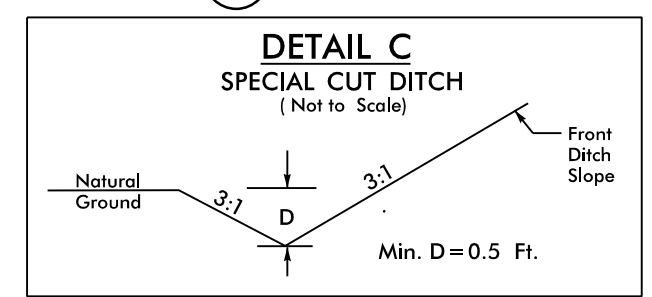
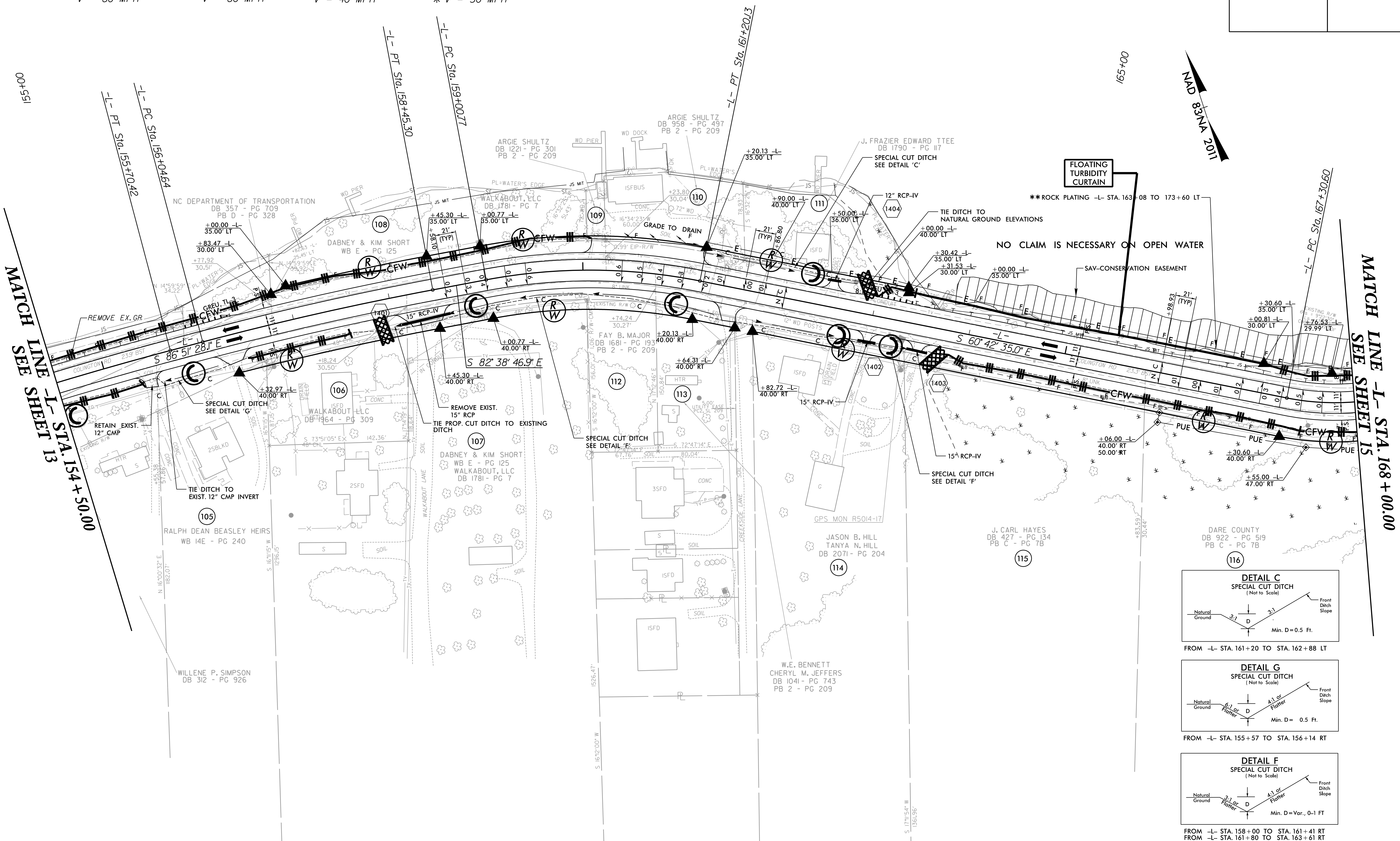


PROJECT REFERENCE NO. R-5014	SHEET NO. EC-31/CONST.14
RW SHEET NO.	
ROADWAY DESIGN ENGINEER	HYDRAULICS ENGINEER

<p>PI Sta 151+21.7 Δ = 14° 36' 20.0" (RT) D = 1° 37' 00.0" L = 903.44' T = 454.18' R = 3,544.07' SE = 2% RO = 42' V = 80 MPH</p>	<p>PI Sta 157+25.02 Δ = 4° 12' 41.2" (RT) D = 1° 45' 00.0" L = 240.65' T = 120.38' R = 3,274.04' SE = 2% RO = 42' V = 80 MPH</p>	<p>PI Sta 160+11.81 Δ = 21° 56' 11.8" (RT) D = 10° 00' 00.0" L = 219.37' T = 111.04' R = 572.96' SE = 6% RO = 126' V = 40 MPH</p>	<p>PI Sta 168+56.10 Δ = 53° 18' 40.2" (LT) D = 22° 55' 05.9" L = 232.61' T = 125.49' R = 250.00' SE = 6% RO = 126' * V = 30 MPH</p>
--	--	---	---



NOTES:
* DESIGN EXCEPTION REQUIRED FOR MINIMUM HORIZONTAL CURVE RADIUS AND HORIZONTAL SSD
** SEE SHEET 26-1 FOR GEOTECHNICAL DETAILS
DRIVEWAY RADII ARE 10' UNLESS OTHERWISE NOTED
SEE SHEET 26 FOR -L- PROFILE
SAV = SUBMERGED AQUATIC VEGETATION

PAVED SHOULDER

REVISIONS

8/17/99
I:\5208\commental\Design\RE014_hyd_EC_psh_31.dgn
10/20/08