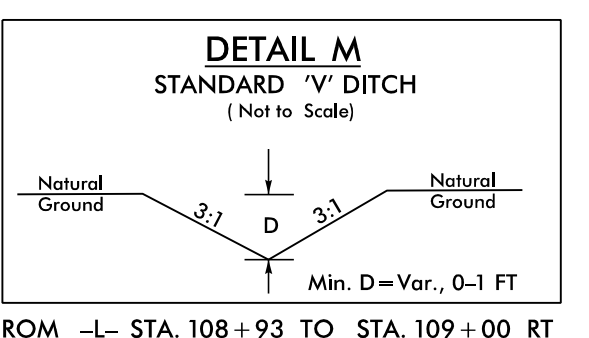
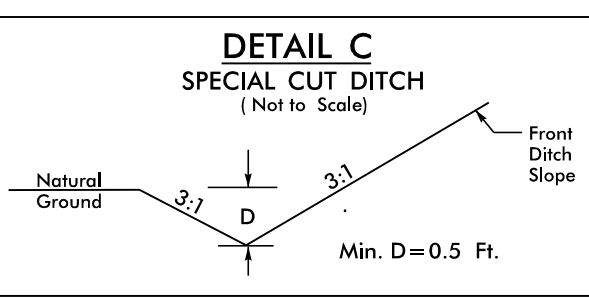
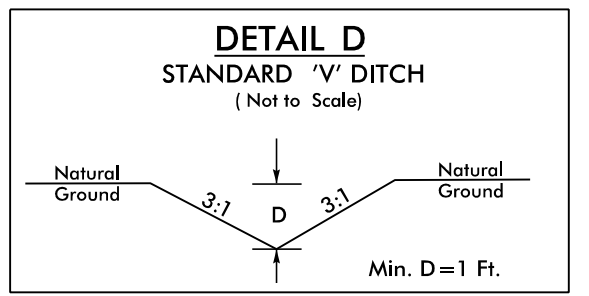
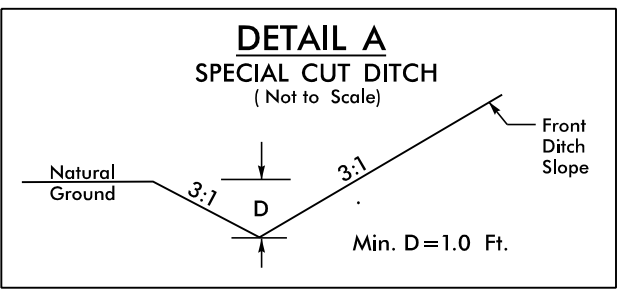
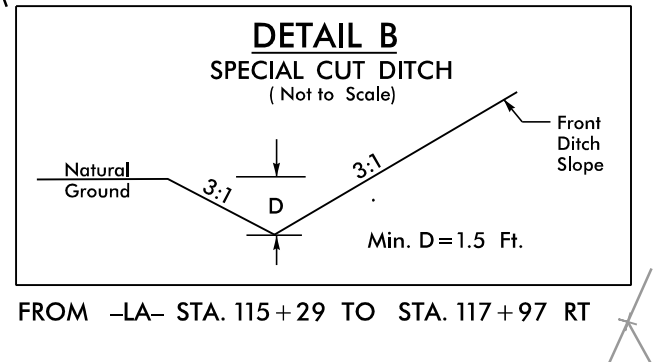
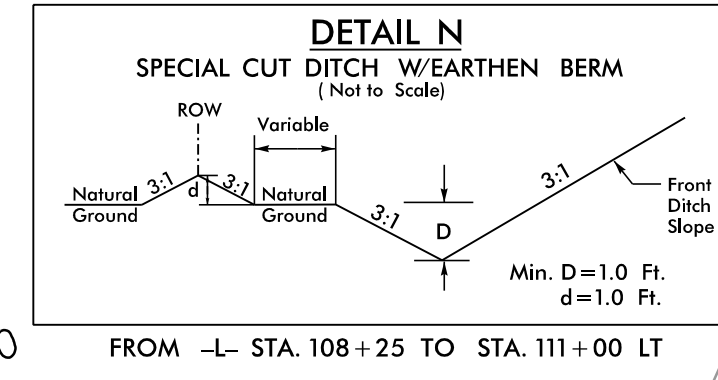
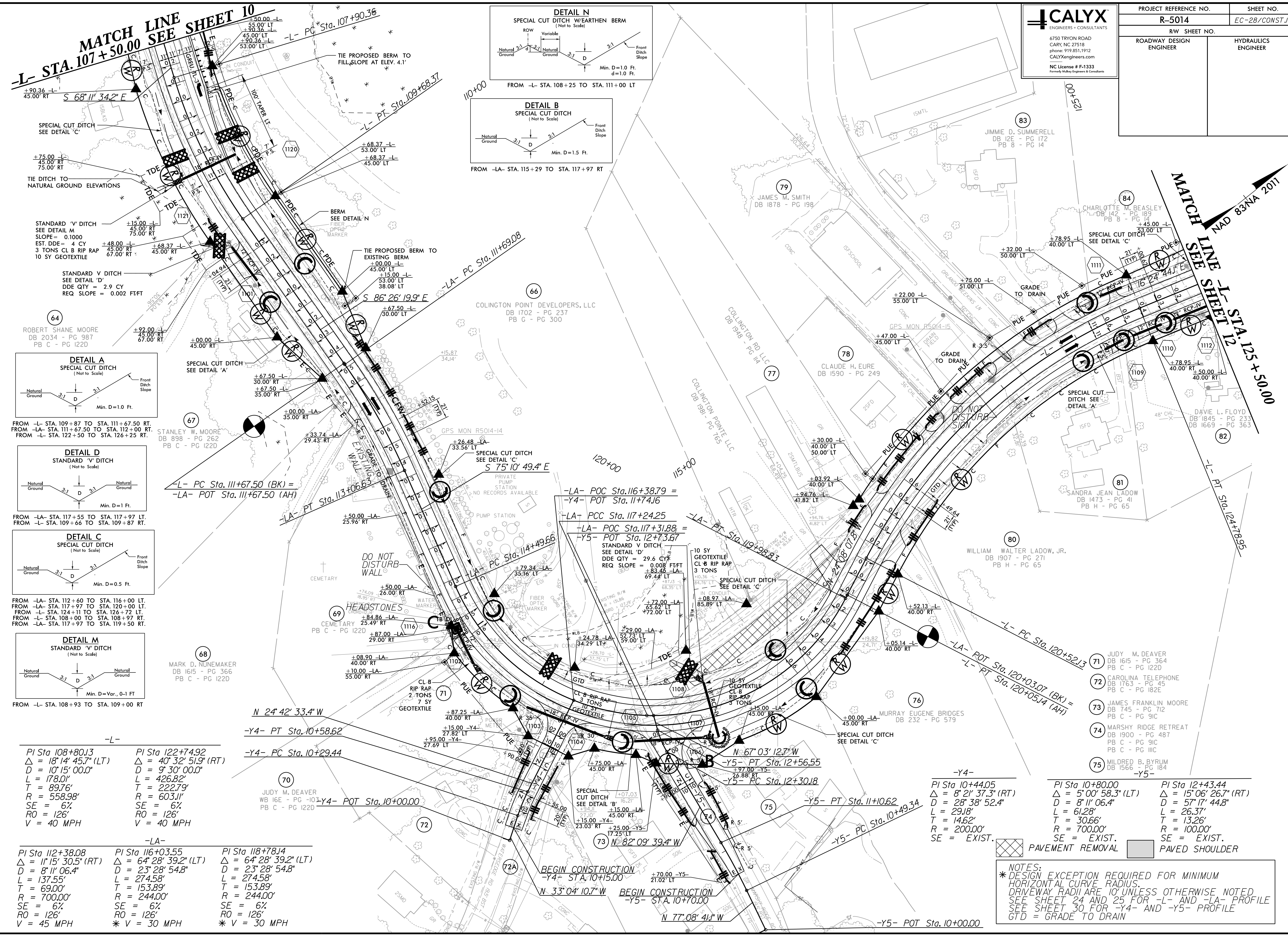


PROJECT REFERENCE NO.	SHEET NO.
R-5014	EC-28/CONST.11
RW SHEET NO.	
ROADWAY DESIGN ENGINEER	HYDRAULICS ENGINEER



<p>PI Sta 108+80.13 Δ = 18° 14' 45.7" (LT) D = 10' 15" 00.0" L = 178.0' T = 89.76' R = 558.98' SE = 6% RO = 126' V = 40 MPH</p>	<p>PI Sta 122+74.92 Δ = 40° 32' 51.9" (RT) D = 9' 30" 00.0" L = 426.82' T = 222.79' R = 603.11' SE = 6% RO = 126' V = 40 MPH</p>
---	--

<p>PI Sta 112+38.08 Δ = 11° 15' 30.5" (RT) D = 8' 11" 06.4" L = 137.55' T = 69.00' R = 700.00' SE = 6% RO = 126' V = 45 MPH</p>	<p>PI Sta 116+03.55 Δ = 64° 28' 39.2" (LT) D = 23' 28" 54.8" L = 274.58' T = 153.89' R = 244.00' SE = 6% RO = 126' * V = 30 MPH</p>	<p>PI Sta 118+78.14 Δ = 64° 28' 39.2" (LT) D = 23' 28" 54.8" L = 274.58' T = 153.89' R = 244.00' SE = 6% RO = 126' * V = 30 MPH</p>
---	---	---

NOTES:
* DESIGN EXCEPTION REQUIRED FOR MINIMUM HORIZONTAL CURVE RADIUS.
DRIVEWAY RADII ARE 10' UNLESS OTHERWISE NOTED.
SEE SHEET 24 AND 25 FOR -L- AND -LA- PROFILE.
SEE SHEET 30 FOR -Y4- AND -Y5- PROFILE.
GTD = GRADE TO DRAIN

REVISIONS

8/17/99
 I:\512018\commentary\Design\RE014_hyd_EC_psh_28.dwg
 11/5/2018