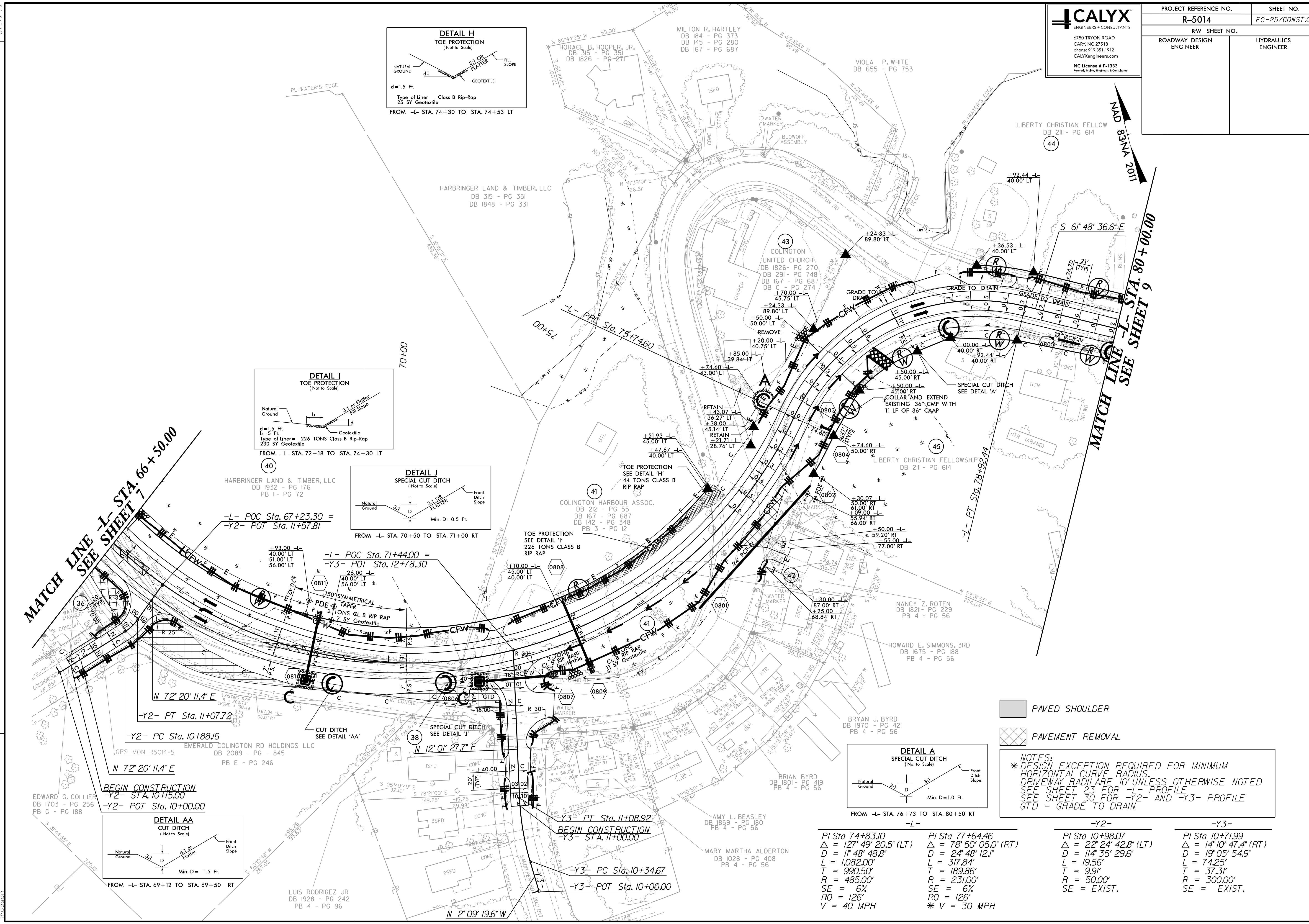


PAVED SHOULDER
PAVEMENT REMOVAL

NOTES:
* DESIGN EXCEPTION REQUIRED FOR MINIMUM HORIZONTAL CURVE RADIUS. DRIVEWAY RADII ARE 10' UNLESS OTHERWISE NOTED. SEE SHEET 23 FOR -L- PROFILE. SEE SHEET 30 FOR -Y2- AND -Y3- PROFILE. GTD = GRADE TO DRAIN

-L-	-Y2-	-Y3-
PI Sta 74+83.10	PI Sta 10+98.07	PI Sta 10+71.99
$\Delta = 127^{\circ} 49' 20.5''$ (LT)	$\Delta = 22^{\circ} 24' 42.8''$ (LT)	$\Delta = 14^{\circ} 10' 47.4''$ (RT)
D = 11' 48' 48.8"	D = 114' 35' 29.6"	D = 19' 05' 54.9"
L = 1,082.00'	L = 317.84'	L = 74.25'
T = 990.50'	T = 189.86'	T = 37.31'
R = 485.00'	R = 231.00'	R = 300.00'
SE = 6%	SE = 6%	SE = EXIST.
RO = 126'	RO = 126'	RO = 126'
V = 40 MPH	* V = 30 MPH	



REVISIONS

8.17.99
 I:\52018\commental\Design\5014_hyd_EC_psh_25.dwg
 1/5/2018