

5/28/19

NV5
 NV5 ENGINEERS & CONSULTANTS, INC.
 6750 TRYON ROAD
 CARY, NC 27518
 P: 919.851.1912 www.nv5.com

PROJECT REFERENCE NO. **R-5014** SHEET NO. **24**

ROADWAY DESIGN ENGINEER 3/31/2021
 HYDRAULICS ENGINEER 4/1/2021

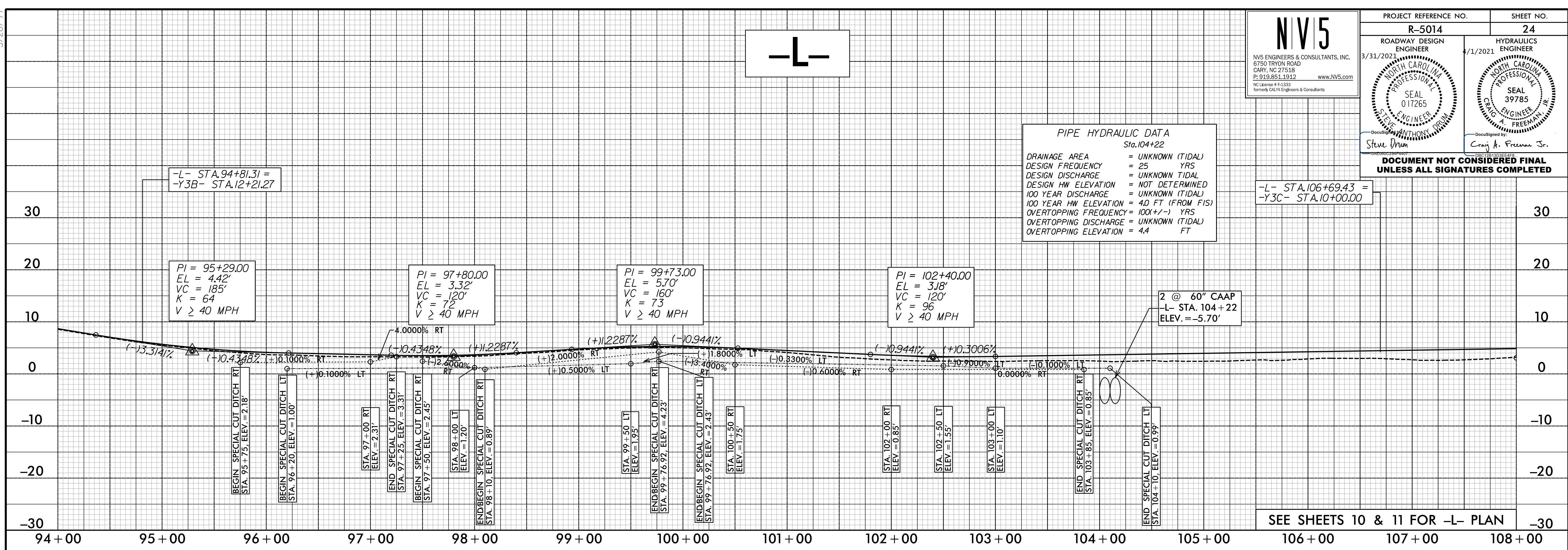
SEAL 017265
 SEAL 39785

DocuSigned by:
 Steve Drum
 DocuSigned by:
 Craig A. Freeman Jr.

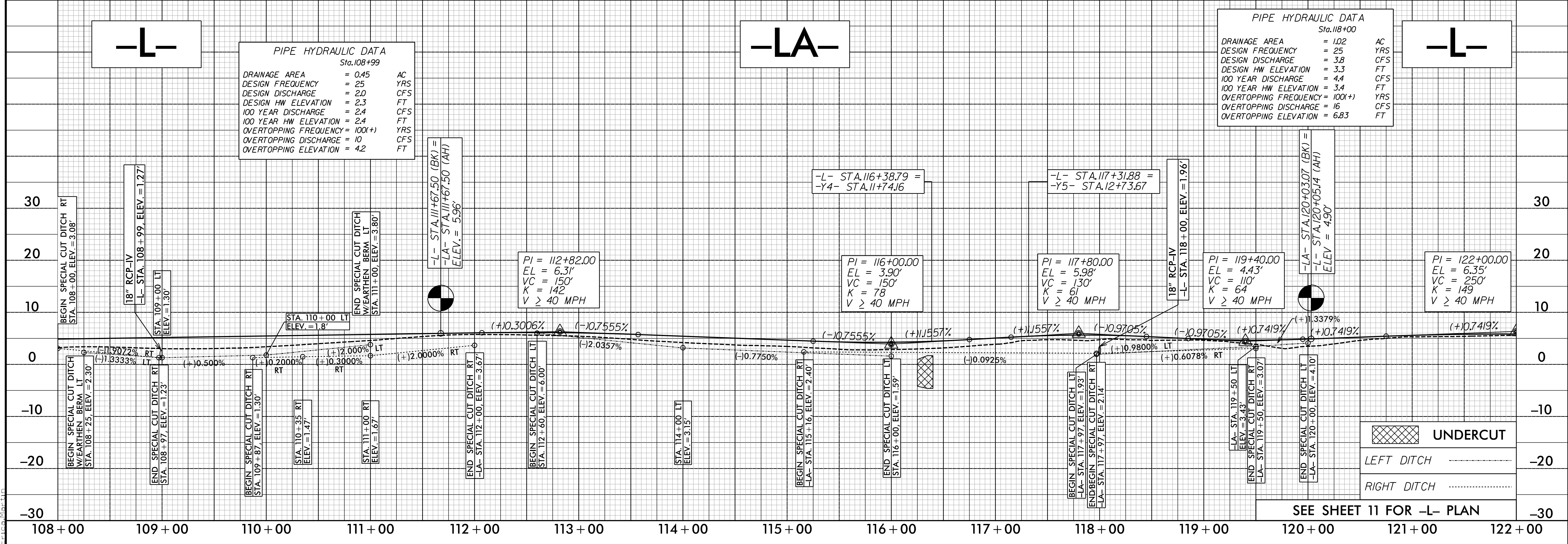
**DOCUMENT NOT CONSIDERED FINAL
 UNLESS ALL SIGNATURES COMPLETED**

PIPE HYDRAULIC DATA
 Sta. 104+22

DRAINAGE AREA	= UNKNOWN (TIDAL)
DESIGN FREQUENCY	= 25 YRS
DESIGN DISCHARGE	= UNKNOWN TIDAL
DESIGN HW ELEVATION	= NOT DETERMINED
100 YEAR DISCHARGE	= UNKNOWN (TIDAL)
100 YEAR HW ELEVATION	= 40 FT (FROM FIS)
OVERTOPPING FREQUENCY	= 100(+/-) YRS
OVERTOPPING DISCHARGE	= UNKNOWN (TIDAL)
OVERTOPPING ELEVATION	= 4.4 FT



SEE SHEETS 10 & 11 FOR -L- PLAN



PIPE HYDRAULIC DATA
 Sta. 118+00

DRAINAGE AREA	= 1.02 AC
DESIGN FREQUENCY	= 25 YRS
DESIGN DISCHARGE	= 3.8 CFS
DESIGN HW ELEVATION	= 3.3 FT
100 YEAR DISCHARGE	= 4.4 CFS
100 YEAR HW ELEVATION	= 3.4 FT
OVERTOPPING FREQUENCY	= 100(+)
OVERTOPPING DISCHARGE	= 16 CFS
OVERTOPPING ELEVATION	= 6.83 FT

UNDERCUT

LEFT DITCH

RIGHT DITCH

SEE SHEET 11 FOR -L- PLAN

3/31/2021
 R:\Projects\5014\Drawings\Profile\124.dgn
 E:\Users\mfranklin\Documents\Profile\124.dgn