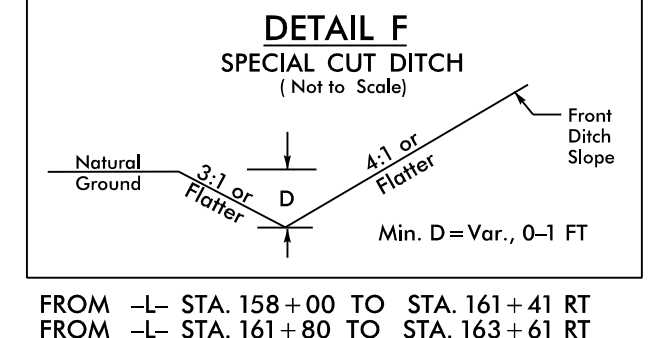
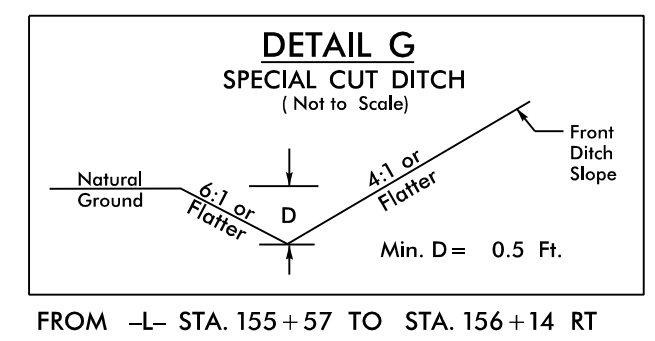
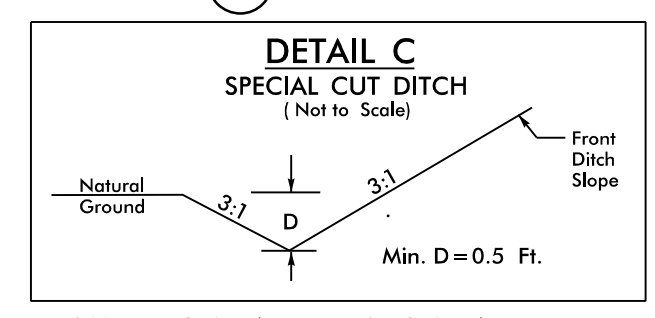
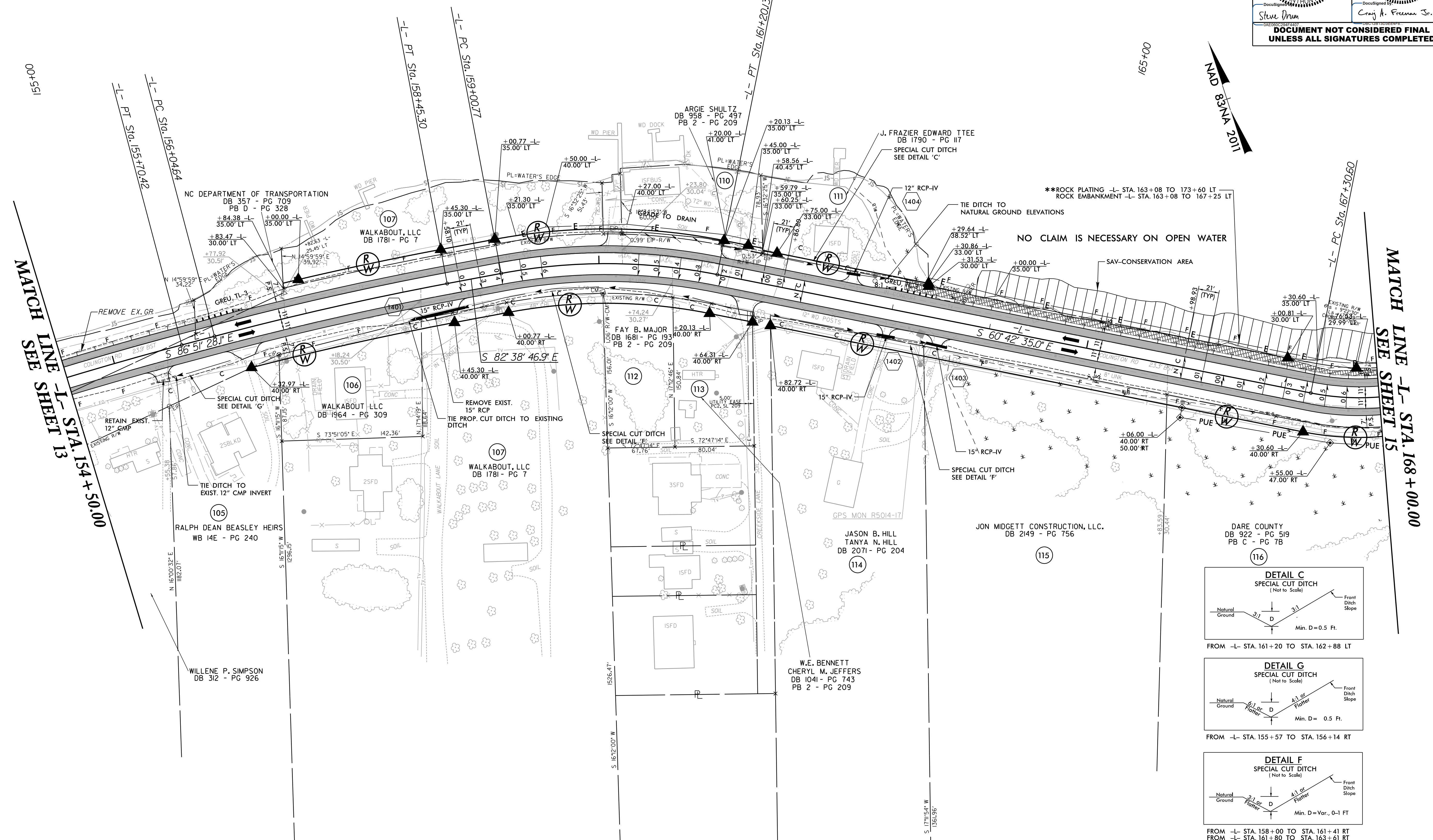


NV5
 NV5 ENGINEERS & CONSULTANTS, INC.
 8750 TRYON ROAD
 CARY, NC 27518
 P: 919.851.1912 www.NV5.com
 NC License # F-1335
 Formerly CALVIN Engineers & Consultants

PROJECT REFERENCE NO. R-5014	SHEET NO. 14
R/W SHEET NO.	
ROADWAY DESIGN 8/31/2021 ENGINEER	HYDRAULICS ENGINEER 4/1/2021
SEAL 017265 STATE ENGINEER STEVE ANTHONY DRUM	SEAL 39785 STATE ENGINEER CRAIG A. FREEMAN JR.

**DOCUMENT NOT CONSIDERED FINAL
UNLESS ALL SIGNATURES COMPLETED**

PI Sta 151+21.17 $\Delta = 14' 36" 20.0" (RT)$ $D = 1' 37" 00.0"$ $L = 903.44'$ $T = 454.18'$ $R = 3,544.07'$ $SE = 2\%$ $RO = 42'$ $V = 80 MPH$	PI Sta 157+25.02 $\Delta = 4' 12" 41.2" (RT)$ $D = 1' 45" 00.0"$ $L = 240.65'$ $T = 120.38'$ $R = 3,274.04'$ $SE = 2\%$ $RO = 42'$ $V = 80 MPH$	PI Sta 160+11.81 $\Delta = 2' 56" 11.8" (RT)$ $D = 10' 00" 00.0"$ $L = 219.37'$ $T = 111.04'$ $R = 572.96'$ $SE = 6\%$ $RO = 126'$ $V = 40 MPH$	PI Sta 168+56.10 $\Delta = 53' 18" 40.2" (LT)$ $D = 22' 55" 05.9"$ $L = 232.61'$ $T = 125.49'$ $R = 250.00'$ $SE = 6\%$ $RO = 126'$ $* V = 30 MPH$
--	---	---	--



- ROCK PLATING / ROCK EMBANKMENT
- PAVED SHOULDER

NOTES:
 * DESIGN EXCEPTION REQUIRED FOR MINIMUM HORIZONTAL CURVE RADIUS AND HORIZONTAL SSD
 ** SEE SHEET 26-I FOR GEOTECHNICAL DETAILS
 DRIVEWAY RADII ARE 10' UNLESS OTHERWISE NOTED
 SEE SHEET 26 FOR -L- PROFILE
 SAV = SUBMERGED AQUATIC VEGETATION

8/17/2021
 C:\Users\pjohn\OneDrive\Documents\Projects\2021\08\014_rdy_psh_14.dgn
 14.dgn
 14.dgn