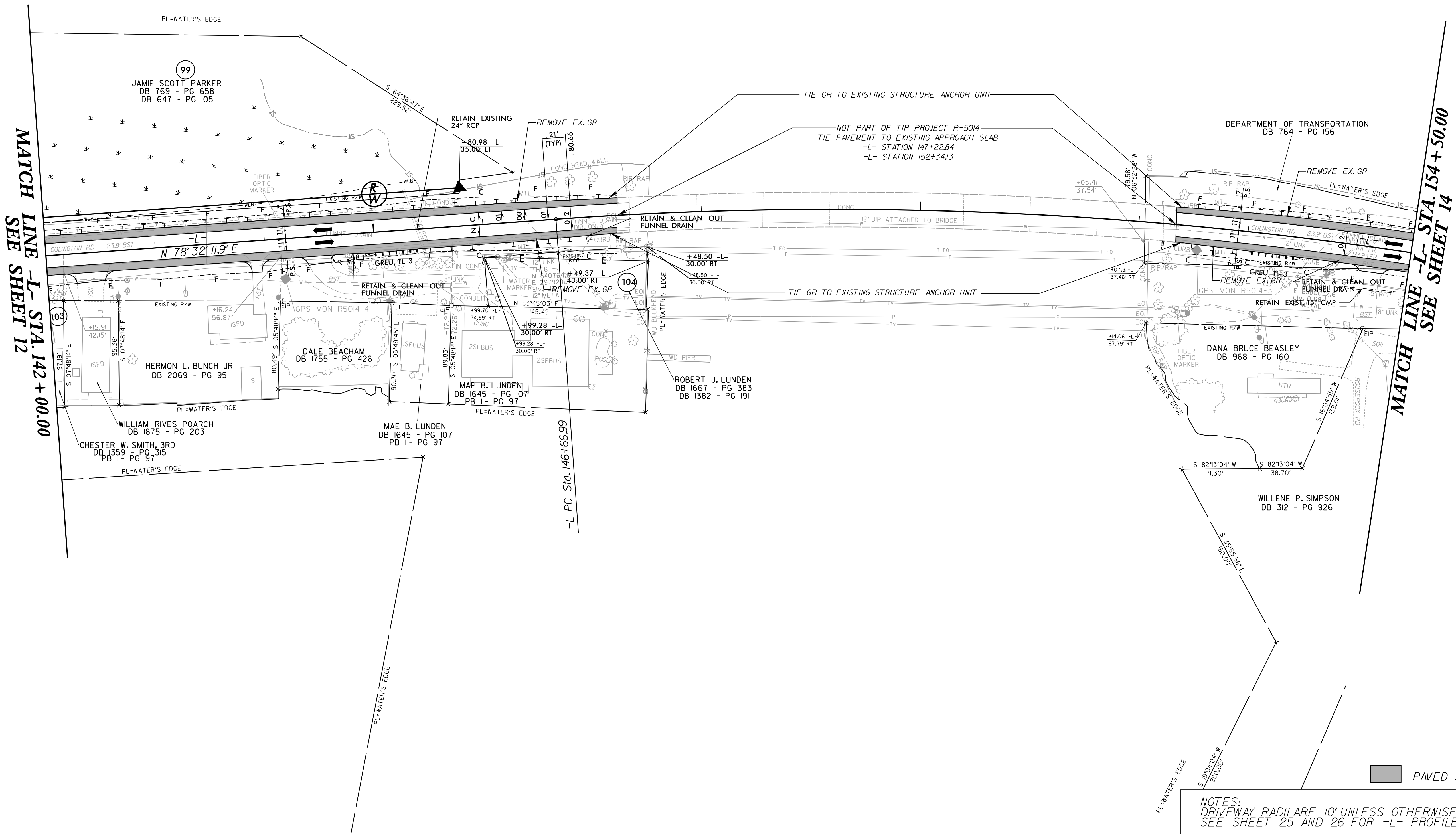




PROJECT REFERENCE NO. R-5014		SHEET NO. 13	
RW SHEET NO.			
ROADWAY DESIGN 1/4/2019 ENGINEER		HYDRAULICS 1/4/2019 ENGINEER	
Designed by: <i>Stephen C. Browde</i>		Designed by: <i>Craig A. Freeman Jr.</i>	
DOCUMENT NOT CONSIDERED FINAL UNLESS ALL SIGNATURES COMPLETED			

-L-
 PI Sta 151+21.17
 $\Delta = 14^{\circ} 36' 20.0''$ (RT)
 $D = 1^{\circ} 37' 00.0''$
 $L = 903.44'$
 $T = 454.18'$
 $R = 3,544.07'$
 $SE = 2\%$
 $RO = 42'$
 $V = 80$ MPH



MATCH LINE -L- STA. 142 + 00.00
SEE SHEET 12

MATCH LINE -L- STA. 154 + 50.00
SEE SHEET 14

NOTES:
 DRIVEWAY RADII ARE 10' UNLESS OTHERWISE NOTED
 SEE SHEET 25 AND 26 FOR -L- PROFILE

8/17/99

12/18/2018
C:\Users\prowd\OneDrive\Projects\13.dgn