

**NV5**  
 NV5 ENGINEERS & CONSULTANTS, INC.  
 8750 TRYON ROAD  
 CARY, NC 27518  
 P: 919.851.1912  
 www.NV5.com  
 NC License # F1333  
 Formerly CALN Engineers & Consultants

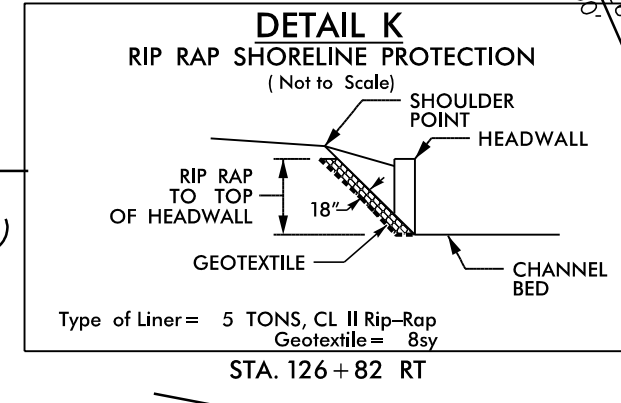
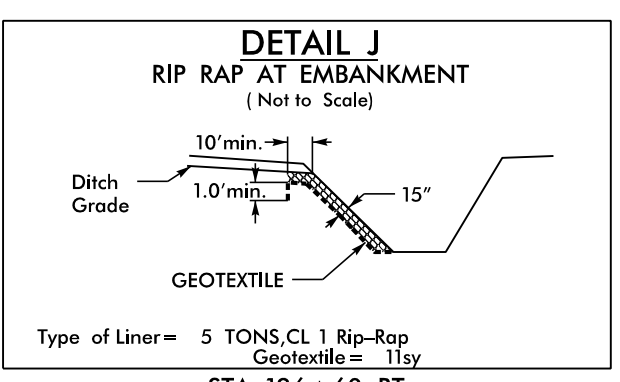
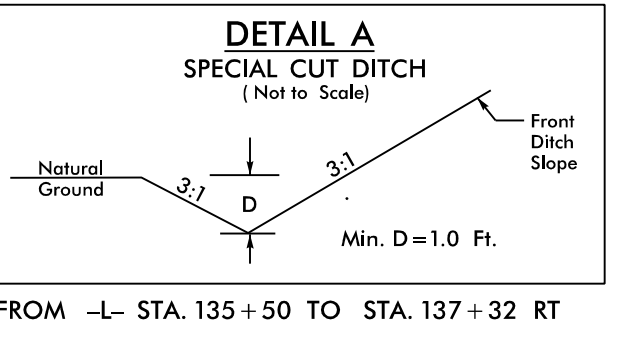
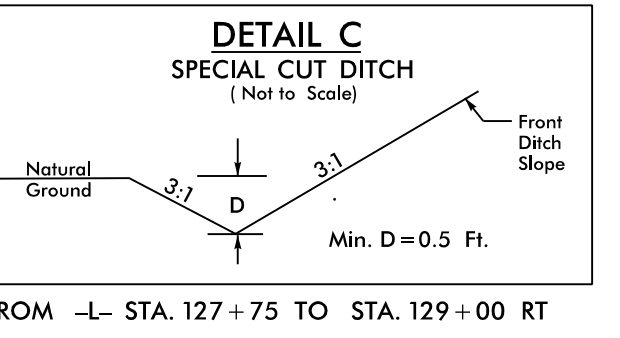
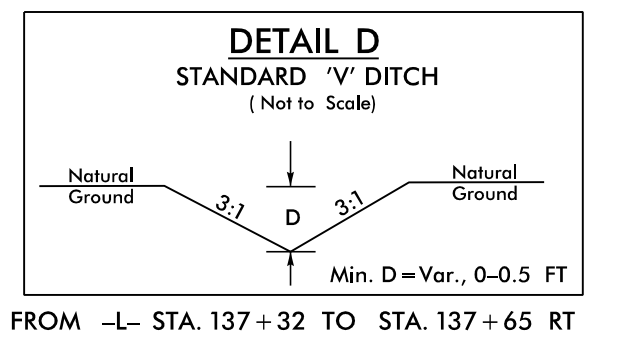
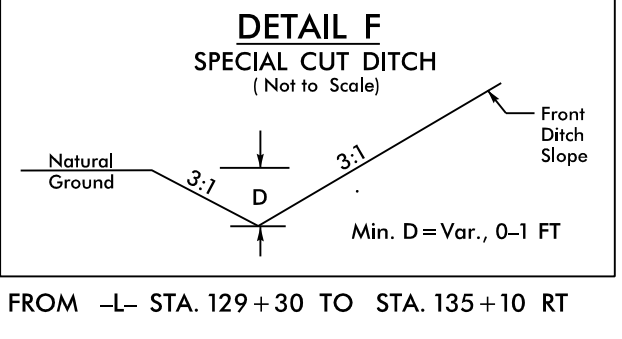
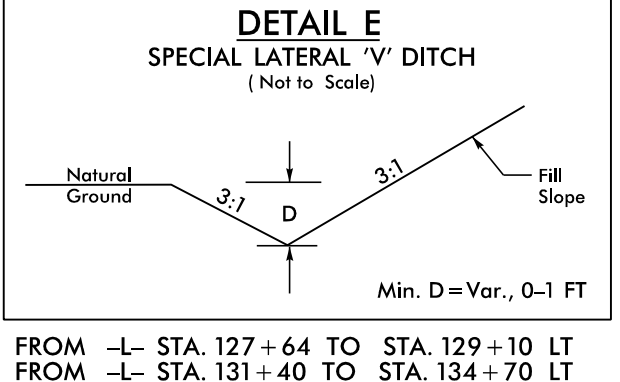
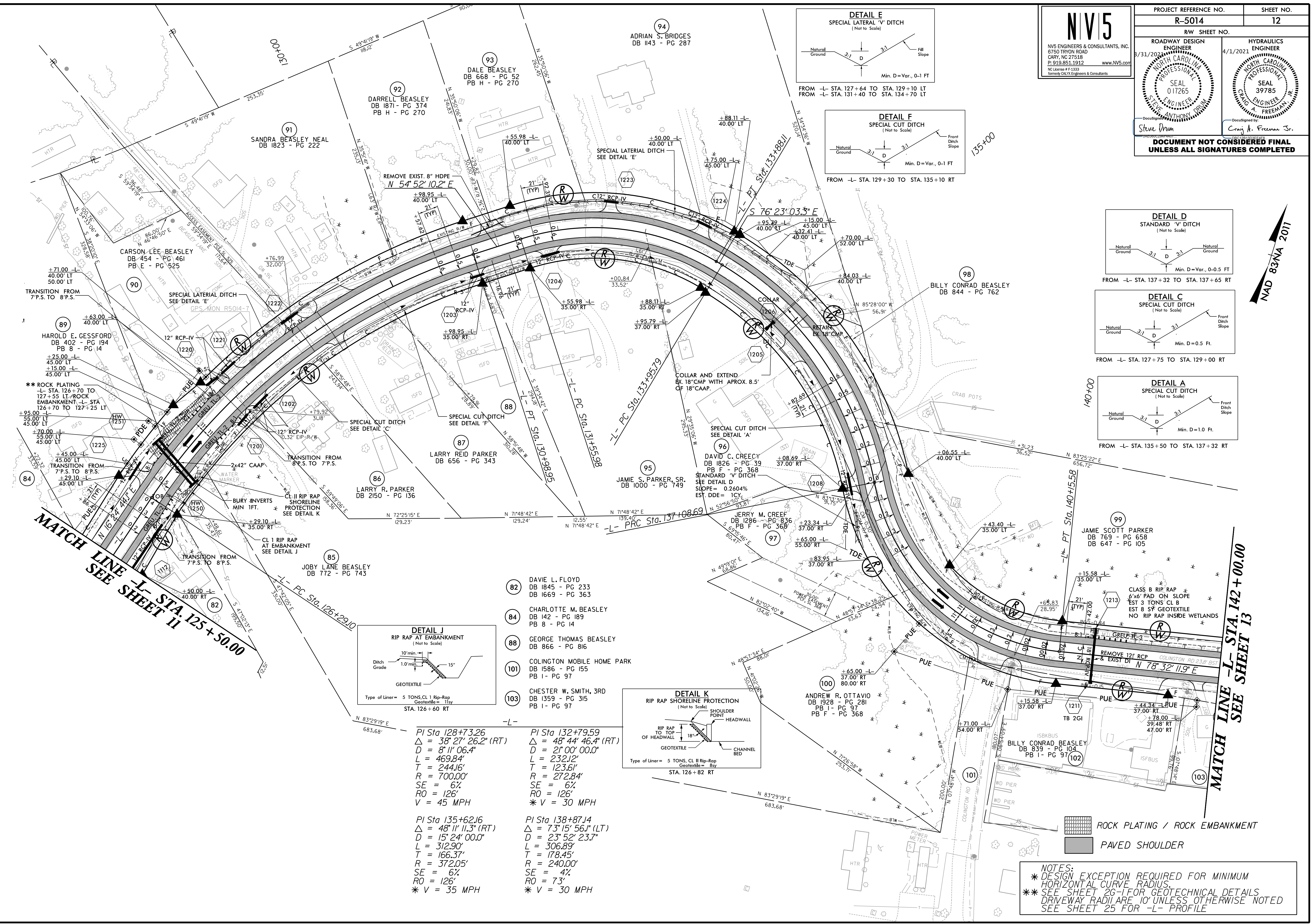
PROJECT REFERENCE NO. **R-5014** SHEET NO. **12**

R/W SHEET NO.

ROADWAY DESIGN ENGINEER  
 8/31/2021  
 NORTH CAROLINA PROFESSIONAL SEAL 017265  
 STEVE DRUM

HYDRAULICS ENGINEER  
 4/1/2021  
 NORTH CAROLINA PROFESSIONAL SEAL 39785  
 CRAIG A. FREEMAN JR.

**DOCUMENT NOT CONSIDERED FINAL  
 UNLESS ALL SIGNATURES COMPLETED**



- 82) DAVE L. FLOYD  
DB 1845 - PG 233  
DB 1669 - PG 363
- 84) CHARLOTTE M. BEASLEY  
DB 142 - PG 189  
PB 8 - PG 14
- 88) GEORGE THOMAS BEASLEY  
DB 866 - PG 816
- 101) COLINGTON MOBILE HOME PARK  
DB 1586 - PG 155  
PB 1 - PG 97
- 103) CHESTER W. SMITH, 3RD  
DB 1359 - PG 315  
PB 1 - PG 97

PI Sta 128+73.26  
 $\Delta = 38^\circ 27' 26.2''$  (RT)  
 D = 8' 11' 06.4"  
 L = 469.84'  
 T = 244.16'  
 R = 700.00'  
 SE = 6'  
 RO = 126'  
 V = 45 MPH

PI Sta 132+79.59  
 $\Delta = 48^\circ 44' 46.4''$  (RT)  
 D = 21' 00' 00.0"  
 L = 232.12'  
 T = 123.61'  
 R = 272.84'  
 SE = 6'  
 RO = 126'  
 \* V = 30 MPH

PI Sta 135+62.16  
 $\Delta = 48^\circ 11' 11.3''$  (RT)  
 D = 15' 24' 00.0"  
 L = 312.90'  
 T = 166.37'  
 R = 372.05'  
 SE = 6'  
 RO = 126'  
 \* V = 35 MPH

PI Sta 138+87.14  
 $\Delta = 73^\circ 15' 56.1''$  (LT)  
 D = 23' 52' 23.7"  
 L = 306.89'  
 T = 178.45'  
 R = 240.00'  
 SE = 4'  
 RO = 73'  
 \* V = 30 MPH

ROCK PLATING / ROCK EMBANKMENT  
 PAVED SHOULDER

**NOTES:**  
 \* DESIGN EXCEPTION REQUIRED FOR MINIMUM HORIZONTAL CURVE RADIUS.  
 \* SEE SHEET 26-1 FOR GEOTECHNICAL DETAILS.  
 \* DRIVEWAY RADII ARE 10' UNLESS OTHERWISE NOTED.  
 \* SEE SHEET 25 FOR -L- PROFILE.

NAD 83/NA 2011

MATCH LINE -L- STA. 142+00.00  
 SEE SHEET 13

MATCH LINE -L- STA. 125+50.00  
 SEE SHEET 11

8/17/19

8/17/2021 10:00 AM Project: R5014\_rdy\_psh\_12.dgn