

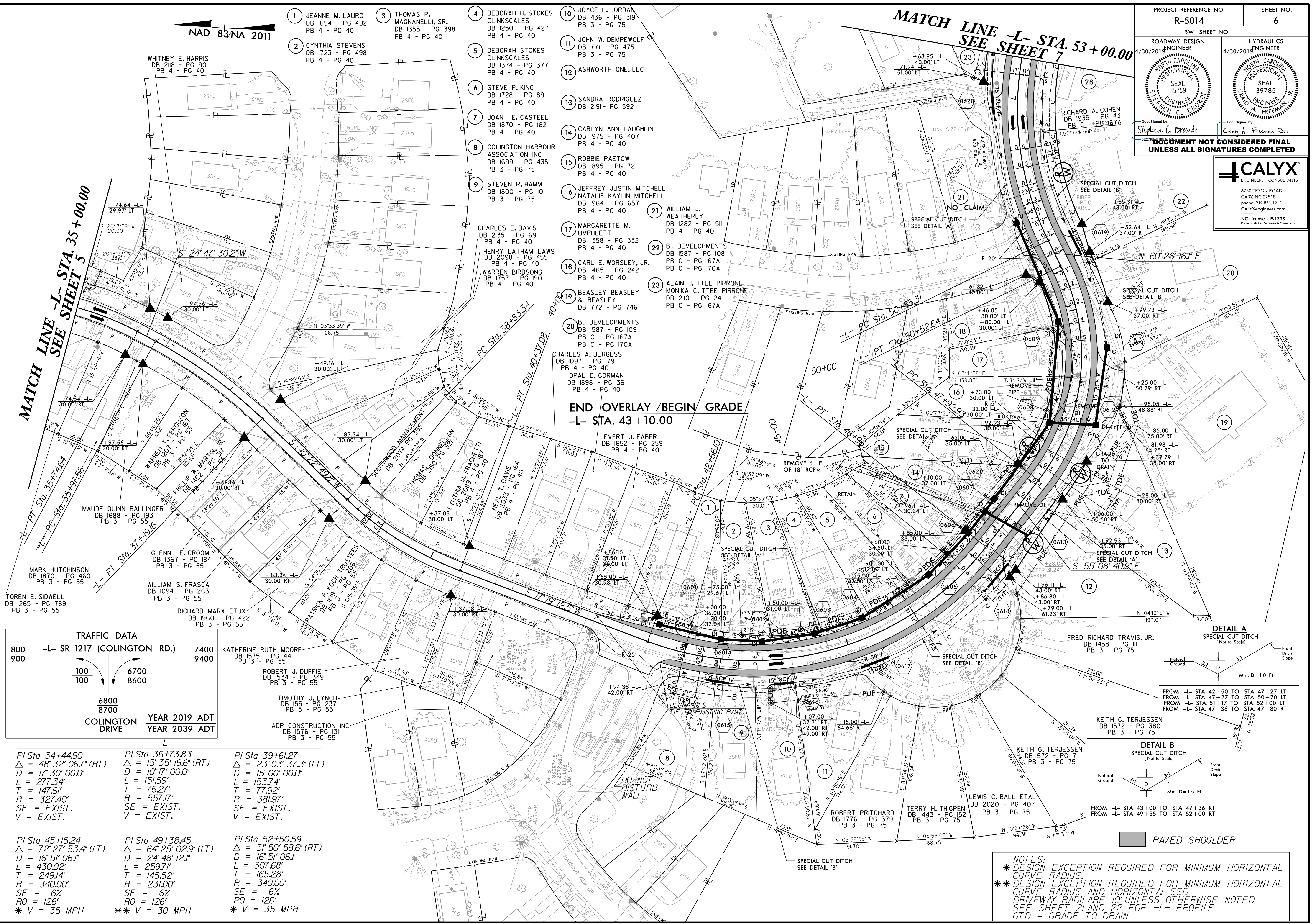
NAD 83NA 2011

PROJECT REFERENCE NO. R-5014	SHEET NO. 6
R/W SHEET NO.	HYDRAULICS ENGINEER
ROADWAY DESIGN ENGINEER 4/30/2019	4/30/2019
DocuSigned by: Stephen C. Browde	DocuSigned by: Craig A. Freeman Jr.

**DOCUMENT NOT CONSIDERED FINAL
UNLESS ALL SIGNATURES COMPLETED**

CALYX
ENGINEERS + CONSULTANTS

4750 TRYON ROAD
CARY, NC 27518
phone: 919.851.1912
CALYXengineers.com
NC License # F-1333
Formerly Huber Engineers & Consultants



MATCH LINE -L- STA. 35+00.00
SEE SHEET 5

MATCH LINE -L- STA. 53+00.00
SEE SHEET 7

END OVERLAY / BEGIN GRADE
-L- STA. 43+10.00

TRAFFIC DATA

800	-L- SR 1217 (COLINGTON RD.)	7400
900		9400

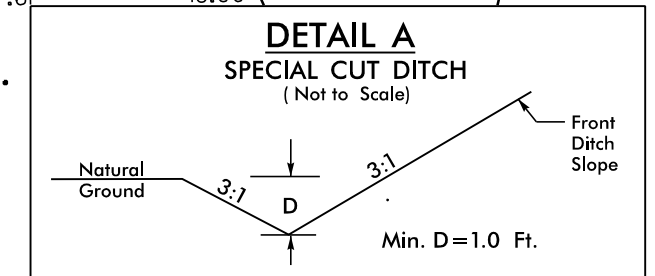
100	6700
100	8600

6800
8700

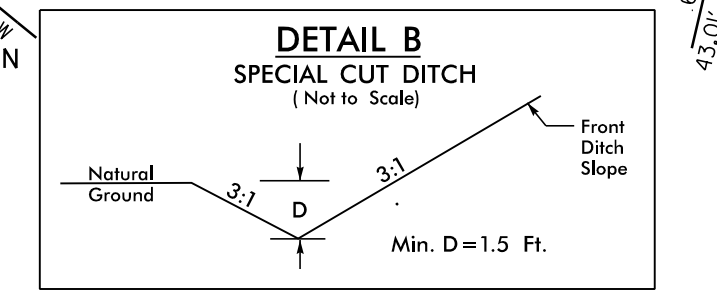
COLINGTON DRIVE

YEAR 2019 ADT	YEAR 2039 ADT

<p>PI Sta 34+44.90 Δ = 48° 32' 06.7" (RT) D = 17' 30" 00.0" L = 277.34' T = 147.61' R = 327.40' SE = EXIST. V = EXIST.</p>	<p>PI Sta 36+73.83 Δ = 15° 35' 19.6" (RT) D = 10' 17" 00.0" L = 151.59' T = 76.27' R = 557.17' SE = EXIST. V = EXIST.</p>	<p>PI Sta 39+61.27 Δ = 23° 03' 37.3" (LT) D = 15' 00" 00.0" L = 153.74' T = 77.92' R = 381.97' SE = EXIST. V = EXIST.</p>
<p>PI Sta 45+15.24 Δ = 72° 27' 53.4" (LT) D = 16' 51" 06.1" L = 430.02' T = 249.14' R = 340.00' SE = 6% RO = 126' * V = 35 MPH</p>	<p>PI Sta 49+38.45 Δ = 64° 25' 02.9" (LT) D = 24' 48' 12.1" L = 259.71' T = 145.52' R = 231.00' SE = 6% RO = 126' * V = 30 MPH</p>	<p>PI Sta 52+50.59 Δ = 51° 50' 58.6" (RT) D = 16' 51" 06.1" L = 307.68' T = 165.28' R = 340.00' SE = 6% RO = 126' * V = 35 MPH</p>



FROM -L- STA. 42+50 TO STA. 47+27 LT
FROM -L- STA. 47+27 TO STA. 50+70 LT
FROM -L- STA. 51+17 TO STA. 52+00 LT
FROM -L- STA. 47+36 TO STA. 47+80 RT



FROM -L- STA. 43+00 TO STA. 47+36 RT
FROM -L- STA. 49+55 TO STA. 52+00 RT

PAVED SHOULDER

NOTES:
* DESIGN EXCEPTION REQUIRED FOR MINIMUM HORIZONTAL CURVE RADIUS.
** DESIGN EXCEPTION REQUIRED FOR MINIMUM HORIZONTAL CURVE RADIUS AND HORIZONTAL SSD.
DRIVEWAY RADII ARE 10' UNLESS OTHERWISE NOTED
SEE SHEET 21 AND 22 FOR -L- PROFILE
GTD = GRADE TO DRAIN