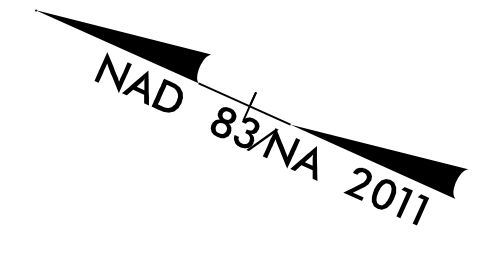


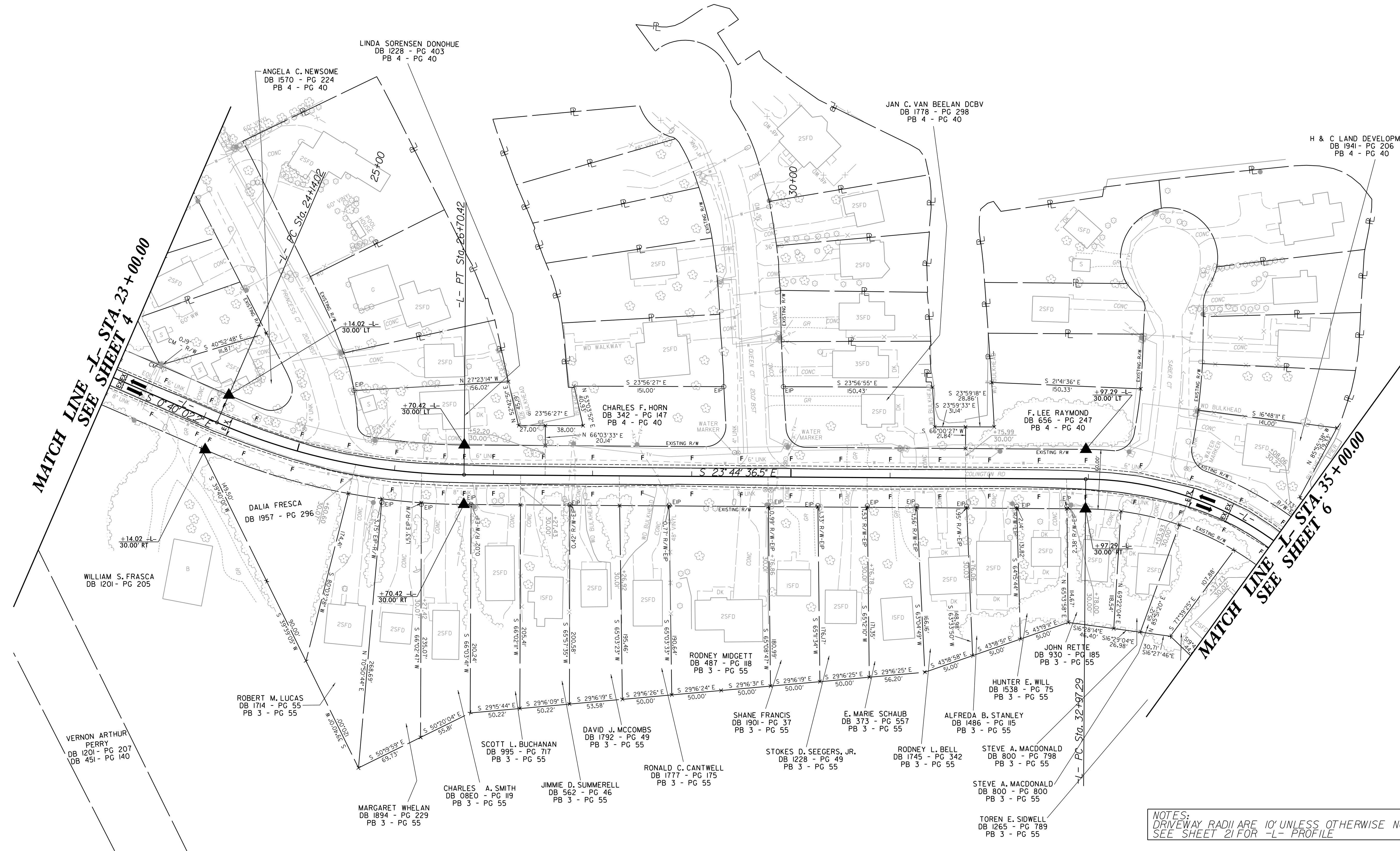
CALYX
ENGINEERS - CONSULTANTS
6750 TRYON ROAD
CARY, NC 27518
phone: 919.851.1912
CALYXEngineers.com
NC License # F-1333
Formerly Maky Engineers & Consultants

PROJECT REFERENCE NO. R-5014		SHEET NO. 5	
R/W SHEET NO.			
ROADWAY DESIGN ENGINEER 1/4/2019		HYDRAULICS ENGINEER 1/4/2019	
DocuSigned by: <i>Stephen C. Browde</i>		DocuSigned by: <i>Craig A. Freeman Jr.</i>	
DOCUMENT NOT CONSIDERED FINAL UNLESS ALL SIGNATURES COMPLETED			



-L-

PI Sta 25+43.98 $\Delta = 23^{\circ}04'34.3"$ (LT) D = 9'00'00.0" L = 256.40' T = 129.96' R = 636.62' SE = EXIST. V = EXIST.	PI Sta 34+44.90 $\Delta = 48^{\circ}32'06.7"$ (RT) D = 17'30'00.0" L = 277.34' T = 147.61' R = 327.40' SE = EXIST. V = EXIST.
---	--



MATCH LINE -L- STA. 23+00.00
SEE SHEET 4

MATCH LINE -L- STA. 35+00.00
SEE SHEET 6

NOTES:
DRIVEWAY RADII ARE 10' UNLESS OTHERWISE NOTED
SEE SHEET 21 FOR -L- PROFILE

8/17/09
12/28/2018
C:\pwworking\CALYX\Projects\195014_rdy_psh_05.dgn
enr.dwg