

8/17/19

PAVEMENT SCHEDULE

(FINAL PAVEMENT DESIGN)

JANUARY 4, 2019

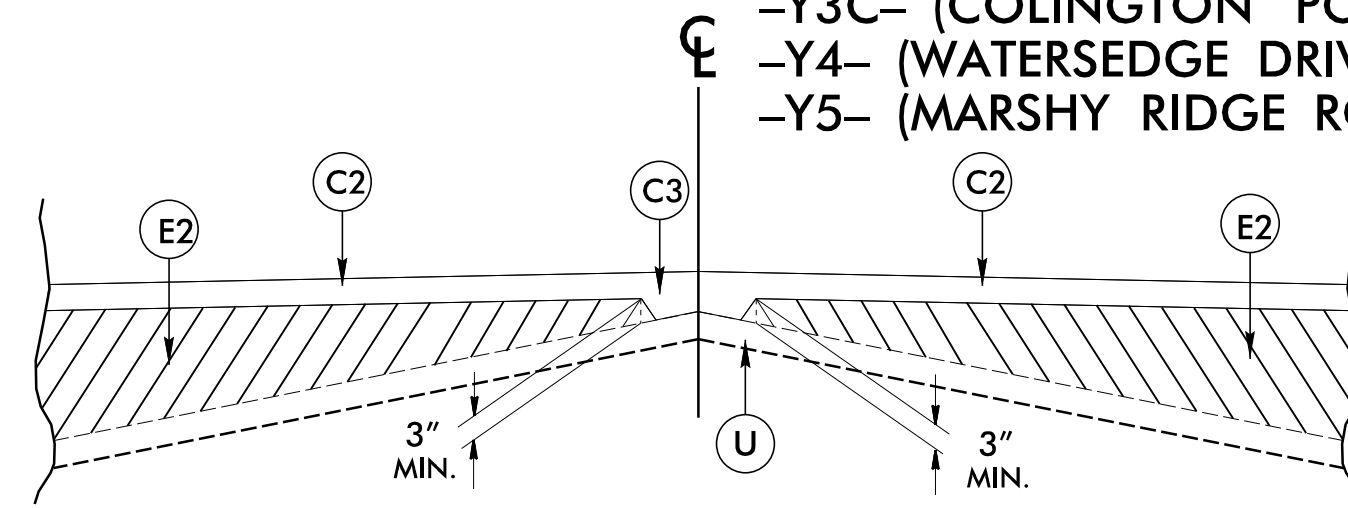
C1	PROP. APPROX. 3.0" ASPHALT CONCRETE SURFACE COURSE TYPE S9.5B, AT AN AVERAGE RATE OF 165 LBS. PER SQ. YD. IN EACH OF TWO LAYERS.
C2	PROP. APPROX. 1.5" ASPHALT CONCRETE SURFACE COURSE TYPE S9.5B, AT AN AVERAGE RATE OF 165 LBS. PER SQ. YD.
C3	PROP. VAR. DEPTH ASPHALT CONCRETE SURFACE COURSE TYPE S9.5B, AT AN AVERAGE RATE OF 110 LBS. PER SQ. YD. PER 1" DEPTH TO BE PLACED IN LAYERS NOT LESS THAN 1.5" OR GREATER THAN 2" DEPTH.
C4	PROP. APPROX. 2.5" ASPHALT CONCRETE SURFACE COURSE TYPE S9.5B, AT AN AVERAGE RATE OF 137.5 LBS. PER SQ. YD. IN EACH OF TWO LAYERS.
D1	PROP. APPROX. 2.5" ASPHALT CONCRETE INTERMEDIATE COURSE, TYPE I19.0C, AT AN AVERAGE RATE OF 285 LBS. PER SQ. YD.
D2	PROP. VAR. DEPTH ASPHALT CONCRETE INTERMEDIATE COURSE TYPE I19.0C, AT AN AVERAGE RATE OF 114 LBS. PER SQ. YD. PER 1" DEPTH TO BE PLACED IN LAYERS NOT LESS THAN 2.5" OR GREATER THAN 4" DEPTH.
E1	PROP. APPROX. 4" ASPHALT CONCRETE BASE COURSE TYPE B25.0C, AT AN AVERAGE RATE OF 456 LBS. PER SQ. YD.
E2	PROP. VAR. DEPTH ASPHALT CONCRETE BASE COURSE TYPE B25.0C, AT AN AVERAGE RATE OF 114 LBS. PER SQ. YD. PER 1" IN DEPTH TO BE PLACED IN LAYERS NOT GREATER THAN 5.5" IN DEPTH OR LESS THAN 3"
R1	5" MONOLITHIC ISLAND (KEYED IN)
R2	2'-6" CURB & GUTTER
T	EARTH MATERIAL
U	EXISTING PAVEMENT
V	VARIABLE DEPTH MILLING - 0" TO 3"
W	VARIABLE DEPTH ASPHALT PAVEMENT (SEE WEDGING DETAIL)

NOTE: PAVEMENT EDGE SLOPES ARE 1:1 UNLESS SHOWN OTHERWISE.

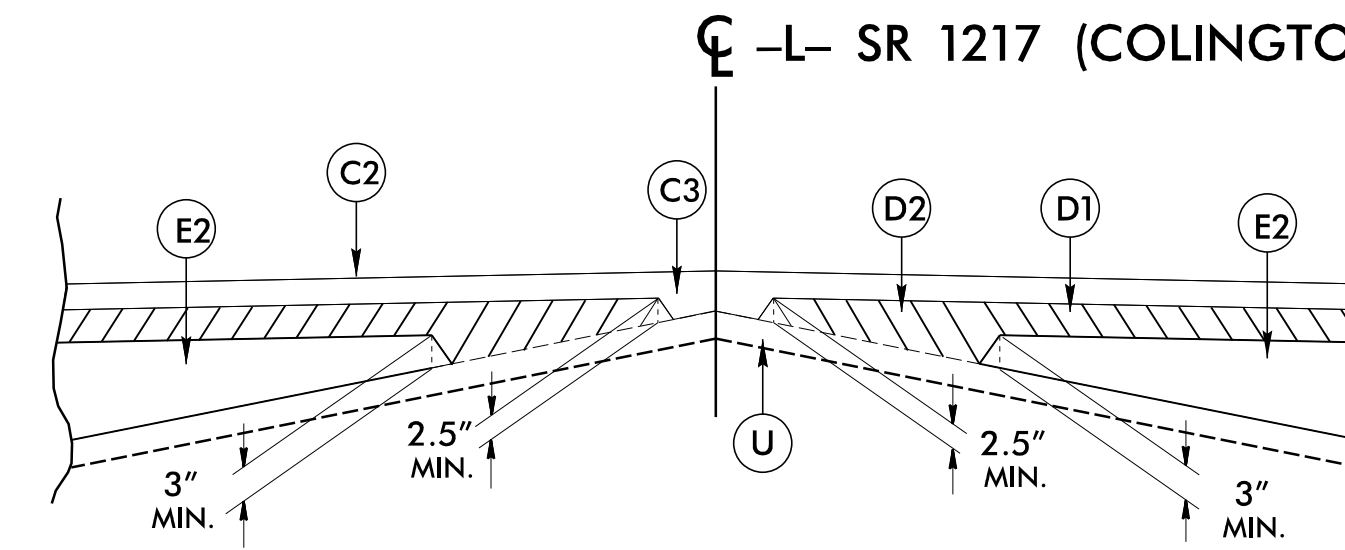


PROJECT REFERENCE NO. R-5014	SHEET NO. 2A-1
RW SHEET NO.	PAVEMENT DESIGN
ROADWAY DESIGN 1/8/2019 ENGINEER	PAVEMENT DESIGN 1/8/2019 ENGINEER
DocuSigned by: <i>Stephen C. Brown</i>	DocuSigned by: <i>Clark Morrison</i>
DOCUMENT NOT CONSIDERED FINAL UNLESS ALL SIGNATURES COMPLETED	

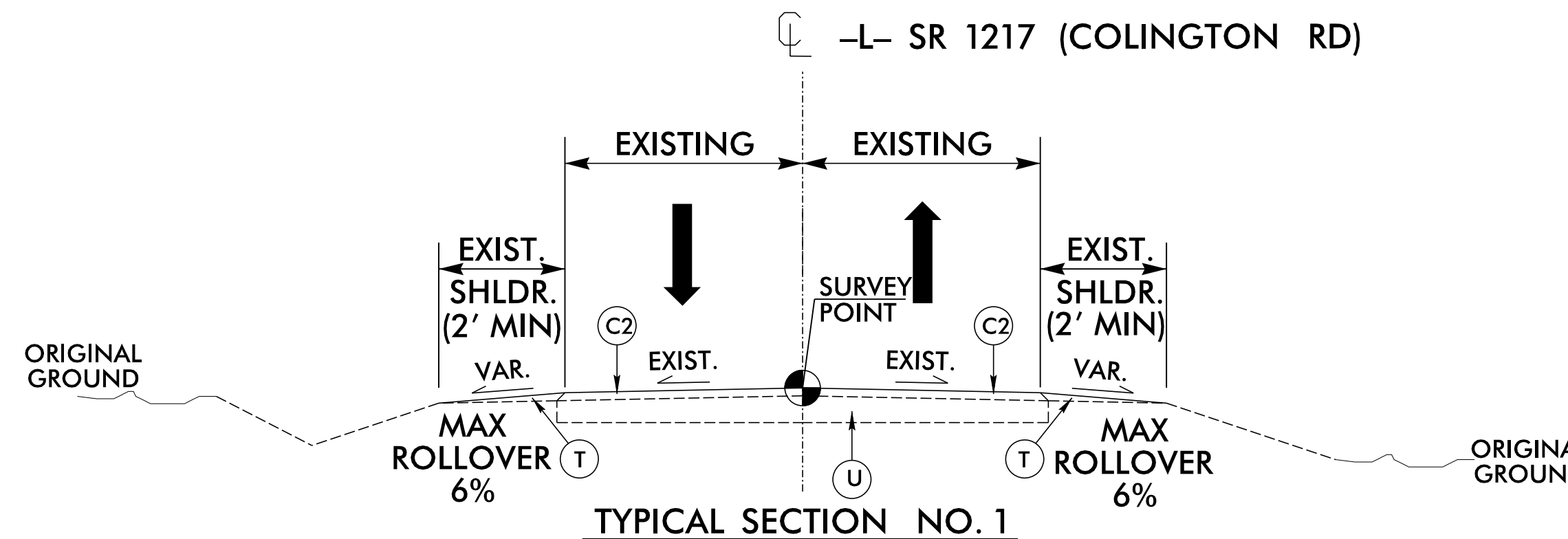
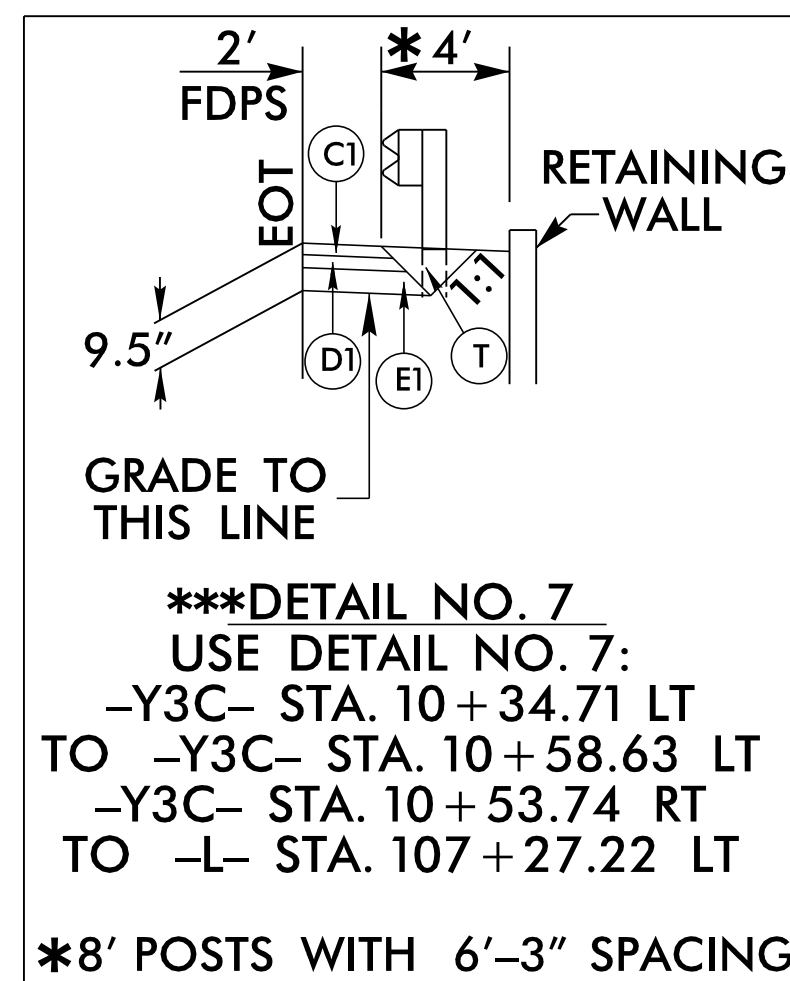
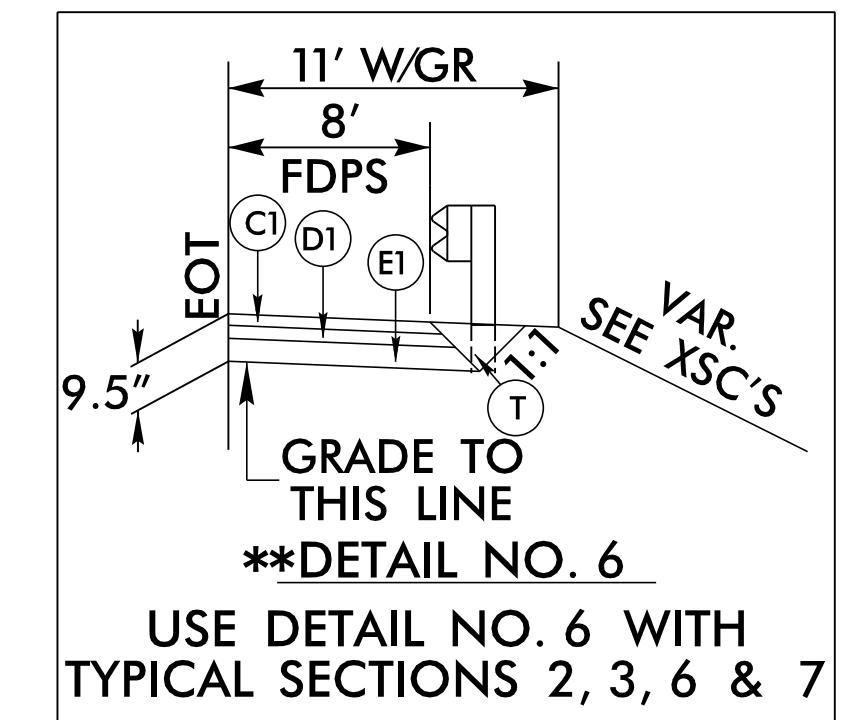
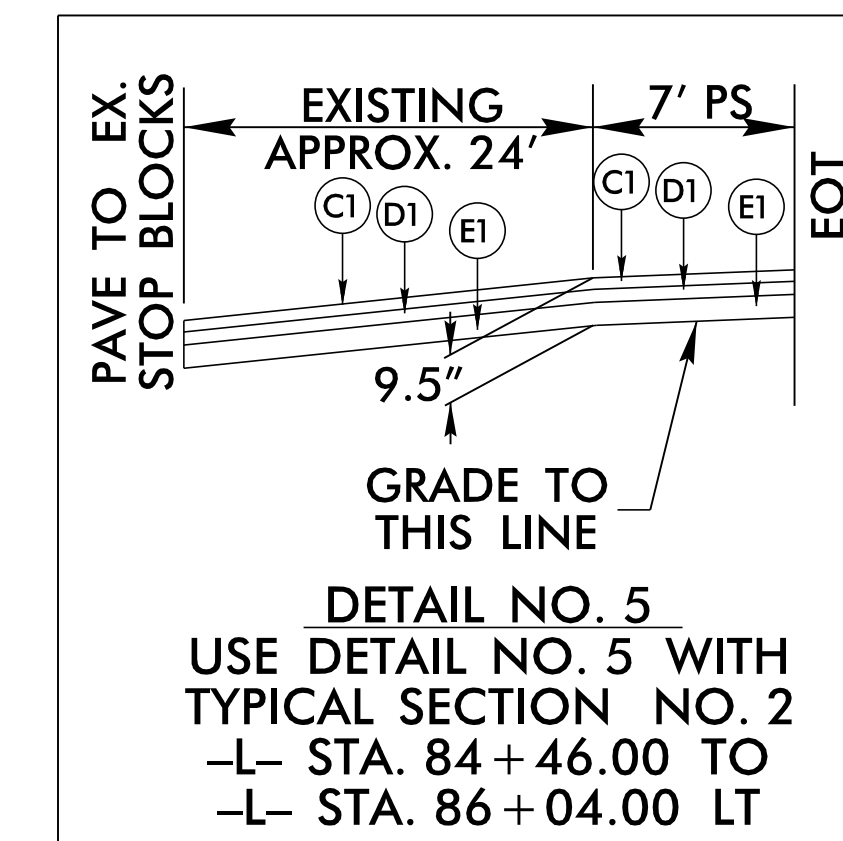
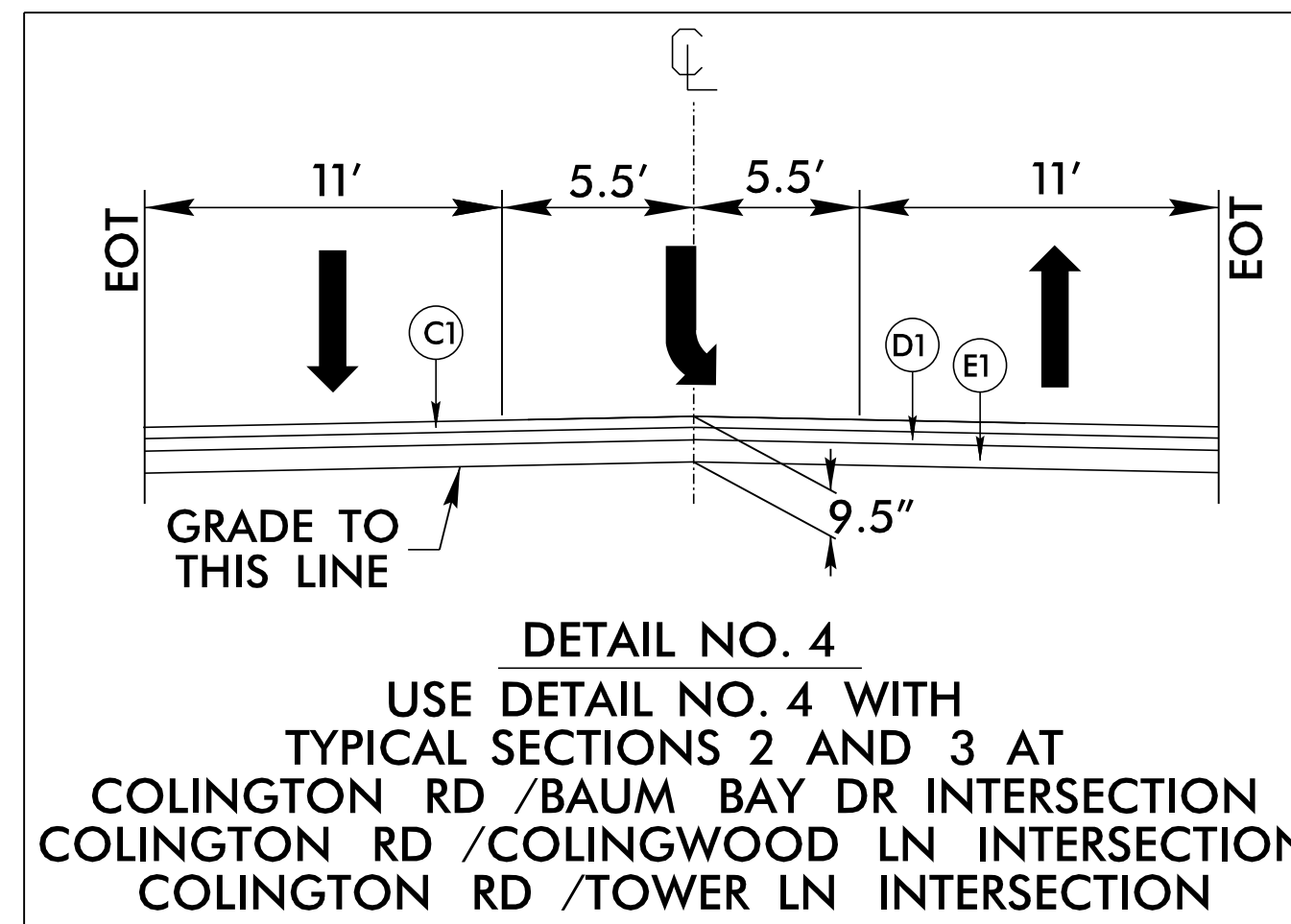
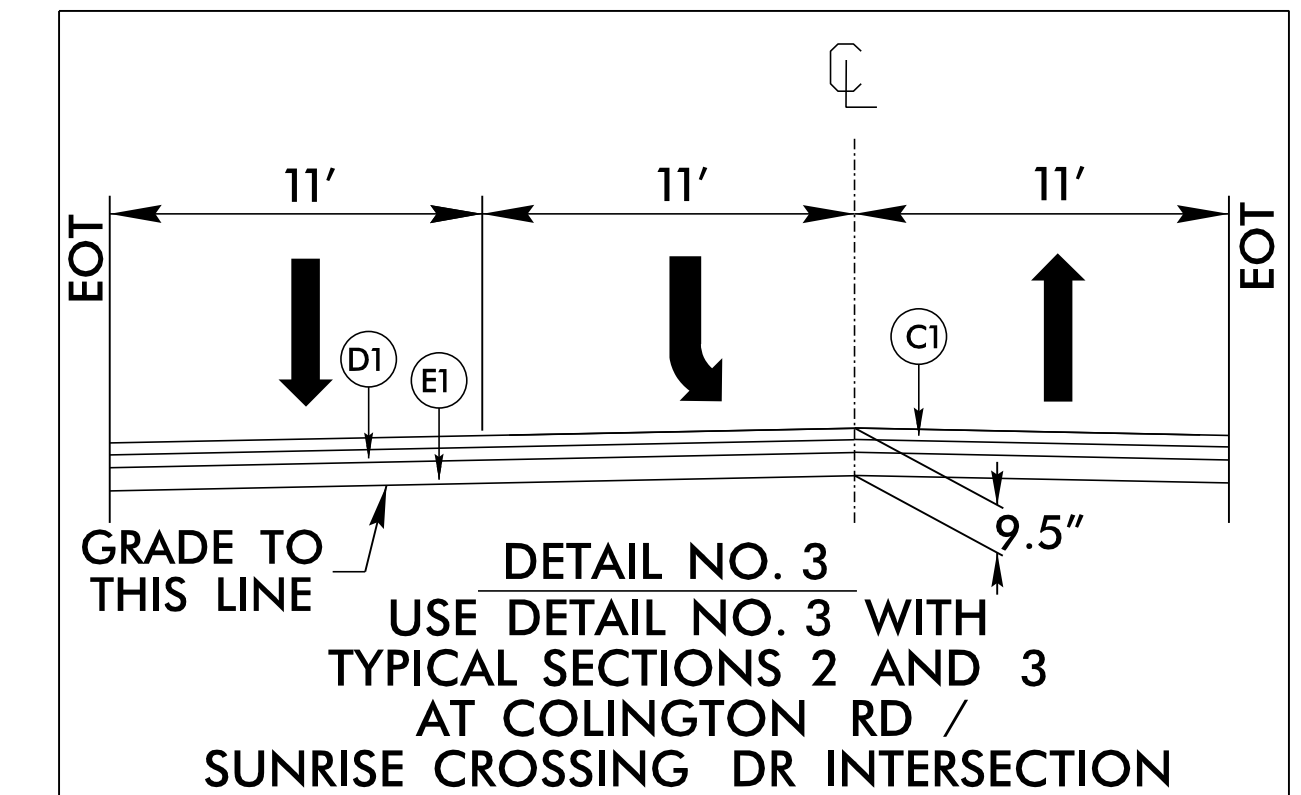
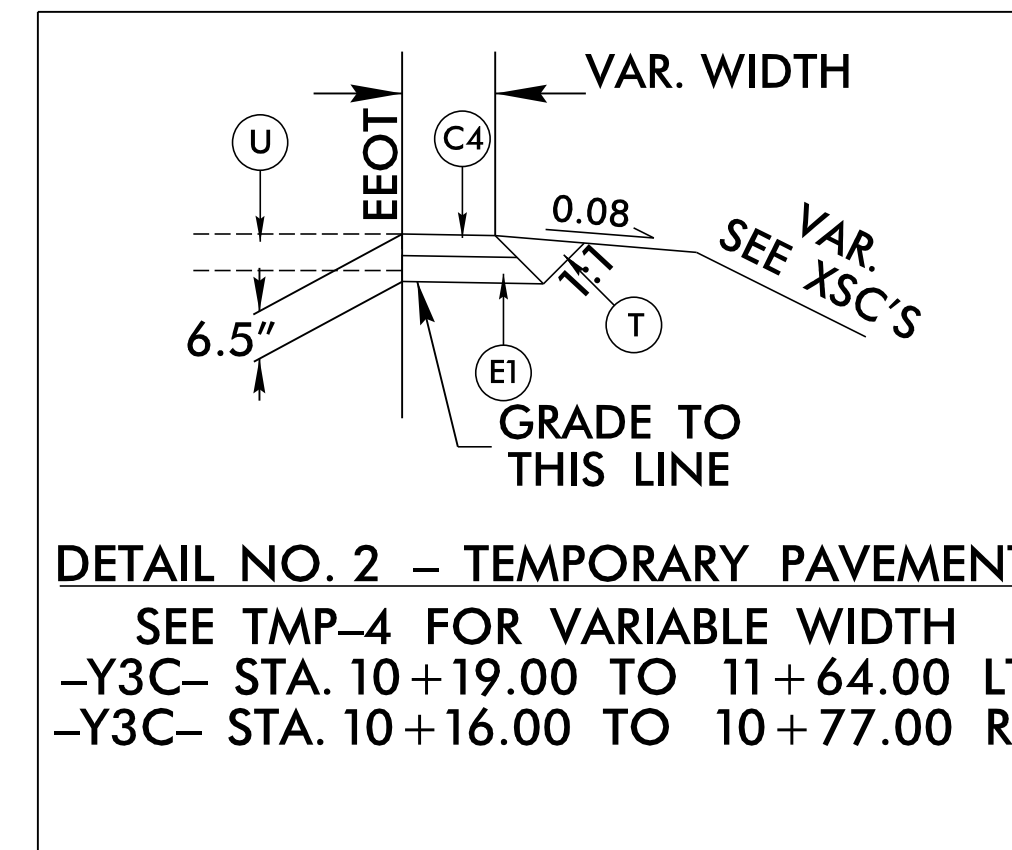
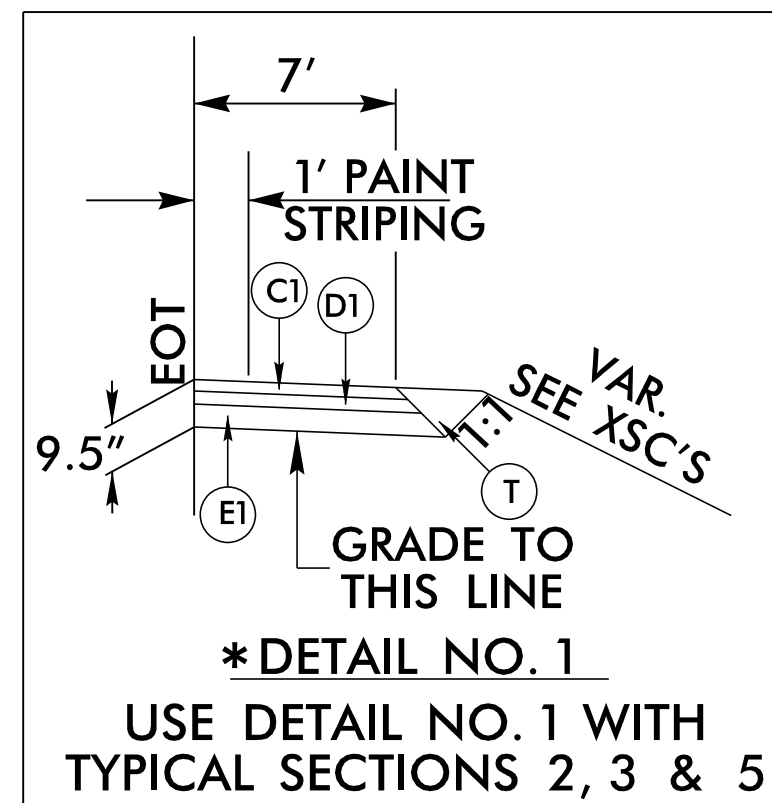
- Y1- (TOWER LANE)
- Y2- (COLINGWOOD LANE)
- Y3- (SANDPIPER DRIVE)
- Y3A- SR 1219 (SCHOOL HOUSE ROAD)
- Y3B- (SUNRISE CROSSING DRIVE)
- Y3C- (COLINGTON POINT)
- Y4- (WATERSEdge DRIVE)
- Y5- (MARSHY RIDGE ROAD)



Detail Showing Method of Wedging



Detail Showing Method of Wedging



USE TYPICAL SECTION NO. 1
-L- STA. 11+00.00 TO -L- STA. 43+10.00
-L- STA. 209+96.72 TO -L- STA. 229+00.00

NOTE:
TRANSITION FROM TYP. 1 TO TYP. 2
-L- STA. 41+98.74 TO 43+10.00.
TRANSITION FROM 2 TO 3 LANES.
TRANSITION FROM TYP. 2 TO TYP. 1
-L- STA. 182+12.50 TO 183+00.00.

REVISIONS

1/8/2019 R:\Roadway\Proj\RF5014_Rdy_typ.dgn