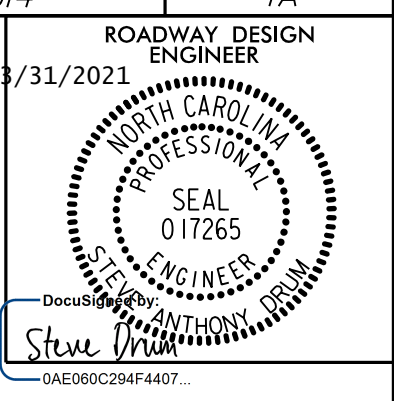


STATE OF NORTH CAROLINA DIVISION OF HIGHWAYS



INDEX OF SHEETS

SHEET NUMBER	SHEET
1	TITLE SHEET
1A	INDEX OF SHEETS, GENERAL NOTES, LIST OF STANDARD DRAWINGS
1B	CONVENTIONAL SYMBOLS
1C-1 THRU 1C-4	SURVEY CONTROL SHEETS
2A-1 THRU 2A-4	PAVEMENT SCHEDULE & TYPICAL SECTIONS
2B-1	INTERSECTION DETAIL
2C-1	TYPE III SHOP CURVED STRUCTURE ANCHOR UNIT DETAIL
2C-2	SPECIAL MINIMUM DEPTH DROP INLET DETAIL
2C-3	MINIMUM DEPTH CONCRETE CATCH BASIN DETAIL
2C-4	GUARDRAIL INSTALLATION DETAIL - W BEAM RAIL SECTION
2C-5	GUARDRAIL PLACEMENT - CLEAR SPAN
2C-6	A.T.-1 SYSTEM GUARDRAIL ANCHOR UNIT DETAIL
2C-7	COAL COMBUSTION PRODUCT PLACEMENT DETAIL
2G-1 THRU 2G-3	GEOTECHNICAL DETAILS
3B-1 THRU 3B-2	SUMMARY OF EARTHWORK AND ROADWAY SUMMARIES
3D-1 THRU 3D-6	DRAINAGE SUMMARIES
3G-1	GEOTECHNICAL SUMMARY TABLES
3P-1 THRU 3P-2	PARCEL INDEX SHEET
4 THRU 20	PLAN SHEETS
21 THRU 31	PROFILE SHEETS
TMP-1 THRU TMP-5	TRANSPORTATION MANAGEMENT PLANS
PMP-1 THRU PMP-19	PAVEMENT MARKING PLANS
EC-01 THRU EC-37/CONST.20	EROSION CONTROL PLANS
SIGN-1 THRU SIGN-19	SIGNING PLANS
SIG-1 THRU SIG-M8	SIGNAL PLANS
UC-1 THRU UC-22	UTILITY CONSTRUCTION PLANS
UO-1 THRU UO-13	UTILITIES BY OTHERS PLANS
X-0	CROSS-SECTION INDEX
X-0A THRU X-0B	CROSS-SECTION SUMMARY
X-1 THRU X-112	CROSS-SECTIONS

LIST OF STANDARD DRAWINGS

GENERAL NOTES:	2018 SPECIFICATIONS EFFECTIVE: 01-16-2018 REVISED:
GRADING AND SURFACING OR RESURFACING AND WIDENING:	THE GRADE LINES SHOWN DENOTE THE FINISHED ELEVATION OF THE PROPOSED SURFACING AT GRADE POINTS SHOWN ON THE TYPICAL SECTIONS. WHERE NO GRADE LINES ARE SHOWN, THE PROFILES SHOWN DENOTE THE TOP ELEVATION OF THE EXISTING PAVEMENT ALONG THE CENTER LINE OF SURVEY ON WHICH THE PROPOSED RESURFACING WILL BE PLACED. GRADE LINES MAY BE ADJUSTED BY THE ENGINEER IN ORDER TO SECURE A PROPER TIE-IN.
CLEARING:	CLEARING ON THIS PROJECT SHALL BE PERFORMED TO THE LIMITS ESTABLISHED BY METHOD 11.
SUPERELEVATION:	ALL CURVES ON THIS PROJECT SHALL BE SUPERELEVATED IN ACCORDANCE WITH STD. NO. 225.04 USING THE RATE OF SUPERELEVATION AND RUNOFF SHOWN ON THE PLANS. SUPERELEVATION IS TO BE REVOLVED ABOUT THE GRADE POINTS SHOWN ON THE TYPICAL SECTIONS.
SHOULDER CONSTRUCTION:	ASPHALT, EARTH, AND CONCRETE SHOULDER CONSTRUCTION ON THE HIGH SIDE OF SUPERELEVATED CURVES SHALL BE IN ACCORDANCE WITH STD. NO. 560.02
SIDE ROADS:	THE CONTRACTOR WILL BE REQUIRED TO DO ALL NECESSARY WORK TO PROVIDE SUITABLE CONNECTIONS WITH ALL ROADS, STREETS, AND DRIVES ENTERING THIS PROJECT. THIS WORK WILL BE PAID FOR AT THE CONTRACT UNIT PRICE FOR THE PARTICULAR ITEMS INVOLVED.
SUBSURFACE DRAINS:	SUBSURFACE DRAINS SHALL BE CONSTRUCTED IN ACCORDANCE WITH STD. NO. 815.02 AT LOCATIONS DIRECTED BY THE ENGINEER.
DRIVEWAYS:	DRIVEWAYS SHALL BE CONSTRUCTED IN ACCORDANCE WITH STD. 848.02 USING 3 FOOT RADIUS OR RADIUS AS SHOWN ON THE PLANS. LOCATIONS OF DRIVES WILL BE AS SHOWN ON THE PLANS OR AS DIRECTED BY THE ENGINEER.
STREET TURNOUT:	STREET RETURNS SHALL BE CONSTRUCTED IN ACCORDANCE WITH STD. NO. 848.04 USING THE RADIUS NOTED ON PLANS.
GUARDRAIL:	THE GUARDRAIL LOCATIONS SHOWN ON THE PLANS MAY BE ADJUSTED DURING CONSTRUCTION AS DIRECTED BY THE ENGINEER. THE CONTRACTOR SHOULD CONSULT WITH THE ENGINEER PRIOR TO ORDERING GUARDRAIL MATERIAL.
TEMPORARY SHORING:	SHORING REQUIRED FOR THE MAINTENANCE OF TRAFFIC WILL BE PAID FOR AS "EXTRA WORK" IN ACCORDANCE WITH SECTION 104-7.
UTILITIES:	UTILITY OWNERS ON THIS PROJECT ARE DARE COUNTY WATER DEPARTMENT, DOMINION POWER, CENTURYLINK, SPECTRUM, DUKE ENERGY, PIEDMONT NATURAL GAS, KDHWWTP, AND KILL DEVIL HILLS.
RIGHT-OF-WAY MARKERS:	ANY RELOCATION OF EXISTING UTILITIES WILL BE ACCOMPLISHED BY OTHERS, EXCEPT AS SHOWN ON THE PLANS.
CURB RAMPS	ALL RIGHT-OF-WAY MARKERS ON THIS PROJECT SHALL BE PLACED BY OTHERS.
	CURB RAMPS ARE SHOWN ON THE PLANS AT APPROXIMATE LOCATIONS. CONSTRUCT ALL CURB RAMPS ACCORDANCE WITH STD 848.05 and/or 848.06.

STANDARD SPECIFICATIONS

STD. NO.	TITLE
DIVISION 2 - EARTHWORK	
200.02	Method of Clearing - Method II
225.02	Guide for Grading Subgrade - Secondary and Local
225.04	Method of Obtaining Superelevation - Two Lane Pavement
225.06	Method of Grading Sight Distance at Intersections
275.01	Rock Plating
DIVISION 3 - PIPE CULVERTS	
300.01	Method of Pipe Installation
310.10	Driveway Pipe Construction
DIVISION 5 - SUBGRADE, BASES AND SHOULDERS	
560.02	Method of Shoulder Construction - High Side of Superelevated Curve - Method II
DIVISION 6 - ASPHALT BASES AND PAVEMENTS	
654.01 PAVEMENT REPAIRS	
DIVISION 8 - INCIDENTALS	
815.02	Subsurface Drain
840.00	Concrete Base Pad for Drainage Structures
840.01	Brick Catch Basin - 12" thru 54" Pipe
840.02	Concrete Catch Basin - 12" thru 54" Pipe
840.03	Frame, Grates and Hood - for Use on Standard Catch Basin
840.14	Concrete Drop Inlet - 12" thru 30" Pipe
840.15	Brick Drop Inlet - 12" thru 30" Pipe
840.16	Drop Inlet Frame and Grates - for use with Std. Dwg 840.14 and 840.15
840.19	Concrete Grated Drop Inlet Type 'D' - 12" thru 36" Pipe
840.24	Frames and Narrow Slot Sag Grates
840.25	Anchorage for Frames - Brick or Concrete or Precast
840.28	Brick Grated Drop Inlet Type 'D' - 12" thru 36" Pipe
840.29	Frames and Narrow Slot Flat Grates
840.31	Concrete Junction Box - 12" thru 66" Pipe
840.32	Brick Junction Box - 12" thru 66" Pipe
840.34	Traffic Bearing Junction Box - for Use with Pipes 42" and Under
840.35	Traffic Bearing Grated Drop Inlet - for Cast Iron Double Frame and Grates
840.45	Precast Drainage Structure
840.46	Traffic Bearing Precast Drainage Structure
840.54	Manhole Frame and Cover
840.66	Drainage Structure Steps
840.72	Pipe Collar
846.01	Concrete Curb, Gutter and Curb & Gutter
848.01	Concrete Sidewalk
848.02	Driveway Turnout - Radius Type
848.04	Street Turnout
848.05	Curb Ramp - Proposed Curb & Gutter
852.01	Concrete Islands
852.06	Method for Placement of Drop Inlets in Concrete Islands
862.01	Guardrail Placement
862.02	Guardrail Installation
876.02	Guide for Rip Rap at Pipe Outlets

2018 ROADWAY ENGLISH STANDARD DRAWINGS

The following Roadway Standards as appear in "Roadway Standard Drawings" Highway Design Branch - N. C. Department of Transportation - Raleigh, N. C., Dated January, 2018 are applicable to this project and by reference hereby are considered a part of these plans:

EFF. 01-16-2018
REV.