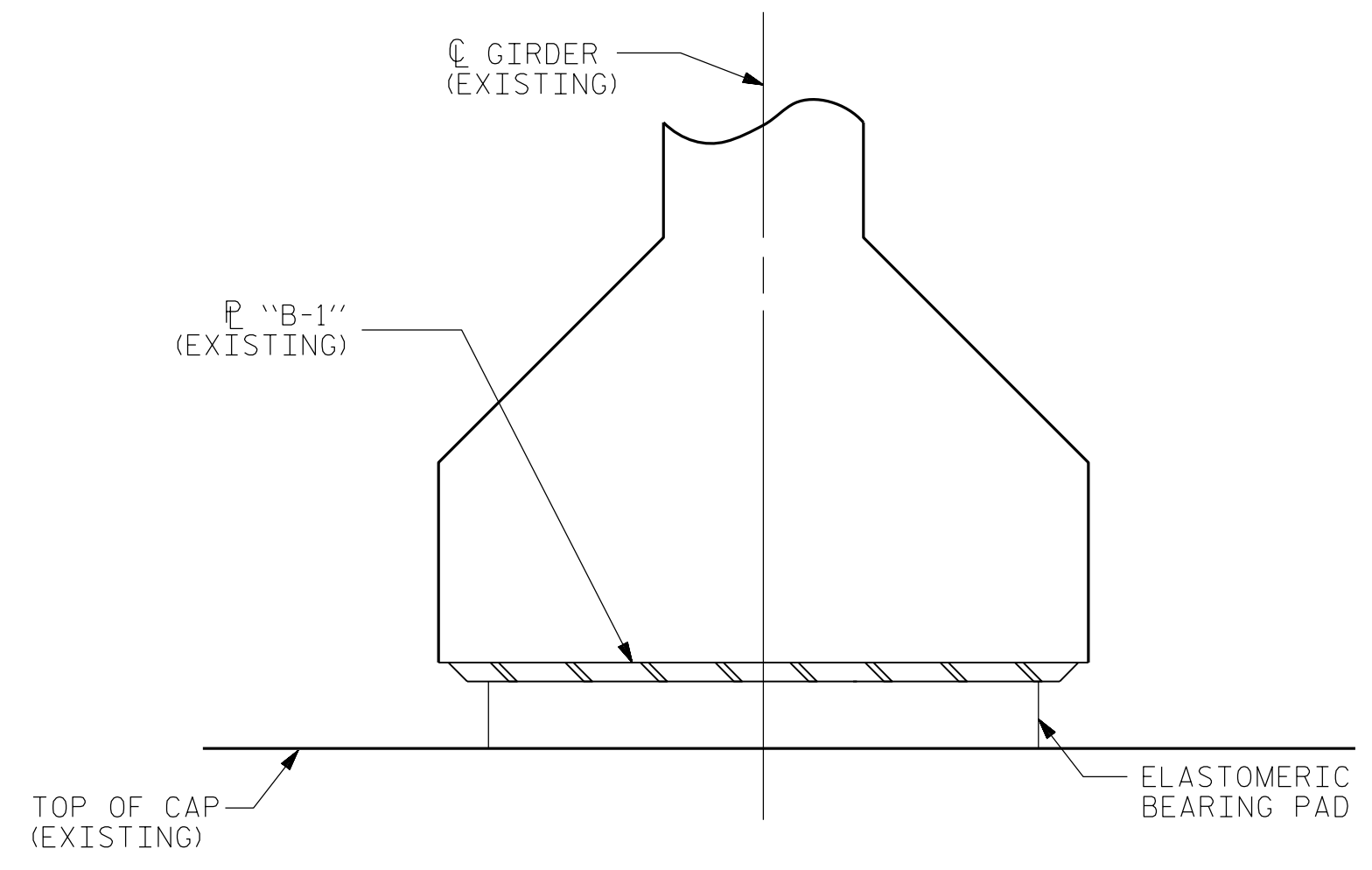
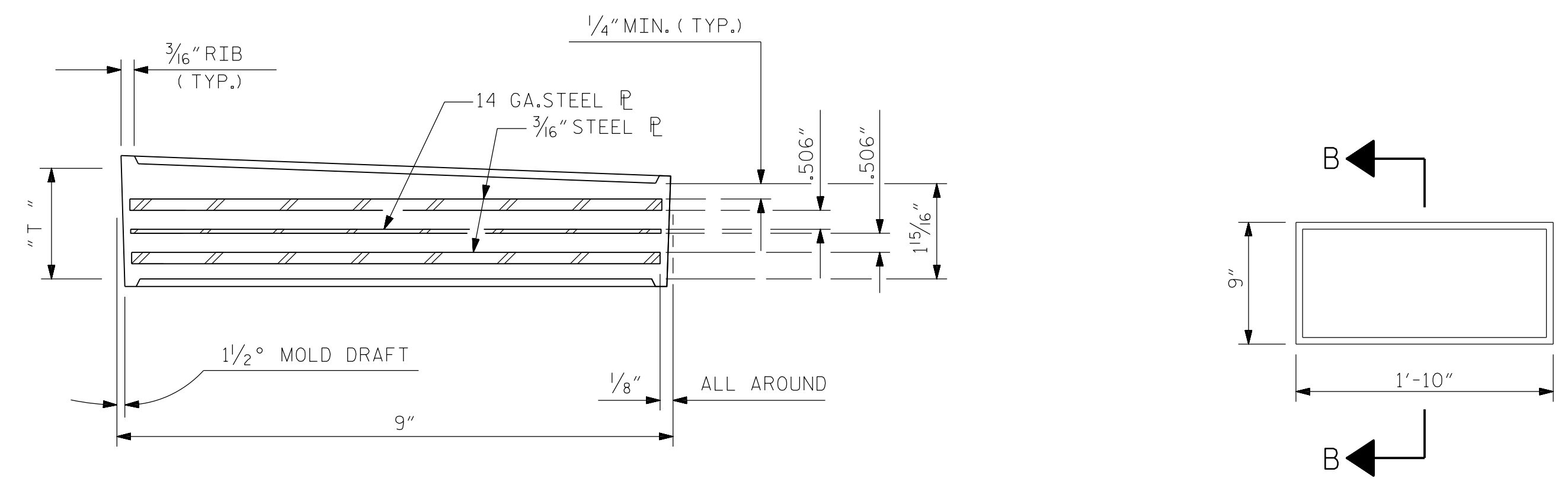


**TYPICAL ELEVATION VIEW OF ELASTOMERIC BEARING**  
(54" PRESTRESSED CONCRETE GIRDER- SPANS 1-14 & 20-33, INT. GIRDERS G2-G6 ONLY)



**TYPICAL ELEVATION VIEW OF ELASTOMERIC BEARING**  
(ALL OTHER 54" PRESTRESSED CONCRETE GIRDERS)

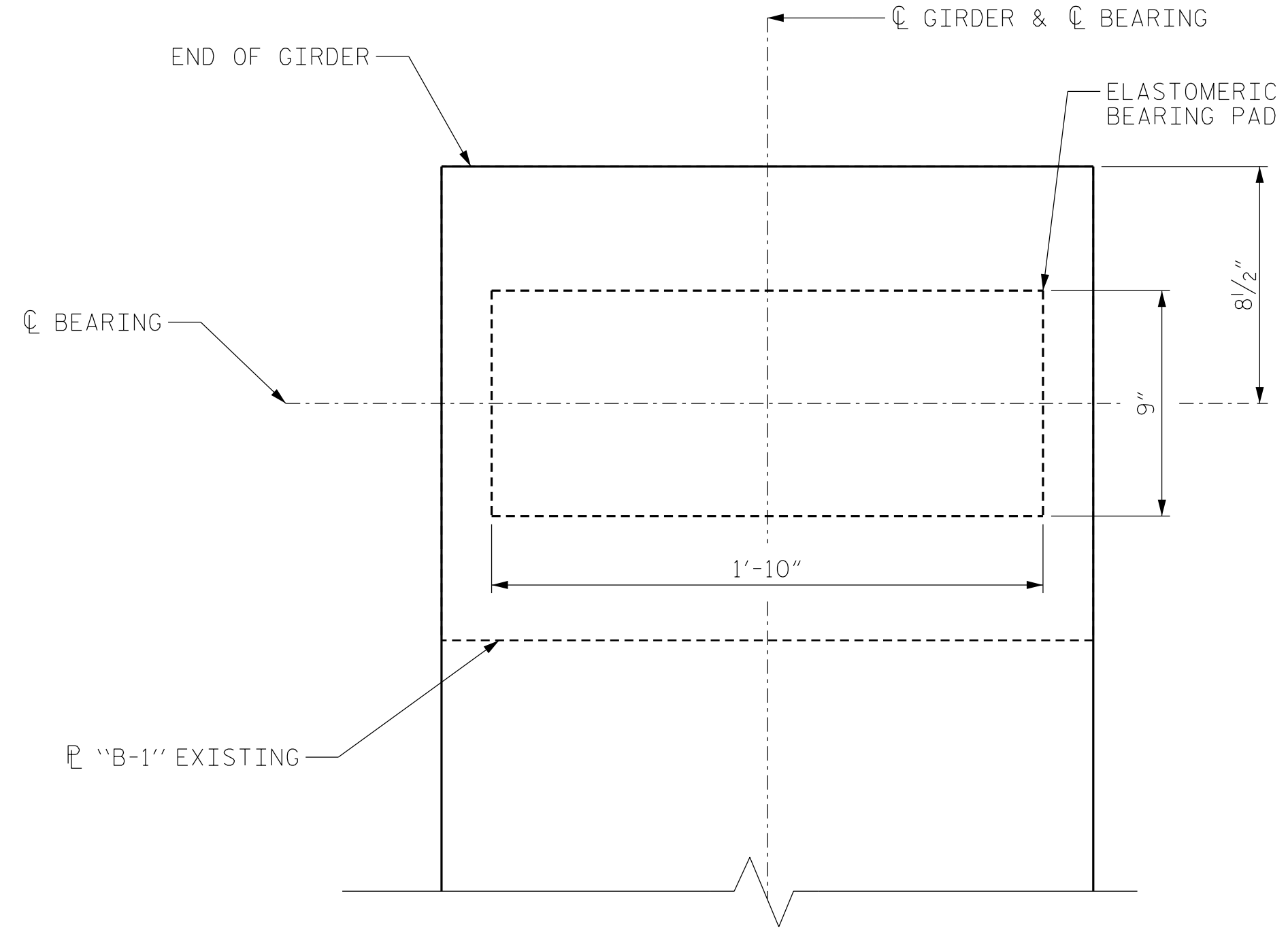


SECTION "B-B"

PLAN VIEW OF ELASTOMERIC BEARING

| BEARING TYPE | THICKNESS "T" | GIRDER GRADE (%) | NUMBER REQUIRED | LOCATION (SPANS) | BEARING TYPES |
|--------------|---------------|------------------|-----------------|------------------|---------------|
| P2           | 2 1/16"       | 1.00 - 2.25      | 3               | 1-10 & 24-33     | P-4           |
| P3           | 2 3/16"       | 2.25 - 3.50      | 14              | 11-13 & 21-23    | P-3           |
| P4           | 2 5/16"       | 3.50 - 5.00      | 36              | 14, 15, 19, & 20 | P-2           |

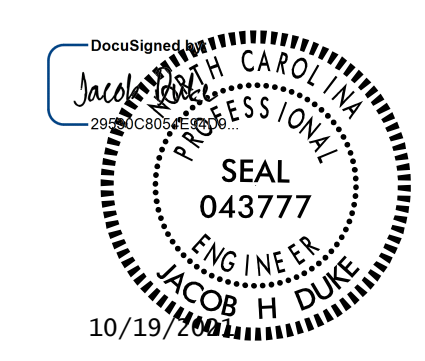
**ELASTOMERIC BEARING DETAIL**  
(54" PRESTRESSED CONCRETE GIRDERS)



**TYPICAL PLAN VIEW OF ELASTOMERIC BEARING**  
(54" PRESTRESSED CONCRETE GIRDERS)

PROJECT NO. 15BPR.46  
DARE COUNTY  
 BRIDGE NO. 270012

SHEET 2 OF 3



STATE OF NORTH CAROLINA  
 DEPARTMENT OF TRANSPORTATION  
 RALEIGH  
**BEARING REPLACEMENT**  
 54" PRESTRESSED CONCRETE  
 GIRDER DETAILS

- NOTES:**
- ELASTOMER IN THE STEEL REINFORCED BEARING SHALL HAVE A SHEAR MODULUS OF 0.160 KSI, IN ACCORDANCE WITH AASHTO M251.
  - FOR STEEL REINFORCED ELASTOMERIC BEARINGS, SEE STANDARD SPECIFICATIONS AND PROJECT SPECIAL PROVISIONS.
  - FOR BRIDGE JACKING, SEE JACKING DETAIL SHEETS.
  - TABLES SHOW EXISTING ELASTOMERIC BEARING SIZES & LOCATIONS, SEE SUPERSTRUCTURE REPAIR SHEETS FOR REPLACEMENT LOCATIONS.

DRAWN BY : FIDEL L. FLORES DATE : 9/30/2020  
 CHECKED BY : SAMUEL L. CULLUM DATE : 10/1/2020  
 DESIGN ENGINEER OF RECORD: JACOB H. DUKE DATE : 10/1/2020

10/19/2021  
 15BPR.46.SMU.B02.270012.dgn  
 jduke

DOCUMENT NOT CONSIDERED  
 FINAL UNLESS ALL  
 SIGNATURES COMPLETED

| REVISIONS |     |       |     |     |       | SHEET NO.    |
|-----------|-----|-------|-----|-----|-------|--------------|
| NO.       | BY: | DATE: | NO. | BY: | DATE: | S-47         |
| 1         |     |       | 3   |     |       | TOTAL SHEETS |
| 2         |     |       | 4   |     |       | 137          |