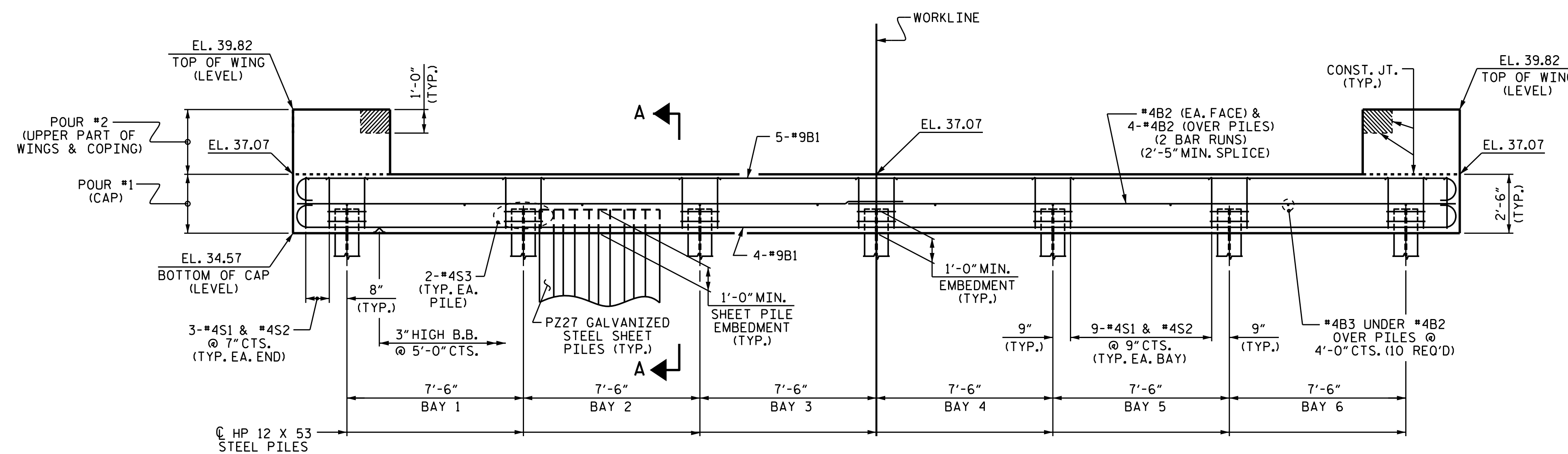


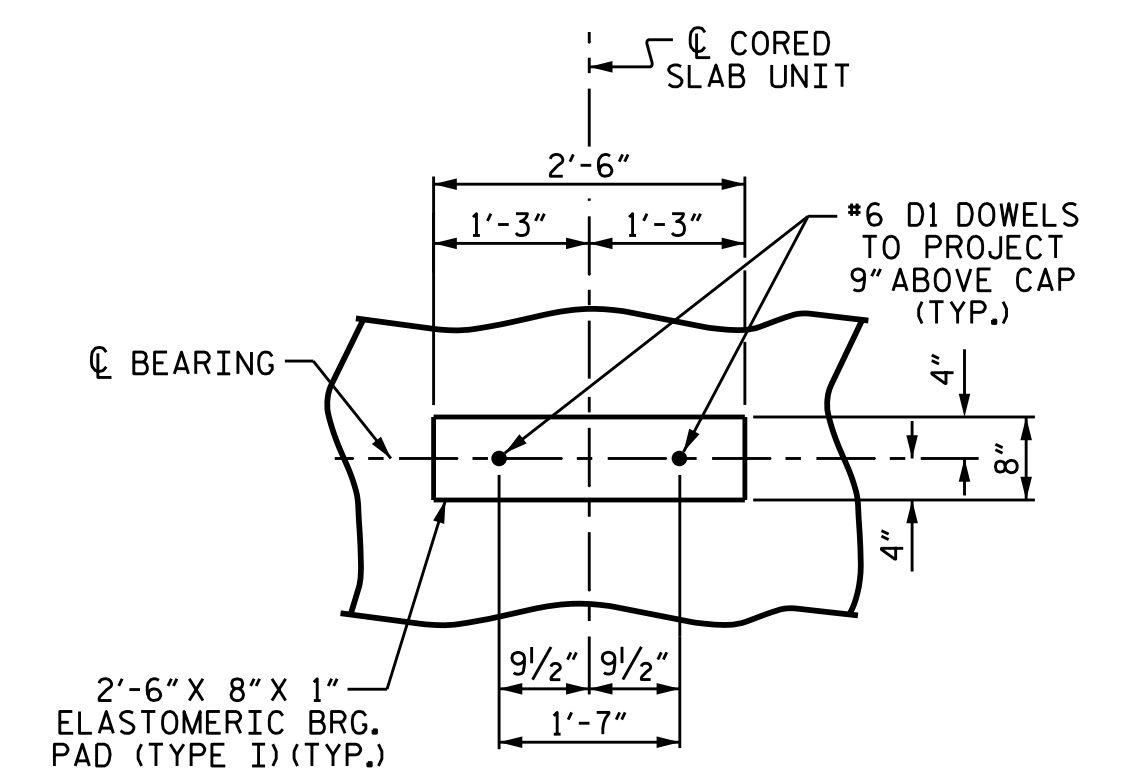
PLAN



ELEVATION

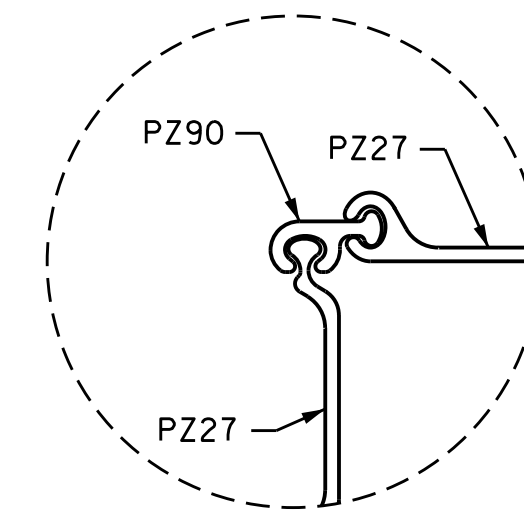
NOTES

- STIRRUPS IN CAP MAY BE SHIFTED AS NECESSARY TO CLEAR DOWELS.
- THE CONCRETE IN THE SHADED AREA OF THE WING SHALL BE POURED AFTER THE VERTICAL CONCRETE BARRIER RAIL IS CAST IF SLIP FORMING IS USED.
- FOR PILE SPLICE DETAILS, SEE SHEET 4 OF 4.
- FOR 18" GALVANIZED STEEL SHEET PILES, SEE SPECIAL PROVISIONS.
- GALVANIZE THE FULL LENGTH OF PZ27 STEEL SHEET PILES IN ACCORDANCE WITH SECTION 1076 OF THE STANDARD SPECIFICATIONS.
- THE CONSTRUCTION SEQUENCE FOR THE 18" STEEL SHEET PILE SYSTEM SHALL BE AS FOLLOWS, UNLESS DIRECTED BY THE ENGINEER:
 - INSTALL ALL SHEET PILES TO THE REQUIRED TIP ELEVATIONS AS SHOWN ON THE PLANS.
 - END BENT PILES SHALL BE DRIVEN BEFORE PLACING BACKFILL.
 - CONSTRUCT THE CAST-IN-PLACE CONCRETE COPING.
 - THE CONCRETE COPING SHALL HAVE A SMOOTH FINISH. CONCRETE COPING IS REQUIRED ALONG THE ENTIRE LENGTH OF STEEL SHEET PILE WINGS.

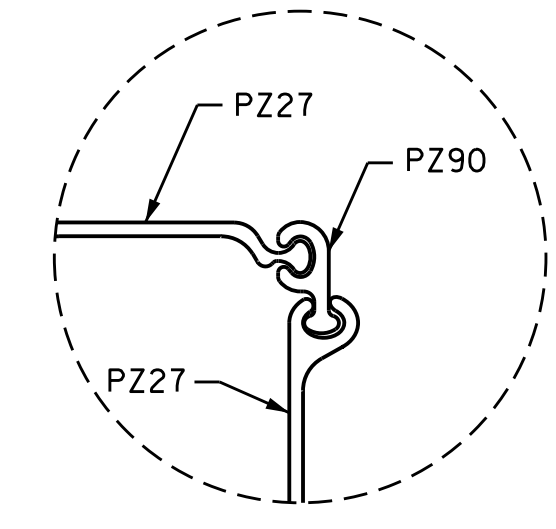


DETAIL "A"

(END BENT 1 SHOWN, END BENT 2 SIMILAR BY ROTATION)



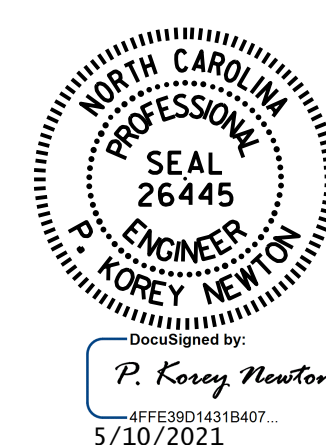
DETAIL "B"



DETAIL "C"

PROJECT NO. B-5642
 BRUNSWICK COUNTY
 STATION: 18+30.00 -L-

SHEET 1 OF 4



STATE OF NORTH CAROLINA
 DEPARTMENT OF TRANSPORTATION
 RALEIGH
 SUBSTRUCTURE
 END BENT 1

DRAWN BY : M.K. BEARD DATE : 02/2020
 CHECKED BY : D. SHACKELFORD DATE : 04/2020
 DESIGN ENGINEER OF RECORD : W. SMITH DATE : 4/22/21

DOCUMENT NOT CONSIDERED
 FINAL UNLESS ALL
 SIGNATURES COMPLETED

REVISIONS		SHEET NO.	
NO.	DATE	NO.	DATE
1		3	
2		4	
		S-9	
		TOTAL SHEETS	14