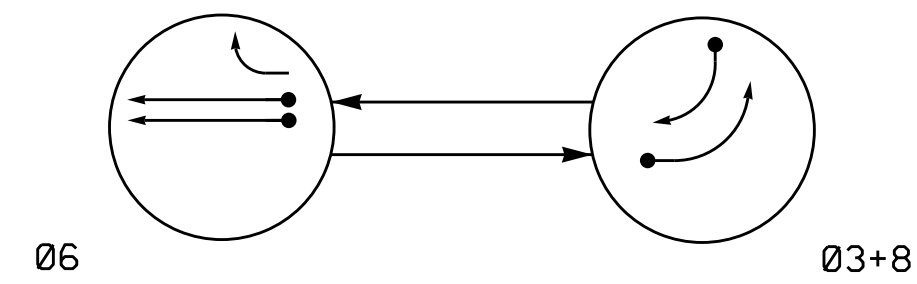


PHASING DIAGRAM

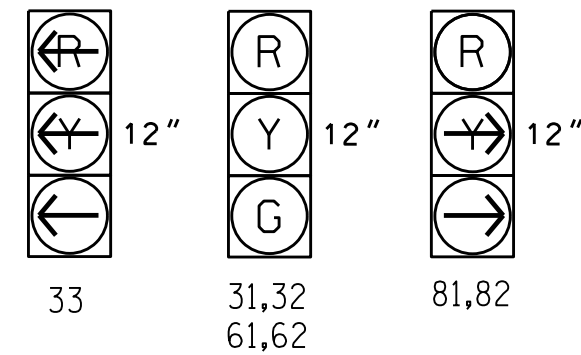


PHASING DIAGRAM DETECTION LEGEND
 ● ← DETECTED MOVEMENT
 ○ ← UNDETECTED MOVEMENT (OVERLAP)
 - - ← UNSIGNALIZED MOVEMENT
 - - - - ← PEDESTRIAN MOVEMENT

| SIGNAL FACE | PHASE | | |
|-------------|---------|-----|-------|
| | 0 2 + 5 | 0 6 | FLASH |
| 31,32 | G | R | R |
| 33 | - | R | R |
| 61,62 | R | G | Y |
| 81,82 | - | R | R |

SIGNAL FACE I.D.

All Heads L.E.D.



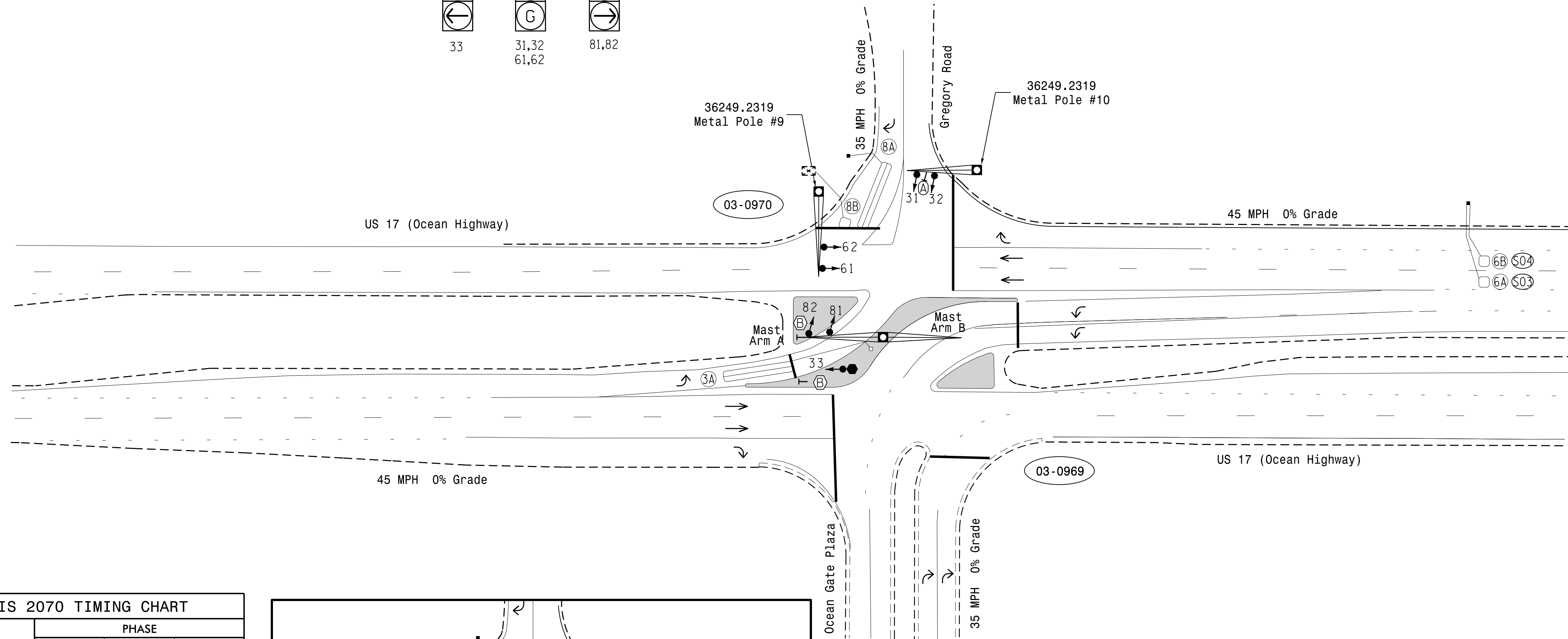
OASIS 2070 LOOP & DETECTOR INSTALLATION CHART

| LOOP | SIZE (FT) | DISTANCE FROM STOPBAR (FT) | TURNS | NEW LOOP | DETECTOR PROGRAMMING | | | | | | | |
|--------|-----------|----------------------------|-------|----------|----------------------|---------|-----------|-----------------|--------------|------------|-------------|----------|
| | | | | | PHASE | CALLING | EXTENSION | FULL TIME DELAY | STRETCH TIME | DELAY TIME | SYSTEM LOOP | NEW CARD |
| 3A | 6X40 | 0 | 2-4-2 | Y | 3 | Y | Y | - | - | - | - | - |
| 6A/S03 | 6X6 | 300 | 4 | Y | 6 | Y | Y | - | - | - | Y | - |
| 6B/S04 | 6X6 | 300 | 4 | Y | 6 | Y | Y | - | - | - | Y | - |
| 8A | 6X40 | 0 | 2-4-2 | Y | 8 | Y | Y | - | - | 20 | - | - |
| 8B | 6X6 | 0 | 3 | Y | 8 | Y | Y | - | - | 20 | - | - |

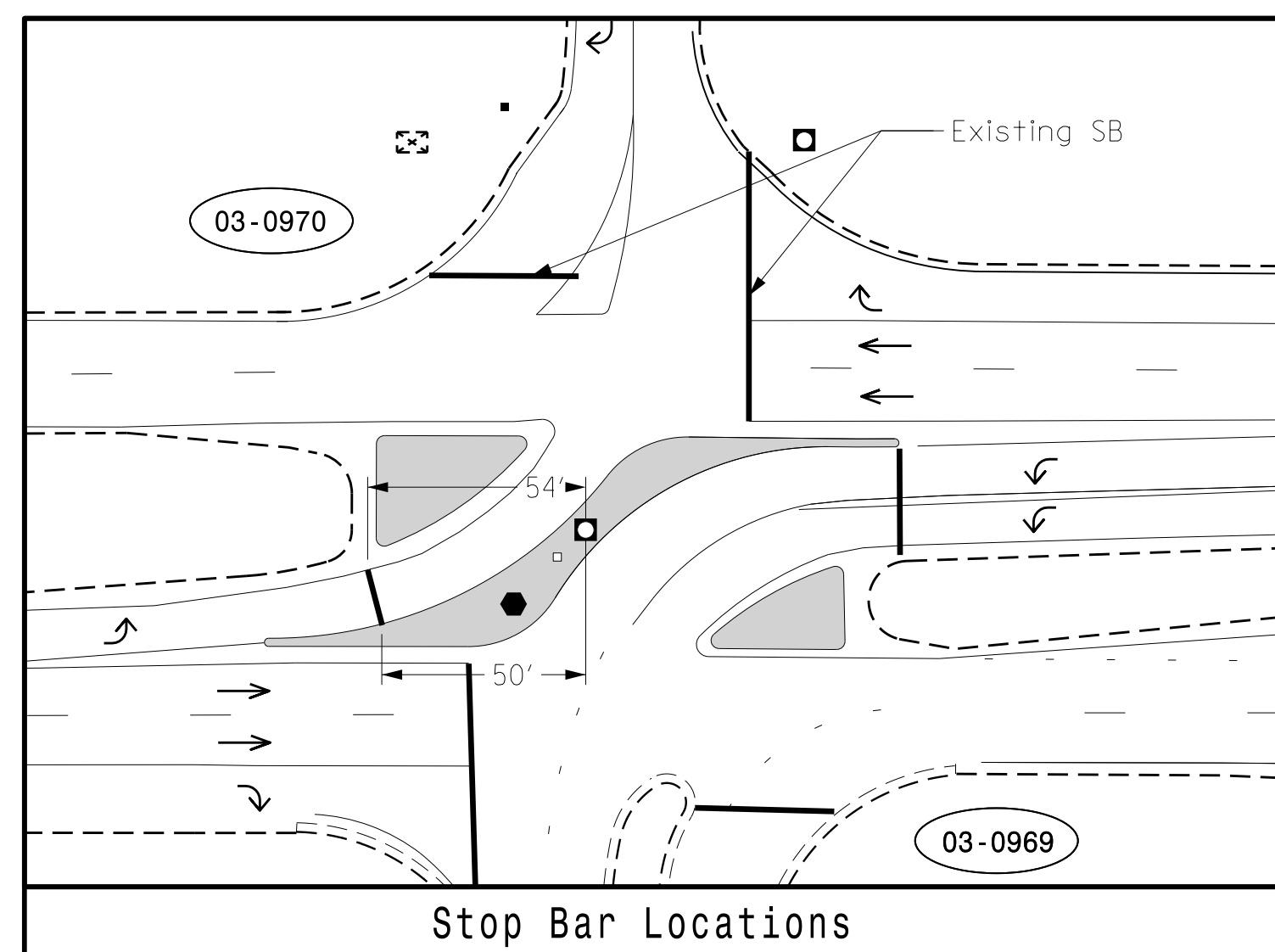
2 Phase Fully Actuated
 US 17 (Ocean Hwy) - Leland Superstreet
 D03-12 Leland

NOTES

- Refer to "Roadway Standard Drawings NCDOT" dated January 2018 and "Standard Specifications for Roads and Structures" dated January 2018.
- Do not program signal for late night flashing operation unless otherwise directed by the Engineer.
- Renumber existing signal heads numbered 51,52,53,54 and 55 as 31,32,33,81, and 82, respectively.
- Renumber existing loops 5A and 5B as 3A and 8A, respectively.
- Set all detector units to presence mode.
- Pavement markings are existing.
- Maximum times shown in timing chart are for free-run operation only. Coordinated signal system timing values supersede these values.
- Closed loop system data: Controller Asset # 0970.



| FEATURE | PHASE | | |
|-------------------------|-------|------------|-----|
| | 3 | 6 | 8 |
| Min Green 1 * | 7 | 12 | 7 |
| Extension 1 * | 2.0 | 6.0 | 2.0 |
| Max Green 1 * | 30 | 90 | 30 |
| Yellow Clearance | 3.0 | 4.5 | 3.0 |
| Red Clearance | 3.5 | 1.0 | 3.5 |
| Walk 1 * | - | - | - |
| Don't Walk 1 | - | - | - |
| Seconds Per Actuation * | - | 1.5 | - |
| Max Variable Initial * | - | 34 | - |
| Time Before Reduction * | - | 15 | - |
| Time To Reduce * | - | 50 | - |
| Minimum Gap | - | 3.0 | - |
| Recall Mode | - | MIN RECALL | - |
| Vehicle Call Memory | - | YELLOW | - |
| Dual Entry | ON | - | ON |
| Simultaneous Gap | ON | ON | ON |



| PROPOSED | LEGEND | EXISTING |
|----------|--|----------|
| ○ → | Traffic Signal Head | ● → |
| ○ → | Modified Signal Head | N/A |
| □ | Sign | □ |
| □ | Pedestrian Signal Head With Push Button & Sign | □ |
| □ | Signal Pole with Guy | □ |
| □ | Signal Pole with Sidewalk Guy | □ |
| □ | Inductive Loop Detector | □ |
| □ | Controller & Cabinet | □ |
| □ | Junction Box | □ |
| □ | 2-in Underground Conduit | □ |
| N/A | Right of Way | □ |
| → | Directional Arrow | → |
| ○ | Metal Pole with Mastarm | ○ |
| ○ | Type II Signal Pedestal | ○ |
| Ⓐ | Through Arrow "ONLY" Sign (R3-5A) | Ⓐ |
| Ⓑ | Stop Here on Red (R10-6) | Ⓑ |

* These values may be field adjusted. Do not adjust Min Green and Extension times for phase 6 lower than what is shown. Min Green for all other phases should not be lower than 4 seconds.

Signal Upgrade

Prepared in the Offices of:
 Transportation Mobility and Safety Solutions
 STATE OF CAROLINA
 DEPARTMENT OF TRANSPORTATION
 Signal Design Section

US 17 (Ocean Highway) at Gregory Road
 Division 3 Brunswick County Leland

PLAN DATE: October 2021 REVIEWED BY: MEL
 PREPARED BY: KGP, Jr. REVIEWED BY:

750 N. Greenfield Pkwy, Garner, NC 27529

REVISIONS: INIT. DATE

SCALE: 1" = 40'

DOCUMENT NOT CONSIDERED FINAL UNLESS ALL SIGNATURES COMPLETED

SEAL: MECHAN E. LEBLANC, PROFESSIONAL ENGINEER, 042608

DATE: 10/27/2021

SIG. INVENTORY NO. 03-0970

20-007-2021.11.15
 S:\IT\GIS\KITS\Sig\03-0970-03\US 17 Leland 2022 Resurfacing\03-0970-03\03-0970-03.dgn, 2021mtds.dgn
 KGP/edf/r