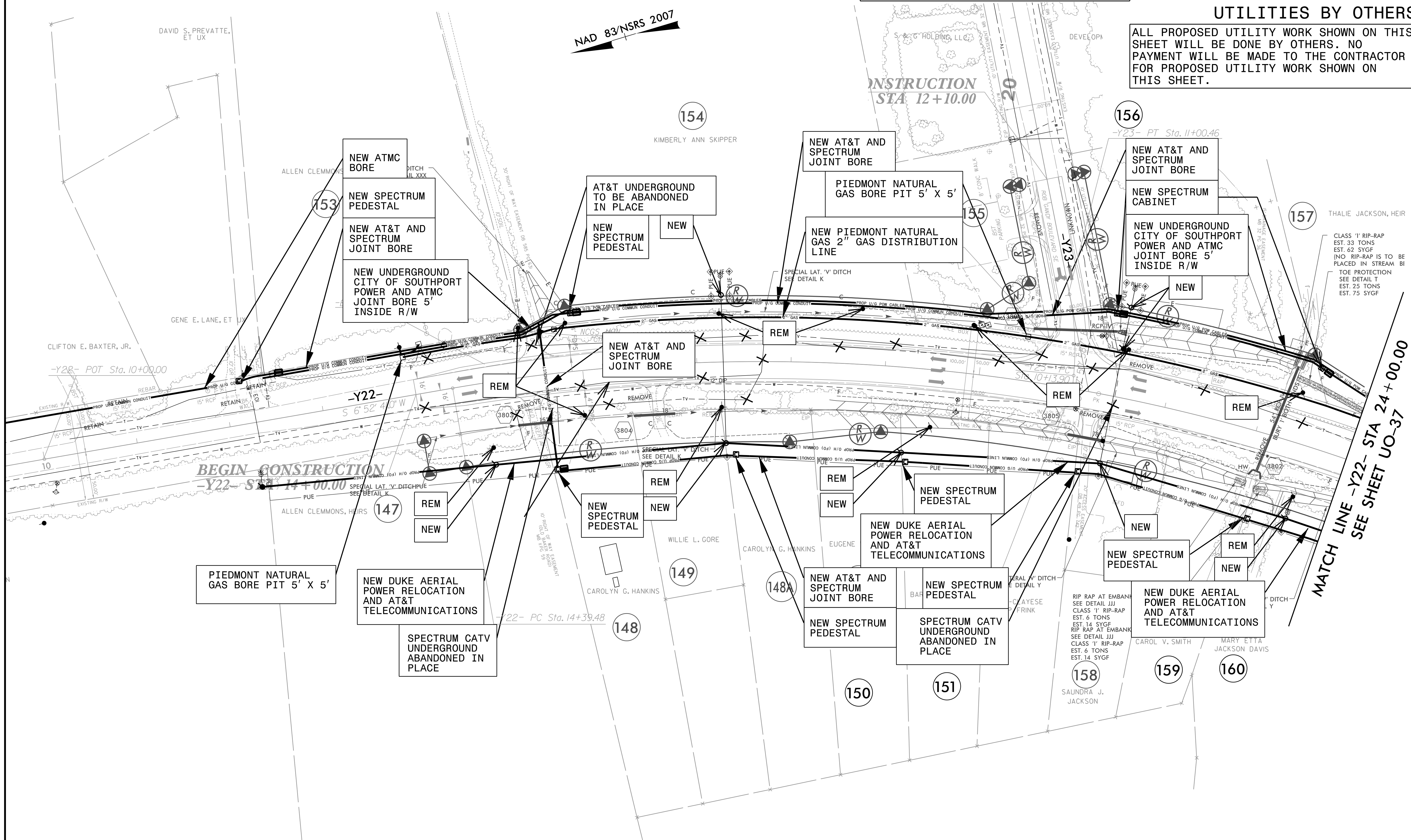


UTILITIES BY OTHERS

ALL PROPOSED UTILITY WORK SHOWN ON THIS SHEET WILL BE DONE BY OTHERS. NO PAYMENT WILL BE MADE TO THE CONTRACTOR FOR PROPOSED UTILITY WORK SHOWN ON THIS SHEET.

5/14/99
 2/19/2019
 C:\Projects\2013\3113\Utility_Coordination\NCD01\1001\00-R-5021\UBOs\Dr-y-ONL Y-R-5021-UT-rdy38-U036-psh.dgn
 mawson



MATCH LINE -Y22- STA 24+00.00
 SEE SHEET UO-37

NOTE:
 1. PIEDMONT NATURAL GAS WILL OPEN TRENCH CUT ALL GAS LINE THAT IS LESS THAN 100', EXCEPT IN WETLAND AREAS

UTILITY OWNERS ON THIS SHEET

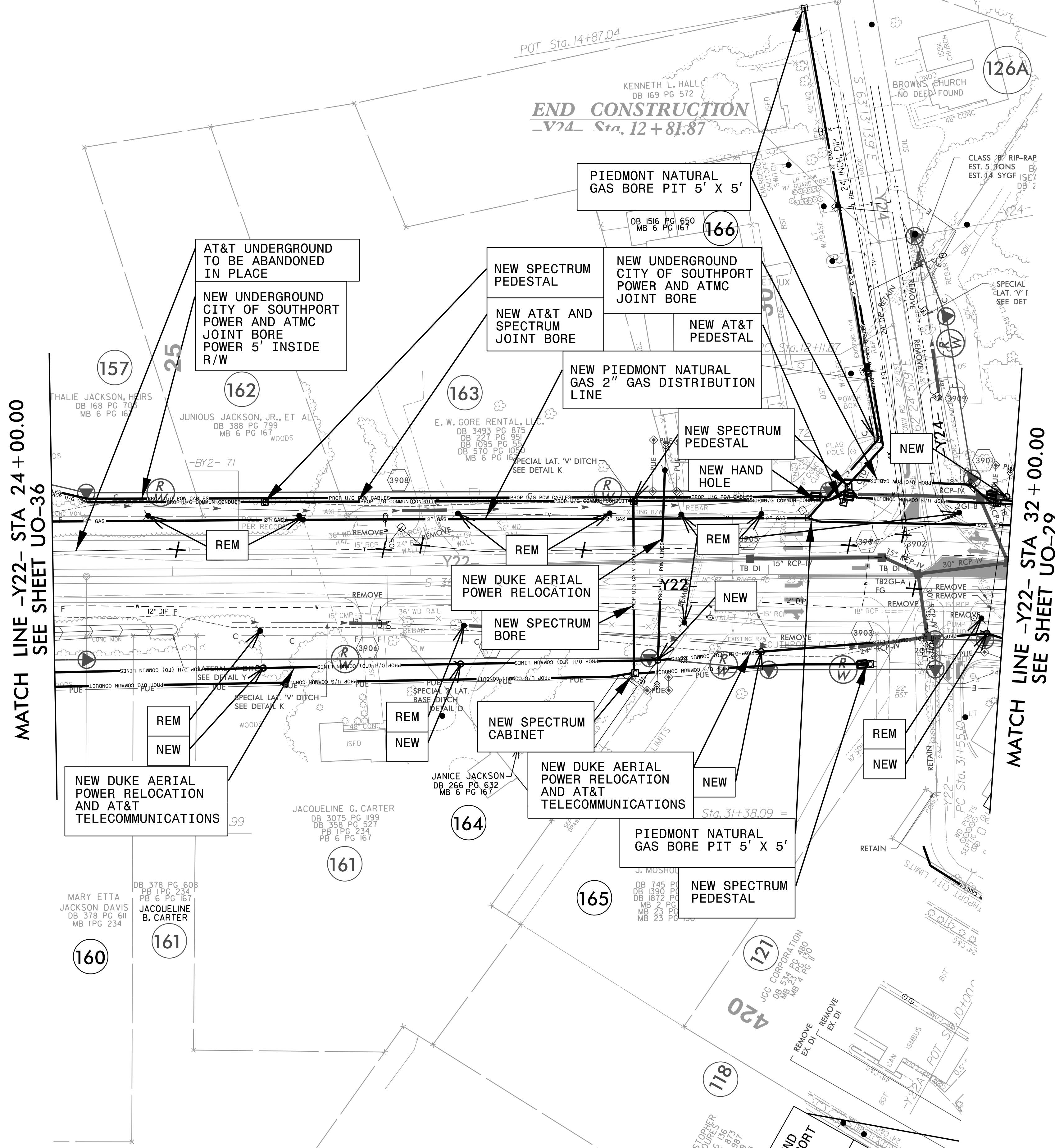
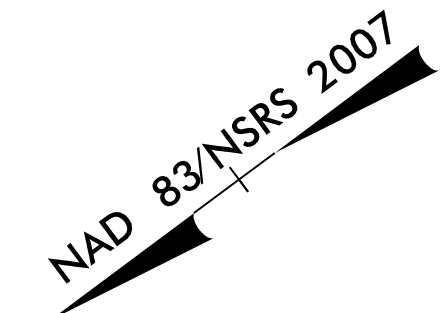
DUKE ENERGY - POWER (DIST)
 CITY OF SOUTHPORT POWER - POWER (DIST)
 AT&T - TELECOMMUNICATIONS/FIBER OPTIC
 AT&T - TELECOMMUNICATIONS/FIBER OPTIC
 SPECTRUM - CATV
 PIEDMONT NATURAL GAS - NATURAL GAS

PLANS PREPARED BY :

RK&K
 RUMMEL, KLEPPER & KAHL, LLP
 900 RIDGEFIELD DRIVE SUITE 350
 RALEIGH, NORTH CAROLINA 27609-3960
 NC LICENSE NO. F-0112 • (919) 878-9560

UTILITIES BY OTHERS

NOTE:
 ALL UTILITY WORK SHOWN ON THIS SHEET WILL BE DONE BY OTHERS. NO PAYMENT WILL BE MADE TO THE CONTRACTOR FOR UTILITY WORK SHOWN ON THIS SHEET.



MATCH LINE -Y22- STA 24+00.00
SEE SHEET UO-36

MATCH LINE -Y22- STA 32+00.00
SEE SHEET UO-29

NOTE:
 1. PIEDMONT NATURAL GAS WILL OPEN TRENCH CUT ALL GAS LINE THAT IS LESS THAN 100', EXCEPT IN WETLAND AREAS

UTILITY OWNERS ON THIS SHEET
DUKE ENERGY - POWER (DIST)
CITY OF SOUTHPORT POWER - POWER (DIST)
AT&T - TELECOMMUNICATIONS/FIBER OPTIC
AT&M - TELECOMMUNICATIONS/FIBER OPTIC
SPECTRUM - CATV
PIEDMONT NATURAL GAS - NATURAL GAS

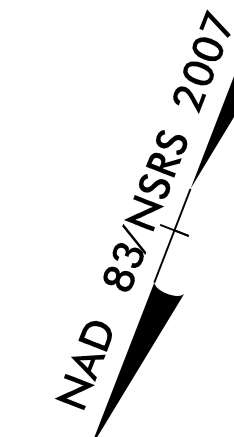
PLANS PREPARED BY :

 RUMMEL, KLEPPER & KAHL, LLP
 900 RIDGEFIELD DRIVE SUITE 350
 RALEIGH, NORTH CAROLINA 27609-3960
 NC LICENSE NO. F-0112 • (919) 878-9560

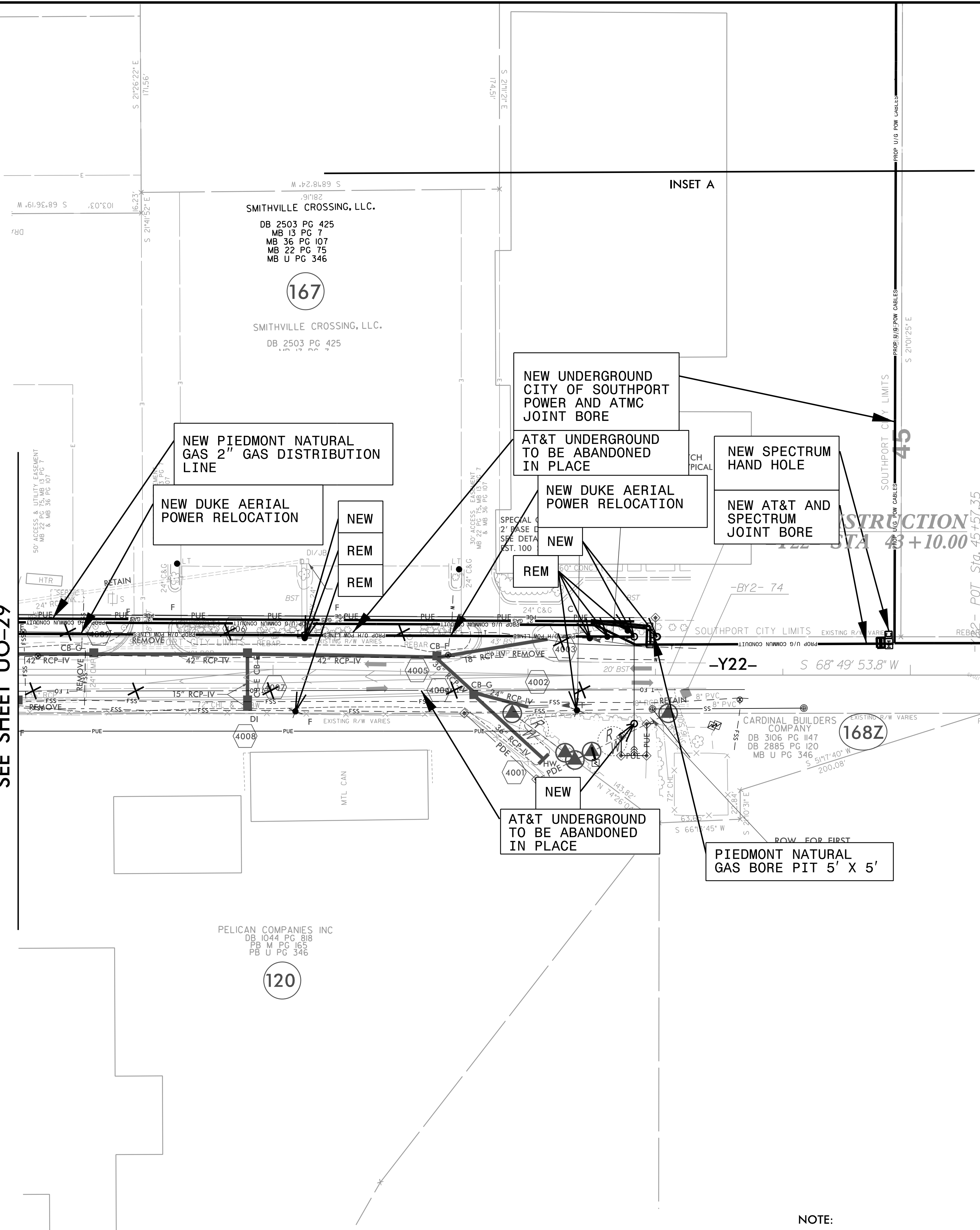
2/19/2018 \\Fs\sr\02\Projects\2013\1311\Utility_Coordination_(NCD01)\D01_R-5021\NR-5021\Utilities\Engineering\UBOs\Proj\00-R-5021\UBOs_Dry_ONL_Y.R-5021\ut_rdy39_U037_psh.dgn
 5/14/99

UTILITIES BY OTHERS

NOTE:
 ALL UTILITY WORK SHOWN ON THIS SHEET WILL BE DONE BY OTHERS. NO PAYMENT WILL BE MADE TO THE CONTRACTOR FOR UTILITY WORK SHOWN ON THIS SHEET.

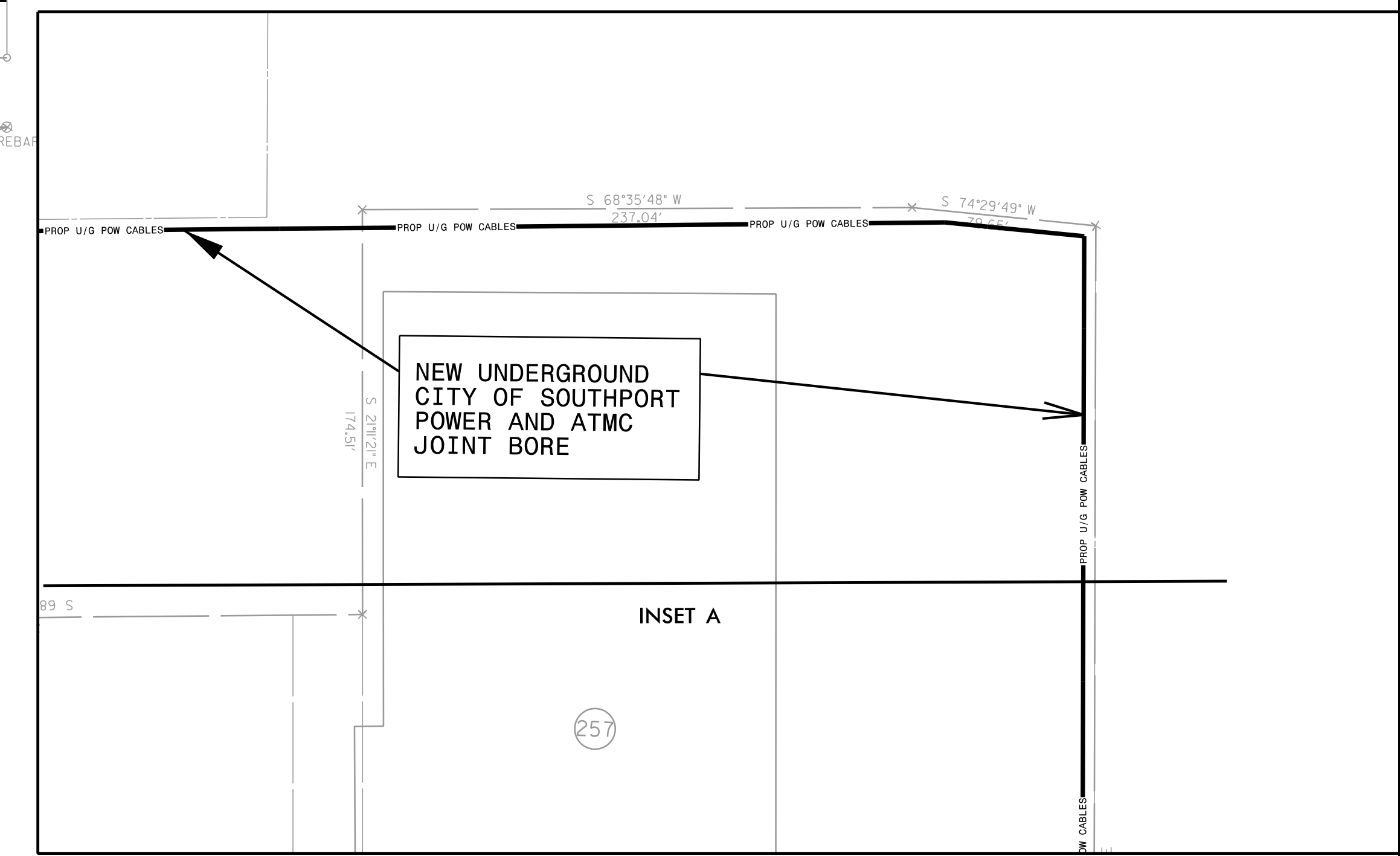


MATCH LINE -Y22- STA 38+00.00
SEE SHEET UO-29



RESTRICTION
 STA 43+10.00

INSET A
 1. PROPOSED CITY OF SOUTHPORT ROUTING IN THEIR OWN EASEMENT



NOTE:

1. PIEDMONT NATURAL GAS WILL OPEN TRENCH CUT ALL GAS LINE THAT IS LESS THAN 100', EXCEPT IN WETLAND AREAS

UTILITY OWNERS ON THIS SHEET

- DUKE ENERGY - POWER (DIST)
- CITY OF SOUTHPORT POWER - POWER (DIST)
- AT&T - TELECOMMUNICATIONS/FIBER OPTIC
- AT&T - TELECOMMUNICATIONS/FIBER OPTIC
- SPECTRUM - CATV
- PIEDMONT NATURAL GAS - NATURAL GAS

PLANS PREPARED BY :



5/14/2019 2:18:20 PM C:\Projects\2013\13\13\Utility_Coordination_INCD01\1\00-R-5021\UO-38.dwg
 5/14/2019 2:18:20 PM C:\Projects\2013\13\13\Utility_Coordination_INCD01\1\00-R-5021\UO-38.dwg
 5/14/2019 2:18:20 PM C:\Projects\2013\13\13\Utility_Coordination_INCD01\1\00-R-5021\UO-38.dwg