

GEOTECHNICAL ENGINEER

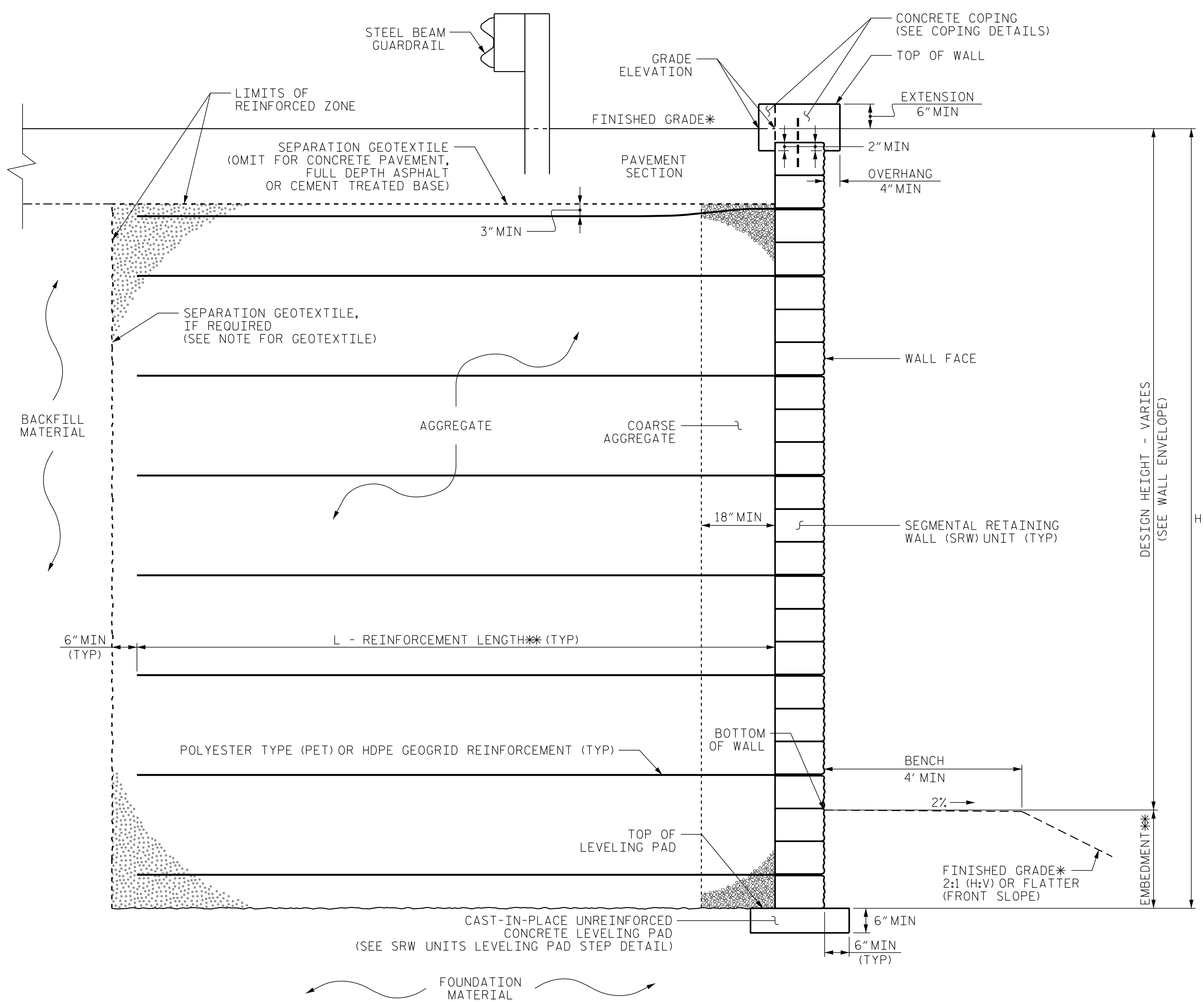
ENGINEER

PROFESSIONAL SEAL
030943
THEIN TUN ZAN

Designed by: Thein Tun Zan DATE: 2/28/2019

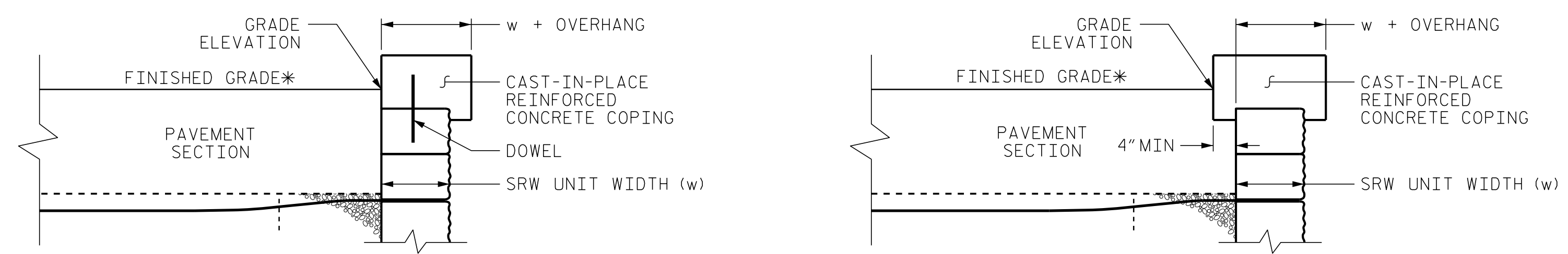
Signature: _____ DATE: _____

**DOCUMENT NOT CONSIDERED FINAL
UNLESS ALL SIGNATURES COMPLETED**



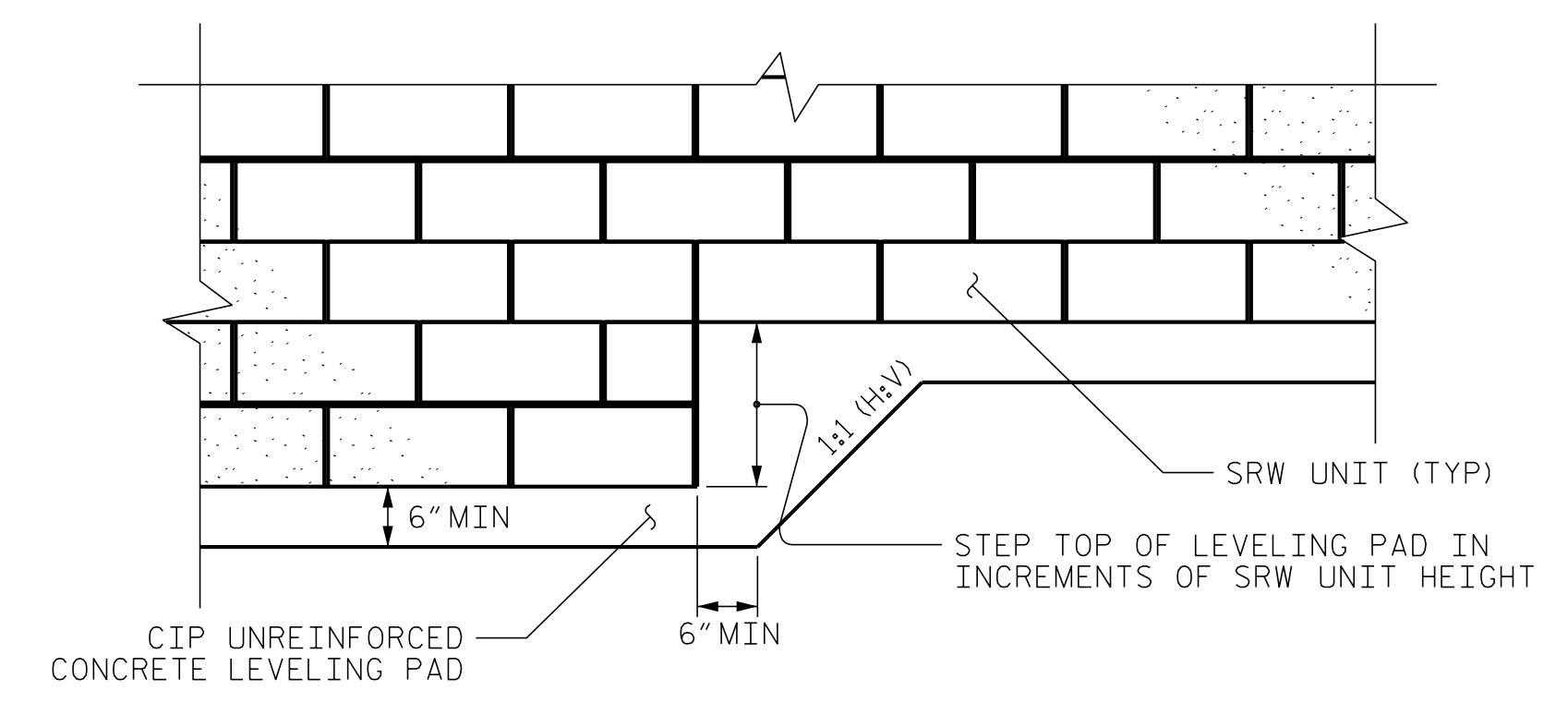
MSE WALL WITH SRW UNITS - TYPICAL SECTION

*SEE MSE RETAINING WALLS PROVISION AND IF APPLICABLE, MSE WALL NOTES FOR EMBEDMENT AND REINFORCEMENT LENGTH REQUIREMENTS.
*SEE ROADWAY PLANS FOR FINISHED GRADE DETAILS.



COPING DETAILS

AT THE CONTRACTOR'S OPTION, CONNECT COPING TO SRW UNITS WITH DOWELS OR EXTEND COPING DOWN BACK OF SRW UNITS.
*SEE ROADWAY PLANS FOR FINISHED GRADE DETAILS.



SRW UNITS LEVELING PAD STEP DETAIL

PREPARED BY: THEIN TUN ZAN	DATE: 01-2019
REVIEWED BY: JAMES BATTS	DATE: 01-2019

NORTH CAROLINA
DEPARTMENT OF TRANSPORTATION
DIVISION OF HIGHWAYS

**GEOTECHNICAL
ENGINEERING UNIT**

PROJECT NO.: R-5021
BRUNSWICK COUNTY
STATION: 48+50 -WALL12- & 47+00 -WALL13-
SHEET 3 OF 5

REVISIONS						SHEET NO.
NO.	BY	DATE	NO.	BY	DATE	
1	-	-	3	-	-	W-20
2	-	-	4	-	-	