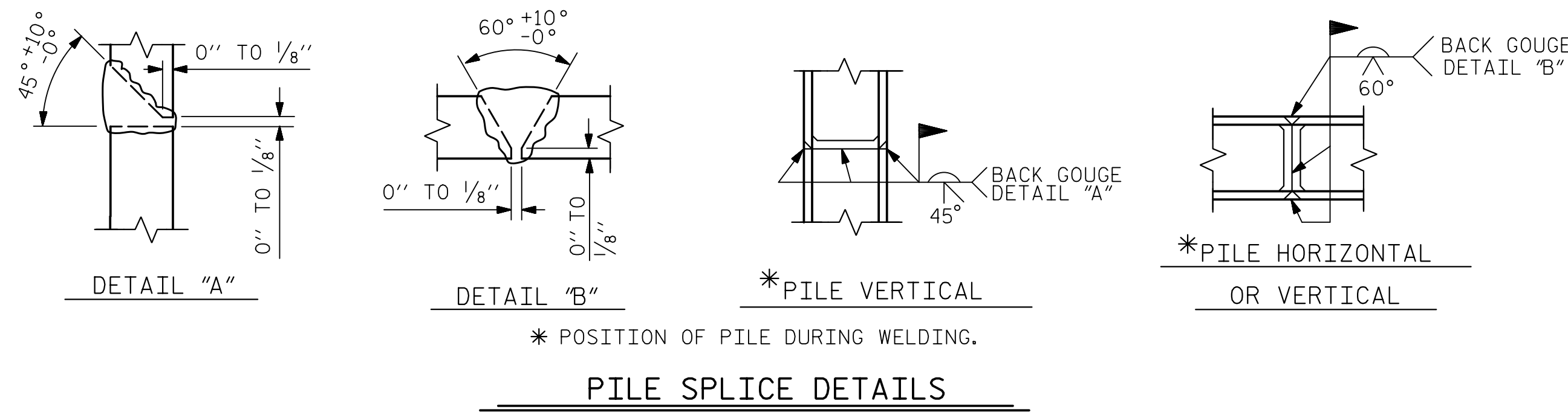


BAGGED STONE AND PIPE SHALL BE PLACED IMMEDIATELY AFTER COMPLETION OF END BENT EXCAVATION. PIPE MAY BE EITHER CONCRETE, CORRUGATED STEEL, CORRUGATED ALUMINUM ALLOY OR CORRUGATED PLASTIC. PERFORATED PIPE WILL NOT BE ALLOWED.

BAGGED STONE SHALL REMAIN IN PLACE UNTIL THE ENGINEER DIRECTS THAT IT BE REMOVED. THE CONTRACTOR SHALL REMOVE AND DISPOSE OF SILT ACCUMULATIONS AT BAGGED STONE WHEN SO DIRECTED BY THE ENGINEER. BAGS SHALL BE REMOVED AND REPLACED WHENEVER THE ENGINEER DETERMINES THAT THEY HAVE DETERIORATED AND LOST THEIR EFFECTIVENESS.

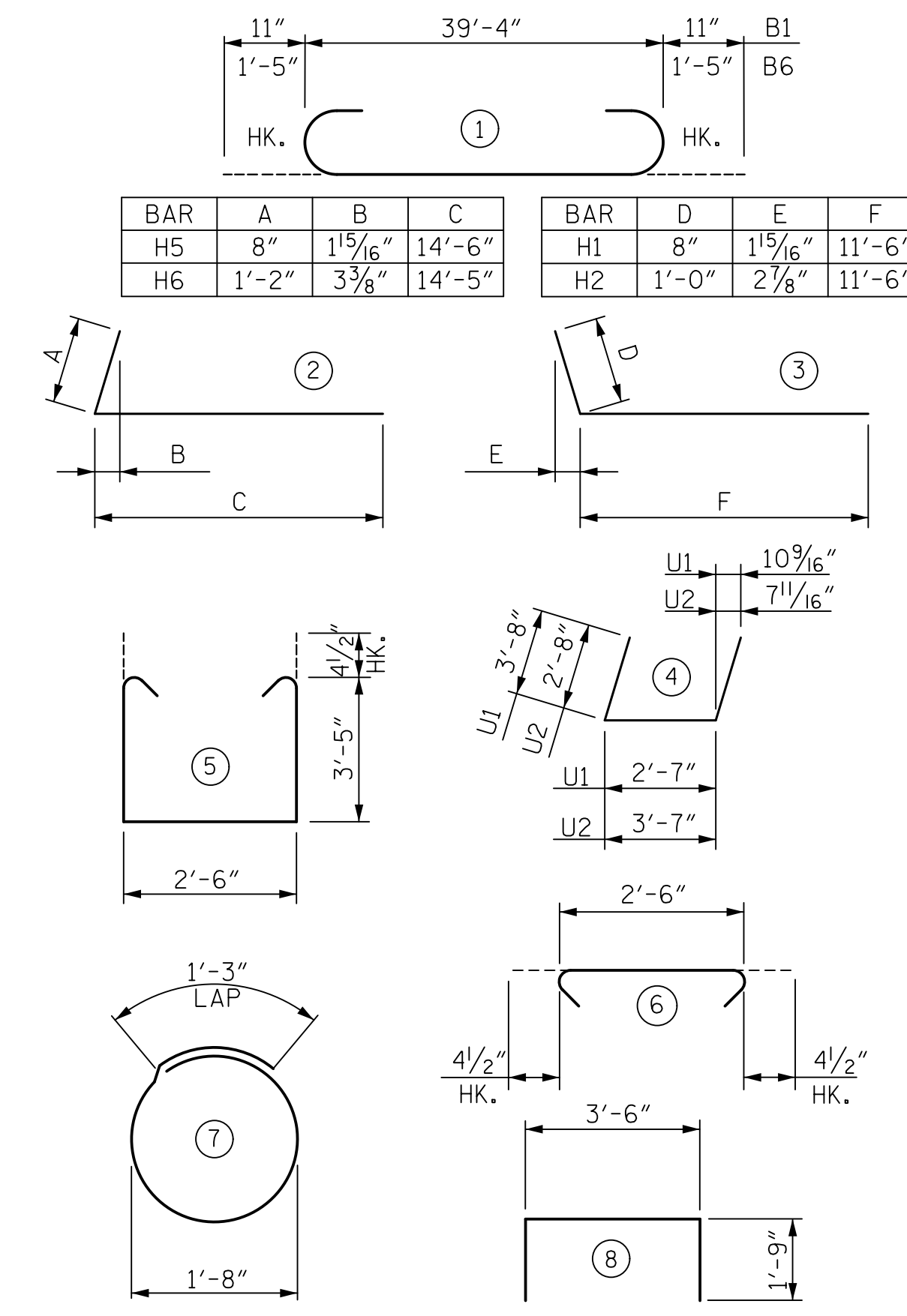
NO SEPARATE PAYMENT WILL BE MADE FOR THIS WORK AND THE ENTIRE COST OF THIS WORK SHALL BE INCLUDED IN THE UNIT CONTRACT PRICE FOR THE SEVERAL PAY ITEMS.

TEMPORARY DRAINAGE AT END BENT 2



PILE SPLICE DETAILS

BAR TYPES



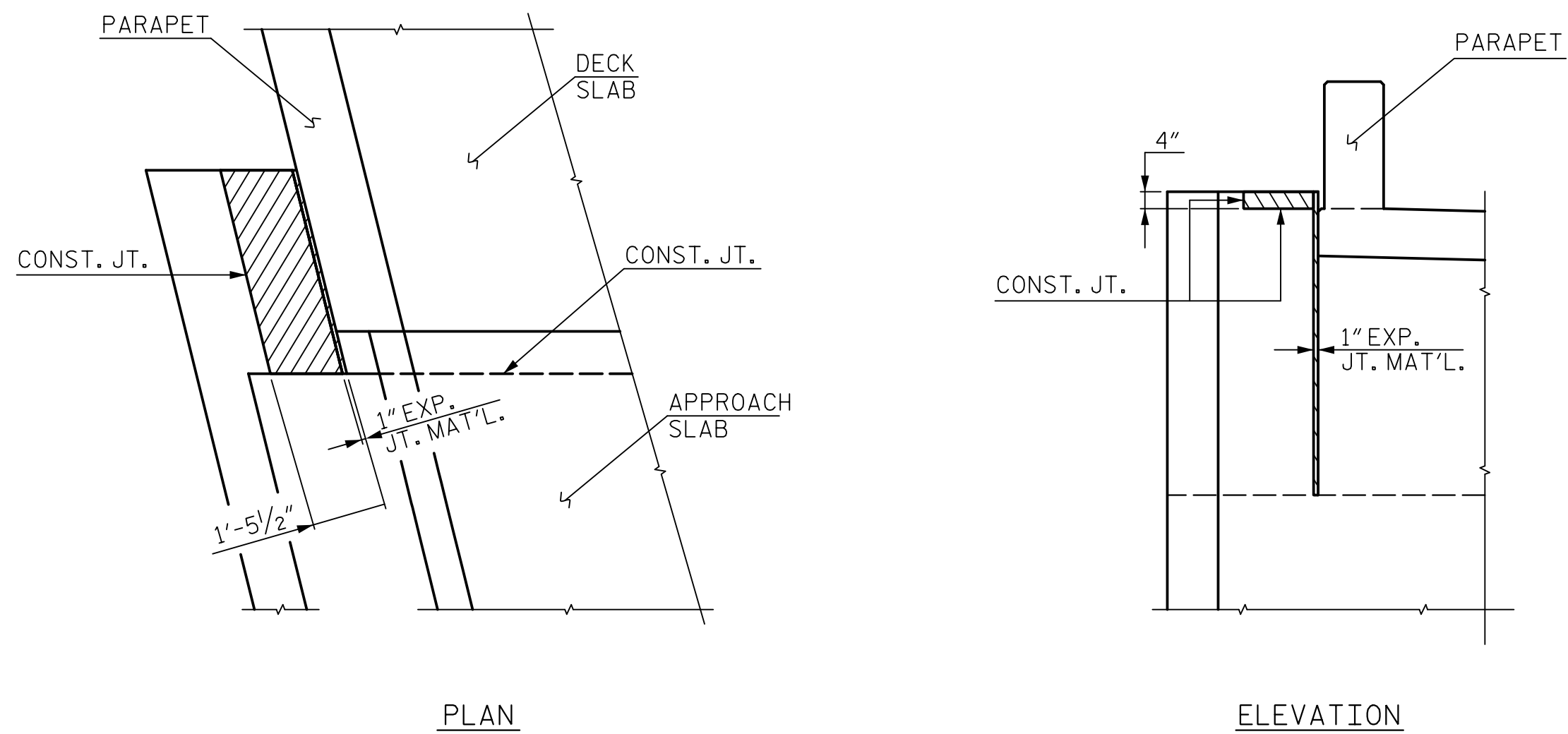
ALL BAR DIMENSIONS ARE OUT TO OUT

BILL OF REINFORCING

END BENT 2						
BAR	NO.	SIZE	TYPE	LENGTH	WEIGHT	
B1	6	#8	1	41'-2"	659	
B2	32	#4	STR.	20'-10"	445	
B3	9	#4	STR.	3'-6"	21	
B4	6	#4	STR.	9'-0"	36	
B5	6	#4	STR.	12'-8"	51	
B6	8	#10	1	42'-2"	1,452	
D1	56	#5	STR.	6'-5"	375	
D2	16	#5	STR.	8'-3"	138	
H1	7	#4	3	12'-2"	57	
H2	12	#6	3	12'-6"	225	
H3	5	#4	STR.	13'-2"	44	
H4	9	#6	STR.	13'-5"	181	
H5	11	#4	2	15'-2"	111	
H6	20	#7	2	15'-7"	637	
S1	100	#4	5	10'-1"	674	
S2	100	#4	6	3'-3"	217	
S3	28	#4	7	6'-6"	122	
S4	15	#4	8	7'-0"	70	
V1	32	#5	STR.	10'-0"	334	
V2	36	#5	STR.	9'-4"	350	
U1	7	#5	4	9'-11"	72	
U2	7	#5	4	8'-11"	65	
QUANTITIES						
EPOXY COATED REINFORCING STEEL					LBS.	6,336
CLASS AA CONCRETE BREAKDOWN						
POUR 1 - CAP					CU. YDS.	30.1
POUR 2 - WINGS					CU. YDS.	9.6
TOTAL:					CU. YDS.	39.7
HP 12x53 STEEL PILES					NO.	7
					LIN. FT.	560

NOTES:

THE TOP SURFACE OF THE END BENT CAP, EXCEPT THE BEARING AREA, SHALL BE RAKED TO A DEPTH OF 1/4".

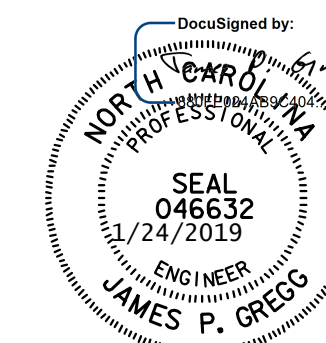


PROJECT NO. R-5021
BRUNSWICK COUNTY
 STATION: POC 390+15.00 -L-

SHEET 3 OF 3

STATE OF NORTH CAROLINA
 DEPARTMENT OF TRANSPORTATION
 RALEIGH

SUBSTRUCTURE
 END BENT 2
 RIGHT LANE



HNTB HNTB NORTH CAROLINA, P.C.
 NC License No. C-1554
 343 E. Six Forks Rd., Suite 200, Raleigh, N.C. 27609

DRAWN BY: A. SMITH DATE: 9/17
 CHECKED BY: B. EMAMI DATE: 9/17
 DESIGN ENGINEER OF RECORD: J. GREGG DATE: 8/18
 DWG. NO. 33

REVISIONS						SHEET NO.
NO.	BY	DATE	NO.	BY	DATE	S6-33
1			3			TOTAL SHEETS
2			4			39