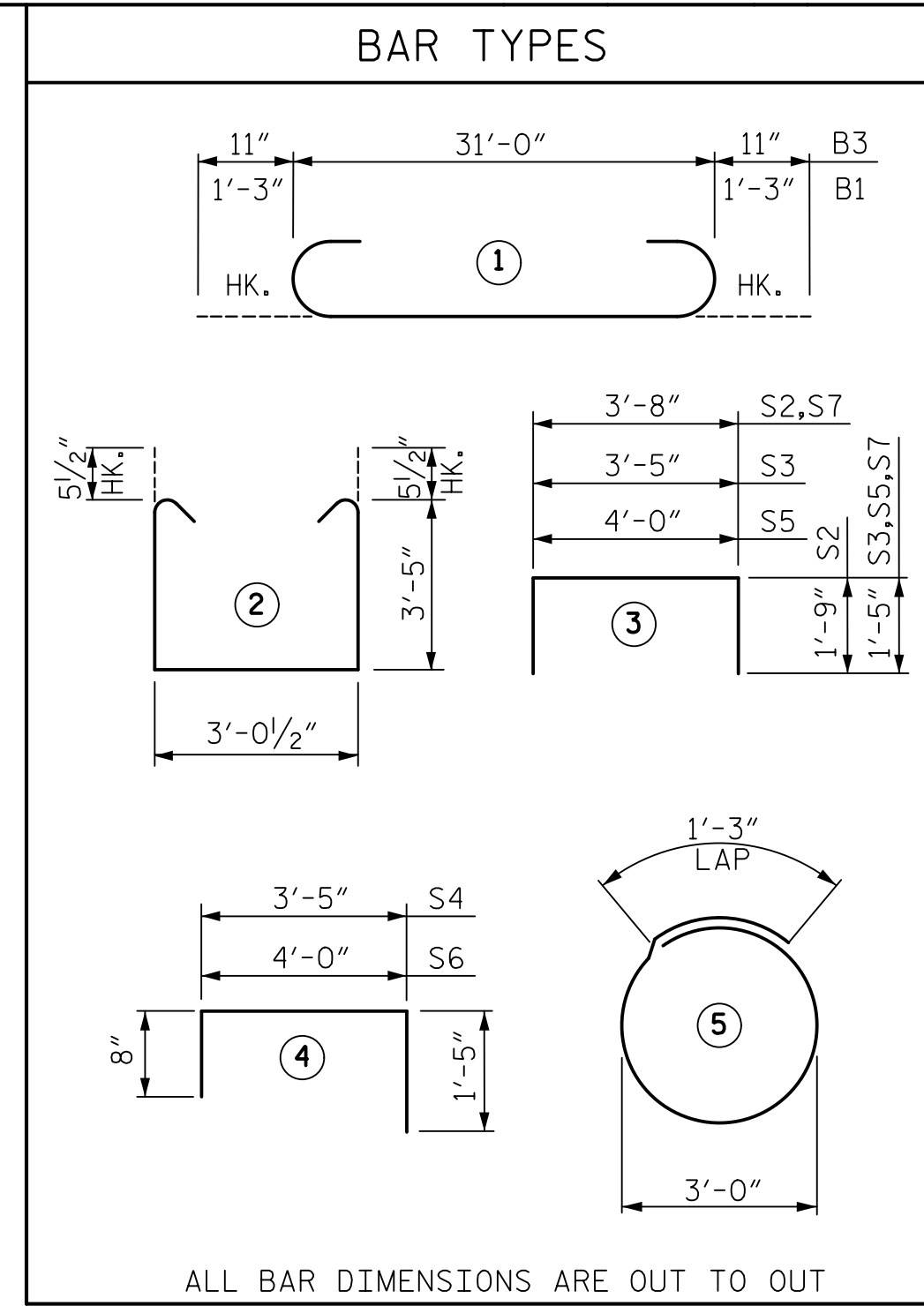


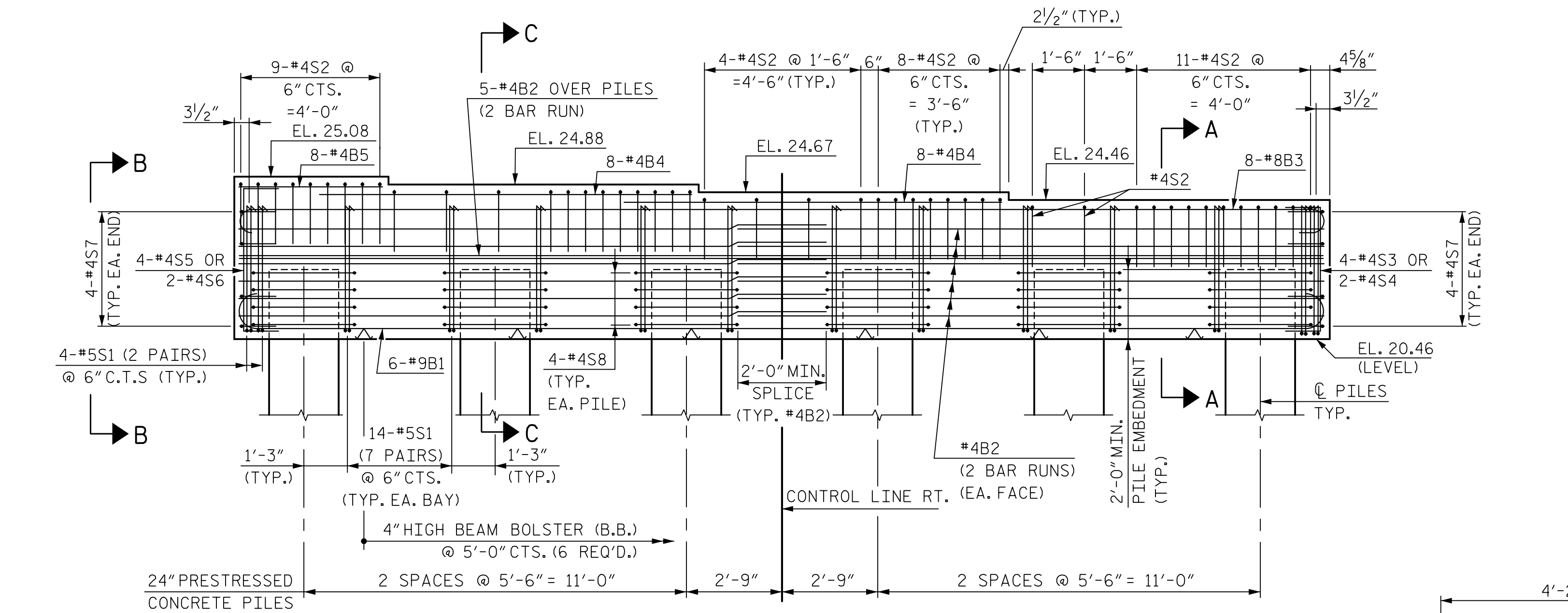
PLAN



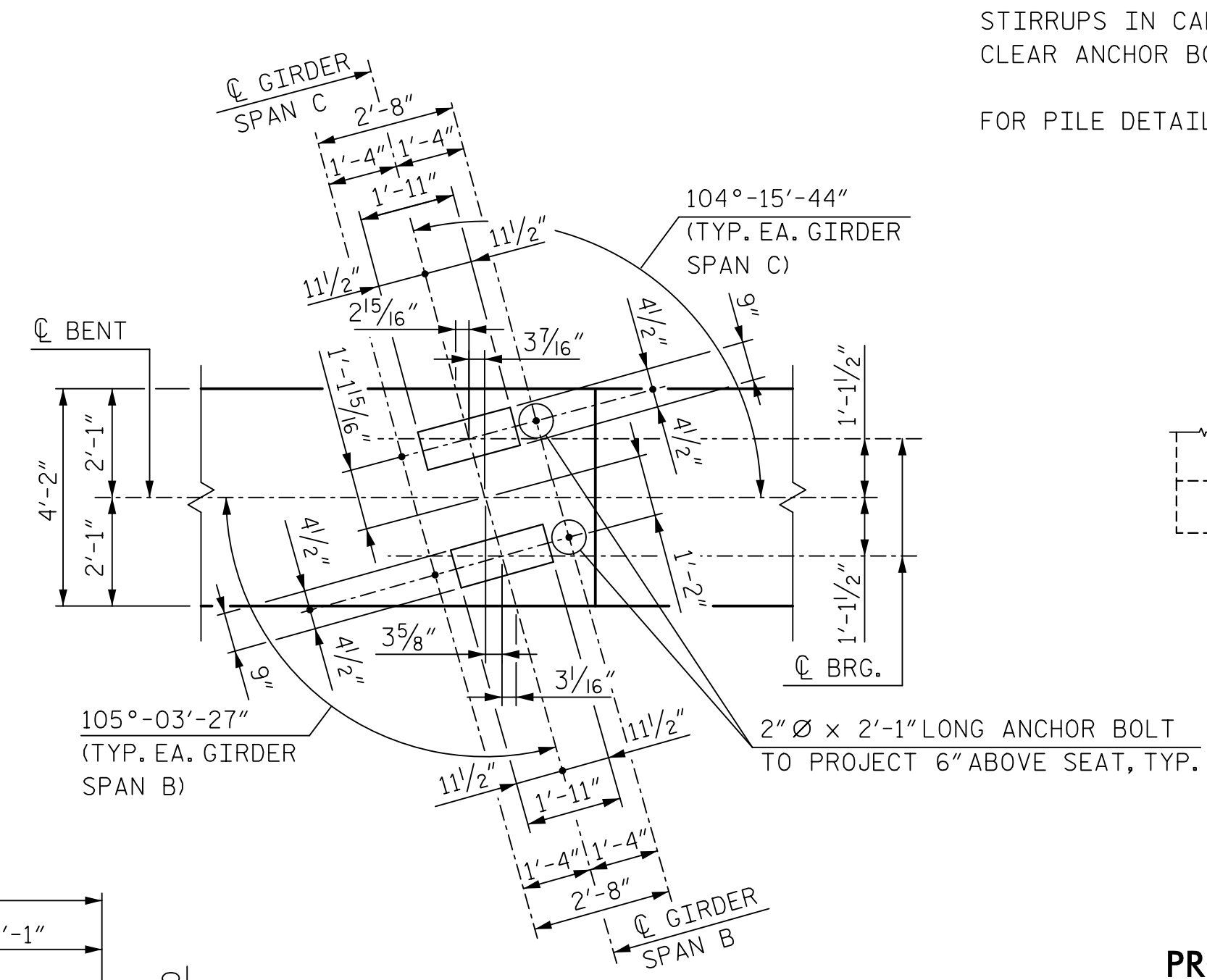
BILL OF REINFORCING					
BENT 2					
BAR	NO.	SIZE	TYPE	LENGTH	WEIGHT
B1	6	9	1	33'-6"	683
B2	34	4	STR.	16'-6"	375
B3	8	8	1	32'-10"	701
B4	16	4	STR.	10'-10"	116
B5	8	4	STR.	4'-1"	22
S1	78	5	2	10'-10"	881
S2	46	4	3	7'-2"	220
S3	4	4	3	6'-3"	17
S4	2	4	4	5'-6"	7
S5	4	4	3	6'-10"	18
S6	2	4	4	6'-1"	8
S7	8	4	3	6'-6"	35
S8	24	4	5	10'-8"	171

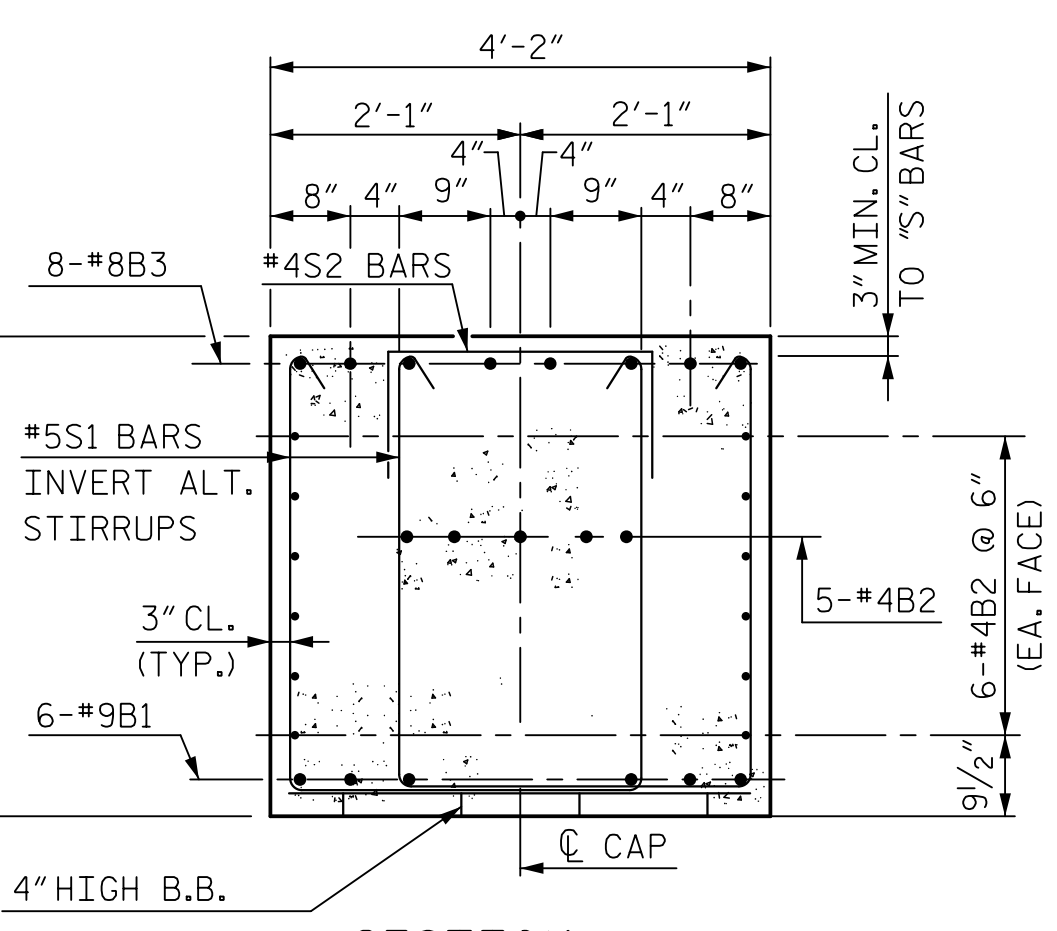
QUANTITIES		
EPOXY COATED REINFORCING STEEL	LBS.	3,254
CLASS AA CONCRETE		
CAP POUR 1	CU. YDS.	18.4
PRESTRESSED CONCRETE PILE	NO.	6
	FEET	630.0



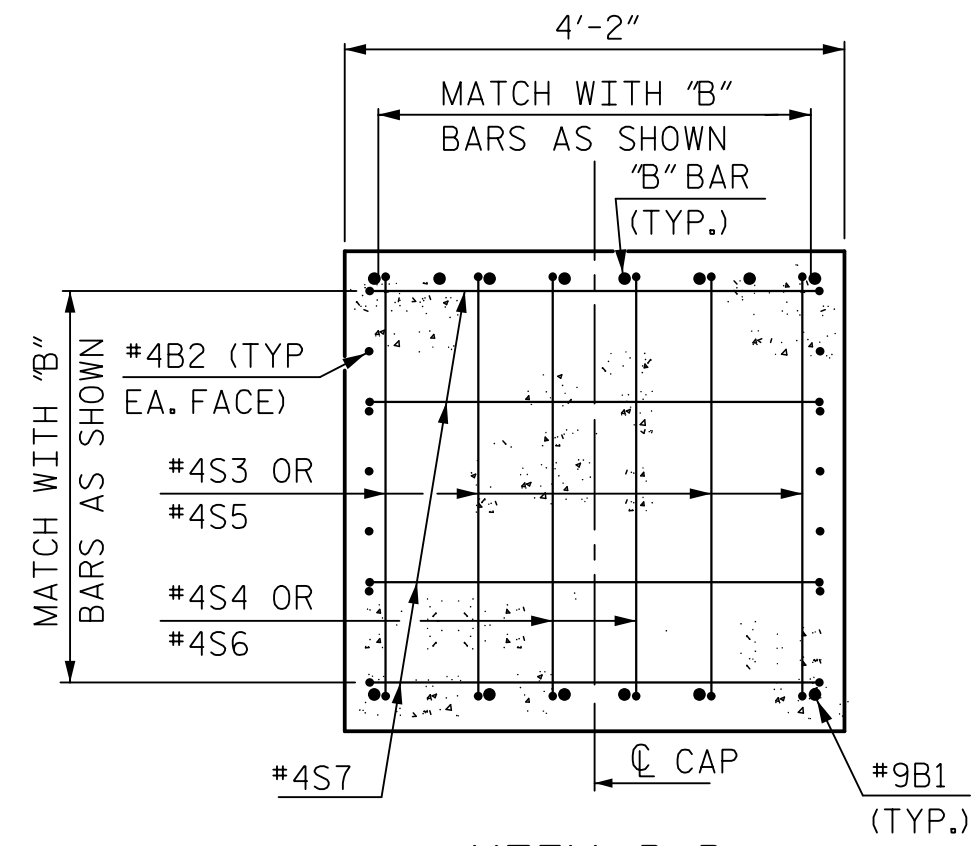
ELEVATION



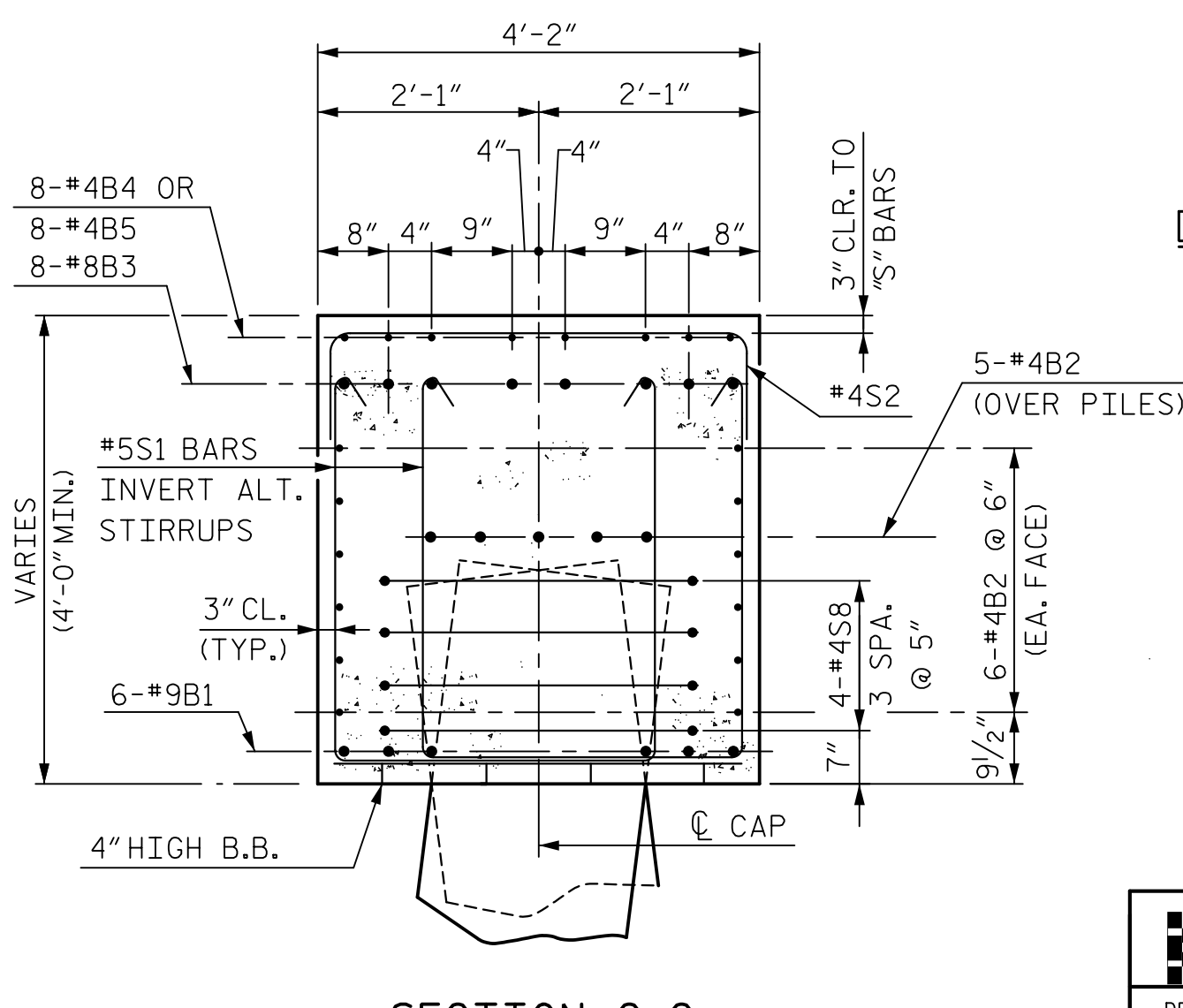
DETAIL A



SECTION A-A



VIEW B-B

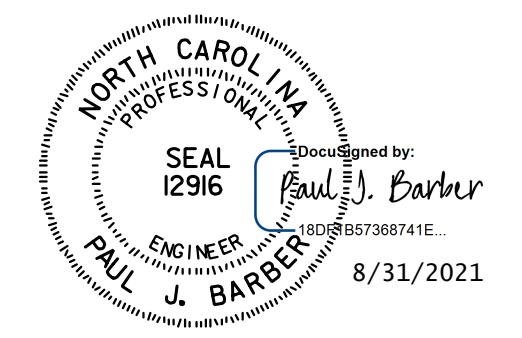


SECTION C-C

**NOTES:**  
 STIRRUPS IN CAP MAY BE SHIFTED AS NECESSARY TO CLEAR ANCHOR BOLTS.  
 FOR PILE DETAILS, SEE SHEET S6-34.

INDICATES 1/2:12 PILE BATTERED IN DIRECTION SHOWN

PROJECT NO. R-5021  
 BRUNSWICK COUNTY  
 STATION: POC 390+15.00 -L-



STATE OF NORTH CAROLINA  
 DEPARTMENT OF TRANSPORTATION  
 RALEIGH  
 SUBSTRUCTURE  
 BENT 2  
 RIGHT LANE

<b>HNTB</b>		HNTB NORTH CAROLINA, P.C. NC License No. C-1554 343 E. Six Forks Rd., Suite 200, Raleigh, N.C. 27609	
DRAWN BY: M. WRIGHT	DATE: 7/21	DWG. NO. 30	SHEET NO. S6-30
CHECKED BY: P. BARBER	DATE: 7/21		
DESIGN ENGINEER OF RECORD: P. BARBER	DATE: 7/21		

REVISIONS					SHEET NO.
NO.	BY	DATE	NO.	DATE	
1			3		S6-30
2			4		