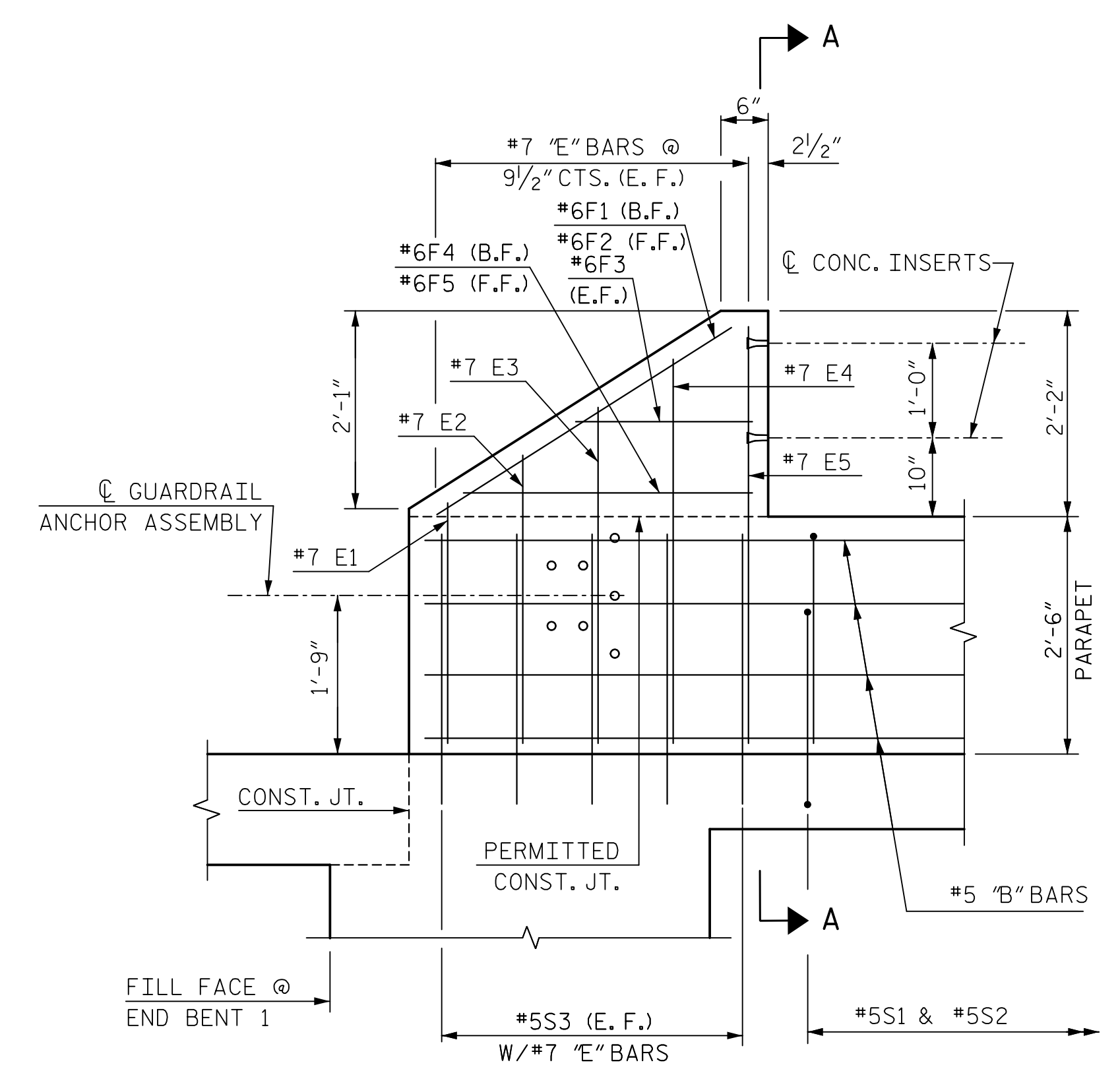
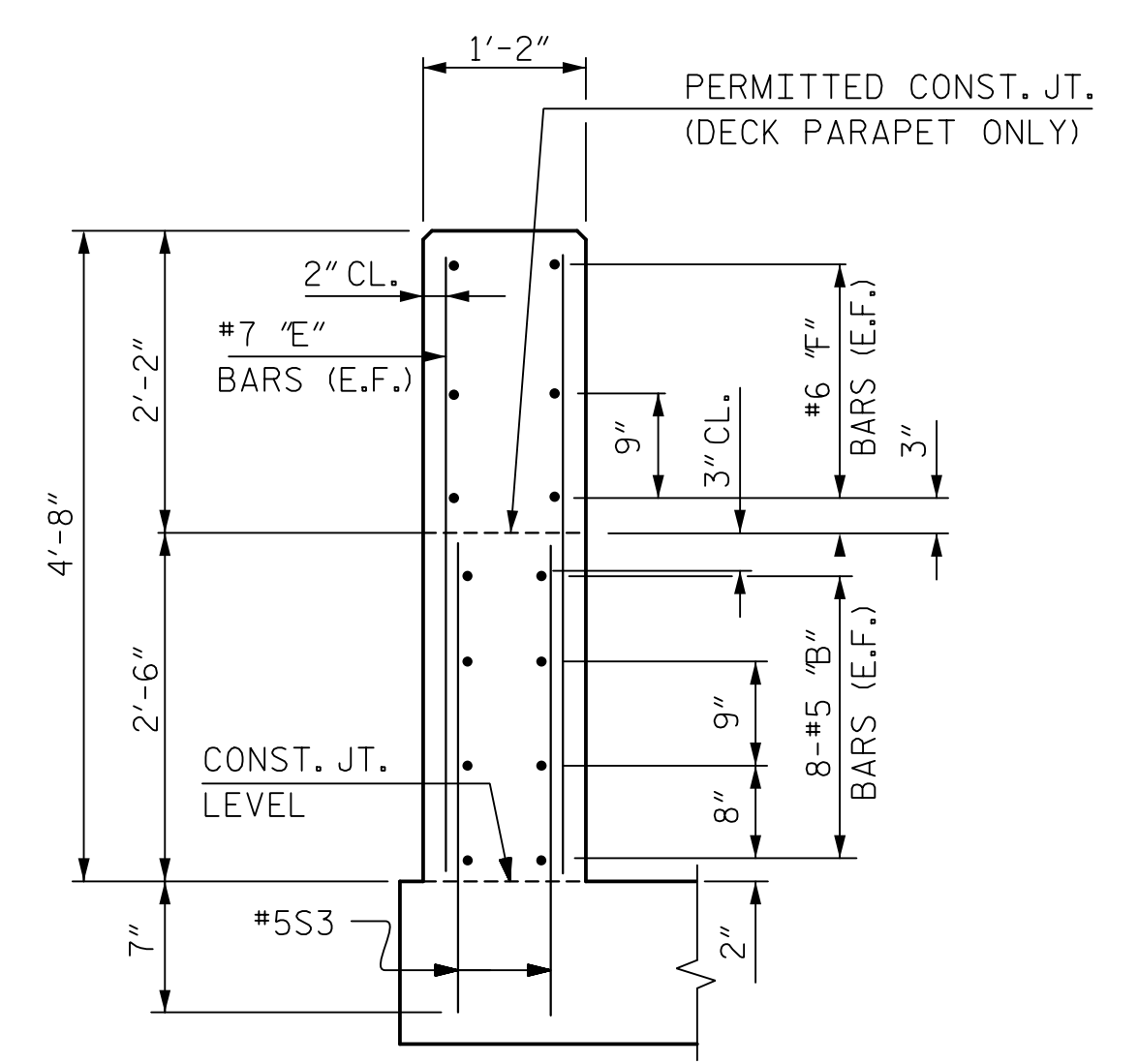


END OF RAIL PLAN  
END BENT 1 SHOWN END BENT 2 SIMILAR



ELEVATION  
END BENT 1 SHOWN END BENT 2 SIMILAR

NOTE: E.F. DENOTES EACH FACE.  
B.F. DENOTES BACK FACE.  
F.F. DENOTES FRONT FACE.

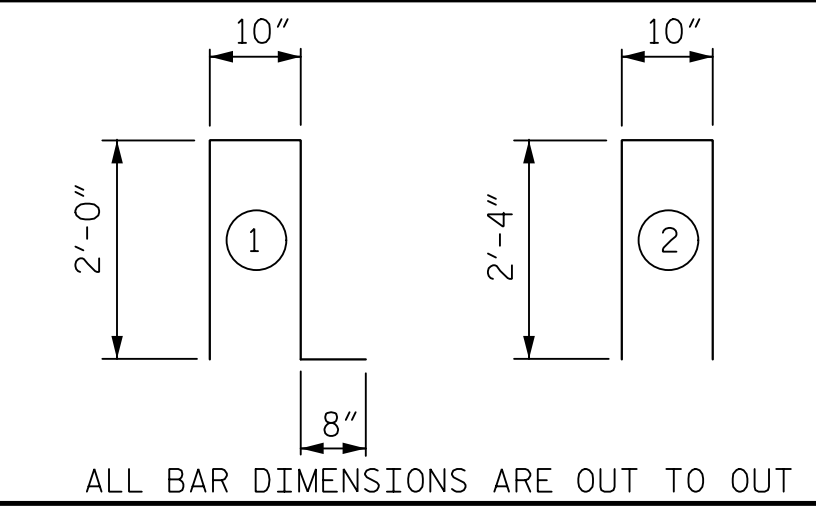


SECTION A-A

BILL OF MATERIAL FOR TWO PARAPETS AND FOUR END POSTS

BAR	NO.	SIZE	TYPE	LENGTH	WEIGHT	BAR	NO.	SIZE	TYPE	LENGTH	WEIGHT
*B1	8	5	STR	25'-11"	216	F1	4	6	STR	3'-8"	22
*B2	32	5	STR	25'-8"	857	F2	4	6	STR	3'-6"	21
*B3	152	5	STR	25'-5"	4,029	F3	8	6	STR	1'-10"	22
						F4	4	6	STR	3'-1"	19
*E1	8	7	STR	2'-7"	42	F5	4	6	STR	3'-3"	20
*E2	8	7	STR	3'-1"	50						
*E3	8	7	STR	3'-7"	59	S1	602	5	1	5'-6"	3,453
*E4	8	7	STR	4'-1"	67	S2	602	5	2	5'-6"	3,453
*E5	8	7	STR	4'-6"	74	S3	40	5	STR	2'-11"	122

BAR TYPES



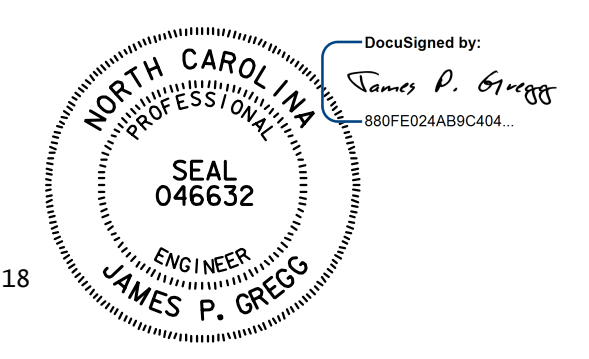
QUANTITIES

EPOXY COATED REINFORCING STEEL	LBS.	12,526
CLASS "AA" CONCRETE	CU. YDS.	67.800
CONCRETE PARAPET	L.F.	619.71

PROJECT NO. R-5021  
BRUNSWICK COUNTY  
 STATION: POC 390+15.00 -L-

SHEET 2 OF 2

STATE OF NORTH CAROLINA  
 DEPARTMENT OF TRANSPORTATION  
 RALEIGH  
 SUPERSTRUCTURE  
 CONCRETE PARAPET AND  
 END POST DETAILS  
 RIGHT LANE



**HNTB** HNTB NORTH CAROLINA, P.C.  
 NC License No. C-1554  
 343 E. Six Forks Rd., Suite 200, Raleigh, N.C. 27609

DRAWN BY: B. NEUPANE DATE: 8/17  
 CHECKED BY: B. EMAMI DATE: 9/17  
 DESIGN ENGINEER OF RECORD: J. GREGG DATE: 8/18

DWG. NO. 20

REVISIONS						SHEET NO.
NO.	BY	DATE	NO.	BY	DATE	S6-20
1			3			TOTAL SHEETS
2			4			39