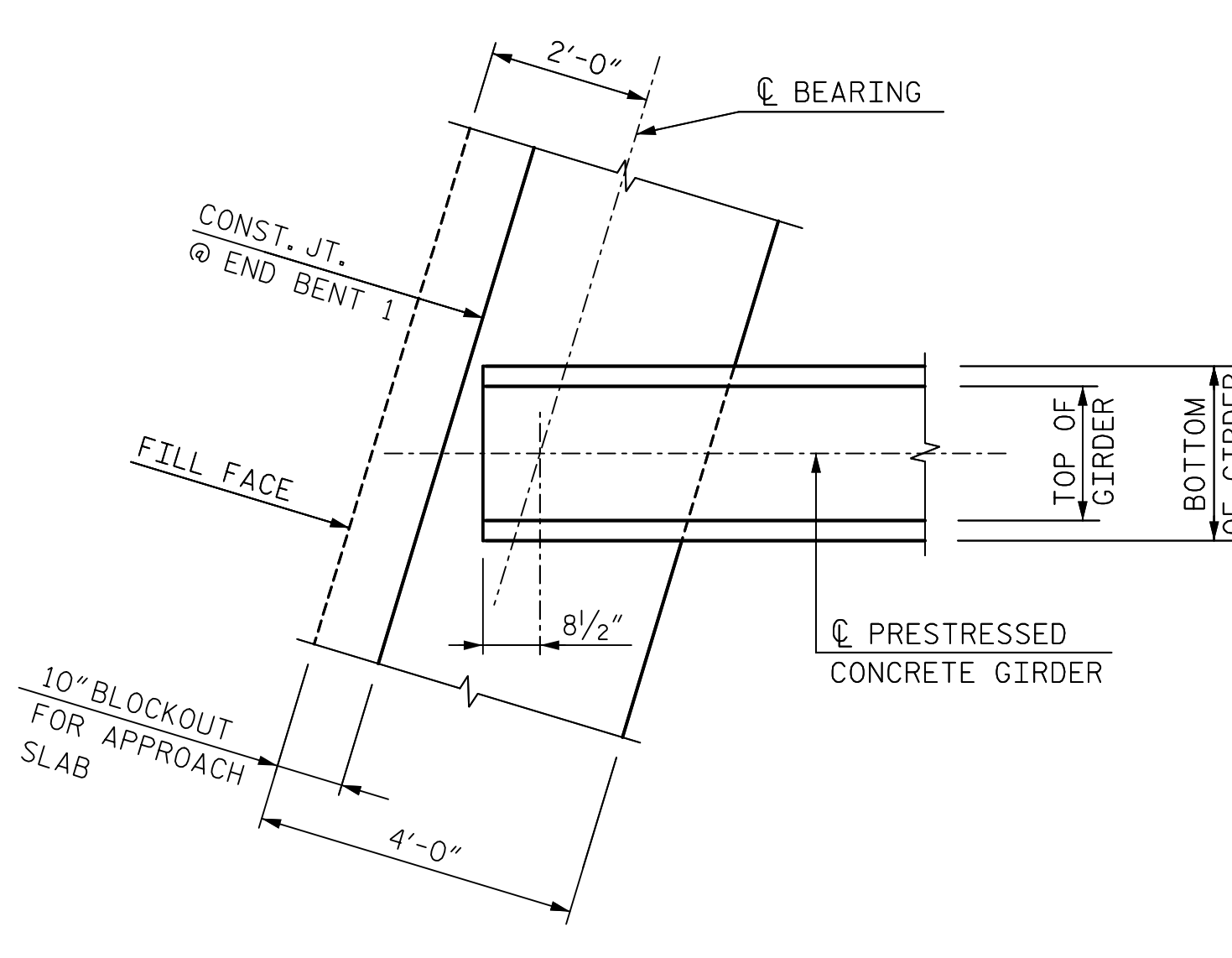
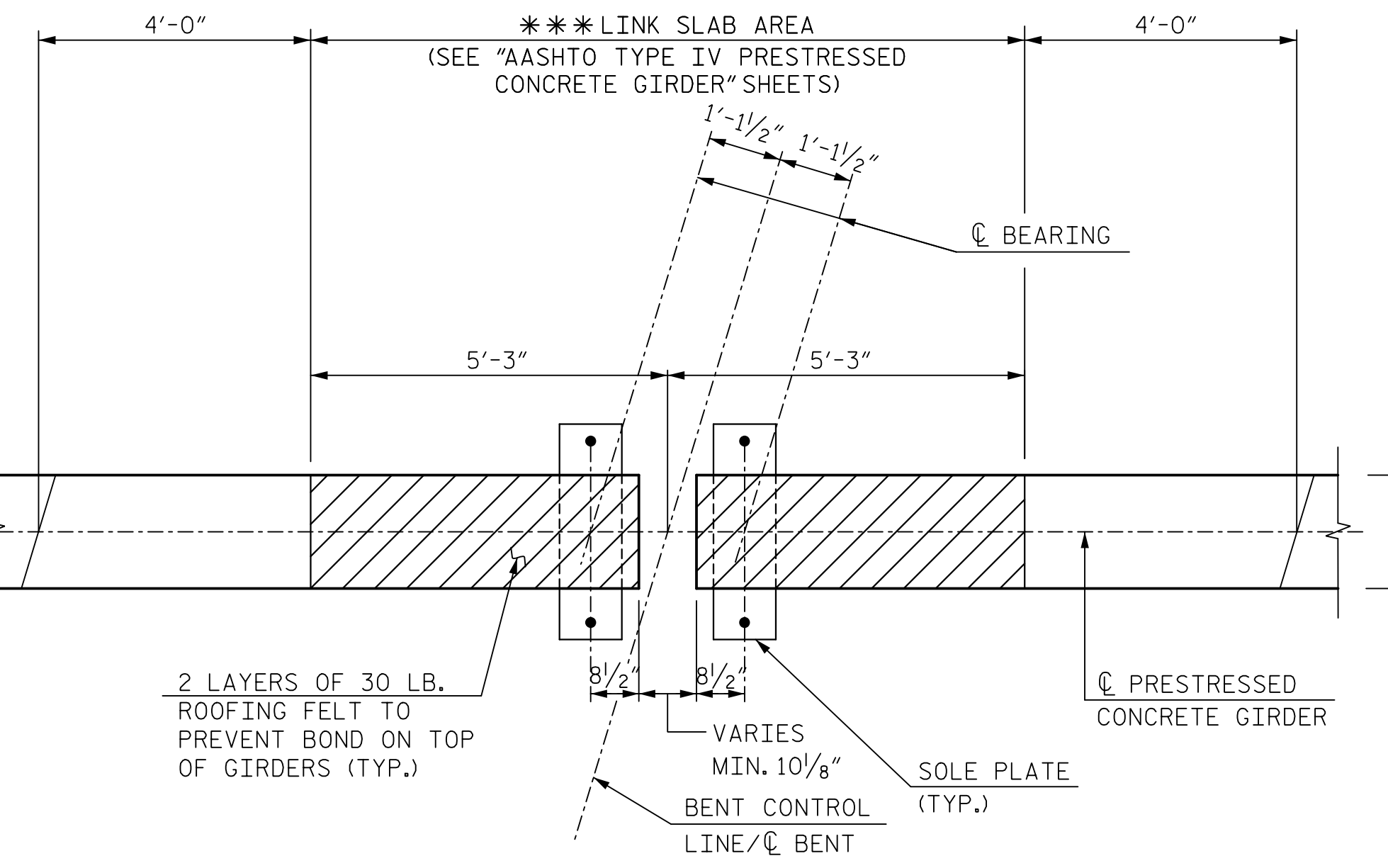


SECTION A-A
(END BENT 1 SHOWN, END BENT 2 SIMILAR)

* THE TOP SURFACE OF THE END BENT CAP EXCLUDING THE BEARING AREA SHALL BE RAKED TO A DEPTH OF 1/4".

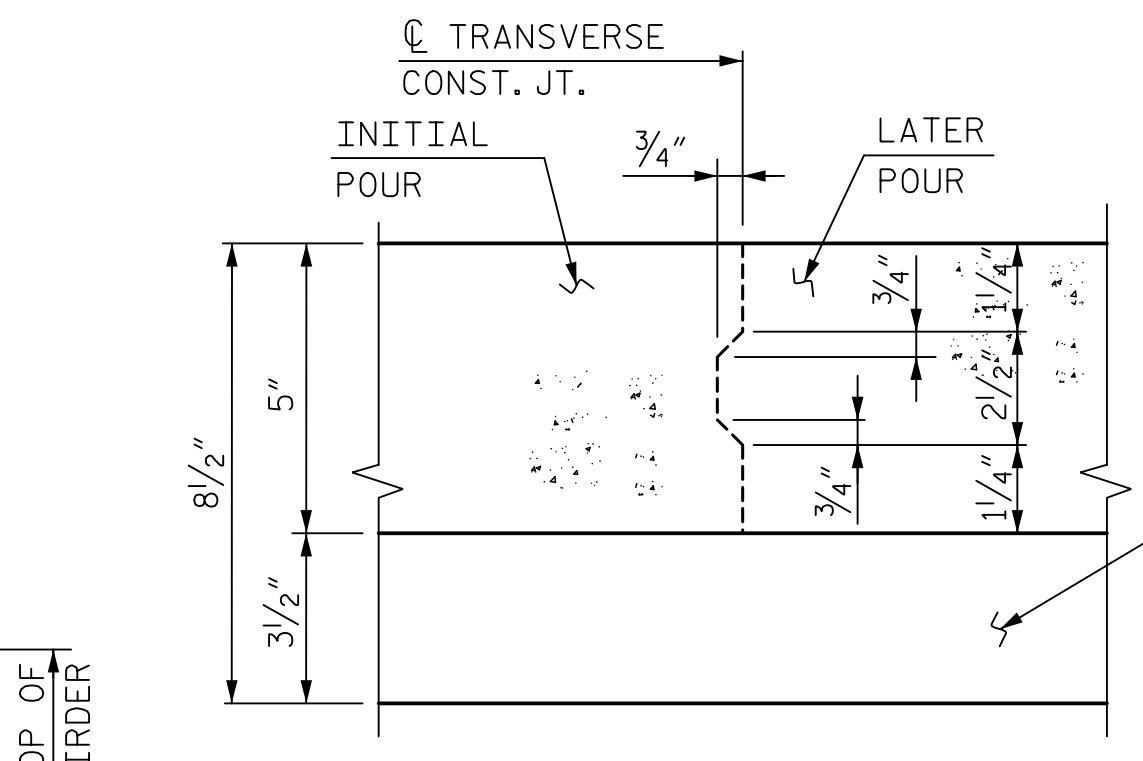


PLAN OF GIRDER AT INTEGRAL END BENT 1
(END BENT 2 SIMILAR)



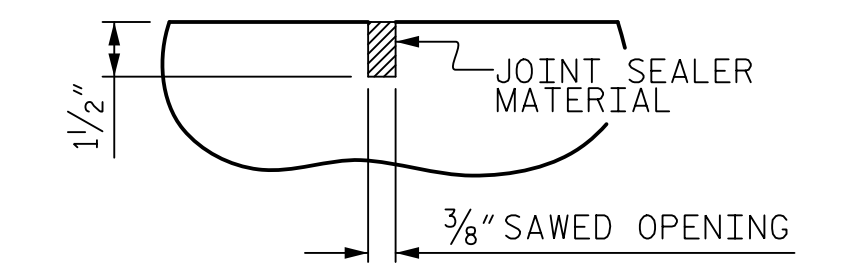
PLAN @ BENT

*** THE TOP OF GIRDER IN THE LINK SLAB AREA SHALL BE SMOOTH (NOT RAKED) AND FREE OF STIRRUPS, DECK FORMWORK ATTACHMENTS, AND OVERHANG FALSEWORK/FORMWORK ATTACHMENTS.



TRANSVERSE CONSTRUCTION JOINT DETAIL

REINFORCING STEEL IN SLAB NOT SHOWN. LONGITUDINAL REINFORCING STEEL SHALL BE CONTINUOUS THROUGH JOINT.



DETAIL "B"

A 1/2" DEEP 3/8" WIDE CONTRACTION JOINT AT THE BENT CONTROL LINE SHALL BE SAWN WITHIN 24 HOURS OF POURING THE LINK SLAB. THE JOINT SHALL BE FILLED WITH JOINT SEALER MATERIAL. THE JOINT SEALER MATERIAL SHALL CONFORM TO THE REQUIREMENTS OF SECTION 1028-3 OF THE STANDARD SPECIFICATIONS.

PROJECT NO. R-5021
BRUNSWICK COUNTY
STATION: POC 390+15.00 -L-

SHEET 2 OF 2

STATE OF NORTH CAROLINA
DEPARTMENT OF TRANSPORTATION
RALEIGH
SUPERSTRUCTURE
TYPICAL SECTIONS
RIGHT LANE

HNTB HNTB NORTH CAROLINA, P.C.
NC License No. C-1554
343 E. Six Forks Rd., Suite 200, Raleigh, N.C. 27609

DESIGNED BY: M. WRIGHT DATE: 7/21
CHECKED BY: P. BARBER DATE: 7/21
DESIGN ENGINEER OF RECORD: P. BARBER DATE: 7/21

Doc. Designed by: **PAUL J. BARBER**
SEAL 12916
ENGINEER
11057388741E
8/31/2021

DWG. NO. 7

REVISIONS						SHEET NO. S6-7
NO.	BY	DATE	NO.	BY	DATE	
1			3			TOTAL SHEETS 39
2			4			