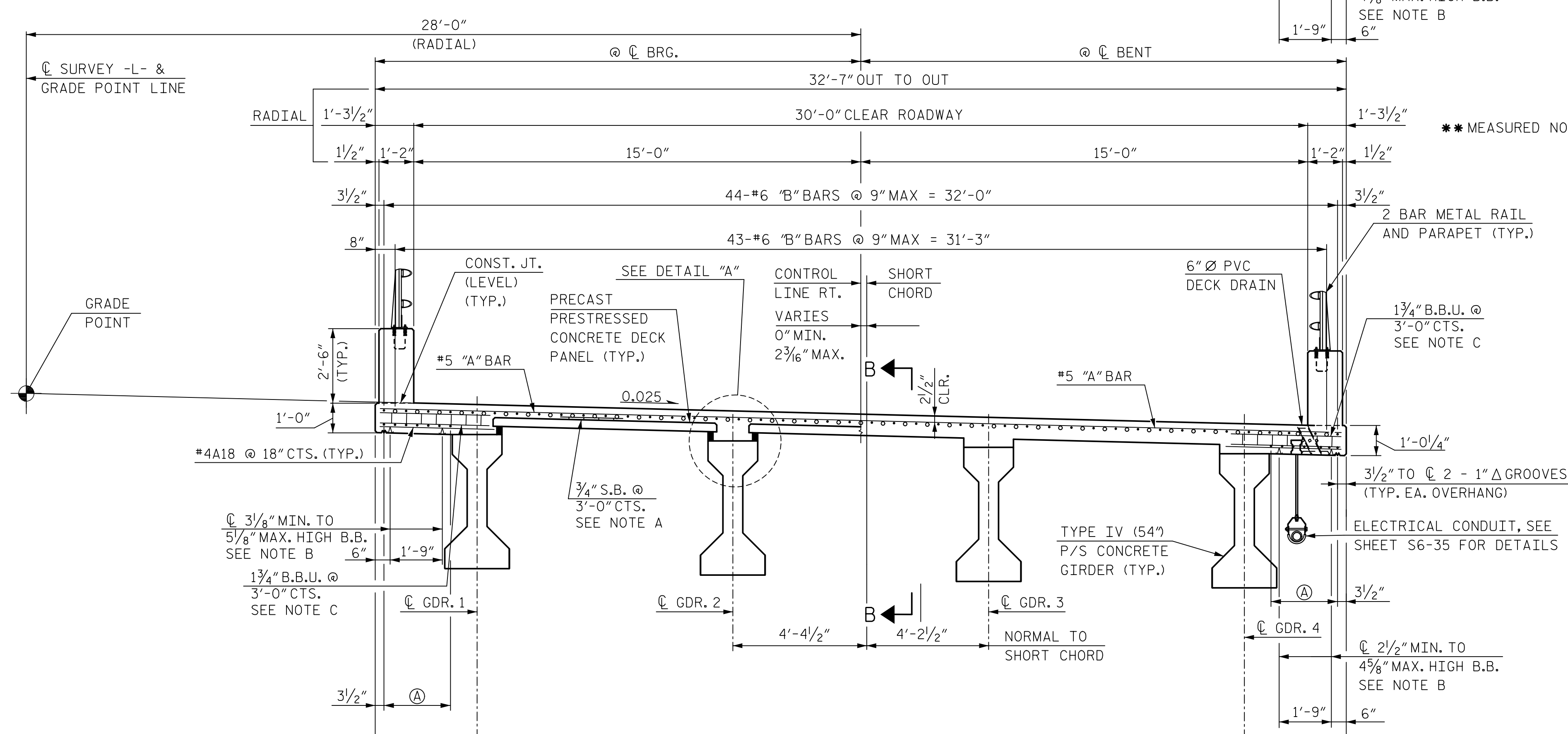
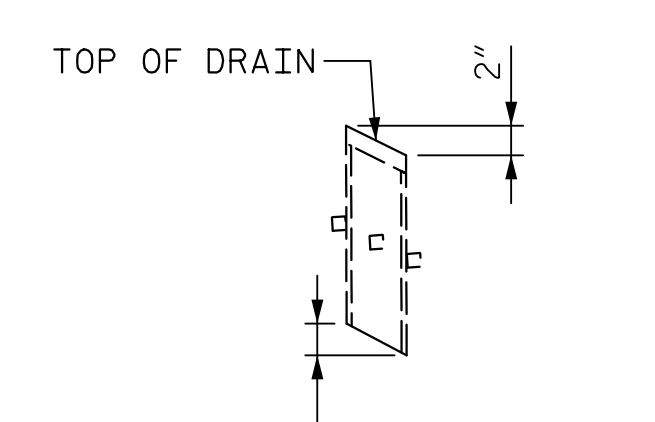
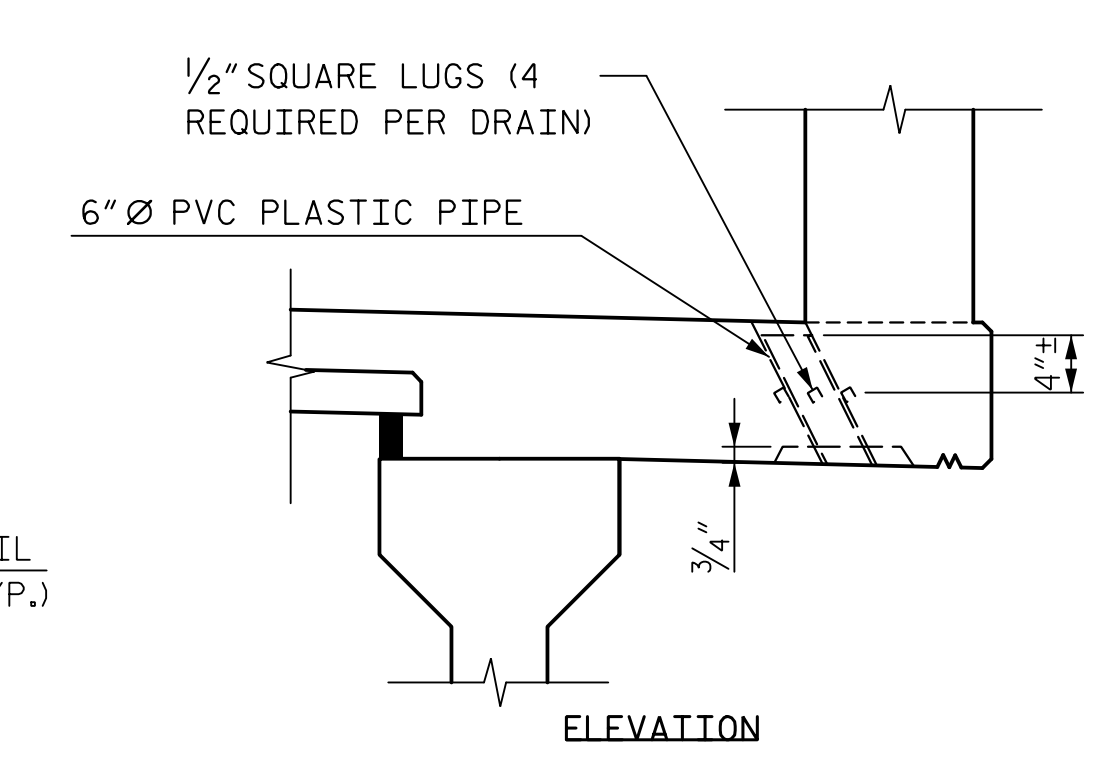


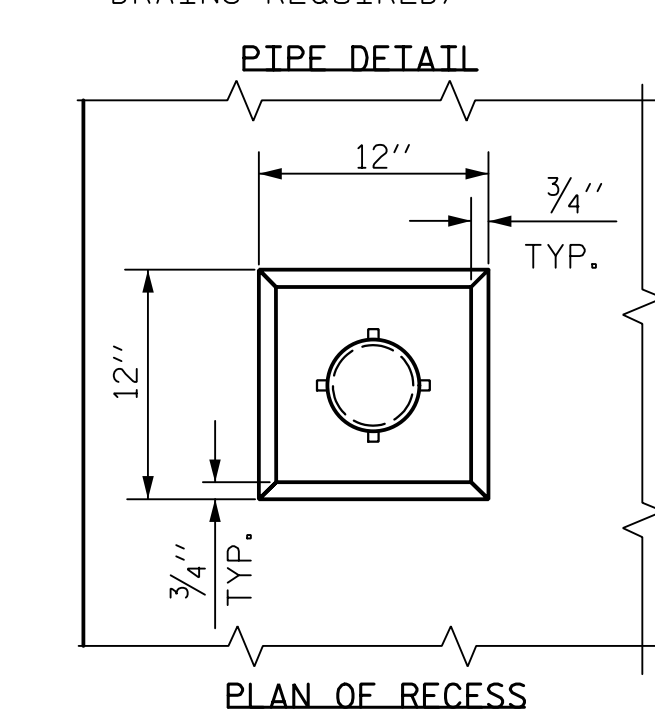
**TYPICAL SECTION AT INTEGRAL END BENT**  
FOR SECTION THRU END BENT, SEE SECTION A-A, SHEET 2 OF 2



**TYPICAL SECTION AT BENT**  
FOR SECTION THRU BENT, SEE SECTION B-B, SHEET 2 OF 2

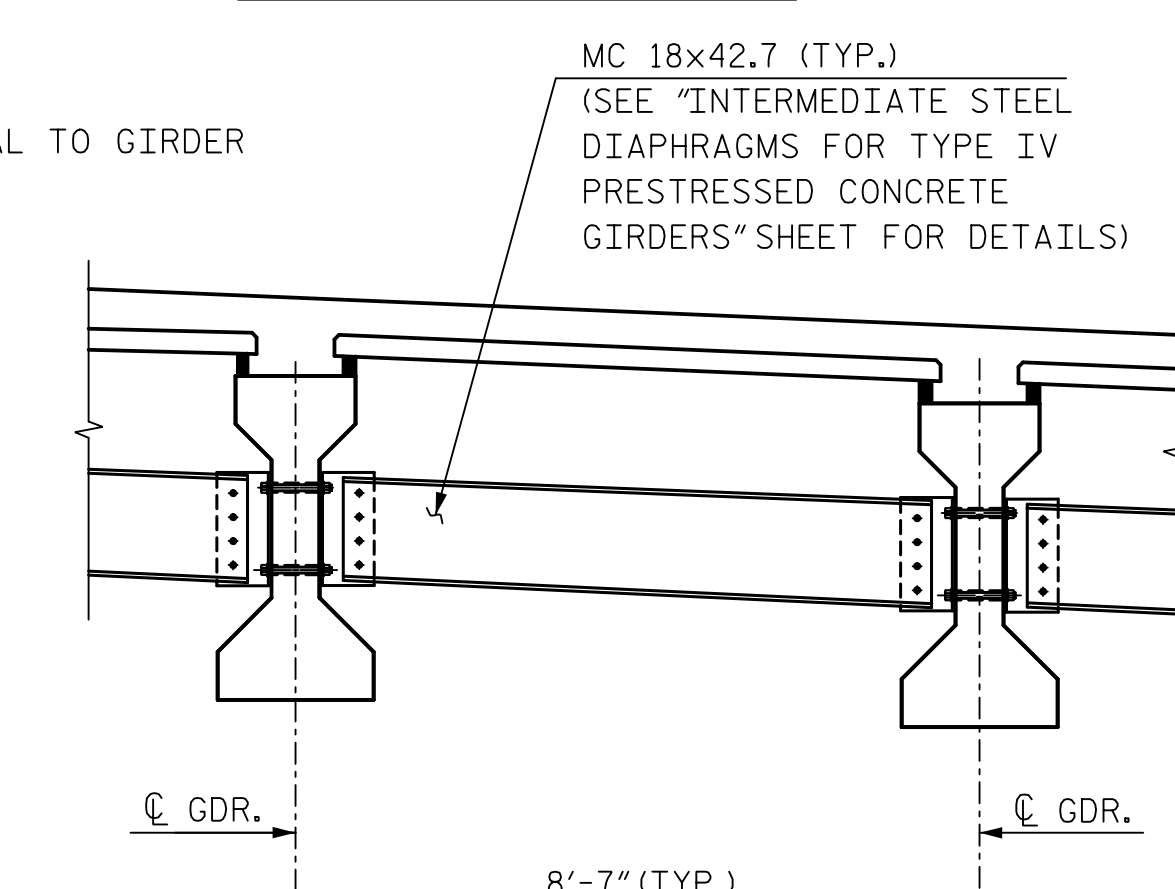


\* TO BE SET TO MATCH SLOPE OF BOTTOM OF OVERHANG (60 DRAINS REQUIRED)



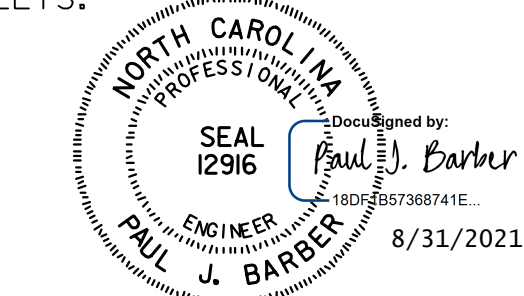
**PIPE DETAIL**

**DECK DRAIN DETAILS**



**PARTIAL TYPICAL SECTION**  
(SHOWING INTERMEDIATE DIAPHRAGM)

**'B' BAR KEY:**  
• = CONTINUOUS BAR RUN  
◦ = NON CONTINUOUS BAR RUN  
SEE PLAN OF SPAN SHEETS.

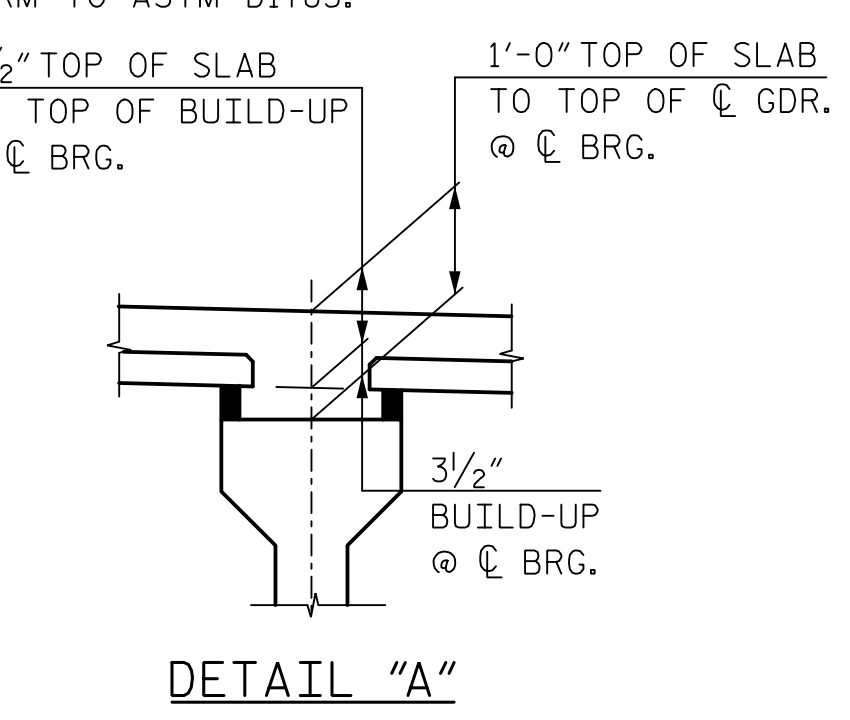


**NOTES**

- LONGITUDINAL STEEL MAY BE SHIFTED SLIGHTLY, AS NECESSARY, TO AVOID INTERFERENCE WITH STIRRUPS IN PRESTRESSED CONCRETE GIRDERS.
- PREVIOUSLY CAST CONCRETE IN A CONTINUOUS UNIT SHALL HAVE ATTAINED A MINIMUM COMPRESSIVE STRENGTH OF 3,000 PSI BEFORE ADDITIONAL CONCRETE IS CAST IN THE UNIT.
- PARAPET RAIL IN A CONTINUOUS UNIT SHALL NOT BE CAST UNTIL ALL SLAB CONCRETE IN THAT UNIT HAS BEEN CAST AND HAS REACHED A MINIMUM COMPRESSIVE STRENGTH OF 3,000 PSI.
- NO CHAMFER IS REQUIRED ON CORNERS OF GIRDER BUILD-UPS.
- THE SKEWED END CONDITIONS OF END BENTS AND BENTS ARE SUCH THAT THE USE OF 4' WIDE PRESTRESSED CONCRETE DECK PANELS IS NOT POSSIBLE; USE OF 8' WIDE PRESTRESSED CONCRETE DECK PANELS IS NECESSARY.
- NOTE A: TO MAINTAIN PROPER LOCATION OF "A" BARS IN THE TOP OF SLAB, SB DEPTH MUST VARY IN UNIT AS THE MAXIMUM SIZE OF THE "B" BARS IN THE TOP OF THE SLAB VARIES. A 1/4" SB SHALL BE USED WHERE ONLY #4 "B" BARS ARE PRESENT. WHERE #6 "B" BARS ARE PRESENT, A 3/4" SB SHALL BE USED.
- NOTE B: THE HEIGHT OF THE BEAM BOLSTER VARIES ALONG THE LENGTH OF THE SPAN DUE TO CAMBER AND THE VARYING HEIGHT REQUIRED FOR THE BUILDUP. THE CONTRACTOR SHALL HAVE SUFFICIENT SIZES TO PROPERLY SUPPORT THE REINFORCING STEEL.
- NOTE C: TO MAINTAIN PROPER LOCATION OF "A" BARS IN THE TOP OF SLAB, BBU DEPTH MUST VARY IN UNIT AS THE MAXIMUM SIZE OF THE "B" BARS IN THE TOP OF THE SLAB VARIES. A 2/4" BBU SHALL BE USED WHERE ONLY #4 "B" BARS ARE PRESENT. WHERE #6 "B" BARS ARE PRESENT, A 1 3/4" BBU SHALL BE USED.

**DECK DRAIN NOTES**

- TOP OF FLOOR DRAIN TO BE SET 3/8" BELOW SURFACE OF SLAB.
- 4 - 1/2" SQUARE LUGS TO BE GLUED TO THE PVC PLASTIC PIPE AT EQUAL SPACES AROUND THE PIPE DRAIN APPROXIMATELY 4" FROM THE TOP OF THE PIPE.
- THE 6" Ø PVC PLASTIC PIPE AND FITTINGS SHALL BE SCHEDULE 40 AND CONFORM TO ASTM D1785.



**PROJECT NO.** R-5021  
**BUNSWICK COUNTY**  
**STATION:** POC 390+15.00 -L-

SHEET 1 OF 2  
STATE OF NORTH CAROLINA  
DEPARTMENT OF TRANSPORTATION  
RALEIGH  
**SUPERSTRUCTURE**  
TYPICAL SECTION  
RIGHT LANE

<b>HNTB</b>		HNTB NORTH CAROLINA, P.C. NC License No. C-1554 343 E. Six Forks Rd., Suite 200, Raleigh, N.C. 27609	
DRAWN BY: M. WRIGHT	DATE: 7/21	CHECKED BY: P. BARBER	DATE: 7/21
DESIGN ENGINEER OF RECORD: P. BARBER	DATE: 7/21	DATE: 7/21	DATE: 7/21

REVISIONS					
NO.	BY	DATE	NO.	BY	DATE
1			3		
2			4		

SHEET NO. S6-6  
TOTAL SHEETS 39