

**NOTES**

THE CONTRACTOR SHALL BE RESPONSIBLE FOR DETERMINING THE TOTAL QUANTITY OF CONDUIT NEEDED TO COMPLETE THE WORK AND THAT THE CONDUIT(S) ARE PLACED AT THE NOTED DIMENSION AND ABOVE THE BOTTOM OF THE GIRDER.

THE INSTALLATION OF THE CONDUIT SYSTEM SHALL BE PAID FOR AS LUMP SUM. THE PRICE SHALL INCLUDE ALL CONDUIT, HANGERS, STABILIZERS, EXPANSION JOINTS, CONCRETE INSERTS, PVC SLEEVES AND ALL NECESSARY HARDWARE TO COMPLETE THE WORK.

THE CONTRACTOR SHALL FIELD VERIFY THAT THE CONDUIT SYSTEM IS NOT IN CONFLICT WITH THE GUARDRAIL POSTS.

SEE DETAIL "C" FOR HANGER ASSEMBLY INSTALLATION.

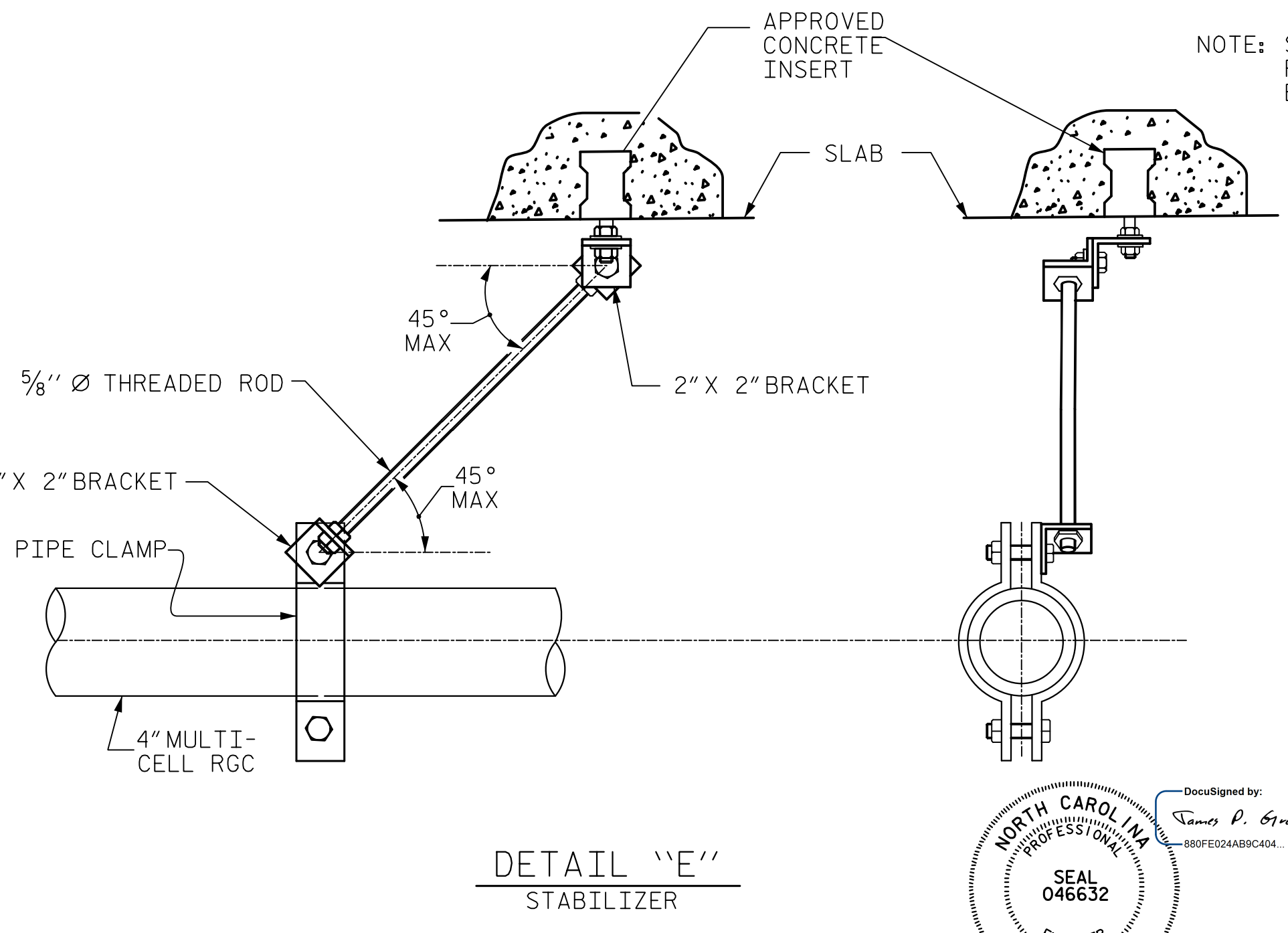
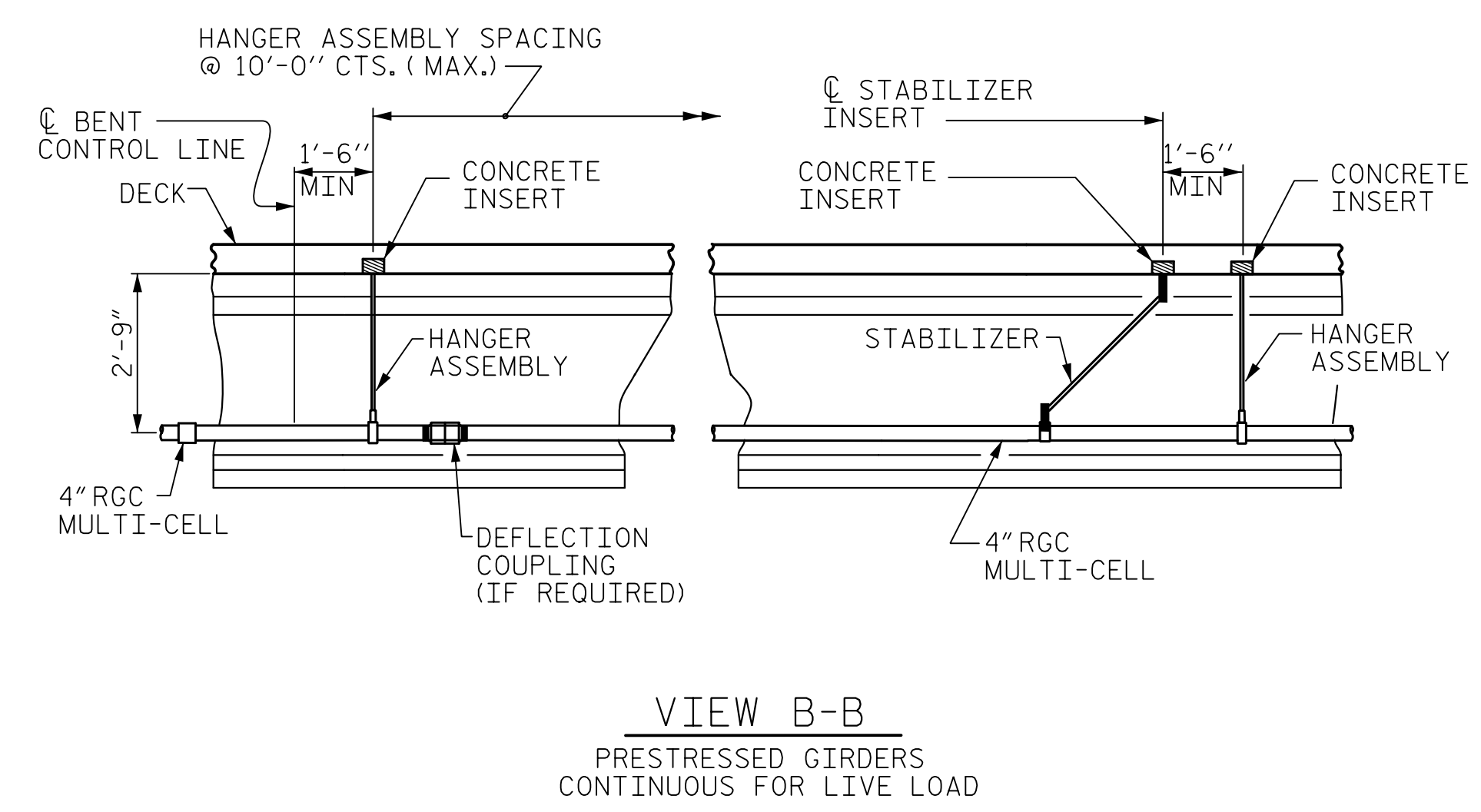
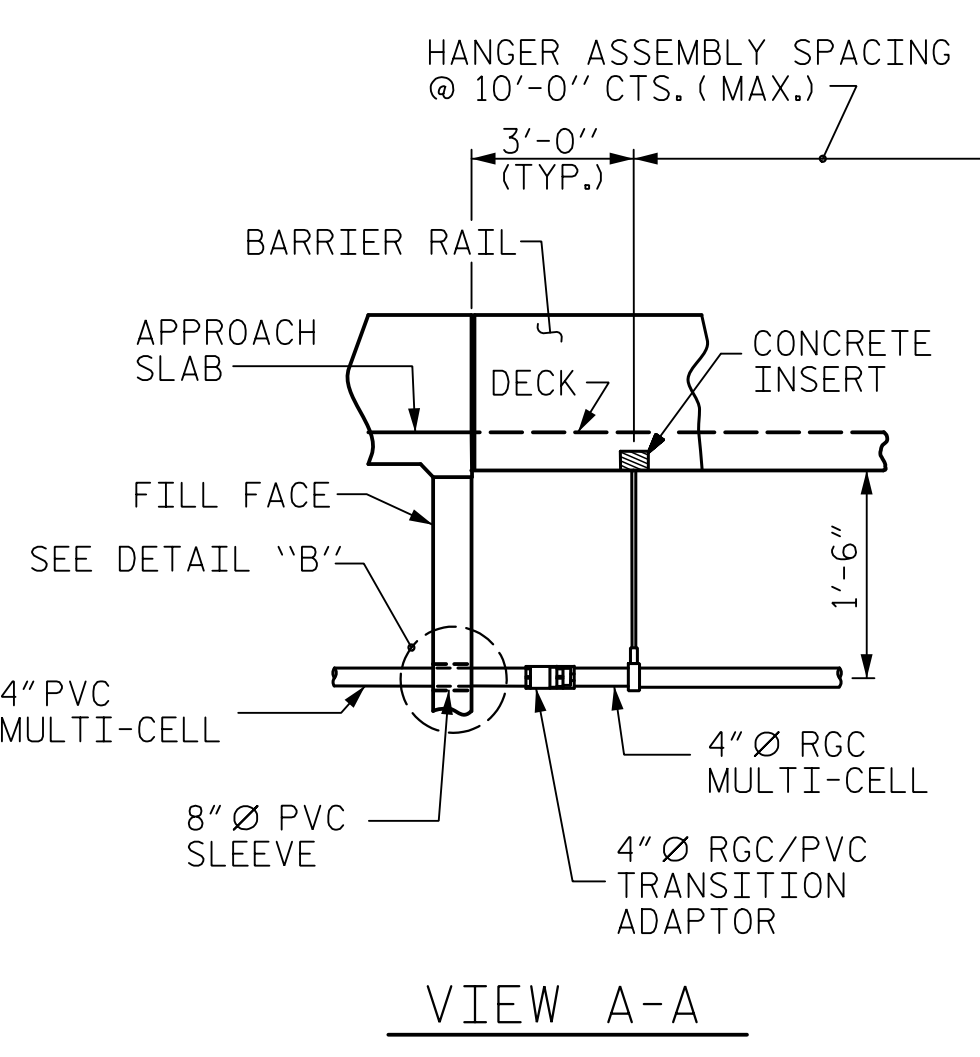
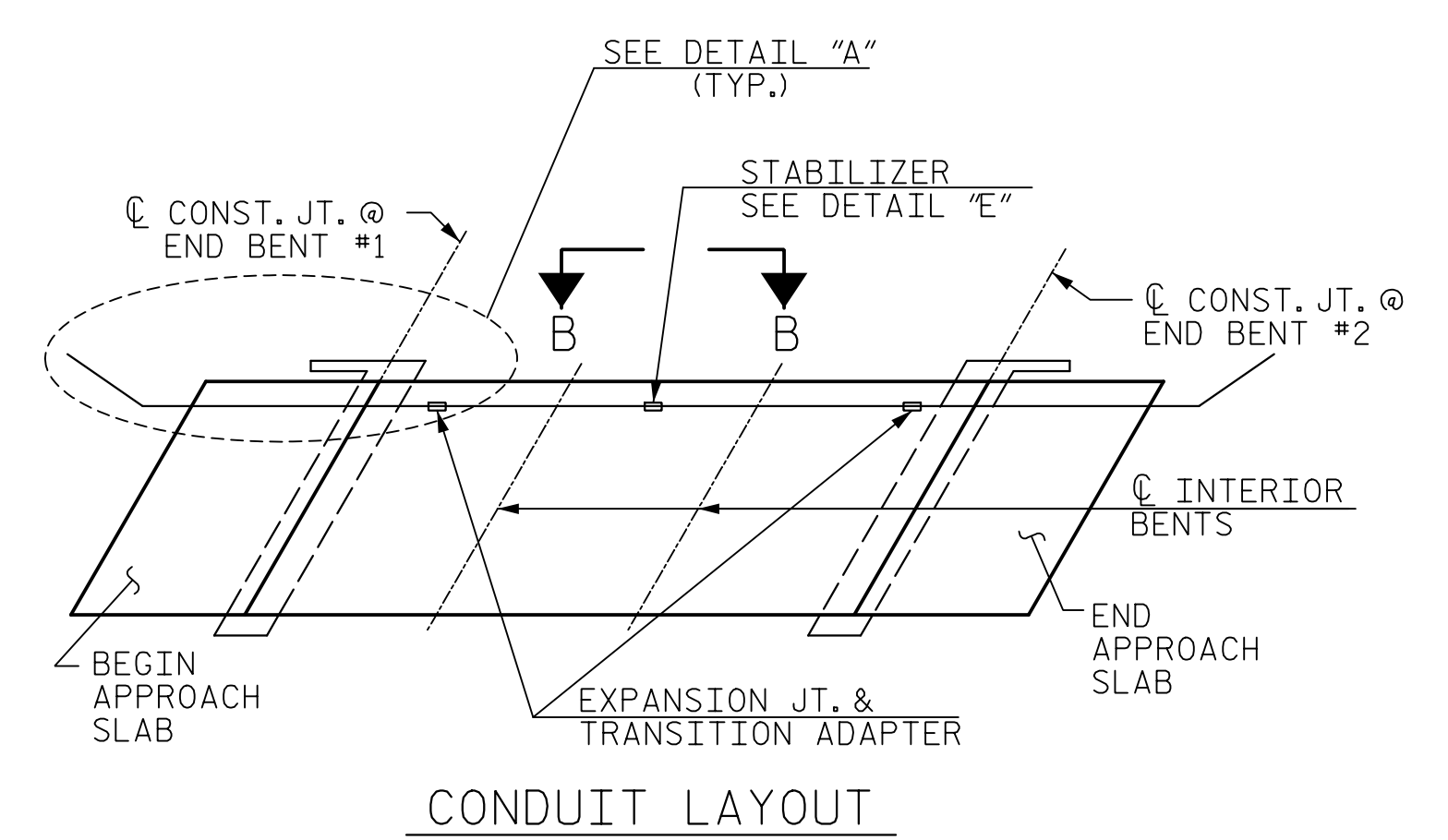
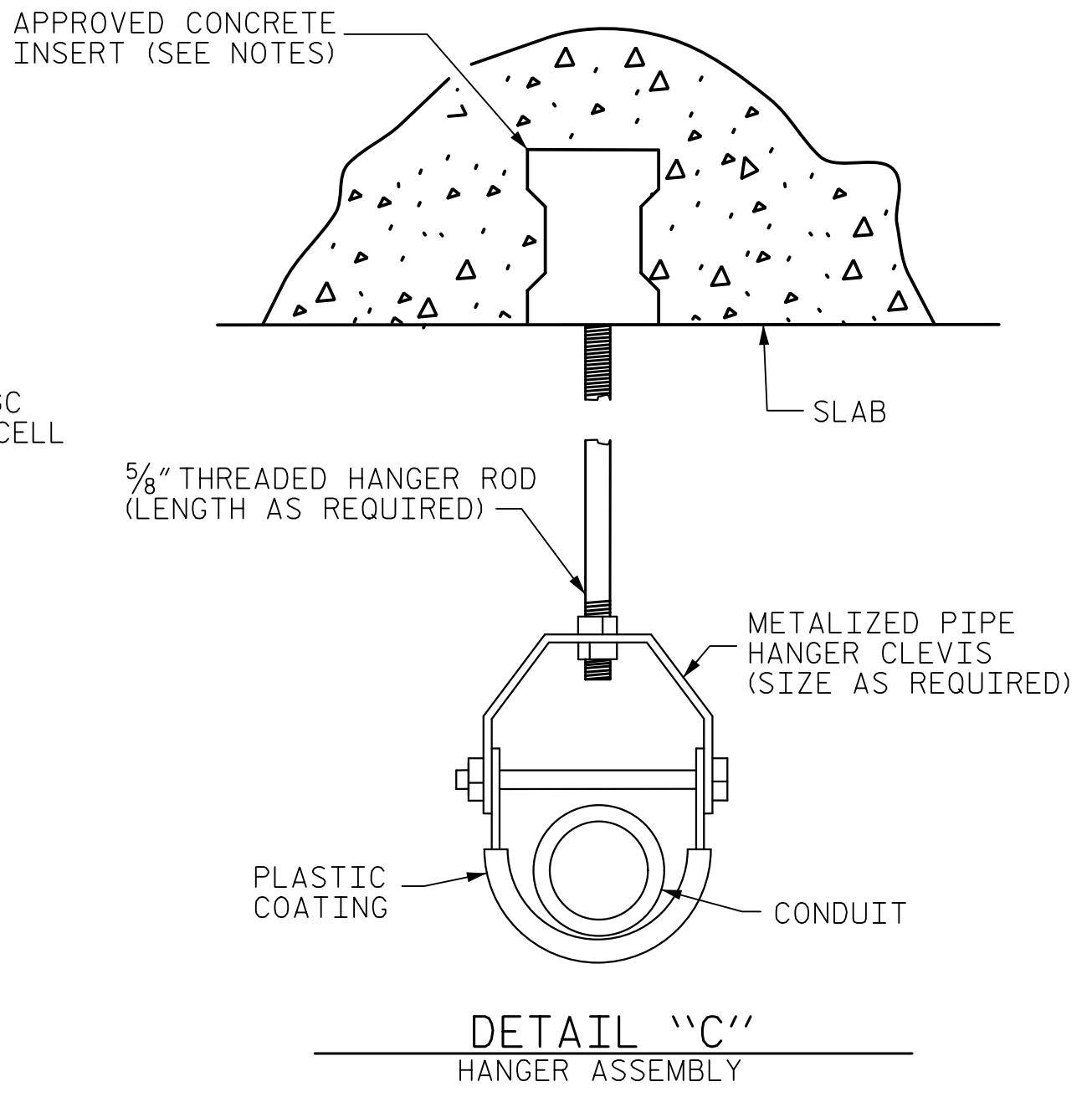
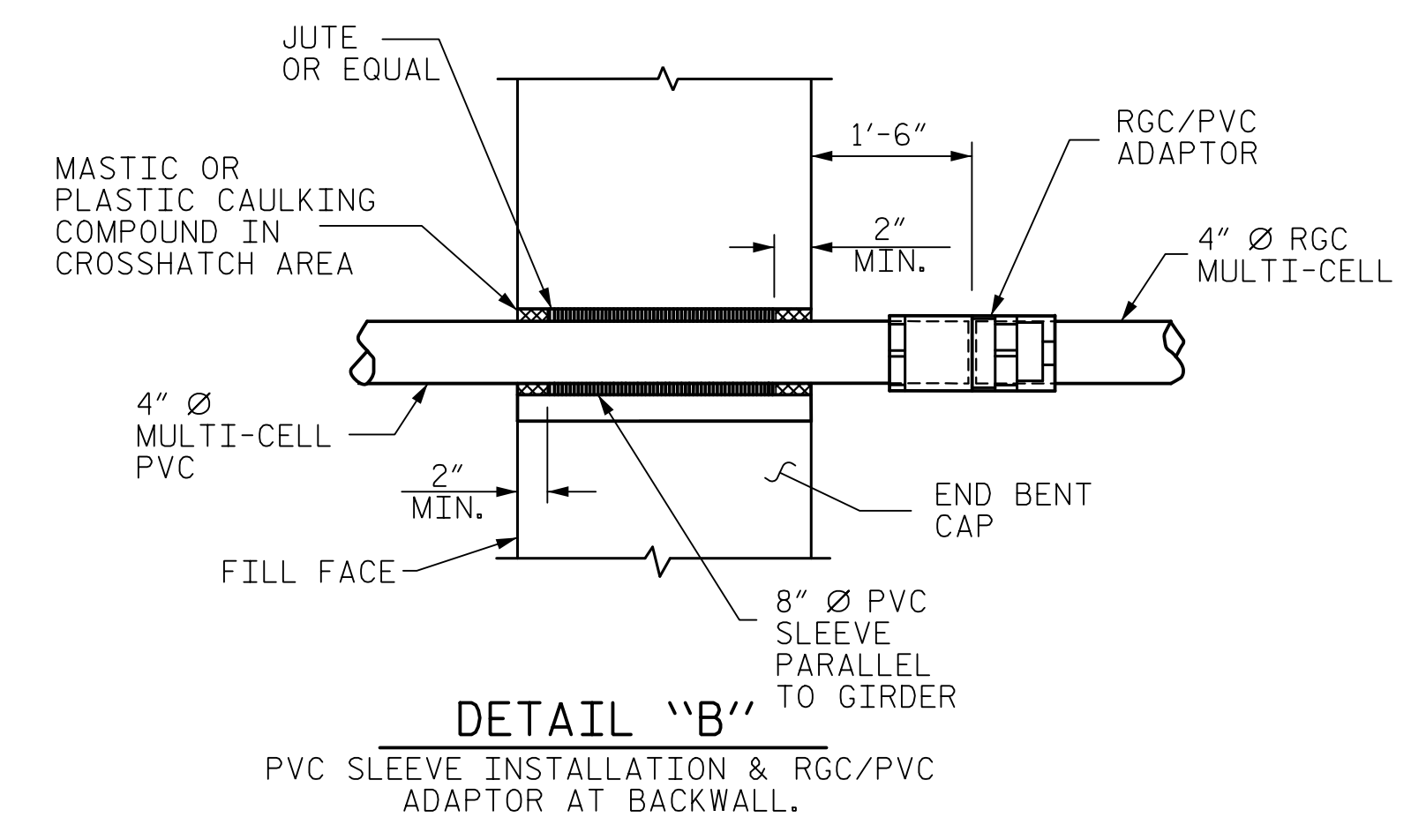
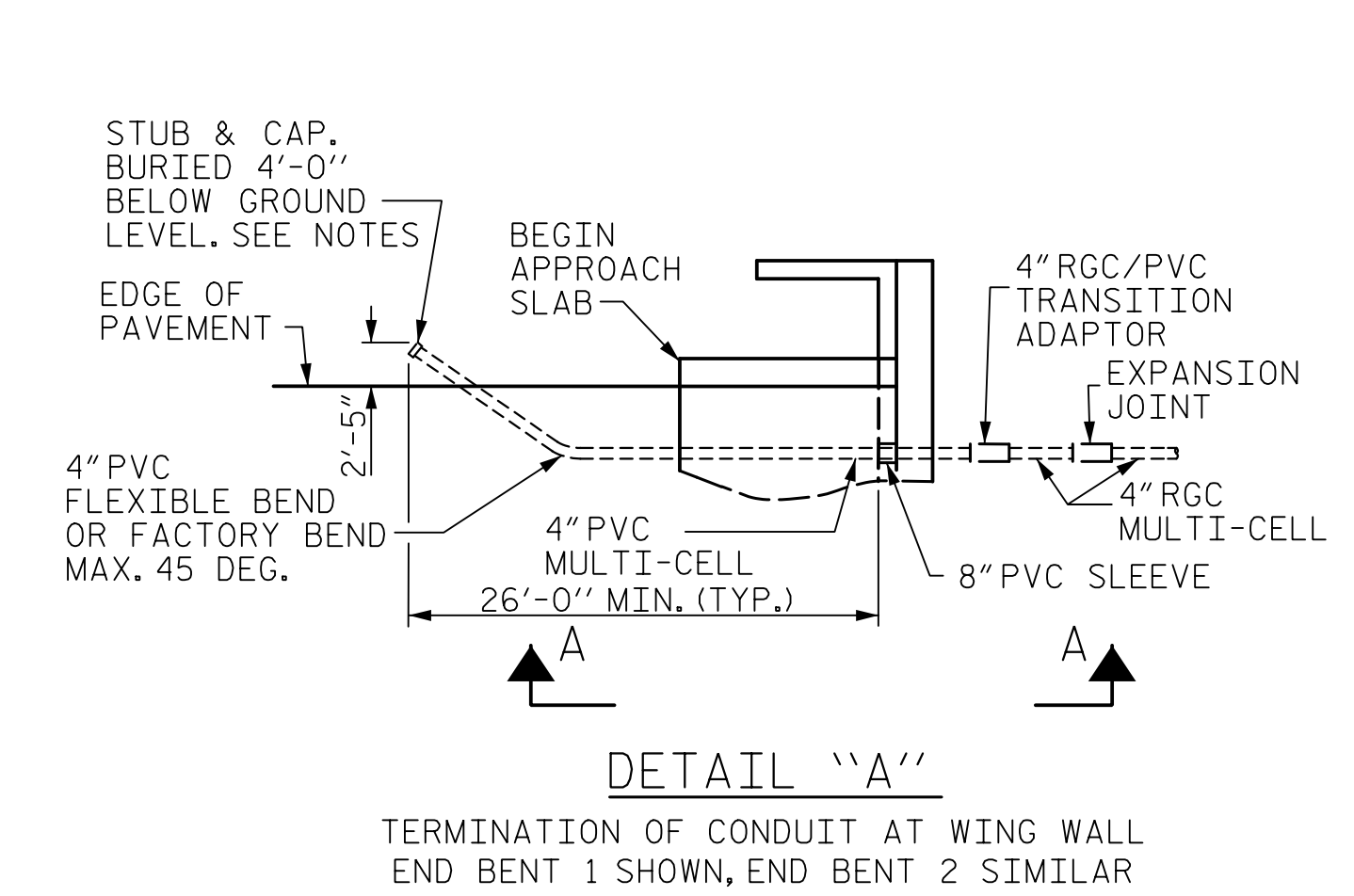
INSTALL SLEEVES PARALLEL TO GIRDERS. SEE DETAIL "B" FOR SLEEVE INSTALLATION.

PROVIDE TRANSITION ADAPTOR AND EXPANSION JOINT FOR CONDUIT AT END BENT 1 AND END BENT 2.

INSTALL STABILIZER'S MIDWAY BETWEEN DECK EXPANSION JOINTS. STABILIZER CAN NOT BE USED INSTEAD OF A HANGER ASSEMBLY.

THE CONCRETE SCREW INSERT SHALL HAVE A ROD SIZE OF 5/8" AND A PULL FORCE OF 1260 lbs.

FOR ELECTRICAL CONDUIT SYSTEM FOR SIGNALS, SEE SPECIAL PROVISIONS.



PROJECT NO. R-5021  
 BRUNSWICK COUNTY  
 STATION: POC 390+15.00 COUNTY

DocuSigned by:  
 James P. Gregg  
 880FE024AB9C404  
 SEAL 046632  
 ENGINEER  
 JAMES P. GREGG  
 8/22/2018

ASSEMBLED BY : BN	DATE : 7/17
CHECKED BY : BE	DATE : 8/17
DRAWN BY : RWW 2-4-03	REV. 5/1/06 TLA/GM
CHECKED BY : DBM 2-4-03	REV. 10/1/11 MAA/GM

<b>HNTB</b>		HNTB NORTH CAROLINA, P.C. NC License No. C-1554 343 E. Six Forks Rd., Suite 200, Raleigh, N.C. 27609	
DRAWN BY : B. NEUPANE	DATE : 7/17	DWG. NO. 35	
CHECKED BY : B. EMAMI	DATE : 8/17		
DESIGN ENGINEER OF RECORD : J. GREGG	DATE : 8/18		

STATE OF NORTH CAROLINA DEPARTMENT OF TRANSPORTATION RALEIGH			
STANDARD			
ELECTRICAL CONDUIT SYSTEM FOR SIGNALS			
LEFT LANE			
REVISIONS			
NO.	BY	DATE	NO.
1			3
2			4
			SHEET NO. S5-35
			TOTAL SHEETS 39

**ELECTRIC CONDUIT DETAILS**