

BILL OF MATERIAL					
EPOXY COATED REINFORCING STEEL					
BAR	NO.	SIZE	TYPE	LENGTH	WEIGHT
A1	601	5	STR.	32'-3"	20,216
A2	2	5	STR.	32'-3"	67
A3	2	5	STR.	31'-10"	66
A4	2	5	STR.	30'-1"	63
A5	2	5	STR.	28'-4"	59
A6	2	5	STR.	26'-7"	55
A7	2	5	STR.	24'-10"	52
A8	2	5	STR.	23'-2"	48
A9	2	5	STR.	21'-5"	45
A10	2	5	STR.	19'-8"	41
A11	2	5	STR.	17'-11"	37
A12	2	5	STR.	16'-2"	34
A13	2	5	STR.	14'-6"	30
A14	2	5	STR.	12'-9"	27
A15	2	5	STR.	11'-0"	23
A16	2	5	STR.	9'-3"	19
A17	2	5	STR.	7'-6"	16
A18	412	4	STR.	3'-9"	1,032

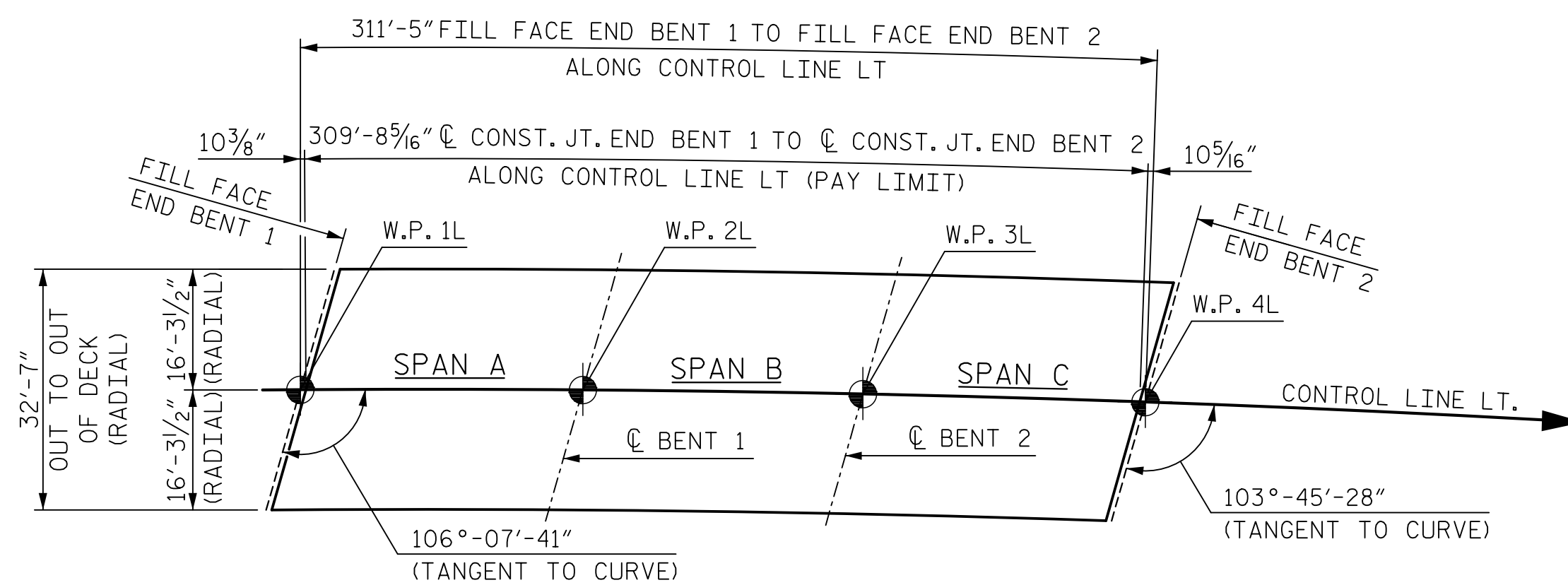
BILL OF MATERIAL					
EPOXY COATED REINFORCING STEEL					
BAR	NO.	SIZE	TYPE	LENGTH	WEIGHT
B1	86	6	STR.	19'-9"	2,551
B2	352	4	STR.	32'-7"	7,662
B3	44	4	STR.	22'-6"	661
B4	88	6	STR.	25'-6"	3,370
B5	86	6	STR.	31'-6"	4,069
B6	84	5	STR.	54'-0"	4,731
S1	54	4	3	11'-11"	430
S2	54	4	3	11'-4"	409
U1	44	5	5	11'-10"	543

BILL OF MATERIAL					
EPOXY COATED REINFORCING STEEL					
BAR	NO.	SIZE	TYPE	LENGTH	WEIGHT
K1	10	5	STR.	39'-8"	414
K2	6	5	STR.	6'-4"	40
K3	6	5	STR.	7'-3"	45
K4	12	5	STR.	7'-10"	98
K5	6	5	STR.	6'-10"	43
K6	4	5	STR.	2'-0"	8
K7	4	5	STR.	2'-6"	10
K8	8	5	STR.	2'-9"	23
K9	4	5	STR.	2'-3"	9
TOTAL					47,046

SUPERSTRUCTURE REINFORCING STEEL LENGTHS ARE BASED ON THE FOLLOWING MINIMUM SPLICE LENGTHS

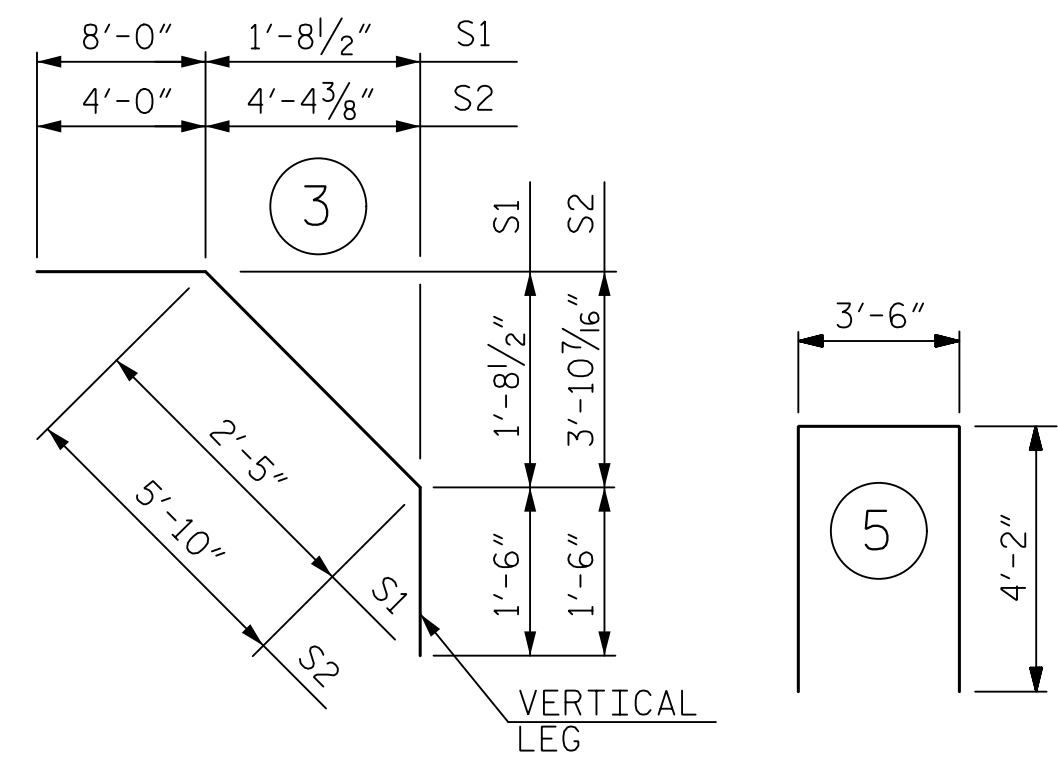
BAR SIZE	SUPERSTRUCTURE EXCEPT APPROACH SLABS, PARAPET, AND BARRIER RAIL		APPROACH SLABS		PARAPET AND BARRIER RAIL
	EPOXY COATED	UNCOATED	EPOXY COATED	UNCOATED	
#4	2'-0"	1'-9"	2'-0"	1'-9"	2'-9"
#5	2'-6"	2'-2"	2'-6"	2'-2"	3'-5"
#6	3'-0"	2'-7"	3'-10"	2'-7"	4'-4"
#7	5'-3"	3'-6"			
#8	6'-10"	4'-7"			

GROOVING BRIDGE FLOORS		
APPROACH SLABS	1,350	SQ.FT.
BRIDGE DECK	8,361	SQ.FT.
TOTAL	9,711	SQ.FT.



LAYOUT FOR COMPUTING AREA REINFORCED CONCRETE DECK SLAB (SQ. FT. = 10,091)

BAR TYPES



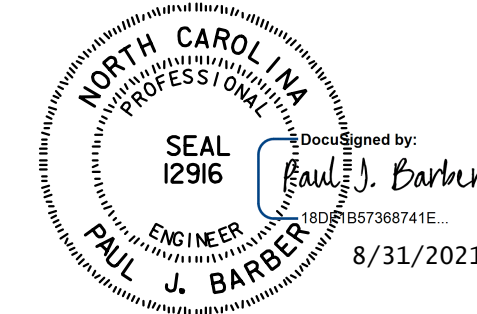
ALL BAR DIMENSIONS ARE OUT TO OUT

SUPERSTRUCTURE BILL OF MATERIAL

	CLASS AA CONCRETE (CU. YDS.)	EPOXY COATED REINFORCING STEEL (LBS.)
POUR 1	190.2	
POUR 2	27.4	
POUR 3	56.2	
TOTALS**	273.8	47,046

**QUANTITIES FOR BARRIER RAIL ARE NOT INCLUDED
NOTE: QUANTITIES INCLUDE THE CONCRETE AND REINFORCING STEEL FOR THE UPPER PORTION OF THE INTEGRAL END BENTS.

PROJECT NO. R-5021
BRUNSWICK COUNTY
STATION: POC 390+15.00 -L-



STATE OF NORTH CAROLINA
DEPARTMENT OF TRANSPORTATION
RALEIGH
STANDARD
SUPERSTRUCTURE
BILL OF MATERIAL
LEFT LANE

ASSEMBLED BY : BN	DATE : 5/17
CHECKED BY : BE	DATE : 9/17
DRAWN BY : JMB 5/87	REV. 8/16/99 RWW/LES
CHECKED BY : SJD 9/87	REV. 5/1/06 TLA/GM
	REV. 10/1/11 MAA/GM

HNTB	HNTB NORTH CAROLINA, P.C. NC License No. C-1554 343 E. Six Forks Rd., Suite 200, Raleigh, N.C. 27609
DRAWN BY : M. WRIGHT	DATE : 7/21
CHECKED BY : P. BARBER	DATE : 7/21
DESIGN ENGINEER OF RECORD : P. BARBER	DATE : 7/21

REVISIONS						SHEET NO.
NO.	BY	DATE	NO.	BY	DATE	S5-25
1			3			TOTAL SHEETS
2			4			39