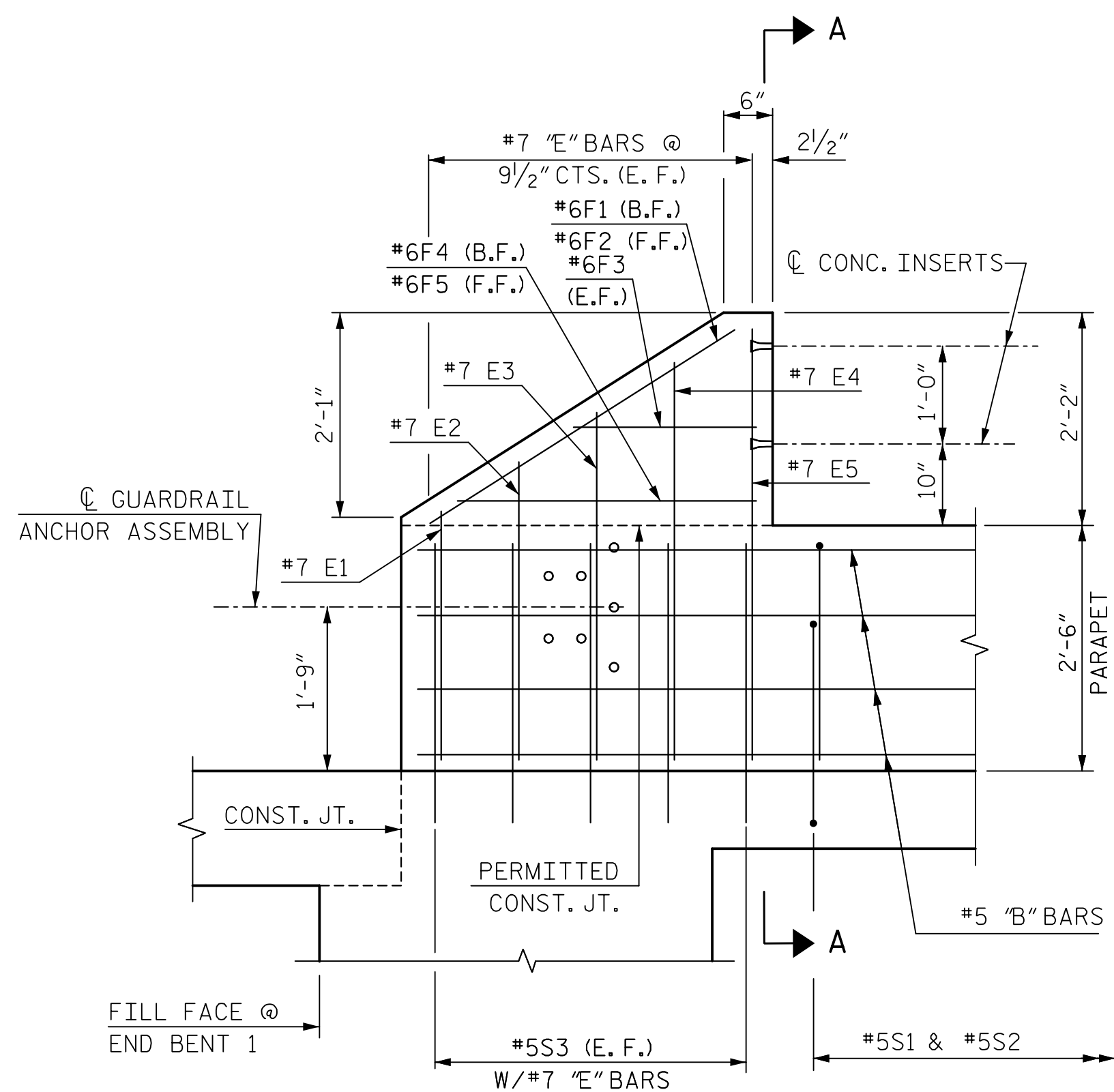


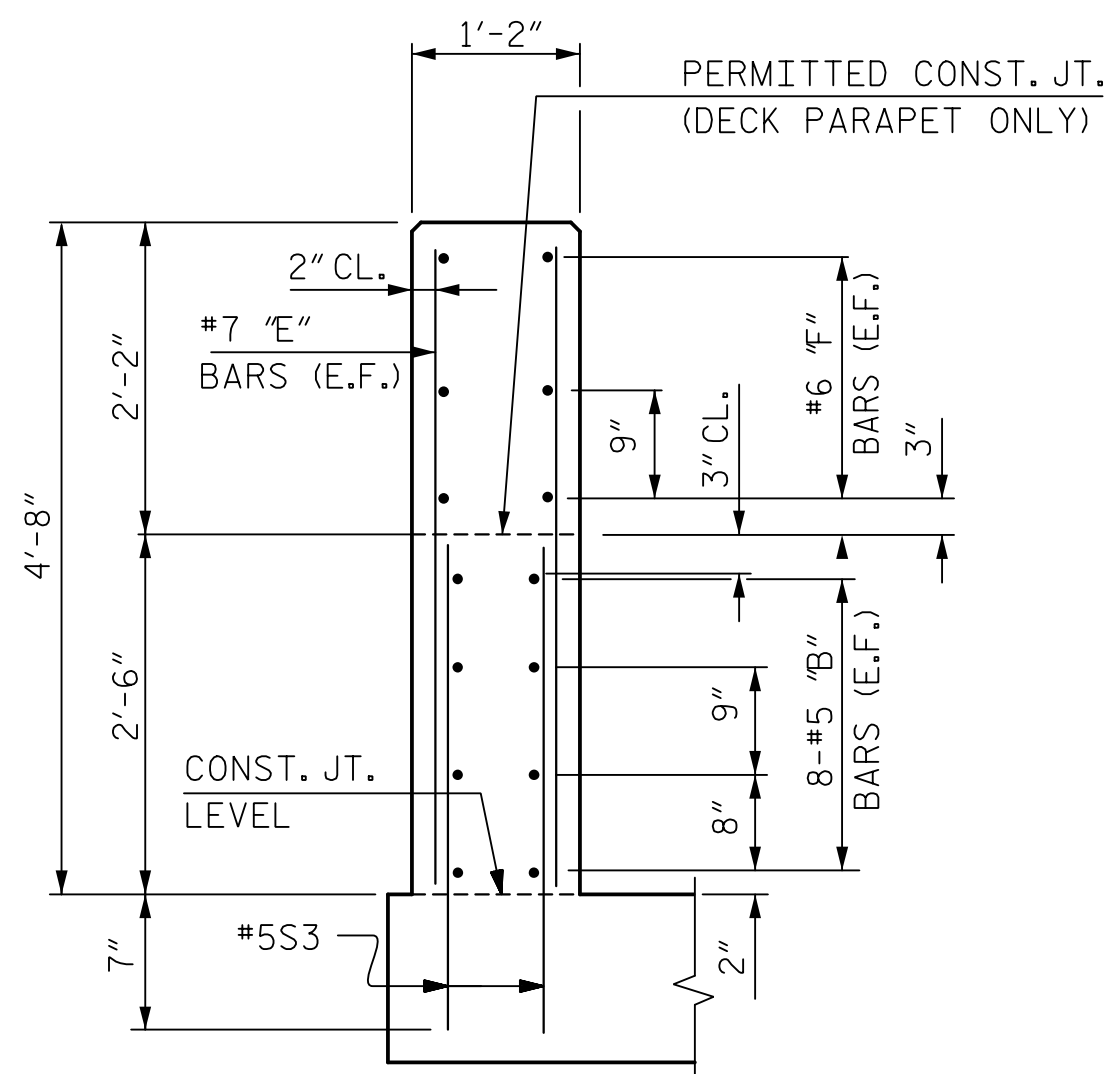
END OF RAIL PLAN
END BENT 1 SHOWN END BENT 2 SIMILAR



ELEVATION

END BENT 1 SHOWN END BENT 2 SIMILAR

NOTE: E.F. DENOTES EACH FACE.
B.F. DENOTES BACK FACE.
F.F. DENOTES FRONT FACE.

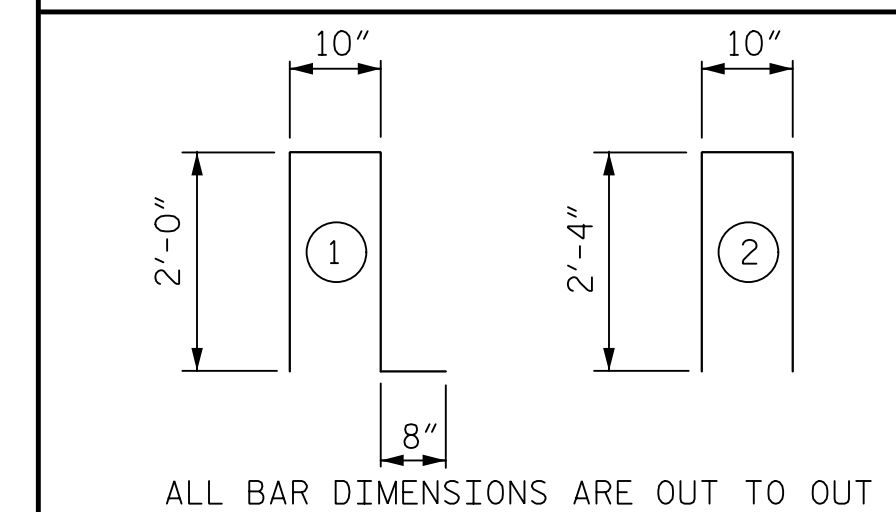


SECTION A-A

BILL OF MATERIAL FOR TWO PARAPETS AND FOUR END POSTS

BAR	NO.	SIZE	TYPE	LENGTH	WEIGHT	BAR	NO.	SIZE	TYPE	LENGTH	WEIGHT
B1	8	5	STR	25'-10"	216	F1	4	6	STR	3'-8"	22
B2	32	5	STR	25'-7"	854	F2	4	6	STR	3'-6"	21
B3	144	5	STR	25'-5"	3,817	F3	8	6	STR	1'-10"	22
B4	8	5	STR	25'-4"	211	F4	4	6	STR	3'-1"	19
						F5	4	6	STR	3'-3"	20
E1	8	7	STR	2'-7"	42						
E2	8	7	STR	3'-1"	50	S1	602	5	1	5'-6"	3,453
E3	8	7	STR	3'-7"	59	S2	602	5	2	5'-6"	3,453
E4	8	7	STR	4'-1"	67	S3	40	5	STR	2'-11"	122
E5	8	7	STR	4'-6"	74						

BAR TYPES



QUANTITIES

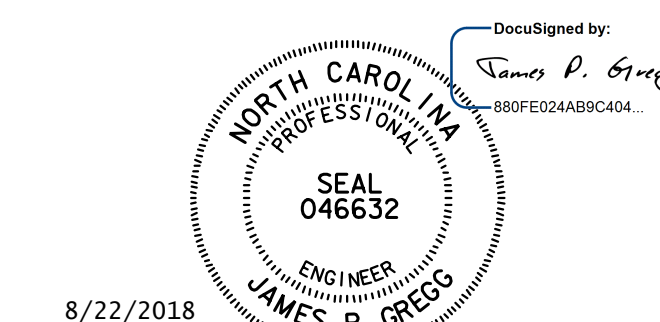
EPOXY COATED REINFORCING STEEL	LBS.	12,522
CLASS "AA" CONCRETE	CU. YDS.	67.7
CONCRETE PARAPET	L.F.	619.38

PROJECT NO. R-5021
BRUNSWICK COUNTY
STATION: POC 390+15.00 -L-

SHEET 2 OF 2

STATE OF NORTH CAROLINA
DEPARTMENT OF TRANSPORTATION
RALEIGH

SUPERSTRUCTURE
CONCRETE PARAPET AND
END POST DETAILS
LEFT LANE



HNTB	HNTB NORTH CAROLINA, P.C. NC License No. C-1554 343 E. Six Forks Rd., Suite 200, Raleigh, N.C. 27609
DRAWN BY: B. NEUPANE	DATE: 8/17
CHECKED BY: B. EMAMI	DATE: 8/17
DESIGN ENGINEER OF RECORD: J. GREGG	DATE: 8/18

REVISIONS						SHEET NO.
NO.	BY	DATE	NO.	BY	DATE	S5-20
1			3			TOTAL SHEETS
2			4			39

8/22/2018

DWG. NO. 20