

NOTES

ALL PRESTRESSING STRANDS SHALL BE 7-WIRE LOW-RELAXATION GRADE 270 STRANDS AND SHALL CONFORM TO AASHTO M203 EXCEPT FOR SAMPLING REQUIREMENTS WHICH SHALL BE IN ACCORDANCE WITH THE STANDARD SPECIFICATIONS.

ALL REINFORCING STEEL SHALL BE GRADE 60.

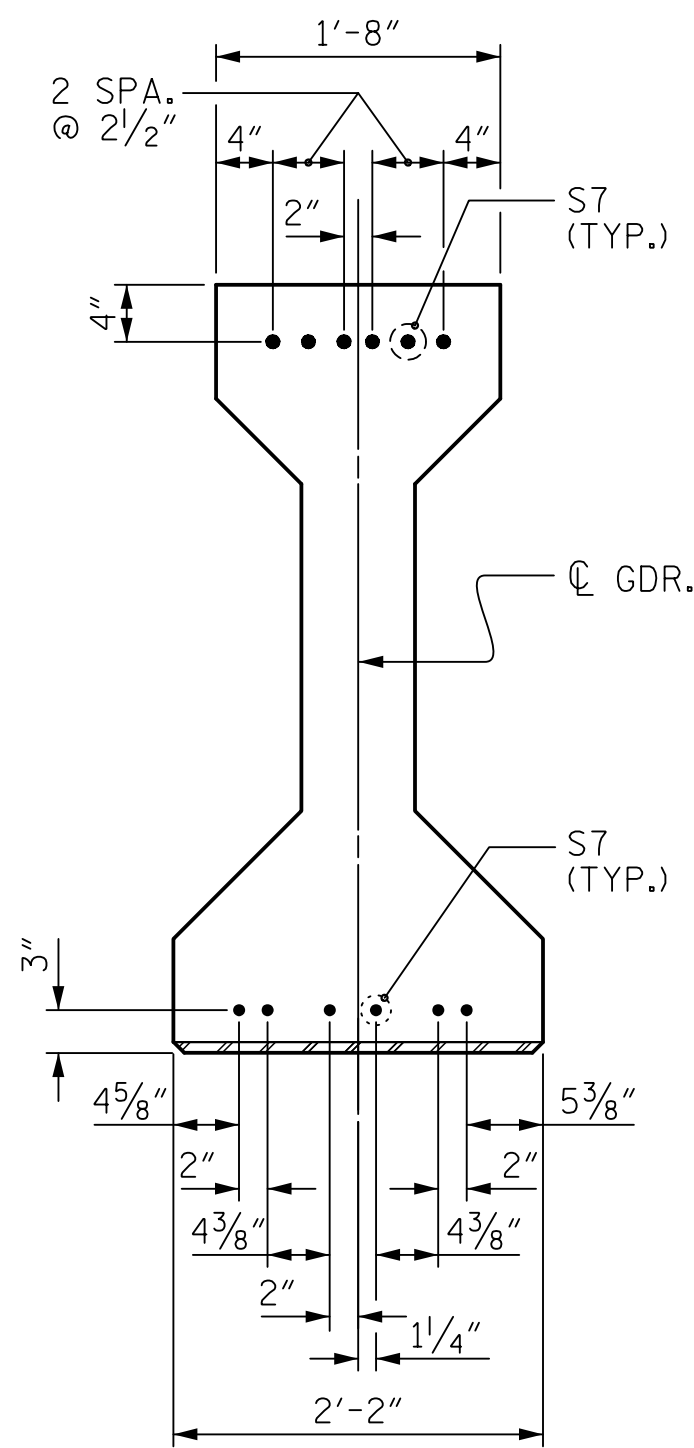
EMBEDDED PLATE "B-1" SHALL BE GALVANIZED IN ACCORDANCE WITH THE STANDARD SPECIFICATIONS.

ANCHOR STUDS SHALL CONFORM TO AASHTO M169 GRADES 1010 THROUGH 1020 OR APPROVED EQUAL, AND SHALL MEET THE TYPE "B" REQUIREMENTS OF SUBSECTION 7.3 OF THE ANSI/AASHTO/AWS D1.5 BRIDGE WELDING CODE.

AT ENDS OF GIRDERS TO BE EMBEDDED IN CONCRETE DIAPHRAGMS OR END WALLS, PRESTRESSING STRANDS MAY EXTEND A MAXIMUM OF 2" BEYOND THE GIRDER ENDS. OTHERWISE, PRESTRESSING STRANDS SHALL BE CUT FLUSH WITH THE GIRDER ENDS.

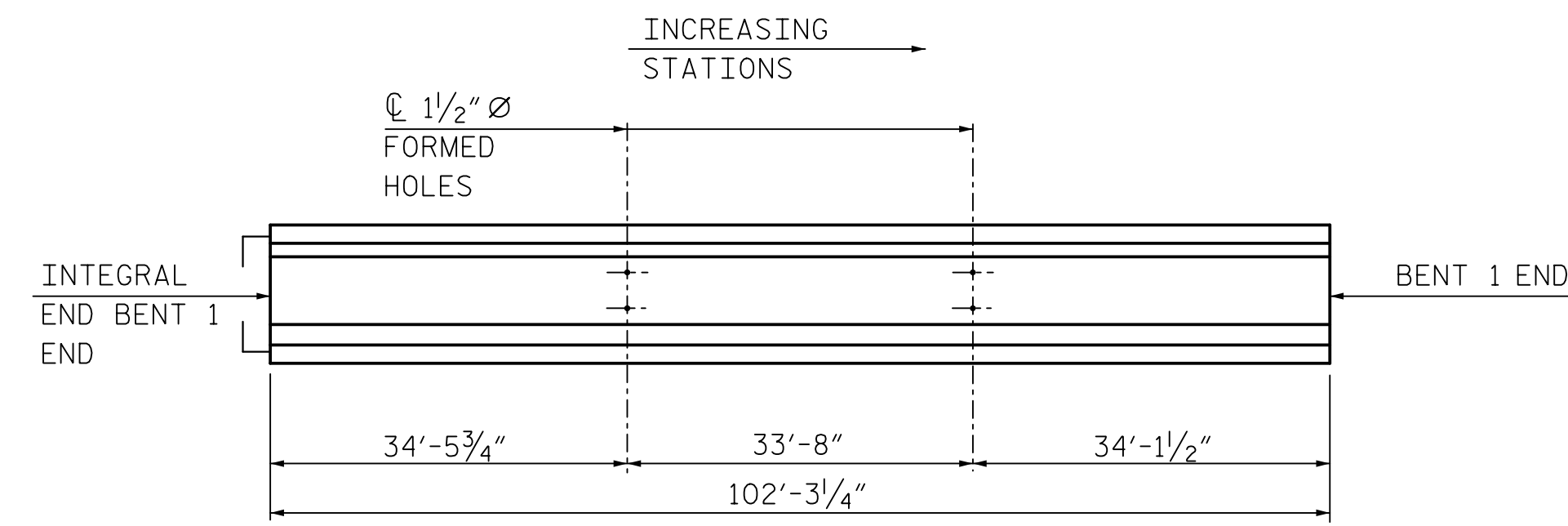
DEPENDING ON THE TYPE OF SYSTEM USED TO SUPPORT THE DECK SLAB FORMS, PRESET ANCHORS MAY BE NECESSARY IN THE PRESTRESSED CONCRETE GIRDER.

THE TOP SURFACE OF THE GIRDER, EXCLUDING THE OUTSIDE 4", SHALL BE RAKED TO A DEPTH OF 1/4", UNLESS NOTED OTHERWISE. SEE PRESTRESSED CONCRETE GIRDER SHEETS FOR AREA NOT TO BE RAKED.

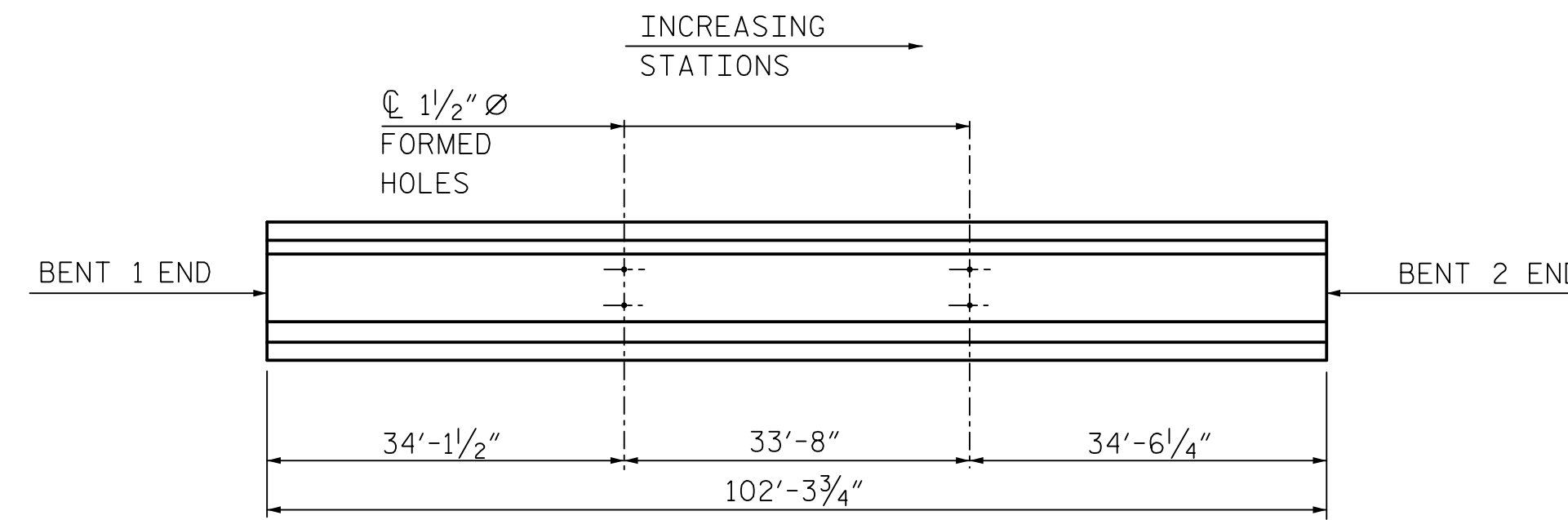


DETAIL "A"

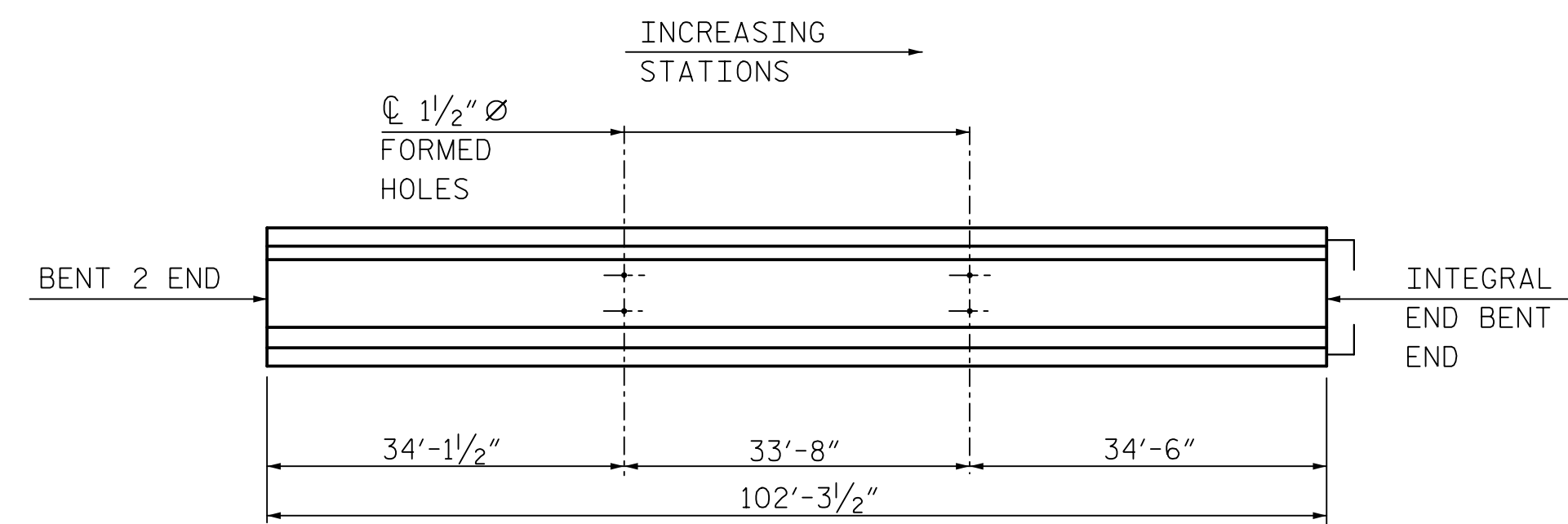
(FOR AASHTO TYPE IV GIRDERS AT INTEGRAL END BENT)



GIRDER ELEVATION
(SPAN A GIRDERS)

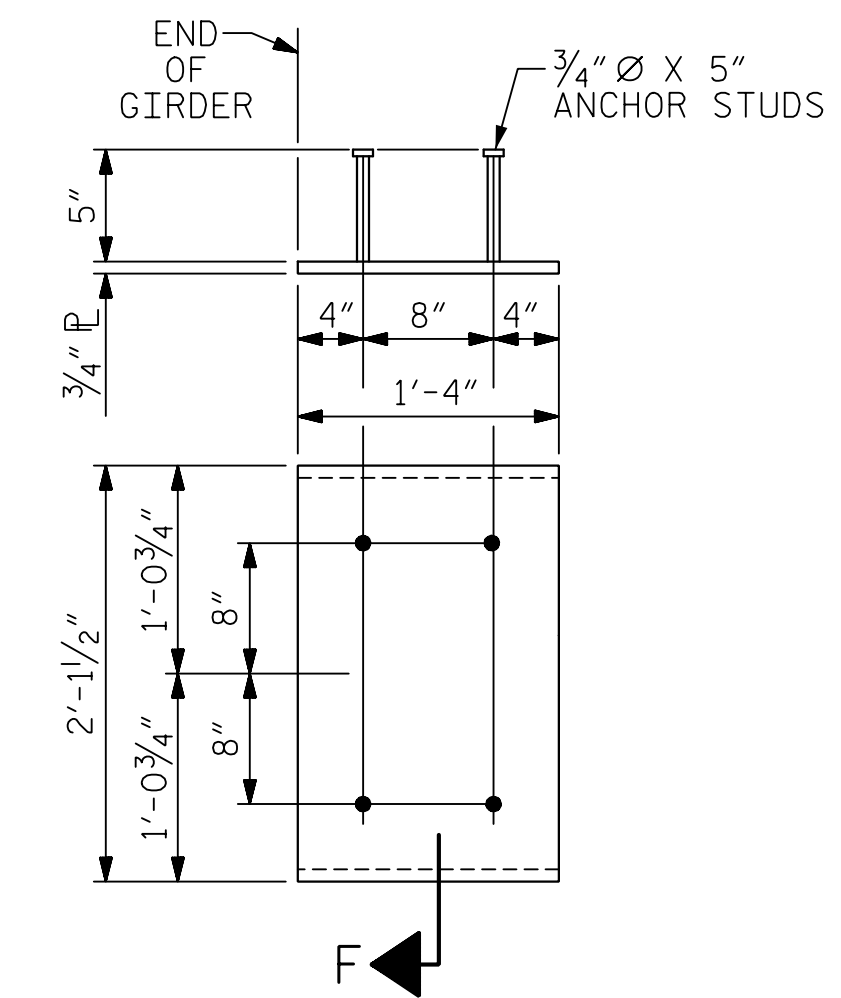


GIRDER ELEVATION
(SPAN B GIRDERS)



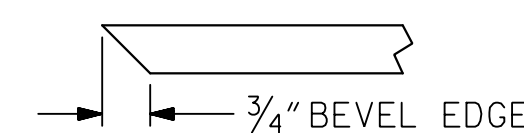
GIRDER ELEVATION
(SPAN C GIRDERS)

1 1/2" Ø FORMED HOLE LOCATIONS



EMBEDDED PLATE "B-1" DETAILS FOR AASHTO TYPE IV GIRDER

(2 REQ'D PER GIRDER)

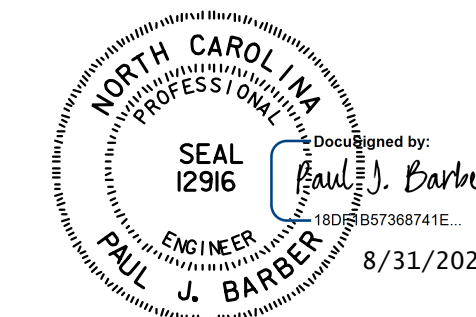


SECTION "F"
(SEE NOTES)

PROJECT NO. R-5021
BRUNSWICK COUNTY
 STATION: POC 390+15.00 -L-

SHEET 3 OF 4

STATE OF NORTH CAROLINA
 DEPARTMENT OF TRANSPORTATION
 RALEIGH
 STANDARD
 PRESTRESSED CONCRETE GIRDER
 DETAILS
 LEFT LANE



HNTB		HNTB NORTH CAROLINA, P.C. NC License No. C-1554 343 E. Six Forks Rd., Suite 200, Raleigh, N.C. 27609	
DRAWN BY: M. WRIGHT	DATE: 7/21	DWG. NO. 15	
CHECKED BY: P. BARBER	DATE: 7/21		
DESIGN ENGINEER OF RECORD: P. BARBER	DATE: 7/21		

REVISIONS					SHEET NO.
NO.	BY	DATE	NO.	BY	DATE
1			3		
2			4		

TOTAL SHEETS: 39

ASSEMBLED BY: AES	DATE: 5/17
CHECKED BY: BE	DATE: 8/17
DRAWN BY: ELR 11/91	REV. 10/1/11 MAA/TMG
CHECKED BY: GRP 11/91	REV. 1/15 MAA/TMG
	REV. 2/15 MAA/TMG