

- DEBONDING LEGEND
- FULLY BONDED STRANDS
 - STRANDS DEBONDED FOR 4'-0" FROM END OF GIRDER
 - STRANDS DEBONDED FOR 12'-0" FROM END OF GIRDER
 - STRANDS DEBONDED FOR 22'-0" FROM END OF GIRDER
 - STRANDS DEBONDED FOR 30'-0" FROM END OF GIRDER

0.6" Ø L. R. GRADE 270 STRANDS

AREA (SQ. INCHES)	ULTIMATE STRENGTH (LBS. PER STRAND)	APPLIED PRESTRESS (LBS. PER STRAND)
0.217	58,600	43,950

REINFORCING STEEL FOR ONE GIRDER

BAR	NUMBER	SIZE	TYPE	LENGTH	WEIGHT
S1	71	#4	1	10'-8"	506
S2	21	#6	1	10'-8"	336
S3	4	#4	2	9'-1"	24
S4	64	#4	3	3'-5"	146
S5	6	#4	2	8'-5"	34
S6	1	#4	2	9'-11"	7
*S7	12	#5	STR	3'-8"	46
S8	4	#4	2	8'-7"	23
S9	1	#3	STR	1'-10"	1
S10	4	#5	2	8'-8"	36
S11	10	#4	STR	7'-0"	47
S12	11	#6	1	9'-3"	153

* NOTE: S7 BARS SHALL BE BENT BEFORE SHIPMENT. HEAT BENDING SHALL NOT BE ALLOWED.

QUANTITIES FOR ONE GIRDER

	REINFORCING STEEL LB.	9,000 PSI CONCRETE C.Y.	0.6" Ø L. R. STRANDS No.
GA1-GA4	1,359	20.8	50
GC1-GC4	1,359	20.8	50

GIRDERS REQUIRED

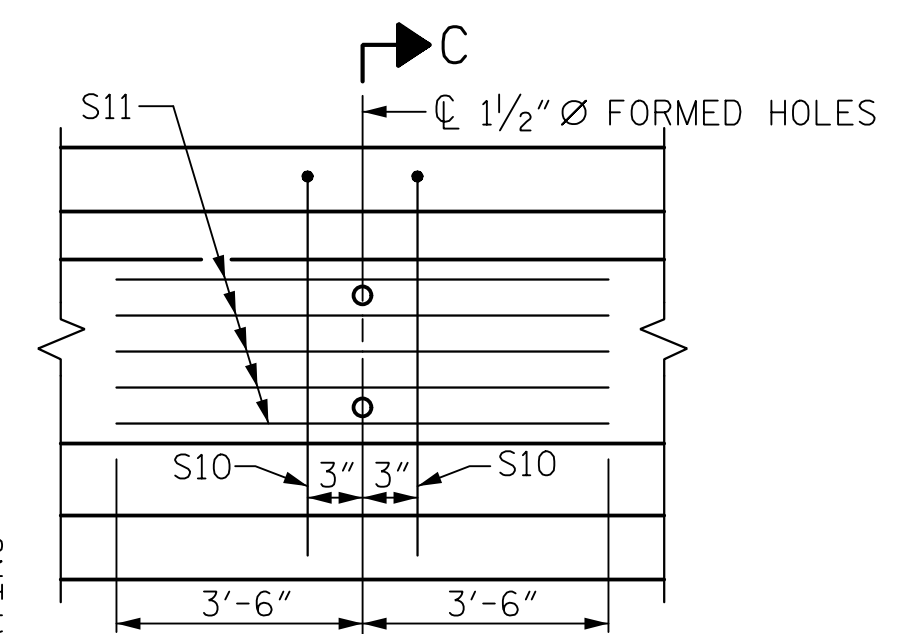
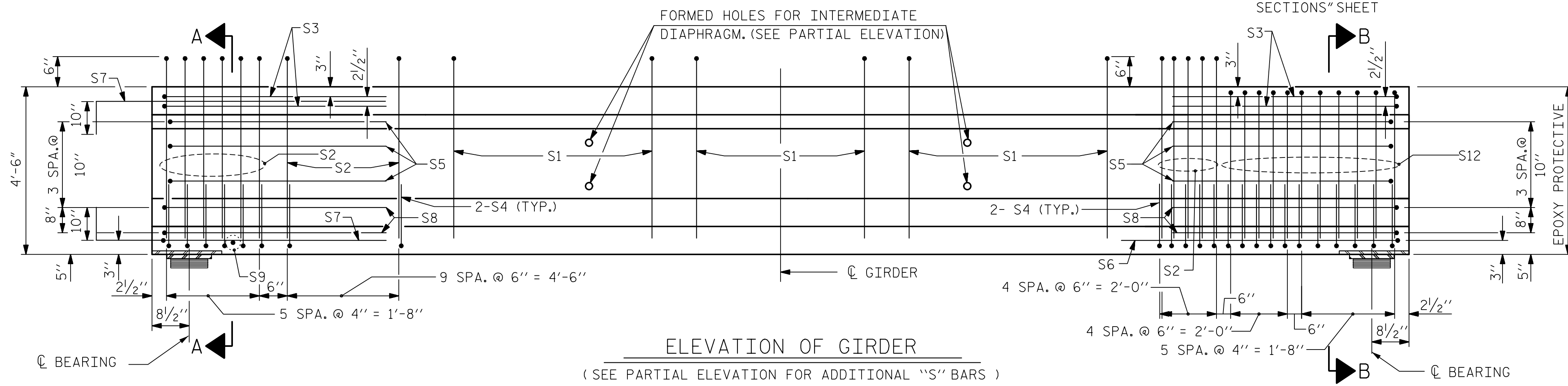
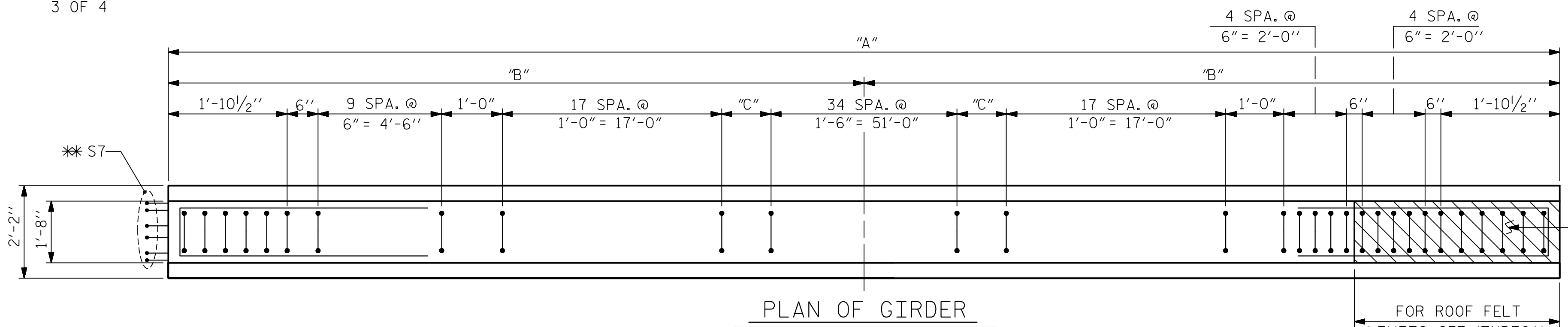
NUMBER	LENGTH	TOTAL LENGTH
4 (GA1-GA4)	102'-3 1/4"	409.08'
4 (GC1-GC4)	102'-3 1/2"	409.17'

NOTES:
THE TRANSFER OF LOAD FROM THE ANCHORAGES TO THE GIRDER SHALL BE DONE WHEN CONCRETE HAS REACHED A COMPRESSIVE STRENGTH OF NOT LESS THAN 6,750 PSI FOR SPAN A AND SPAN C GIRDERS.

GIRDER CONCRETE SHALL HAVE A MINIMUM COMPRESSIVE STRENGTH OF 9,000 PSI AT THE AGE OF 28 DAYS.

PRESTRESSED CONCRETE GIRDERS ARE DESIGNED FOR 0 PSI TENSION IN THE PRECOMPRESSED TENSILE ZONE UNDER ALL LOADING CONDITIONS.

PRESTRESSED CONCRETE GIRDERS SHALL CONTAIN CALCIUM NITRITE CORROSION INHIBITOR.



FIXED INTEGRAL END BENT (END BENT 1 AND END BENT 2)

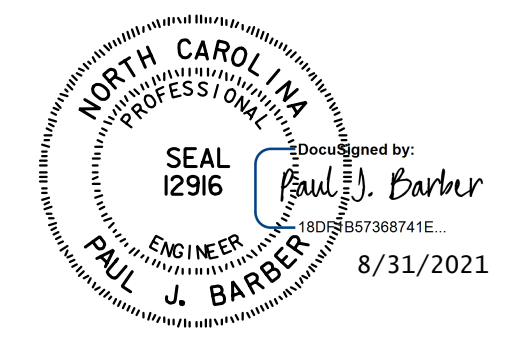
ELEVATION OF GIRDER (SEE PARTIAL ELEVATION FOR ADDITIONAL "S" BARS)

GIRDER	"A"	"B"	"C"
GA1	102'-3 1/4"	51'-1 5/8"	9 1/8"
GA2	102'-3 1/4"	51'-1 5/8"	9 1/8"
GA3	102'-3 1/4"	51'-1 5/8"	9 1/8"
GA4	102'-3 1/4"	51'-1 5/8"	9 1/8"
GC1	102'-3 1/2"	51'-1 3/4"	9 1/4"
GC2	102'-3 1/2"	51'-1 3/4"	9 1/4"
GC3	102'-3 1/2"	51'-1 3/4"	9 1/4"
GC4	102'-3 1/2"	51'-1 3/4"	9 1/4"

EXP. (BENT 1 END @ SPAN "A") (BENT 2 END @ SPAN "C")

ASSEMBLED BY: BN DATE: 5/17
 CHECKED BY: BE DATE: 8/17
 DRAWN BY: ELR 8/91 REV. 5/1/06R TLA/GM
 CHECKED BY: CRP 8/91 REV. 10/1/11 MAA/GM
 REV. 1/15 MAA/TMG

HNTB HNTB NORTH CAROLINA, P.C.
 NC License No. C-1554
 343 E. Six Forks Rd., Suite 200, Raleigh, N.C. 27609
 DRAWN BY: M. WRIGHT DATE: 7/21
 CHECKED BY: P. BARBER DATE: 7/21
 DESIGN ENGINEER OF RECORD: P. BARBER DATE: 7/21



PROJECT NO. R-5021
 BRUNSWICK COUNTY
 STATION: POC 390+15.00 -L-

SHEET 1 OF 4

REVISIONS					SHEET NO.
NO.	BY	DATE	NO.	DATE	S5-13
1			3		TOTAL SHEETS
2			4		39