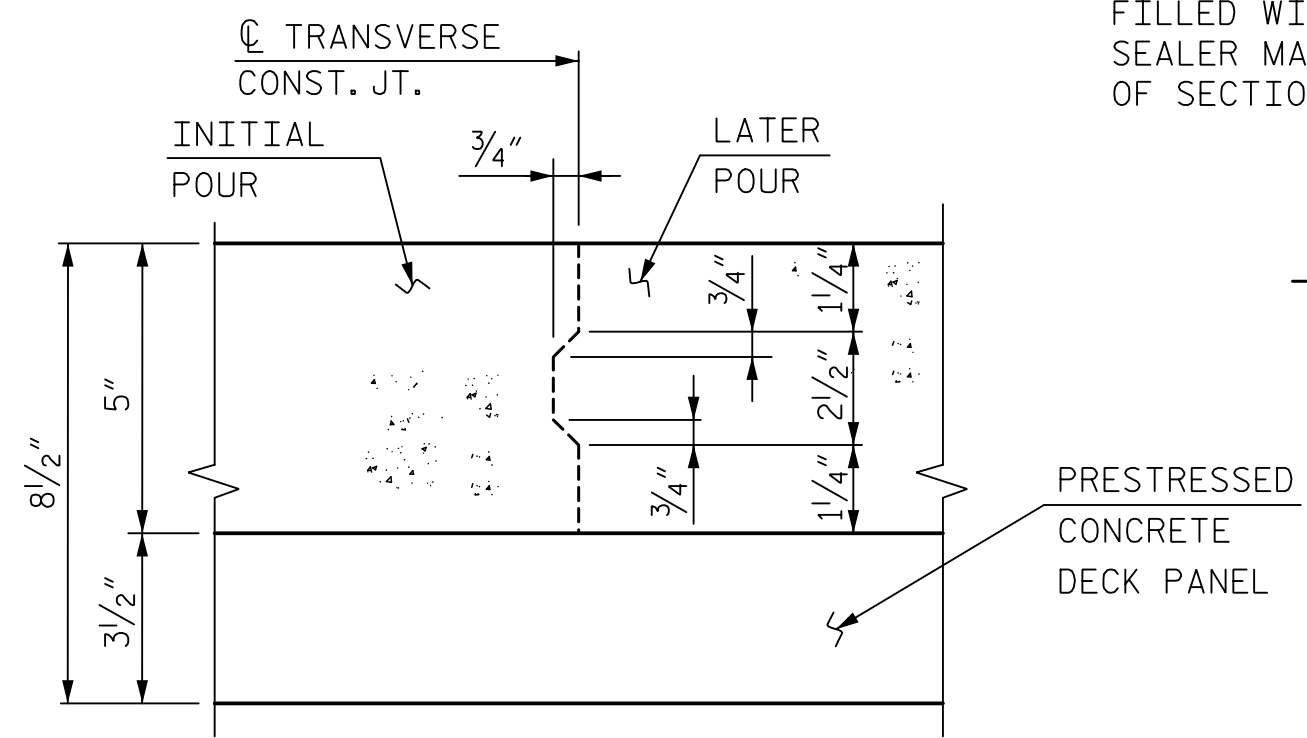
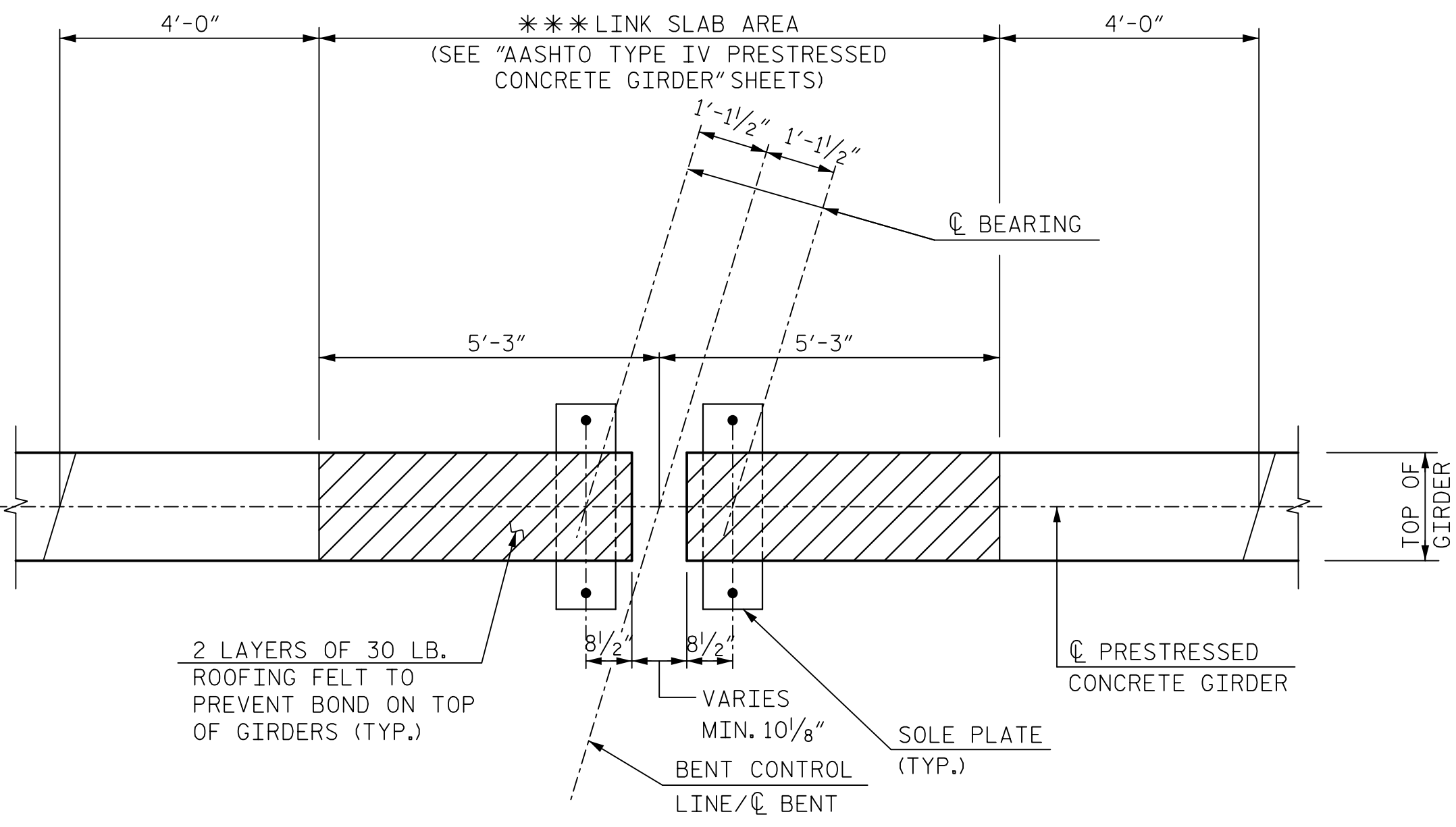
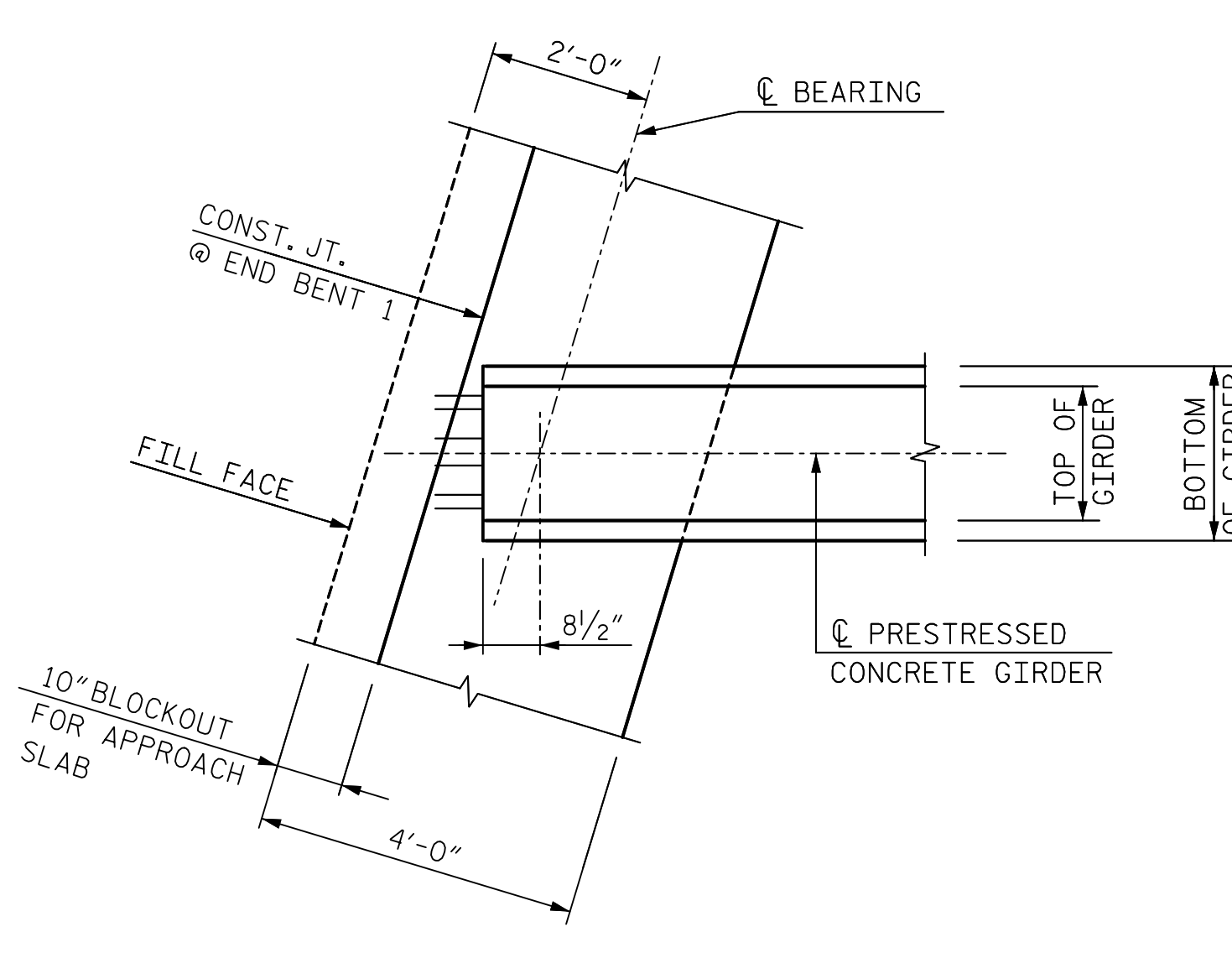


** MEASURED ALONG SHORT CHORD.

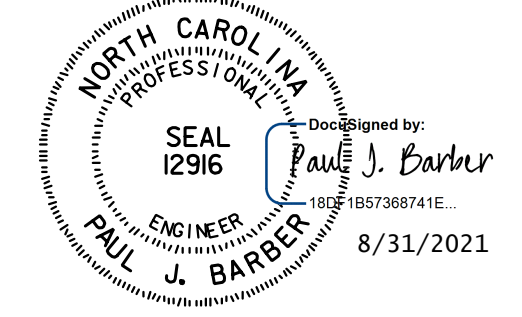
* THE TOP SURFACE OF THE END BENT CAP EXCLUDING THE BEARING AREA SHALL BE RAKED TO A DEPTH OF 1/4".

A 1/2" DEEP 3/8" WIDE CONTRACTION JOINT AT THE BENT CONTROL LINE SHALL BE SAWN WITHIN 24 HOURS OF POURING THE LINK SLAB. THE JOINT SHALL BE FILLED WITH JOINT SEALER MATERIAL. THE JOINT SEALER MATERIAL SHALL CONFORM TO THE REQUIREMENTS OF SECTION 1028-3 OF THE STANDARD SPECIFICATIONS.



TRANSVERSE CONSTRUCTION JOINT DETAIL

REINFORCING STEEL IN SLAB NOT SHOWN. LONGITUDINAL REINFORCING STEEL SHALL BE CONTINUOUS THROUGH JOINT.



DETAIL "B"

PROJECT NO. R-5021
BRUNSWICK COUNTY
STATION: POC 390+15.00 -L-

SHEET 2 OF 2

STATE OF NORTH CAROLINA
DEPARTMENT OF TRANSPORTATION
RALEIGH

SUPERSTRUCTURE

TYPICAL SECTIONS

LEFT LANE

HNTB		HNTB NORTH CAROLINA, P.C. NC License No. C-1554 343 E. Six Forks Rd., Suite 200, Raleigh, N.C. 27609	
DRAWN BY: M. WRIGHT	DATE: 7/21	DWG. NO. 7	SHEET NO. S5-7
CHECKED BY: P. BARBER	DATE: 7/21		
DESIGN ENGINEER OF RECORD: P. BARBER	DATE: 7/21		

REVISIONS						SHEET NO.
NO.	BY	DATE	NO.	BY	DATE	
1			3			TOTAL SHEETS
2			4			39

*** THE TOP OF GIRDER IN THE LINK SLAB AREA SHALL BE SMOOTH (NOT RAKED) AND FREE OF STIRRUPS, DECK FORMWORK ATTACHMENTS, AND OVERHANG FALSEWORK/FORMWORK ATTACHMENTS.