

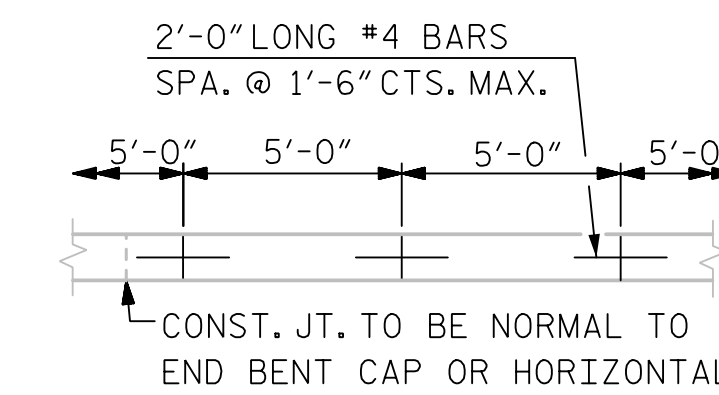
**NOTES:**

FOR BERM WIDTHS AND ELEVATIONS, SEE GENERAL DRAWING.

SLOPE PROTECTION SHALL CONSIST OF 4" POURED-IN-PLACE CONCRETE PAVING AS SHOWN IN THE DETAILS ON THIS SHEET. CONCRETE SHALL BE CLASS "B". THE CONCRETE SURFACE SHALL BE FLOATED WITH A WOODEN FLOAT AND FINISHED. WELDED WIRE FABRIC REINFORCING SHALL BE 6 X 6 - W1.4 X W1.4, 60" WIDE. SLOPE PROTECTION SHALL BE POURED IN 5' STRIPS AS SHOWN IN THE "POURING DETAIL" WITH 2'-0" LONG #4 BARS PLACED ALONG THE SLOPE BETWEEN STRIPS AT 1'-6" MAXIMUM SPACING. SLOPE PROTECTION MAY BE POURED IN ALTERNATE 4' AND 5' STRIPS AS SHOWN IN THE "OPTIONAL POURING DETAIL" WITH ADJACENT RUNS OF WELDED WIRE FABRIC LAPPING AT LEAST 6". THE COST OF THE WELDED WIRE FABRIC AND #4 BARS, IF USED, SHALL BE INCLUDED IN THE CONTRACT UNIT PRICE BID PER SQUARE YARD FOR SLOPE PROTECTION.

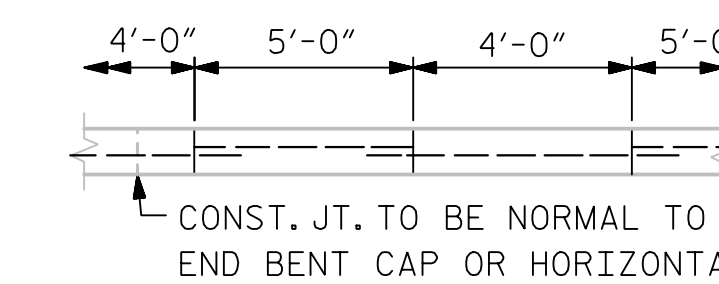
BRIDGE @ STA. 39+52.37 -Y14A-	4" INCH SLOPE PROTECTION	* WELDED WIRE FABRIC 60 INCHES WIDE
	SQUARE YARDS	APPROX. L.F.
END BENT 1	26	52
END BENT 2	26	52

\* QUANTITY SHOWN IS BASED ON 5' POURS.



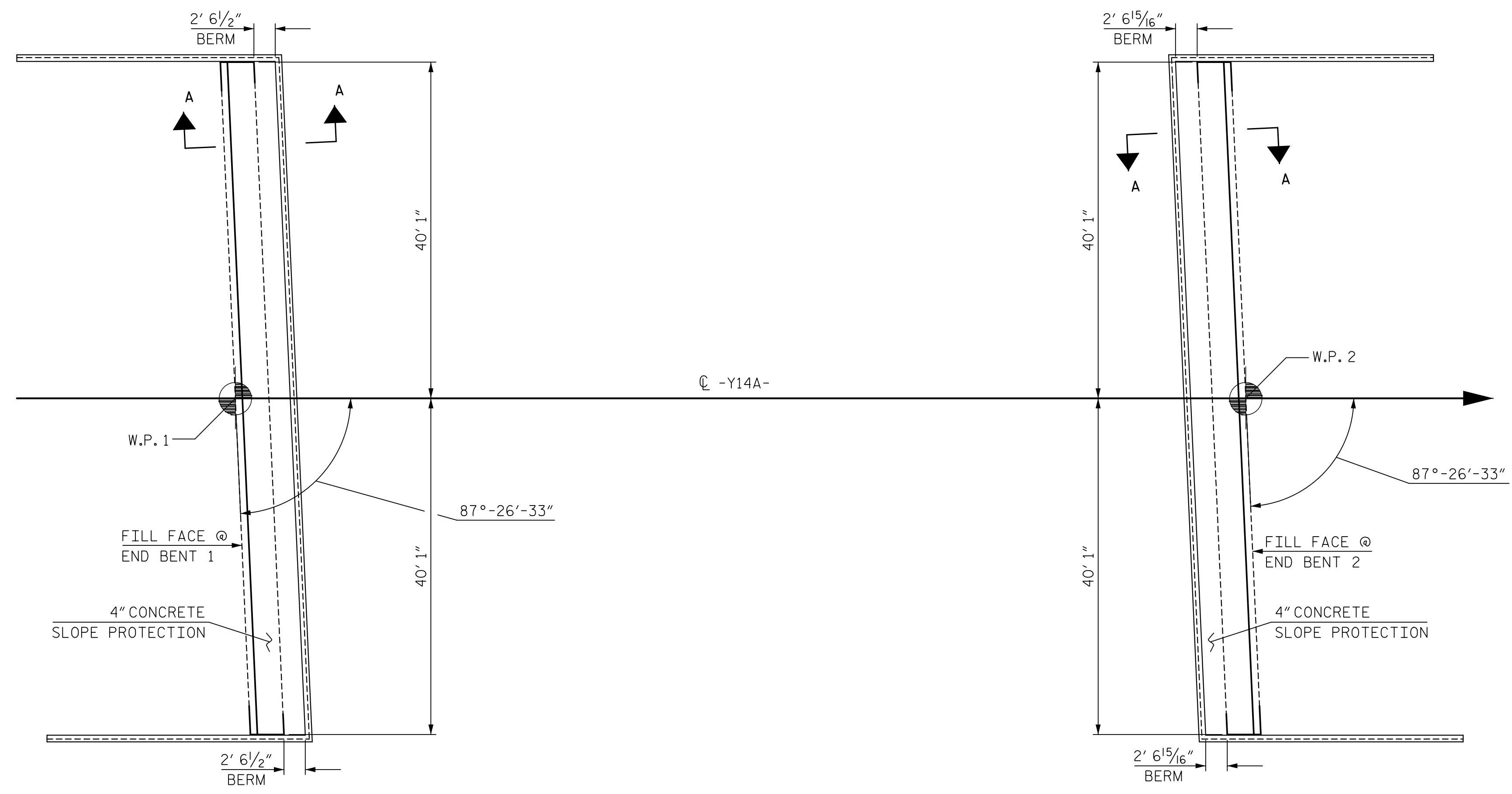
STRIP WIDTHS MAY VARY IN CURVED PORTION.

**POURING DETAIL**

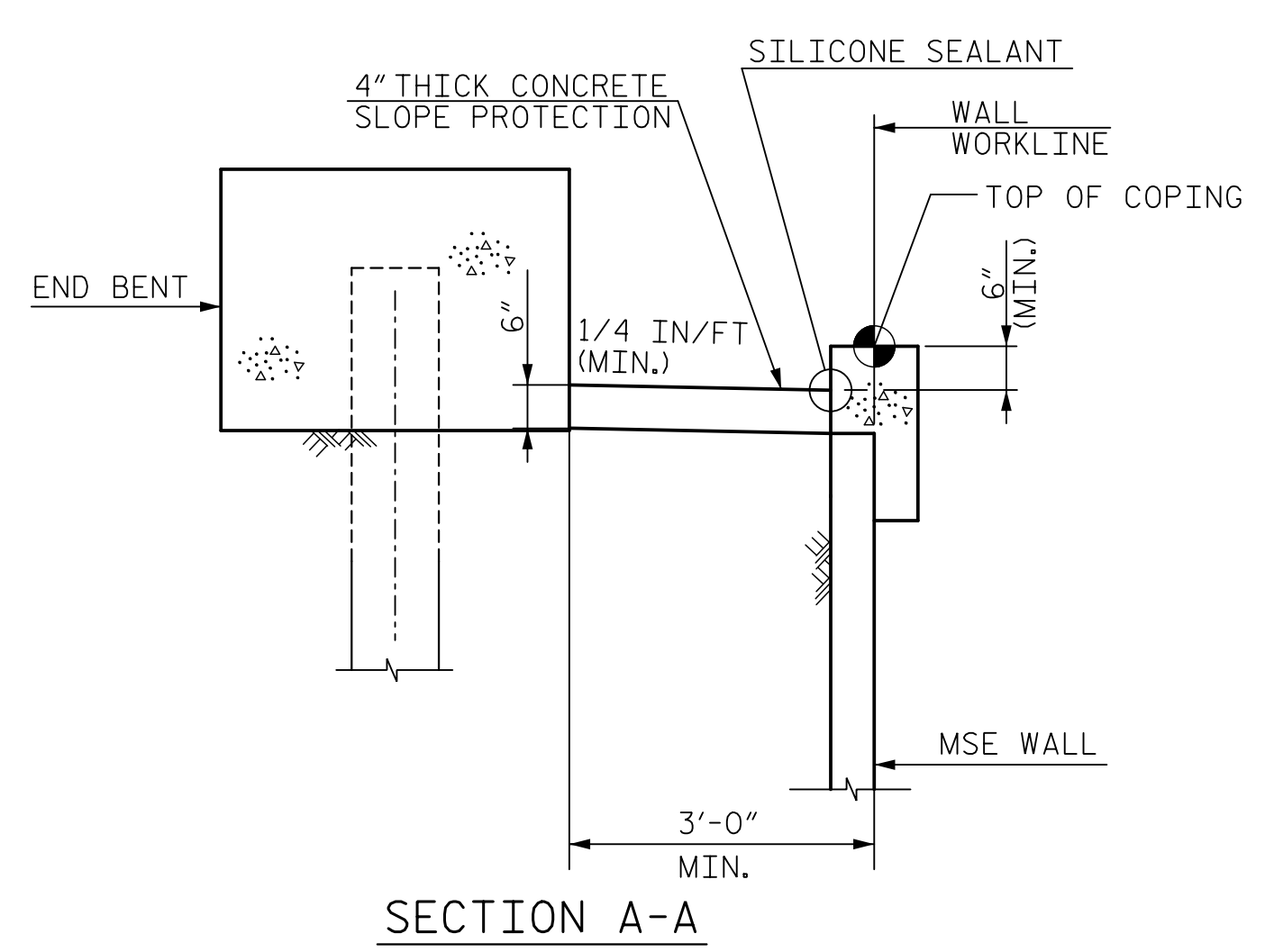


POUR A 4'-0" STRIP FIRST. STRIP WIDTHS MAY VARY IN CURVED PORTION.

**OPTIONAL POURING DETAIL**



**PLAN**



**SECTION A-A**

PROJECT NO. R-5021  
BRUNSWICK COUNTY  
 STATION: 39+52.37 -Y14A-

DocuSigned by:  
  
 ENGINEER  
 BRUCE BOSLEY  
 12/7/2018

DocuSigned by:  
  
 ENGINEER  
 PAUL J. BARBER  
 12/7/2018

DOCUMENT NOT CONSIDERED  
 FINAL UNLESS ALL  
 SIGNATURES COMPLETED

<b>HNTB</b>		HNTB NORTH CAROLINA, P.C. NC License No. C-1554 343 E. Six Forks Rd., Suite 200, Raleigh, N.C. 27609	
DRAWN BY	L. WATERS	DATE	7/18
CHECKED BY	B. BOSLEY	DATE	7/18
DESIGN ENGINEER OF RECORD	B. BOSLEY	DATE	12/18
DWG. NO. 21			

STATE OF NORTH CAROLINA  
 DEPARTMENT OF TRANSPORTATION  
 RALEIGH

**SLOPE PROTECTION  
 DETAILS**

REVISIONS						SHEET NO.
NO.	BY	DATE	NO.	BY	DATE	S4-21
1			3			TOTAL SHEETS
2			4			24