

NOTES

ALL PRESTRESSING STRANDS SHALL BE 7-WIRE LOW-RELAXATION GRADE 270 STRANDS AND SHALL CONFORM TO AASHTO M203 EXCEPT FOR SAMPLING REQUIREMENTS WHICH SHALL BE IN ACCORDANCE WITH THE STANDARD SPECIFICATIONS.

ALL REINFORCING STEEL SHALL BE GRADE 60.

EMBEDDED PLATE "B-1" SHALL BE GALVANIZED IN ACCORDANCE WITH THE STANDARD SPECIFICATIONS.

ANCHOR STUDS SHALL CONFORM TO AASHTO M169 GRADES 1010 THROUGH 1020 OR APPROVED EQUAL, AND SHALL MEET THE TYPE "B" REQUIREMENTS OF SUBSECTION 7.3 OF THE ANSI/AASHTO/AWS D1.5 BRIDGE WELDING CODE.

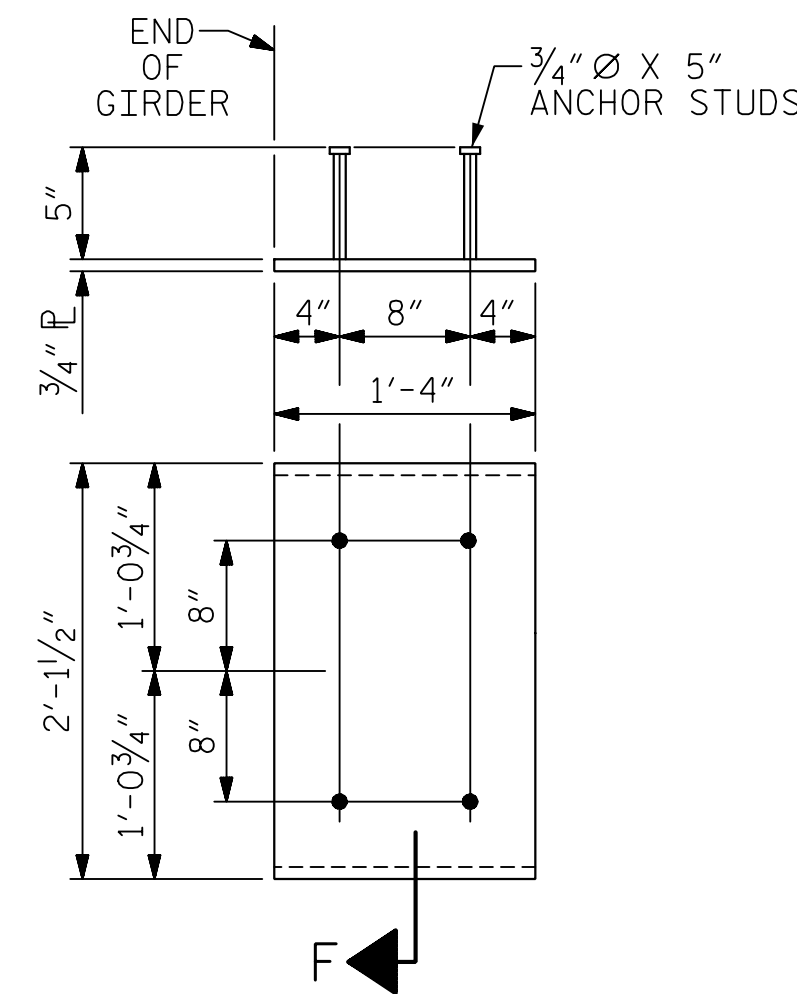
AT ENDS OF GIRDERS TO BE EMBEDDED IN CONCRETE DIAPHRAGMS OR END WALLS, PRESTRESSING STRANDS MAY EXTEND A MAXIMUM OF 2" BEYOND THE GIRDER ENDS. OTHERWISE, PRESTRESSING STRANDS SHALL BE CUT FLUSH WITH THE GIRDER ENDS.

THE TRANSFER OF LOAD FROM THE ANCHORAGES TO THE GIRDER SHALL BE DONE WHEN CONCRETE HAS REACHED A COMPRESSIVE STRENGTH OF NOT LESS THAN 7,100 PSI.

DEPENDING ON THE TYPE OF SYSTEM USED TO SUPPORT THE DECK SLAB FORMS, PRESET ANCHORS MAY BE NECESSARY IN THE PRESTRESSED CONCRETE GIRDER.

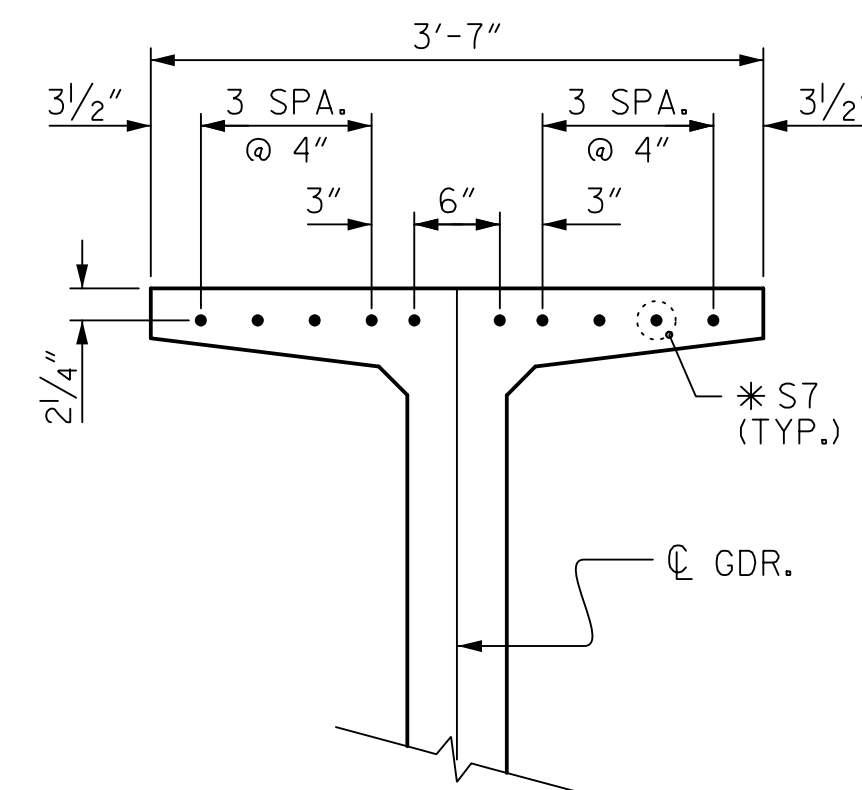
THE TOP SURFACE OF THE GIRDER, EXCLUDING THE OUTSIDE 4", SHALL BE RAKED TO A DEPTH OF 1/4".

A 2" x 2" CHAMFER IS ALLOWED AT THE INTERSECTION OF THE WEB AND THE BOTTOM FLANGE OF THE 72" MODIFIED BULB TEES ONLY.



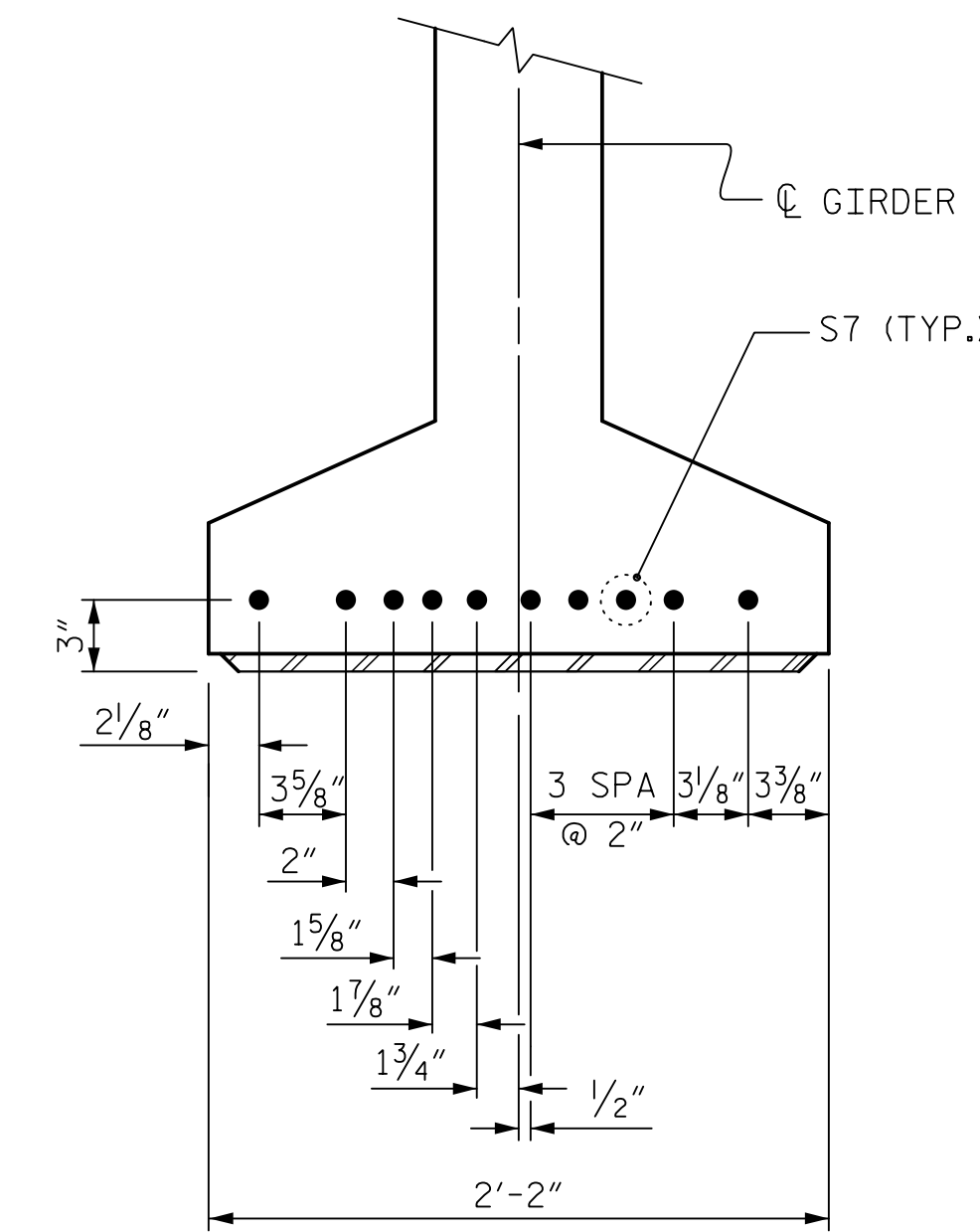
EMBEDDED PLATE "B-1" DETAILS
72" MODIFIED BULB TEES

(2 REQ'D PER GIRDER)



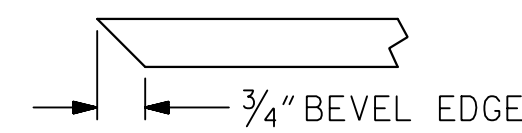
DETAIL "B"

(FOR 72" MODIFIED BULB TEES)



DETAIL "C"

(FOR 72" MODIFIED BULB TEES)



SECTION "F"

(SEE NOTES)

PROJECT NO. R-5021
BRUNSWICK COUNTY
STATION: 39+52.37 -Y14A-

SHEET 2 OF 3

STATE OF NORTH CAROLINA
DEPARTMENT OF TRANSPORTATION
RALEIGH
STANDARD
PRESTRESSED CONCRETE GIRDER
DETAILS

DocuSigned by:
PAUL J. BARBER
NORTH CAROLINA PROFESSIONAL ENGINEER
SEAL 12916
12/7/2018

DocuSigned by:
BRUCE BOSLEY
NORTH CAROLINA PROFESSIONAL ENGINEER
SEAL 046234
12/7/2018

DOCUMENT NOT CONSIDERED
FINAL UNLESS ALL
SIGNATURES COMPLETED

ASSEMBLED BY : LLW	DATE : 4/18
CHECKED BY : JVE	DATE : 4/18
DRAWN BY : ELR 11/91	REV. 10/1/11 MAA/GM
CHECKED BY : GRP 11/91	REV. 1/15 MAA/TMG
	REV. 2/15 MAA/TMG

HNTB		HNTB NORTH CAROLINA, P.C. NC License No. C-1554 343 E. Six Forks Rd., Suite 200, Raleigh, N.C. 27609	
DRAWN BY : L. WATERS	DATE : 7/18	DWG. NO. 10	
CHECKED BY : J. ELKINS	DATE : 7/18		
DESIGN ENGINEER OF RECORD : B. BOSLEY	DATE : 12/18		

REVISIONS					SHEET NO.
NO.	BY	DATE	NO.	BY	DATE
1			3		
2			4		

TOTAL SHEETS: 24