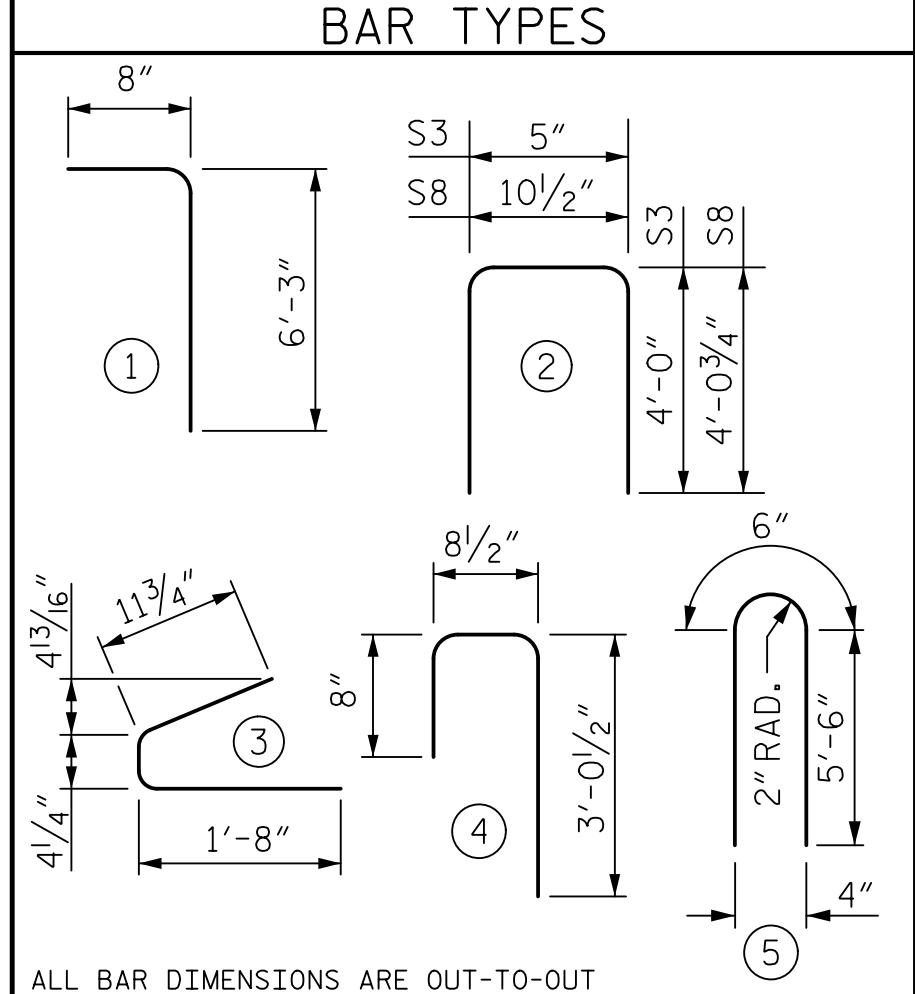


0.6" Ø L. R. GRADE 270 STRANDS		
AREA (SQ. INCHES)	ULTIMATE STRENGTH (LBS. PER STRAND)	APPLIED PRESTRESS (LBS. PER STRAND)
0.217	58,600	43,950

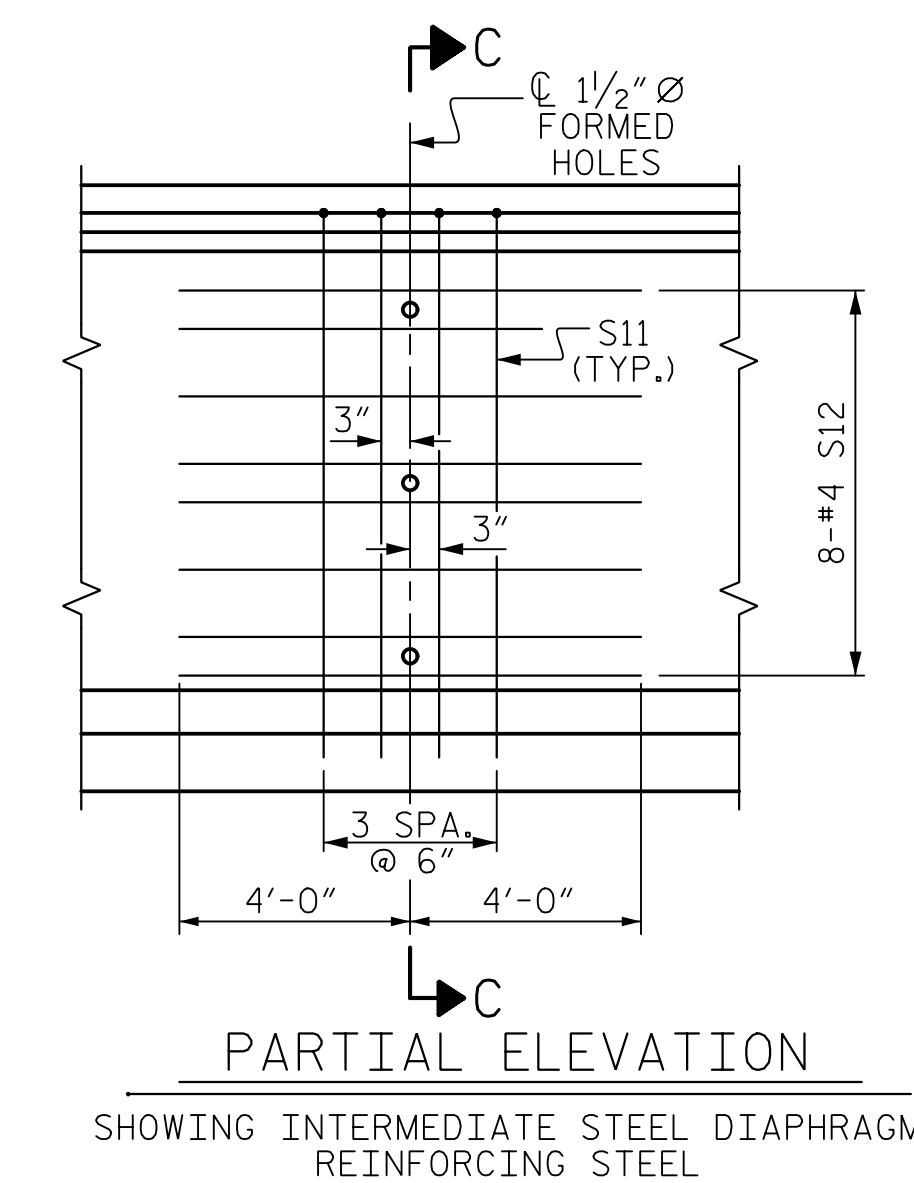
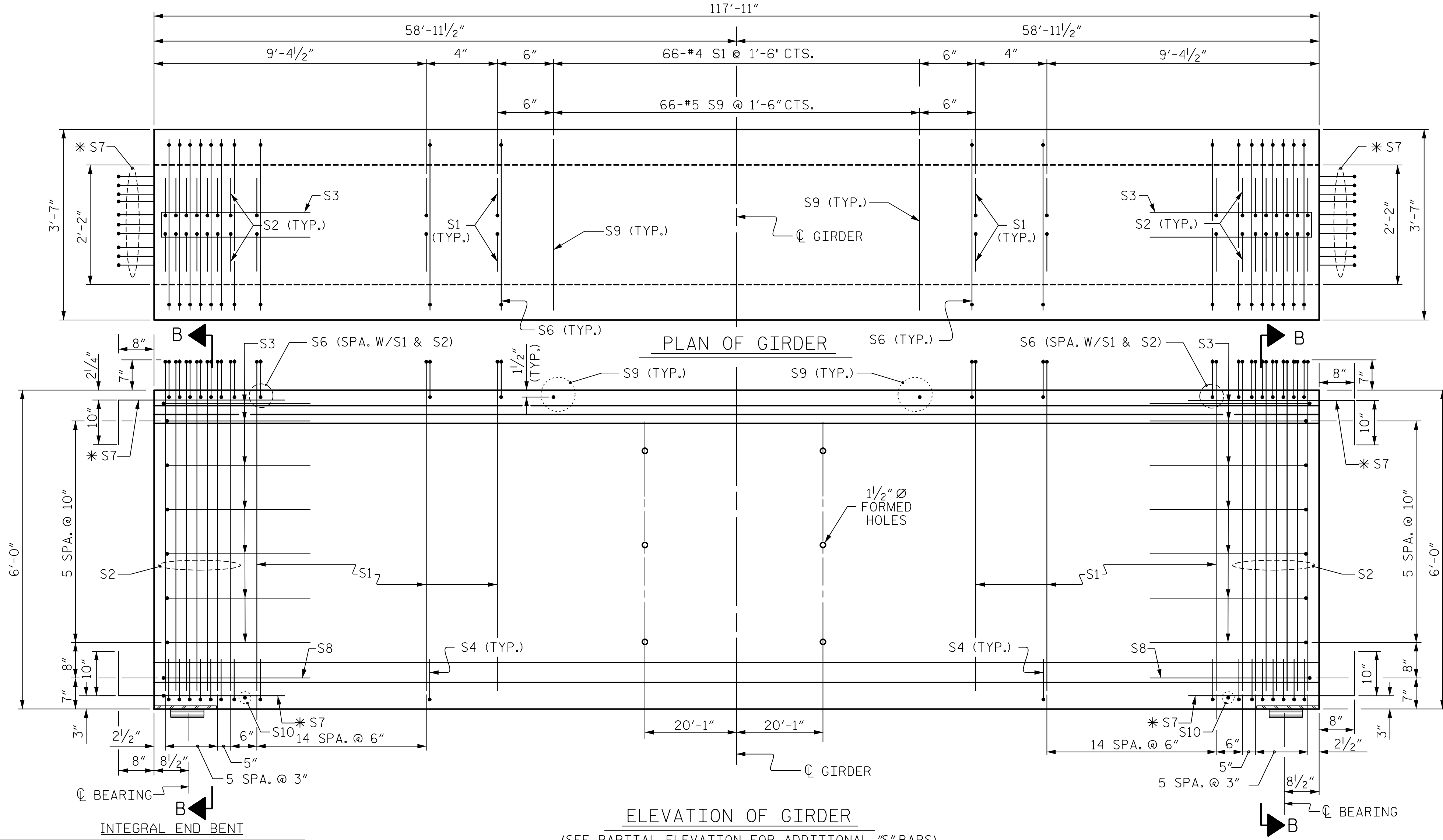
REINFORCING STEEL FOR ONE GDR					
BAR	NUMBER	SIZE	TYPE	LENGTH	WEIGHT
S1	196	#4	1	6'-11"	906
S2	28	#6	1	6'-11"	291
S3	14	#4	2	8'-5"	79
S4	84	#4	3	3'-0"	168
S6	220	#5	4	4'-5"	1013
S7	40	#5	STR	3'-8"	153
S8	2	#5	2	9'-0"	19
S9	66	#5	STR	3'-3"	224
S10	2	#3	STR	1'-10"	1
S11	8	#5	5	11'-6"	96
S12	16	#4	STR	8'-0"	86

* NOTE: S7 BARS SHALL BE BENT BEFORE SHIPMENT. HEAT BENDING SHALL NOT BE ALLOWED.



QUANTITIES FOR ONE GIRDER			
GIRDER	REINFORCING STEEL	9,500 PSI CONCRETE	0.6" Ø L.R. STRANDS
	LB.	C.Y.	No.
GIRDER	3036	25.3	42

GIRDERS REQUIRED		
NUMBER	LENGTH	TOTAL LENGTH
7	117'-11"	825'-5"



DocuSigned by:
BRUCE BOSLEY
 ENGINEER
 SEAL 046234
 12/7/2018

DocuSigned by:
PAUL J. BARBER
 PROFESSIONAL ENGINEER
 SEAL 12916
 12/7/2018

DOCUMENT NOT CONSIDERED FINAL UNLESS ALL SIGNATURES COMPLETED

HNTB HNTB NORTH CAROLINA, P.C.
 NC License No. C-1554
 343 E. Six Forks Rd., Suite 200, Raleigh, N.C. 27609

DRAWN BY: L. WATERS DATE: 7/18
 CHECKED BY: J. ELKINS DATE: 7/18
 DESIGN ENGINEER OF RECORD: B. BOSLEY DATE: 12/18

DWG. NO. 9

PROJECT NO. R-5021
 BRUNSWICK COUNTY
 STATION: 39+52.37 -Y14A-

SHEET 1 OF 3

STATE OF NORTH CAROLINA
 DEPARTMENT OF TRANSPORTATION
 RALEIGH

STANDARD
 72" PRESTRESSED CONCRETE
 MODIFIED BULB TEE

ASSEMBLED BY: LLW DATE: 3/18
 CHECKED BY: JVE DATE: 4/18

DRAWN BY: EEM 2/6/97 REV. 10/1/11 MAA/GM
 CHECKED BY: VAP 2/6/97 REV. 6/13 MAA/GM
 REV. 1/15 MAA/TMG

REVISIONS					SHEET NO. S4-9
NO.	BY	DATE	NO.	DATE	
1			3		TOTAL SHEETS 24
2			4		