

NOTES

APPROACH SLAB SHALL NOT BE CONSTRUCTED PRIOR TO COMPLETION OF THE BRIDGE DECK.

FOR REINFORCED BRIDGE APPROACH FILL FABRIC WALL INCLUDING GEOTEXTILE, IMPERMEABLE GEOMEMBRANE, 4" Ø DRAINAGE PIPE, #78M STONE, WELDED WIRE FORM, AND SELECT MATERIAL, SEE ROADWAY PLANS.

AREA BETWEEN THE WINGWALL AND APPROACH SLAB SHALL BE GRADED TO DRAIN THE WATER AWAY FROM THE FILL FACE OF THE BRIDGE AND SHALL BE PAVED. SEE ROADWAY PLANS.

THE JOINT OPENING AT THE APPROACH SLAB/DECK INTERFACE SHALL BE SAWED NO MORE THAN 12 HOURS AFTER THE APPROACH SLAB IS CAST. THE JOINT SHALL BE CLEANED OF ALL DEBRIS BEFORE THE SEALANT IS APPLIED. THE JOINT SEALER MATERIAL SHALL CONFORM TO THE REQUIREMENTS OF SECTION 1028-3 OF THE STANDARD SPECIFICATIONS.

FOR PLAN VIEW OF APPROACH SLABS AT END BENT 1 AND END BENT 2, SEE SHEET 1 OF 3.

BILL OF MATERIAL

FOR APPROACH SLAB 1

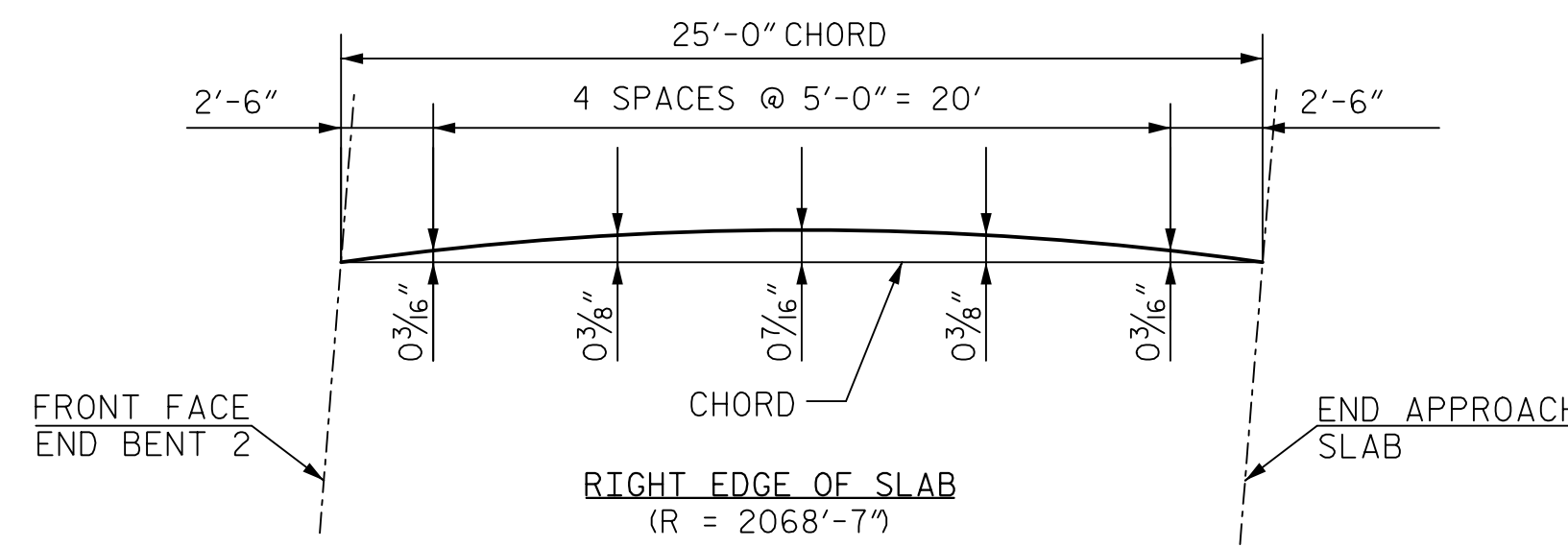
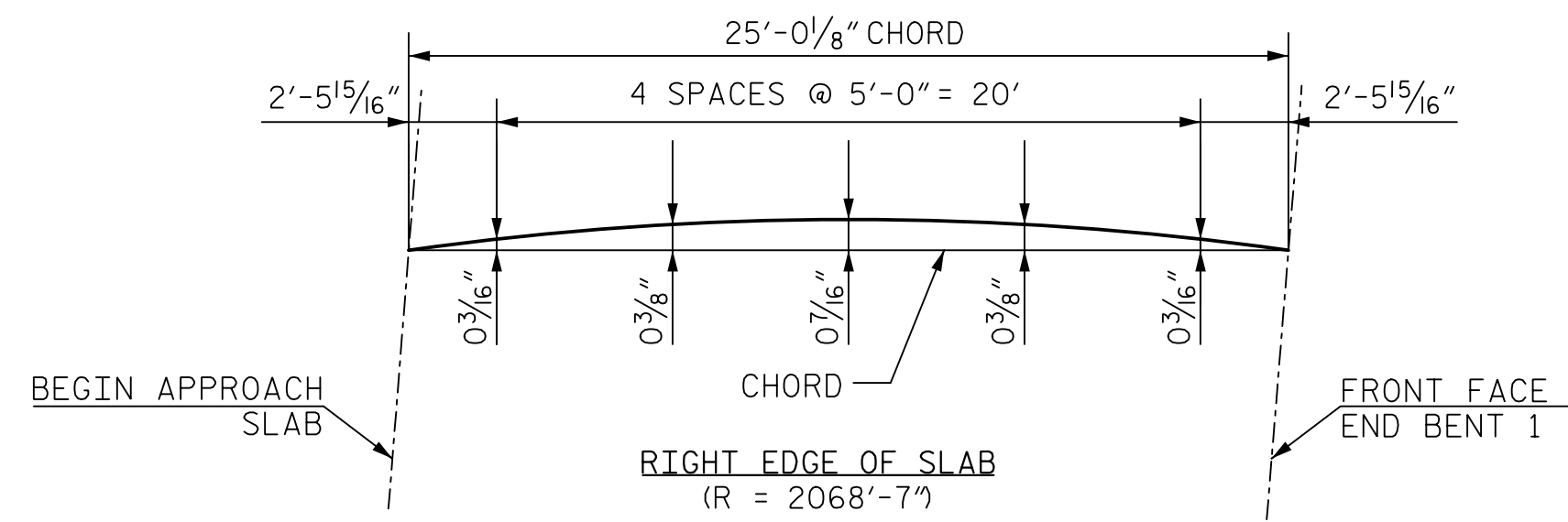
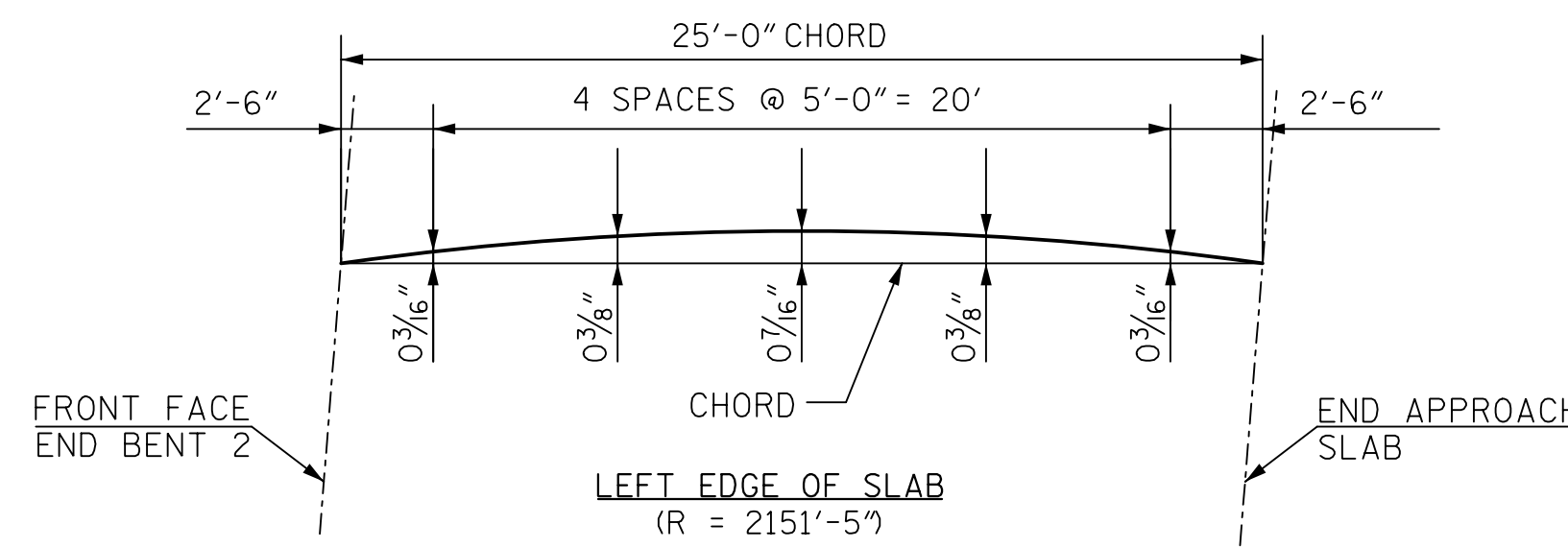
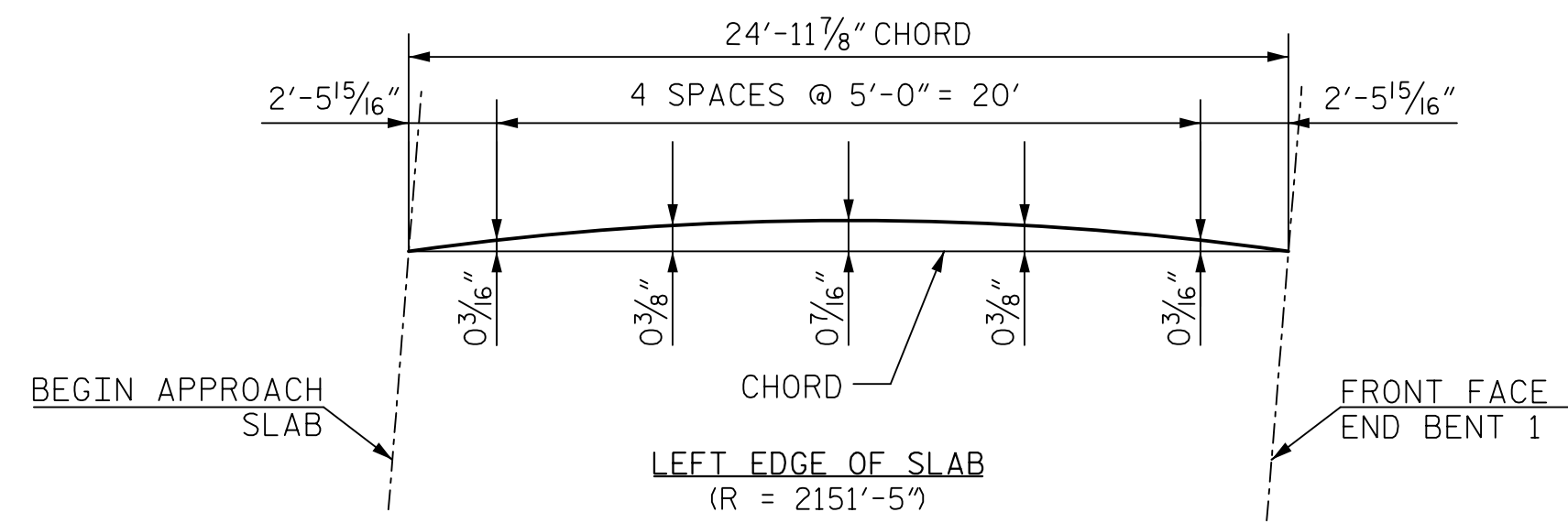
BAR	NO.	SIZE	TYPE	LENGTH	WEIGHT
* A1	78	#4	STR	29'-2"	1,520
A2	78	#4	STR	29'-0"	1,511
* A5	17	#4	STR	24'-6"	278
* B1	166	#5	STR	24'-2"	4,184
B2	166	#6	STR	24'-8"	6,150
* B3	11	#4	STR	14'-10"	109

REINFORCING STEEL	LBS.	7,661
* EPOXY COATED REINFORCING STEEL	LBS.	6,091
CLASS AA CONCRETE	C. Y.	89.8

FOR APPROACH SLAB 2

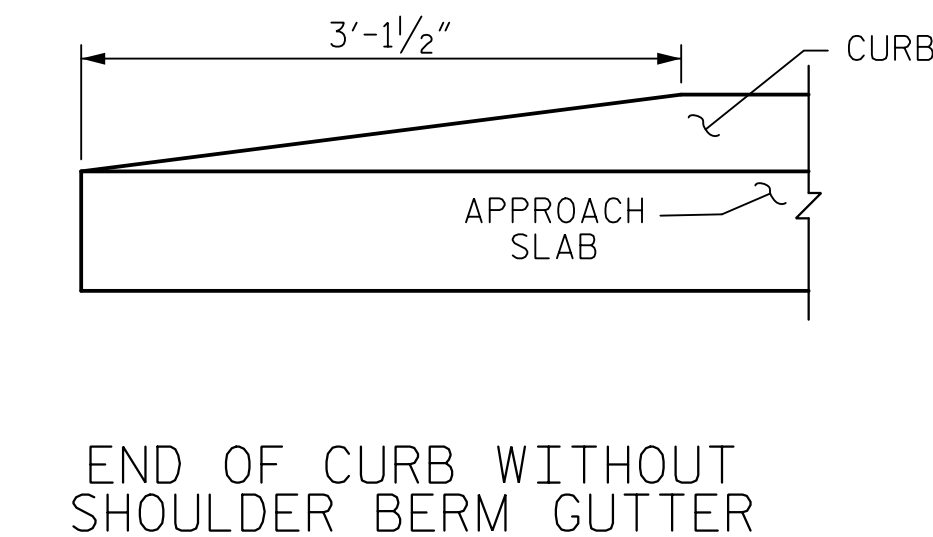
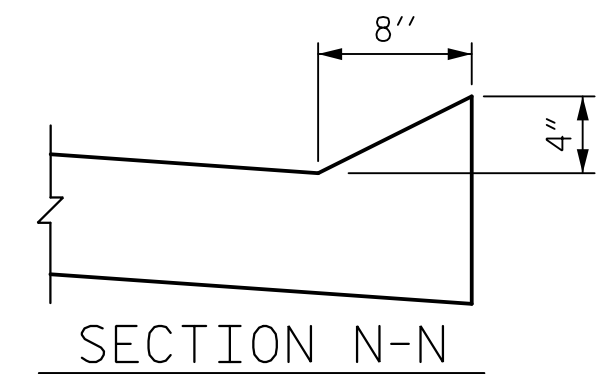
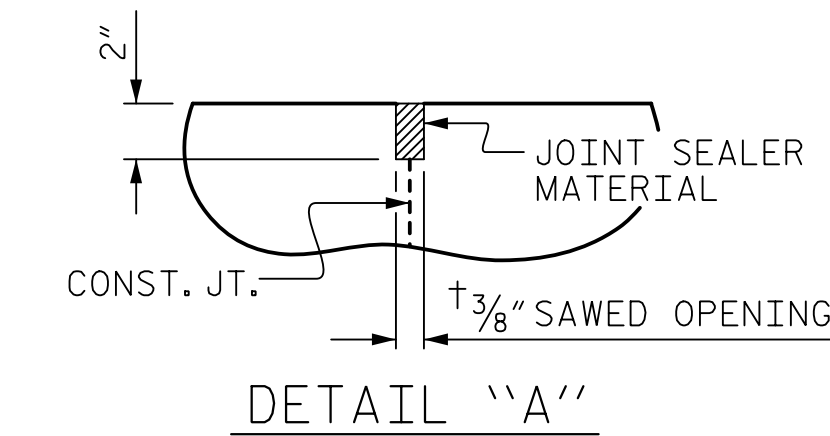
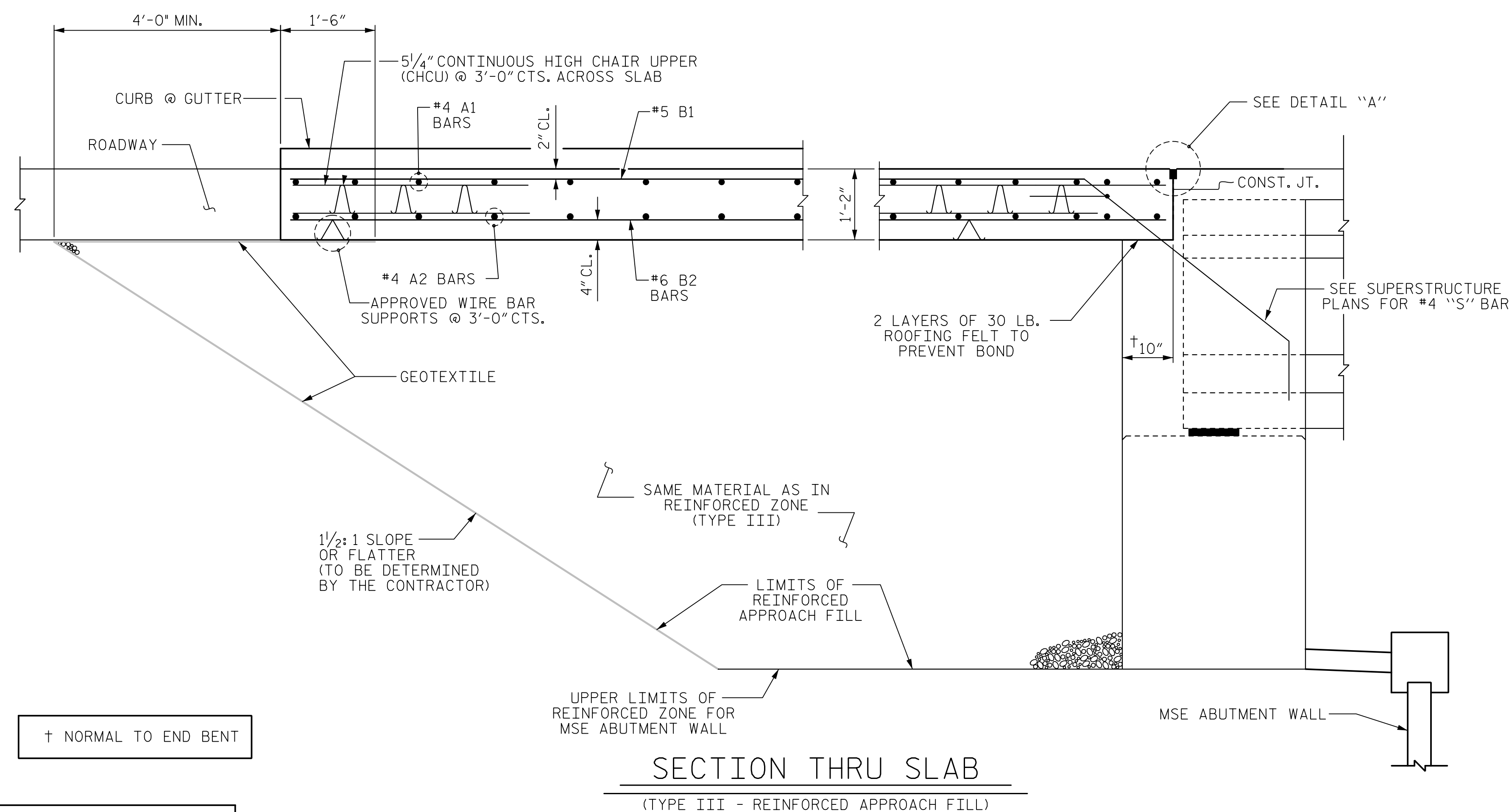
BAR	NO.	SIZE	TYPE	LENGTH	WEIGHT
* A3	78	#4	STR	28'-11"	1,507
A4	78	#4	STR	28'-9"	1,498
* A5	17	#4	STR	24'-6"	278
* B1	165	#5	STR	24'-2"	4,159
B2	165	#6	STR	24'-8"	6,113
* B3	11	#4	STR	14'-10"	109

REINFORCING STEEL	LBS.	7,611
* EPOXY COATED REINFORCING STEEL	LBS.	6,053
CLASS AA CONCRETE	C. Y.	89.0



CURVE OFFSETS - APPROACH SLAB AT END BENT 1

CURVE OFFSETS - APPROACH SLAB AT END BENT 2



PROJECT NO. R-5021
BRUNSWICK COUNTY
 STATION: POC 31+30.81 -YREV-

SHEET 2 OF 3

STATE OF NORTH CAROLINA
 DEPARTMENT OF TRANSPORTATION
 RALEIGH
 STANDARD
 BRIDGE APPROACH SLAB
 FOR INTEGRAL ABUTMENT



DOCUMENT NOT CONSIDERED
 FINAL UNLESS ALL
 SIGNATURES COMPLETED

HNTB		HNTB NORTH CAROLINA, P.C.	
NC License No. C-1554		343 E. Six Forks Rd., Suite 200, Raleigh, N.C. 27609	
DRAWN BY: L. WATERS	DATE: 6/18	DWG. NO. 24	
CHECKED BY: J. ELKINS	DATE: 6/18		
DESIGN ENGINEER OF RECORD: B. BOSLEY	DATE: 12/18		

REVISIONS						SHEET NO.
NO.	BY	DATE	NO.	BY	DATE	S3-24
1			3			TOTAL SHEETS
2			4			25

ASSEMBLED BY: LLW	DATE: 12/17
CHECKED BY: JVE	DATE: 12/17
DRAWN BY: TLA 10/05	REV. 10/1/11 MAA/GM
CHECKED BY: GM 5/06	REV. 12/21/11 MAA/GM
	REV. 6/13 MAA/GM