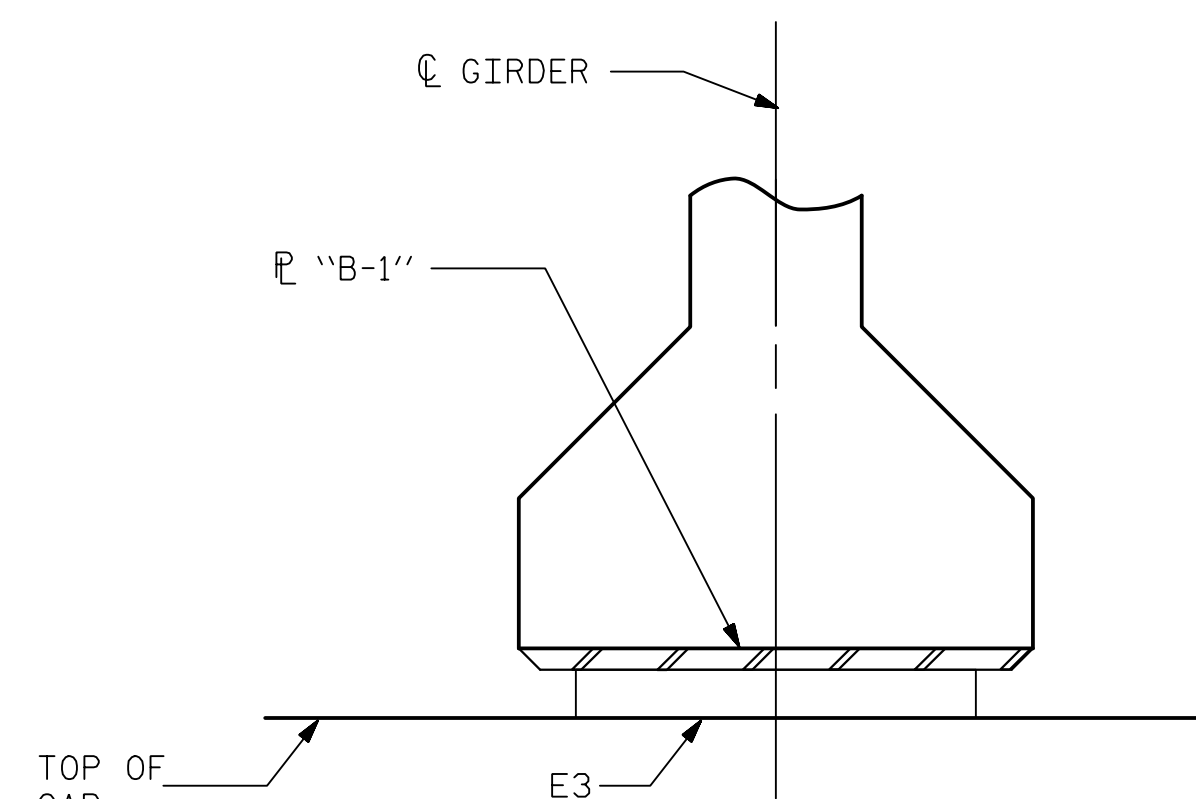


NOTES

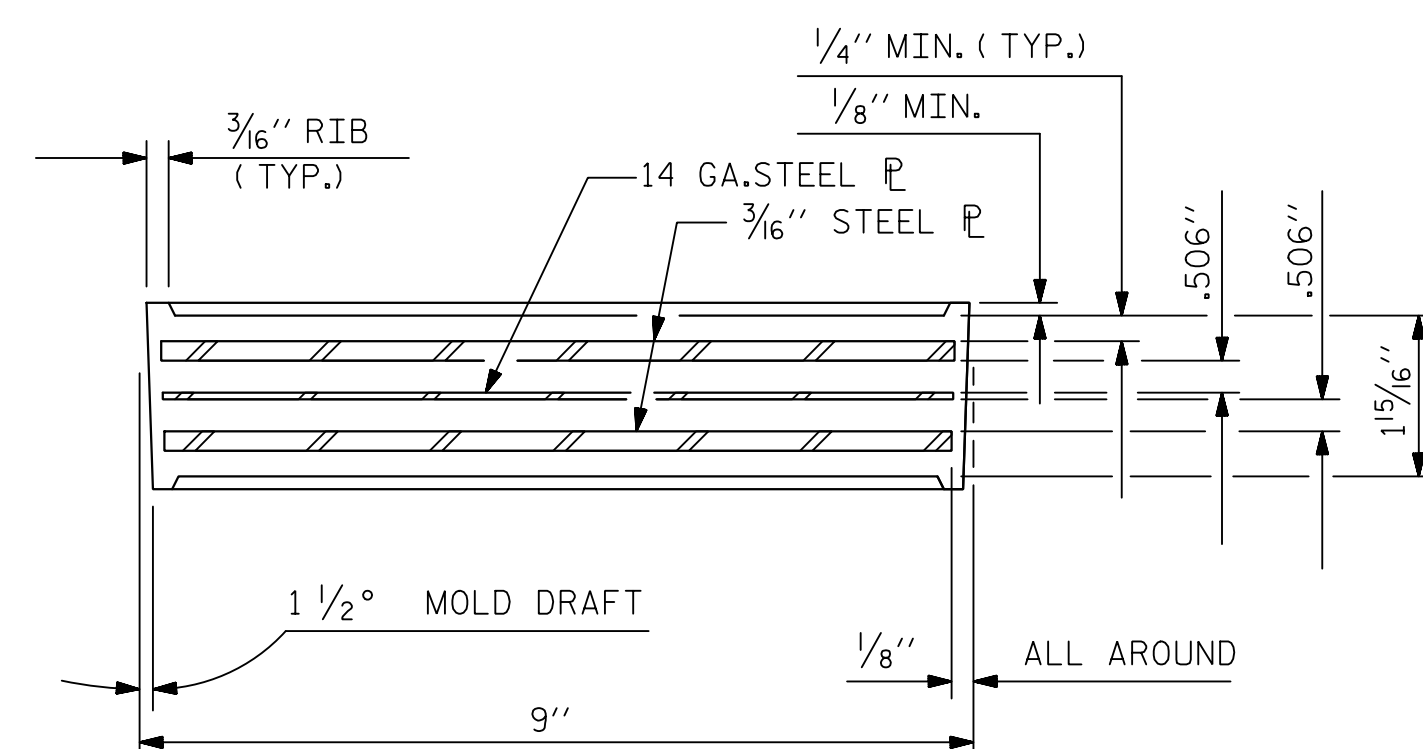
THE ELASTOMER IN THE STEEL REINFORCED BEARINGS SHALL HAVE A SHEAR MODULUS OF 0.160 KSI, IN ACCORDANCE WITH AASHTO M251.

FOR STEEL REINFORCED ELASTOMERIC BEARINGS, SEE SPECIAL PROVISIONS.

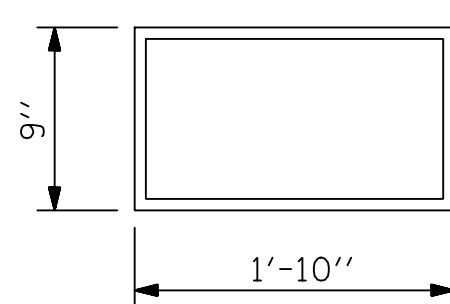
FOR BEARING LOCATIONS, SEE "FRAMING PLAN" SHEET.



FIXED SECTION D-D



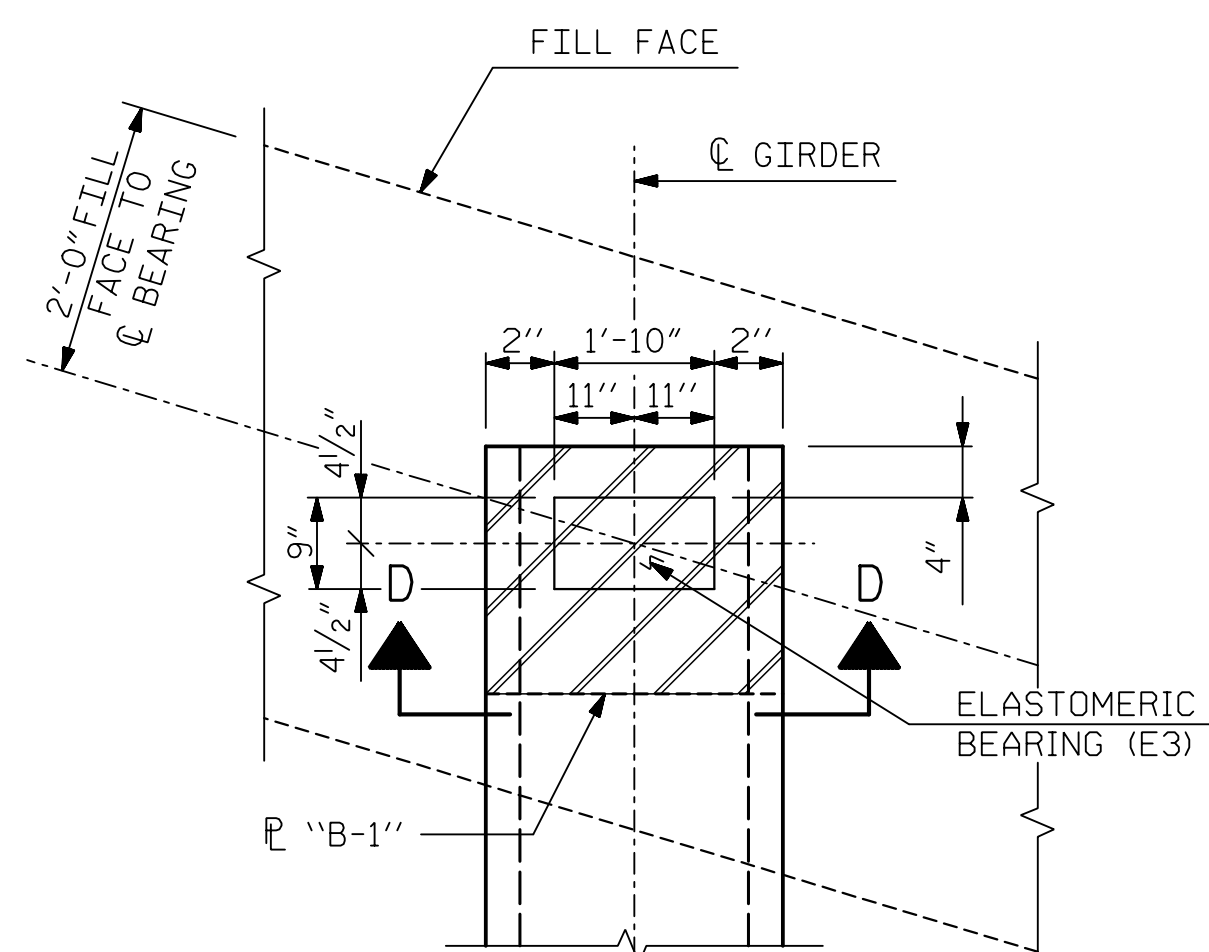
TYPICAL SECTION OF ELASTOMERIC BEARINGS



E3 (18 REQ'D)

PLAN VIEW OF ELASTOMERIC BEARING

TYPE IV

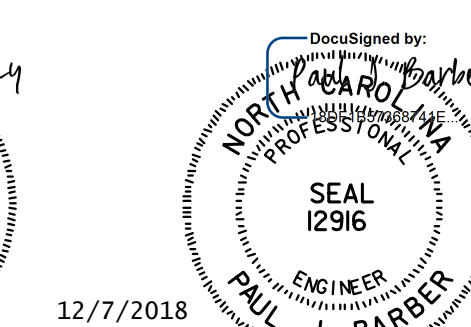
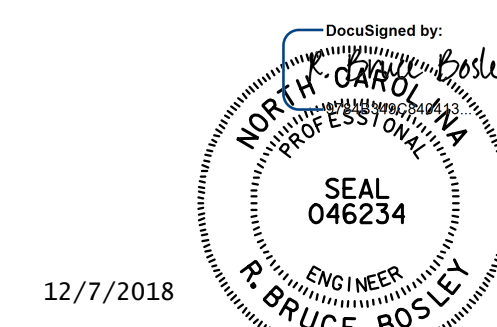


PLAN VIEW AT INTEGRAL END BENTS

(END BENT 1 SHOWN, END BENT 2 SIMILAR BY ROTATION)

|                                 |         |
|---------------------------------|---------|
| MAXIMUM ALLOWABLE SERVICE LOADS |         |
| D.L.+L.L. (NO IMPACT)           |         |
| TYPE IV                         | 225.0 k |

PROJECT NO. R-5021  
BRUNSWICK COUNTY  
 STATION: POC 31+30.81 -YREV-



DOCUMENT NOT CONSIDERED FINAL UNLESS ALL SIGNATURES COMPLETED

STATE OF NORTH CAROLINA  
 DEPARTMENT OF TRANSPORTATION  
 RALEIGH  
 STANDARD ELASTOMERIC BEARING DETAILS  
 PRESTRESSED CONCRETE GIRDER SUPERSTRUCTURE

|                       |                     |
|-----------------------|---------------------|
| ASSEMBLED BY : ADG    | DATE : 12/17        |
| CHECKED BY : RBB      | DATE : 12/17        |
| DRAWN BY : EEM 2/97   | REV. 5/1/06 TLA/GM  |
| CHECKED BY : VAP 2/97 | REV. 10/1/11 MAA/GM |
|                       | REV. 6/13 AAC/MAA   |

|                                       |              |  |  |
|---------------------------------------|--------------|--|--|
| <b>HNTB</b>                           |              | HNTB NORTH CAROLINA, P.C.<br>NC License No. C-1554<br>343 E. Six Forks Rd., Suite 200, Raleigh, N.C. 27609 |  |
| DRAWN BY : A. GOFF                    | DATE : 6/18  | DWG. NO. 13  |  |
| CHECKED BY : B. BOSLEY                | DATE : 6/18  |  |  |
| DESIGN ENGINEER OF RECORD : B. BOSLEY | DATE : 12/18 |  |  |

| REVISIONS |    |      |     |    |      | SHEET NO.    |
|-----------|----|------|-----|----|------|--------------|
| NO.       | BY | DATE | NO. | BY | DATE | S3-13        |
| 1         |    |      | 3   |    |      | TOTAL SHEETS |
| 2         |    |      | 4   |    |      | 25           |