

PLAN

**NOTES**

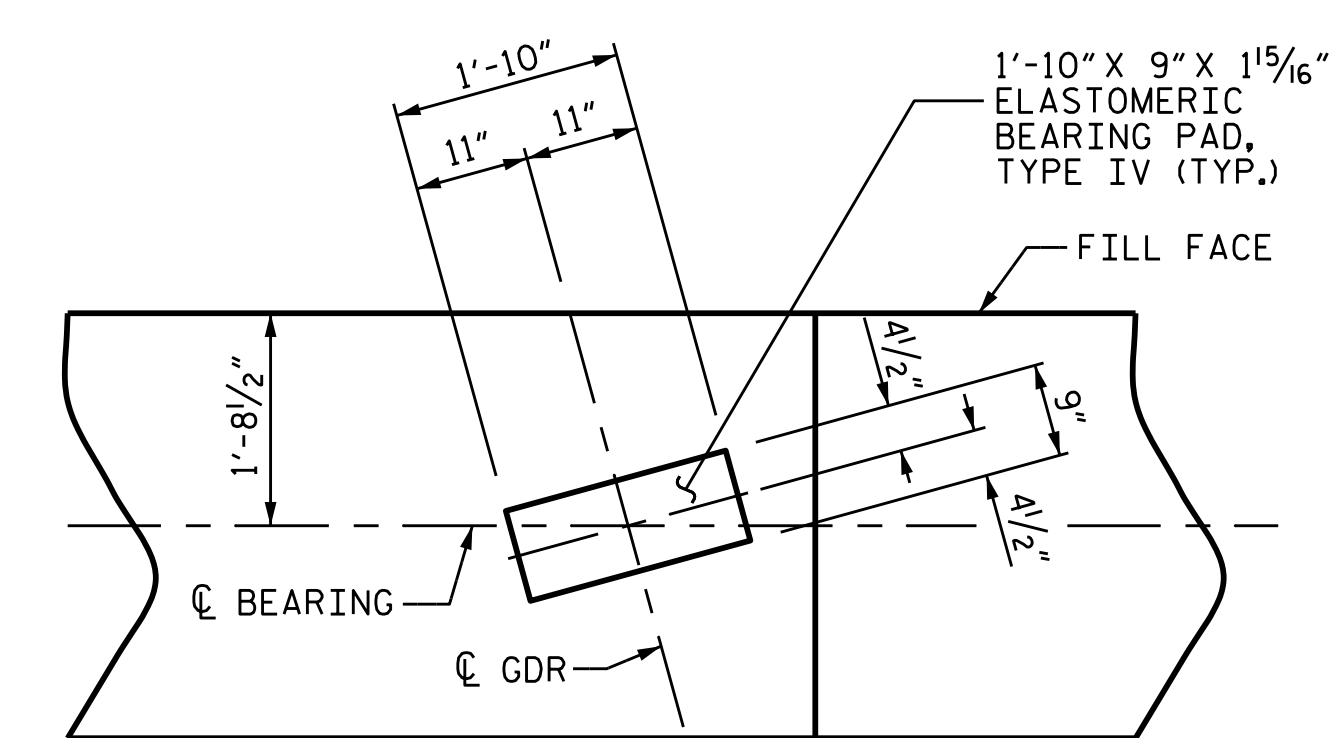
STIRRUPS IN CAP MAY BE SHIFTED AS NECESSARY TO CLEAR #4 VI BARS.

THE TOP SURFACE OF THE END BENT CAP, EXCEPT THE BEARING AREA, SHALL BE RAKED TO A DEPTH OF 1/4".

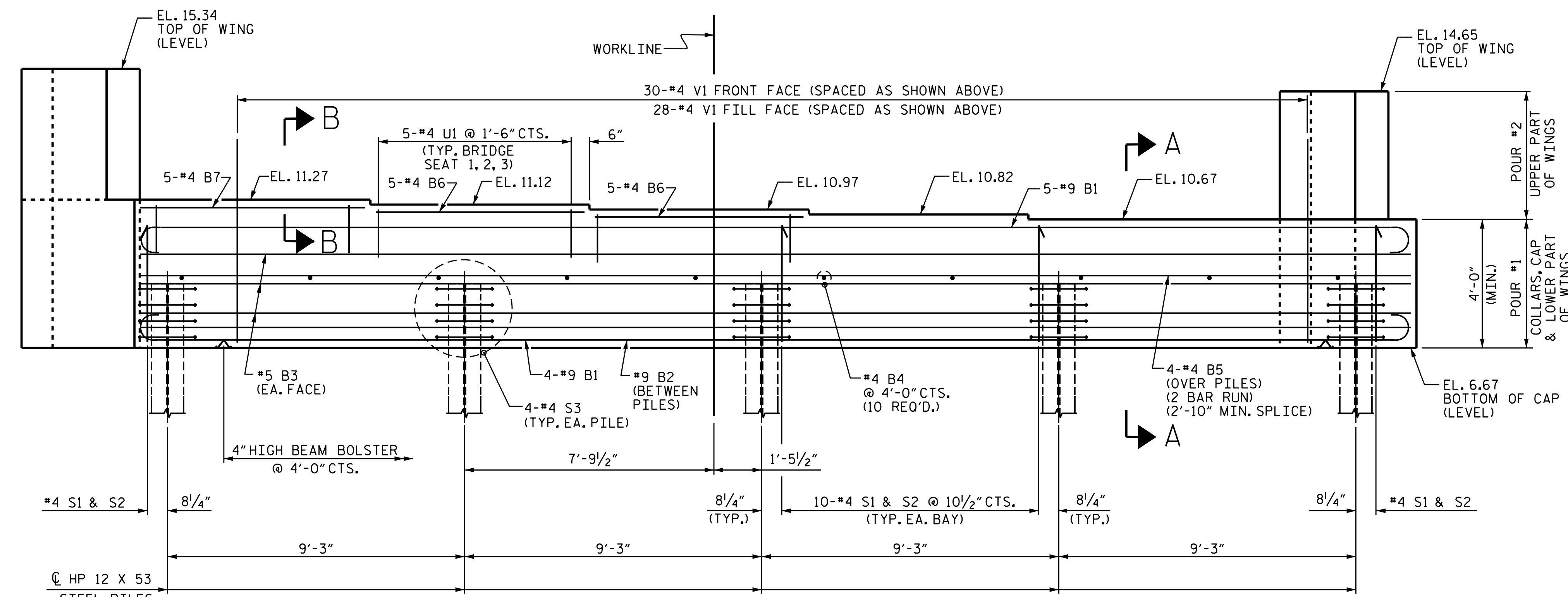
AFTER DRIVING THE PILES APPLY 1 COAT EACH OF 1080-09 BROWN AND 1080-09 GRAY PAINT TO THE EMBEDDED SECTION OF THE METALLIZED PILE PRIOR TO CONCRETE EMBEDMENT IN ACCORDANCE WITH SECTION 442 OF THE STANDARD SPECIFICATIONS.

PRIOR TO BEGINNING METALLIZATION THE CONTRACTOR WILL PROVIDE METALLIZED SAMPLES TO THE ENGINEER FOR APPROVAL.

METALLIZE PILES IN ACCORDANCE WITH TABLE 2 OF THE DEPARTMENTS THERMAL SPRAYED COATINGS (METALLIZATION) PROGRAM. FOR THERMAL SPRAYED COATINGS, SEE SPECIAL PROVISIONS.



DETAIL "A"

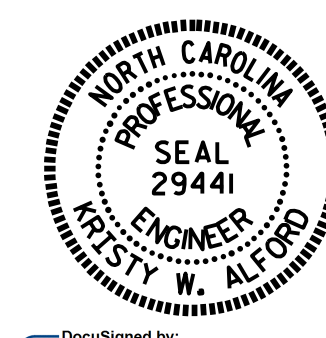


ELEVATION

CONCRETE COLLARS FOR STEEL PILES NOT SHOWN IN PLAN AND ELEVATION VIEWS FOR CLARITY. SEE "CORROSION PROTECTION FOR STEEL PILES DETAIL", SHEET 3 OF 3.

PROJECT NO. R-5021  
BRUNSWICK COUNTY  
STATION: 369+42.00 -L-

SHEET 1 OF 3



STATE OF NORTH CAROLINA  
DEPARTMENT OF TRANSPORTATION  
RALEIGH  
SUBSTRUCTURE  
INTEGRAL  
END BENT 2  
(EBL)

DRAWN BY: O. T. NGUYEN DATE: 5/17/18  
CHECKED BY: M. K. BEARD DATE: 8/18  
DESIGN ENGINEER OF RECORD: A. K. PATEL DATE: 1/10/19

DOCUMENT NOT CONSIDERED FINAL UNLESS ALL SIGNATURES COMPLETED

REVISIONS						SHEET NO.	
NO.	BY:	DATE:	NO.	BY:	DATE:	S2-33	
1			3			TOTAL SHEETS	
2			4			38	